

SAN DIEGO ASSOCIATION OF GEOLOGISTS

SDAG MEETING ANNOUNCEMENT

March 19, 2025

6:00 pm - Social Hour | 6:30 pm - Dinner | 7:45 pm – Program

LOCATION:

Casa Guadalajara - The Garden Room

4105 Taylor Street

San Diego, CA 92110

Additional public parking available after 5pm across the street in the Caltrans parking lot.

SPEAKER: Don Barrie

San Diego Mesa College

Anza-Borrego Desert Natural History Association

TITLE: There & Back Again: A Geologic Excursion to New Zealand

DINNER: Mexican Combo Buffet

COST: Member \$55.00 - Non-Member \$65.00 - Student \$25.00

RESERVATIONS:

Make & Pay your reservation online through the SDAG website, before **6PM SUNDAY, MARCH 16th**

Please note, all meeting reservations require online pre-payment due to venue costs, venue contracts, and loss of money due to no shows



**Click Here!
For Reservations**



[Click here to join our Facebook!](#)

[Visit our Website!](#)



2025 OFFICERS

President

[Heather Reynolds](#)

(540) 525-6475

Vice President

VACANT

Secretary

[Jasmine Peach](#)

Treasurer

[Xiomara Rosenblatt](#)

Web Master

[Carolyn Glockoff](#)

[CARO-LION](#)

[ENTERPRISE](#)



**SDAG
Announcements**

DIRECTIONS:

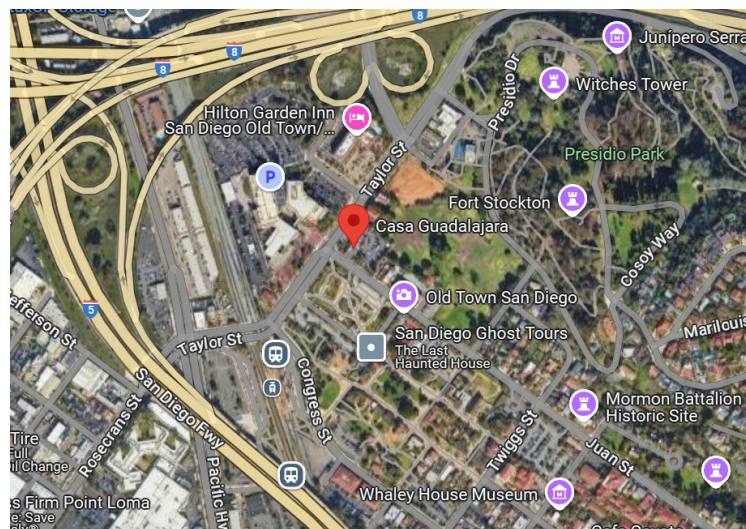
For directions to the meeting venue click on the map icons.



[Google Maps](#)



[Apple Maps](#)





Meet Our | Speaker & Topic

ABOUT: DON BARRIE

Don Barrie is a partially retired geology professor at San Diego Mesa College. He currently serves on the board of the Anza-Borrego Desert Natural History Association and regularly leads geology-themed trips to Iceland and New Zealand with this organization. Prior to joining Mesa College full time in 2004, he taught geology, physical geography, oceanography, and natural disasters at Mesa, Cuyamaca, Grossmont, and MiraCosta colleges and at San Diego State University. As a professional geologist (PG) and a certified engineering geologist (CEG), he has over 14 years of experience managing geotechnical and environmental investigations in the U.S. and abroad. Before becoming an educator, he worked as a geologist with Leighton & Associates and AMEC Earth & Environmental, where he managed field projects in southern California, Arizona, Hawaii, and Guam. He holds a B.S. in geology from Cal Poly Humboldt and an M.S. in geology from the New Mexico Institute of Mining and Technology.



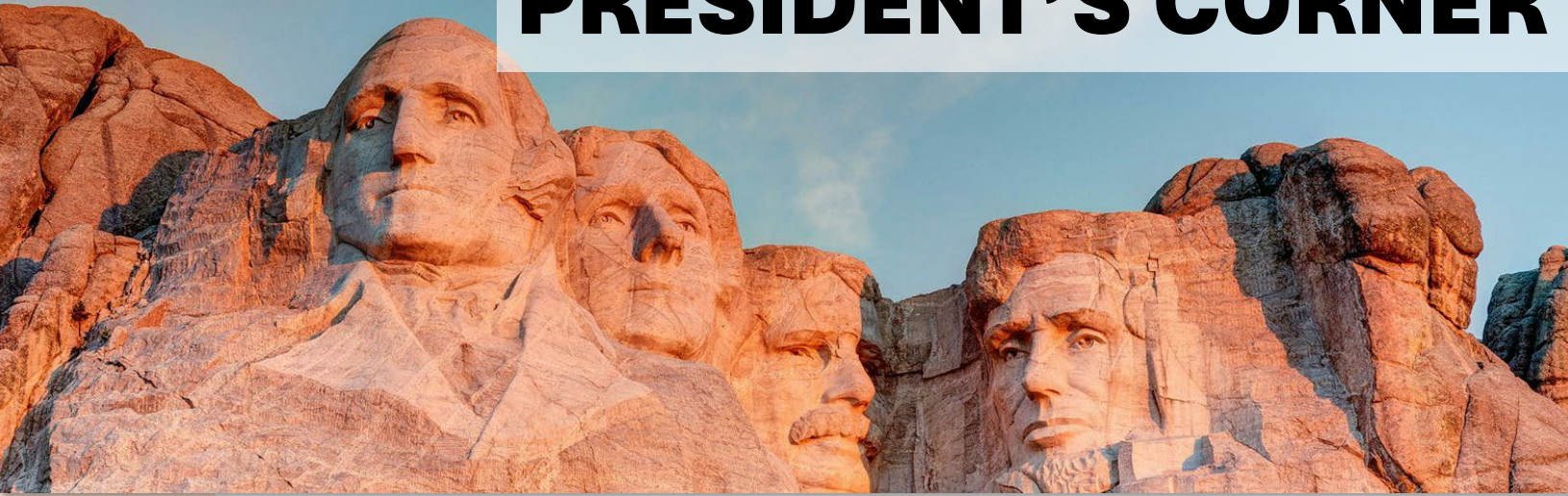
ABSTRACT:

There & Back Again: A Geologic Excursion to New Zealand

New Zealand (Aotearoa) is part of a larger, mostly submarine continent called Zealandia. New Zealand's North & South Islands lie astride the active Pacific-Australian Plate boundary and represent Zealandia's largest landmasses above sea level. Oppositely verging subduction zones occur offshore of the North and South Islands; in between, the Alpine Fault represents a transpressive, continental transform. For more than 80% of its geologic history, New Zealand was attached to the margin of the former Gondwana supercontinent and its break-up fragments. New Zealand's basement rock includes various tectonostratigraphic terranes, which have been transported westward via plate motion and accreted onto the southeastern Gondwana margin.

Following a 4-phase model, New Zealand's tectonic evolution can be characterized in terms of terrane accretion (Phase 1); rifting and seafloor spreading (Phase 2); regional subsidence and marine incursion (Phase 3); and renewed subduction/arc volcanism, activation of the Alpine Fault, and rise of the Southern Alps (Phase 4). Interesting geologic curiosities in New Zealand include the Wai-O-Tapu geothermal area (hot springs, mud pots, sinter terraces, and a geyser), the Moeraki Boulders (giant concretions), the Te Anau glowworm caves (limestone caverns), and the Pancake Rocks (limestone/mudstone pseudo-bedding). Key geologic hazards affecting modern-day New Zealand are associated with arc volcanism, plate-boundary and intraplate seismicity, and slope failures.

PRESIDENT'S CORNER



Hello SDAG Members,

I have one word to describe February's meeting, WOW! What a thought-provoking talk on active faulting in San Diego by Dr. Karl Mueller!! Thank you, Karl, for sparking curiosity and excitement within the geology community. You gave us a lot to consider with this newly proposed seismotectonic framework. Time will tell, but maybe a decade or two from now, we will look back at this moment and realize that we witnessed a pivotal point in further understanding active faulting in San Diego.

Thank you to all who were able to join us at Tom Ham's Lighthouse in the California Room. We had a tremendous turnout, a spectacular talk, great weather, and beautiful views of the San Diego Bay and downtown San Diego skyline! What more could you ask for?

I'd like to thank John Teasley for recording Karl's talk. We'll make it available on our website in the coming weeks, so stay tuned. Also, another shout-out goes to Wes Danskin and Geoff Cromwell with the USGS for displaying their 3D relief map for folks to discuss during our social hour.

Up next is our March 19th meeting at Casa Guadalajara in Old Town, where Don Barrie will give a presentation exploring New Zealand geology! Please join us for another excellent presentation by Don. Just a friendly reminder: Sunday, March 16th, is the last day to sign up!

Good luck to those who will be taking the ASBOG Geology Exams for the Fundamentals or Practice of Geology and the California-Specific Exam in March! You got this! 😊

Thanks, and see you all at the March 19th meeting!!

-Heather Reynolds
2025 SDAG President



2025 Upcoming Meetings

DATE	SPEAKER & TOPICS
March 19	Don Barrie on “There & Back Again: A <i>Geologic Excursion to New Zealand</i> ”
April 16	Student research presentations by student scholarship recipients
May 14	SDAG / Geo-Institute Joint Meeting (Tentative)
June 18	SDAG / SCGS Joint Meeting
July 16	Rachel Maxwell on a survey of the Mojave-Sonoran Desert Springs and their sources. “ <i>Is this spring connected to that Aquifer?</i> ”
August 20	Dr. Mario Caputo on Sedimentary Rocks in the Grand Canyon
September 26-28	SDAG Annual Field Trip, San Andreas Fault in the Wrightwood area, Transverse Ranges (no meeting this month)
October 15	Todd Wirth on “First report of marine invertebrate megafossils from the Eocene Mount Soledad Fm at Tourmaline Surfing Park”
November 19	Joint Meeting with AEG Inland Empire Section
December 17	Traditional Holiday Celebration at the San Diego Natural History Museum with Tom Deméré



KYOTO PRIZE SYMPOSIUM



Basic Sciences

Paul F. Hoffman

24TH ANNUAL KYOTO PRIZE SYMPOSIUM

March 12 - 13, 2025

Basic Sciences Presentation - Paul F. Hoffman

MARCH 12, 2025 at 1:00 PM - 2:30 PM

UC San Diego

Price Center, Ballroom East

[\[Directions Here\]](#)

Topic:

Dancing continents and frozen oceans:
reading Earth's diary in natural stone tablets

[\[REGISTER HERE\]](#)



ONE STOP WONDER

TORREY PINES STATE BEACH



With clear skies and warm temperatures, our first OSW of 2025, led by Dr. Patt Abbott and Ron Kies, was a blast! Dr. Abbott and Mr. Kies ignited our curiosity by explaining the existence of the Paleocene-Eocene Thermal Maximum event seen in the outcrops at Torrey Pines State Beach. Nothing beats world-class outcrops along the San Diego coast! Thank you to everyone who attended and contributed to the discussions with their personal expertise.





ONE STOP WONDER

LAKE CAHUILLA AND THE SALTON SEA



JOIN US FOR OUR NEXT OSW

March 9 at 10:00 AM

Link to Meeting Location:

[Christmas Circle, Borrego Springs](#)

Led by John Peterson

Explore key sites related to the geologic and archaeological history of Lake Cahuilla and the Salton Sea

Details & Figures:

See the OSW March attachment for more information.

MORE INFO TO COME

SAVE THE DATE

SDAG Annual Field Trip

San Andreas Fault in the Wrightwood area,
Transverse Ranges

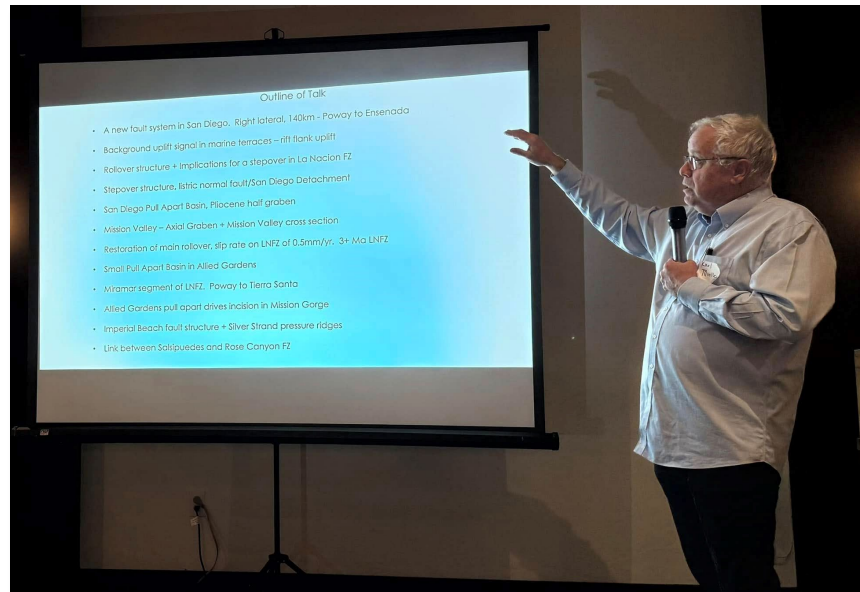
September 26-28, 2025

Link to list of [Previous Field Trips](#)

SDAG | February Meeting Recap

THANK YOU!

Thank you to our speaker, Dr. Karl Mueller, for his insightful talk on *A New Seismotectonic Framework for Metropolitan San Diego*. He gave us much to consider and explore! We also appreciate everyone who attended our February 2025 meeting. We had a fantastic turnout at Tom Ham's Lighthouse, with engaging discussions and a total of 77 attendees, both members and non-members. We look forward to seeing you at our March meeting.

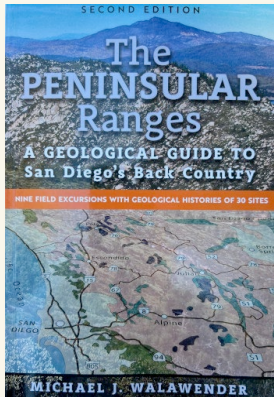




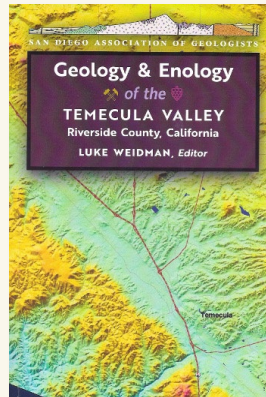
SDAG | Publications

The [SDAG publication page](#) includes links to in stock books we sell thru Sunbelt Publications, out of stock books we sell thru Google Play Books, and out of stock books that we provide free as scanned copies to download.

FIELD TRIP GUIDES & RESEARCH REPORTS



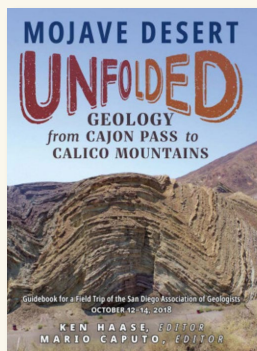
**The Peninsular Ranges:
A Geological Guide to San
Diego's Back Country 2nd
Edition**



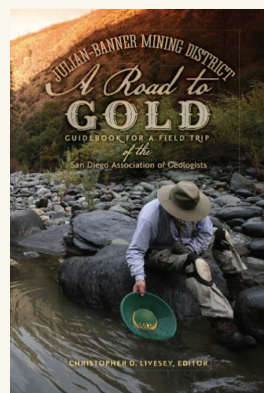
**Geology & Enology of the
Temecula Valley Riverside
County, California
2nd Edition**



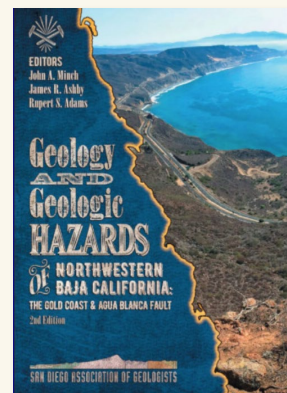
**On the Manner of Deposition
of the Eocene Strata in
Northern San Diego**



**Mojave Desert Unfolded
Geology From Cajon
Pass to Calico Mountains**



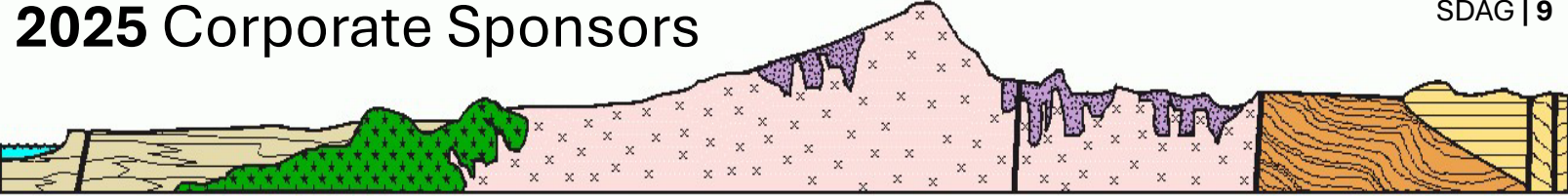
**Julian-Banner Mining
District: A Road to Gold**



**Geology and Geologic Hazards
of Northwestern Baja California
Gold Coast & the Agua Blanca
Fault, 2ed**

FREE GUIDES AVAILABLE FOR DOWNLOAD

- [1972 Otay Mesa](#)
- [1977 SW San Diego](#)
- [1978 Coronado Islands, BC](#)
- [1979 San Diego Region](#)
- [1987 Julian Gold](#)
- [1981 Geologic Investigations of the San Diego Coastal Plain](#)
- [1982 Geologic Studies in San Diego](#)
- [1985 Eocene in San Diego](#)
- [1989 Fault Features: La Jolla - Ensenada](#)



SAN DIEGO ASSOCIATION OF GEOLOGISTS

DIAMOND SPONSORS \$1000+

Link to our [Sponsors Page](#)

Renew or become a new 2025 SDAG Sponsor

Minimum \$100 includes annual Membership: [SPONSOR FORM](#)



Kuper Consulting LLC
tom@kupercon.com
dorian@kupercon.com



**Mobile
Geochemistry Inc.**



GEOTOURS
EXPLORE THE WORLD



GEOCON

Dr. Pat Abbott

To Promote
Geologic Knowledge

ANONYMOUS SPONSORS

RUBY SPONSORS \$500



CIVIL & ENVIRONMENTAL CONSULTANTS



— *Expect Excellence* —





SAN DIEGO ASSOCIATION OF GEOLOGISTS



EMERALD SPONSORS \$100

Dave Bloom
Gerald Schiller
Todd Wirths

Dr. Monte Marshall

SDSU Geology Professor Emeritus

Larry Cann

Joan & Dave Kimbrough

Joe Corones

Greg Cranham

Consulting Geologist

Dr. Vic Camp

John Hoobs

Randy Wagner

Anonymous Sponsor

Tom Lamb

Kip Hering

Lowell E. & Diana Lindsay

David & Jan Steller

Dr. Anne Sturz

Carole L. Ziegler

Sue Tanges

Scott Snyder

Rob Hawk

Mary Walke

John Teasley

Chris Livesey- Geotek

Stan Helenschmidt

Helenschmidt Geotechnical, Inc.

San Diego Car Accident Attorneys

Carolyn Glockhoff

Caro-Lion Enterprise

Tod Clark - Pacific Drilling Co.

Monte & Diane Murbach

Murbach Geotech

Eldon Gath - Earth Consultants

George H. Ramos Jr. & Associates

GEI - Geotechnical Exploration Inc.

Cari Gomes- Pinao Consulting

Dr. Margaret R. Eggers

Eggers Environmental, Inc.

Phil Farquharson- Geology Guy

Christian Wheeler

Christian Wheeler Engineering

Patrick Lehrmann

Advantage Geophysics, Inc.

Starbucks Coffee Company

Cardiff, CA

Vanessa Nicole Jewels

Mark Holt - Discovering Lost America

Jeff Hull - Verdantas