

SAN DIEGO ASSOCIATION OF GEOLOGISTS

<http://www.sandiegoeologists.org/>

PRESIDENT

John Teasley
(760) 908-7740
jtea@cox.net

VICE PRESIDENT

Heather Reynolds
(540) 525-6475
heath88@vt.edu

SECRETARY

Neil Seitz
(419) 330-9511
neilseitz@hotmail.com

TREASURER

Tina Zeidan
(661) 733-9548
zeidan.tina@gmail.com

WEBMASTER: Carolyn Glockhoff carolyn@caro-lion.com

SDAG MEETING ANNOUNCEMENT

Wednesday, August 21, 2024

Where: Bali Hai Restaurant
2230 Shelter Island Drive
San Diego, CA 92106

When: 6:00 pm - Social Hour
7:00 pm - Dinner
8:00 pm - Program

Dinner: Luau Buffet / Vegan Options

Cost: \$65.00 Member; Non-Member \$75.00; Student \$30.00

Reservations: Make/Pay your reservation [online](#) through the SDAG website, by **10:00pm Tuesday, August 13**. (*Please note beginning January 2024 all meeting reservations will require on-line pre-payment due to venue costs, venue contracts, and loss of money due to no shows.*)

Speaker: Dr. Pat Abbott

Title: Upper Cretaceous through lower Eocene strata in San Diego: Messages for the end-Cretaceous impact, extinctions, and paleoclimates

Abstract: Upper Cretaceous and Eocene strata form an important part of San Diego. How well do their stories fit into the global record of events? Our Upper Cretaceous sedimentary rocks tell of sedimentation at the edge of the North American continent. Missing are the strata from the last several million years of the Cretaceous and the early millions of years of the Paleocene. This deprives us of the sedimentary rocks and fossils needed to interpret end-Cretaceous events.

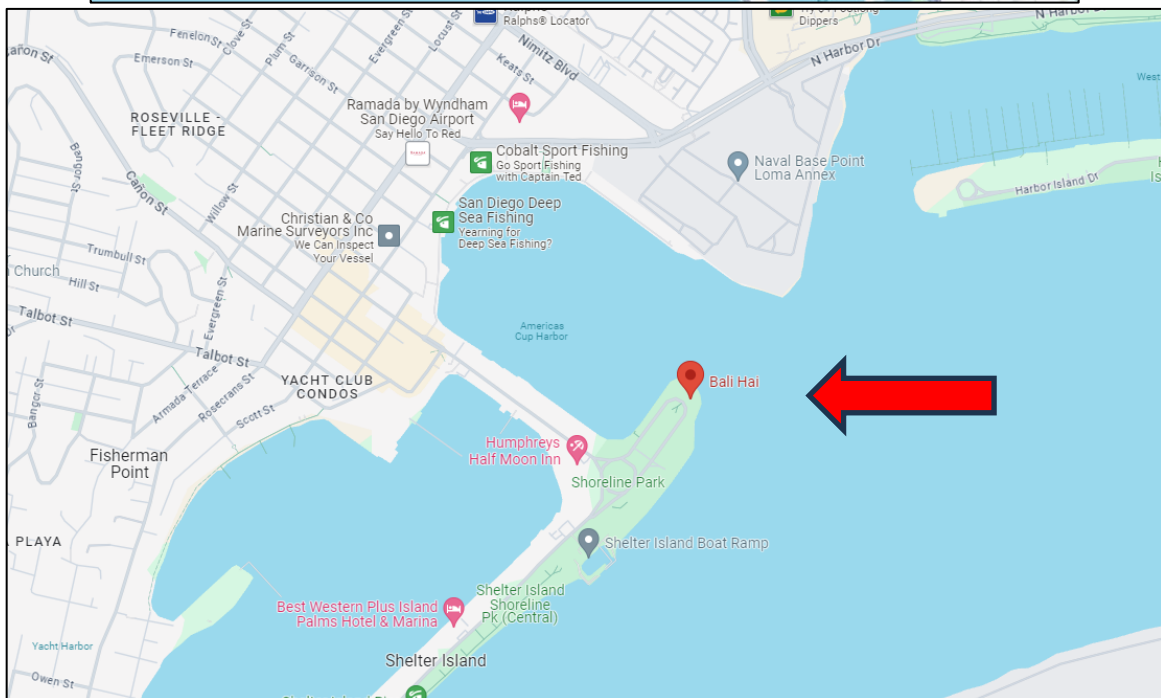
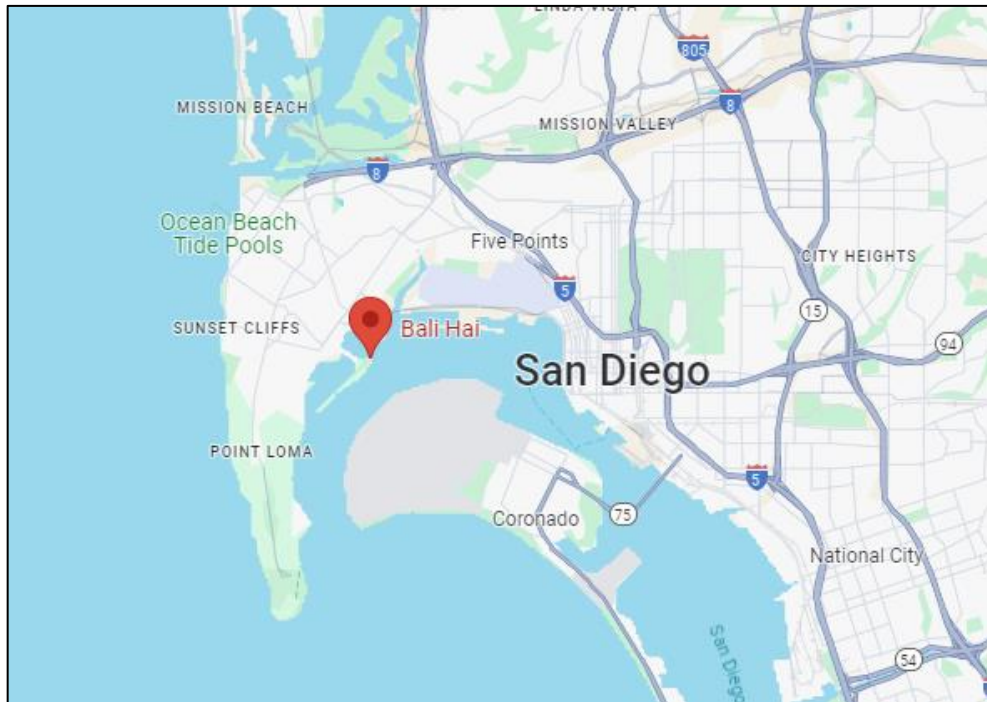
Most of the Paleocene Epoch is unrepresented by sedimentary rocks thus limiting what we know of that time. However, we do have a superb exposure of the latest Paleocene – earliest Eocene strata at Black's Beach. This outcrop helps document the Paleocene-Eocene Thermal Maximum (PETM).

Our Eocene sedimentary rock and fossil record is world class. From its PETM beginning,

our strata record the Early Eocene Climatic Optimum (EECO) and almost reach the Eocene-Oligocene boundary. The San Diego Eocene not only fits the global picture but provides significant data supporting it. These topics will be discussed in considerable detail with geologic and philosophic ramifications

The venue location is open-ended to the outside, with a beautiful view of the bay and city skyline. Plan to bring a jacket or sweater in case it gets a little cool after the sun goes down.

Meeting Location Map:



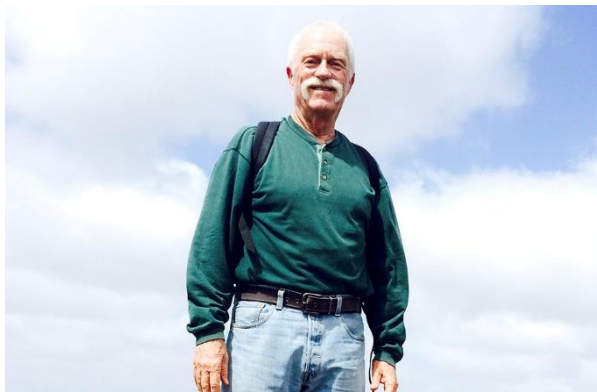
Directions:

From I-8:

1. Take I-8 W to Sunset Cliffs Blvd
2. Use any lane to turn left onto Sunset Cliffs Blvd
3. Keep left to continue on Nimitz Blvd
4. Turn right onto Rosecrans St
5. Turn left onto Shelter Island Dr
6. At the traffic circle, take the 2nd exit and stay on Shelter Island Dr

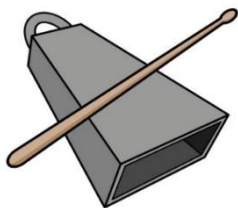
From I-8:

1. Take exit 17A to merge onto W Hawthorn St toward San Diego Arpt.
2. Use the right 2 lanes to turn right onto N Harbor Dr
3. Turn left onto Scott St.
4. Turn left onto Shelter Island Dr
5. At the traffic circle, take the 2nd exit and stay on Shelter Island Dr



Speaker: Dr. Pat Abbot

Pat is a native San Diegan, a graduate of Hoover High School and San Diego State College. His Master's and Ph.D. degrees in geology are from The University of Texas at Austin. He was hired by San Diego State College as a Carbonate Petrologist and spent most of his career there. His books include 12 editions of college textbook Natural Disasters published by McGraw-Hill; The Rise and Fall of San Diego published by Sunbelt; Geology of Mission Trails Park published by the MTRP Foundation; editor of five SDAG guidebooks (1979, 1981, 1982, 1985, 1991) and 15 other guidebooks. He has co-led Smithsonian Journeys to all continents and across all oceans. Occasionally, he speaks on TV news.



President's Cowbell Corner

Greetings SDAG Members

At July's meeting, Chuck Houser gave a riveting technical and artistic presentation of auroral displays that he captured with his cameras on Mt Laguna last April. That's right, we said Auroral Displays, as in Aurora Borealis. Chuck presented the group with dazzling views that only the camera could resolve, as well as remarkable naked-eye shots with both a fancy digital SLR camera, and an old iPhone. The

results included meteors and (of course) aircraft, and were presented and narrated upon as only Chuck can!

The staff at Sunbelt Publications provided the venue and set-up, and helped us with the show. They even graciously sold some books to our always eager members. The pizza faire was provided by San Diego Mobile Pizza and was a huge hit, arriving in a big yellow (s)C(h)ool Bus with a loud novelty horn. The wood-fired bus oven provided most excellent pizzas from Chef Marco, with plenty of left-overs to take home. The Walawender Bar would like to thank you all for your donations to the SDAG Student Scholarship Fund.

Our August meeting features Dr. Pat Abbott at the delightful Bali Hai Restaurant on Shelter Island. Pat calls this his "Kick-Ass" talk, and we'll just have to be there to find out why! Wear your favorite Hawaiian shirt and join us for what should be an unforgettable evening on San Diego Bay with the incomparable Dr. Abbott.

With the upcoming 2024 SDAG Field Trip to Wrightwood in September, there will be no newsletter or dinner meeting in September. So please get your registration forms in to SDAG VP & Field Trip Organizer Heather Reynolds as soon as possible, and we'll see you out in the field, where geologists belong! - **John**

Charles Franklin Lough **(1930 - 2024)**

Charles Franklin Lough, 94, passed away peacefully July 21, 2024, at home in San Diego after having declining health with heart failure. He was born in 1930 at the old Mercy Hospital in San Diego making him a true native of the area. He attended Herbert Hoover High, finishing high school at Grossmont Union High; went onto San Diego State College (not a university then), finishing his Geology BS degree at University of Arizona in 1952. His employment history included working for U.S. Geological Survey 1952 to 1953; he was in the Army in 1953, and using veterans benefits he earned an MA in Geography, training to become a teacher. Instead of entering the field of education, the state of California Department of Water Resources had him from 1956 to 1961. He and his family moved to Saudi Arabia where he worked for the Ministry of Agriculture 1961 to 1962. On returning home the family spent time exploring and living in Greece, then bought a bus and explored some of Europe. When he returned, the County of San Diego Department of Public Works took him on 1973 to 1974. From there he transferred to the San Diego Department of Planning and Land Use, his employment lasting until retirement May 1, 1992. Throughout these years he collected books on many subjects, geology maps, and, of course, rocks. He considered himself a great resource of information for many in this group. He had told me that he was one of the early members of SDAG when it first formed in San Diego.

There will be a Celebration of Charlie's Life **September 7th, 2024**
11AM to Early Evening
6561 Bantam Lake Ave
San Diego, CA 92119

We would love for you to attend. Please let me know if and with how many are coming.
Text or Call Lore **(619) 607-7879** or email loreparker@hotmail.com

- **L. Lore Parker**, Charlie's Domestic Partner and Spouse

2024 Annual Field Trip is Almost HERE!

Things are movin' and shakin' for the upcoming SDAG Field Trip 2024! You won't want to miss out on this opportunity to explore and learn about the San Andreas Fault tectonic history within the Transverse Ranges in the San Gabriel Mountains!! Field trip stops are planned along the San Andreas Fault from northwest of Wrightwood to Valyermo, CA along Big Pines Hwy.

- Dates: Last weekend of **September from Friday 9/27 through Sunday 9/29.**
- We'll be staying in cabins at Lions Camp at Teresita Pines, a retreat nestled amongst pine trees with all the home away from home comforts, and it is located on the San Andreas Fault! Only 10 minutes from Wrightwood (a hiking and ski resort town). There is also a camping area.
- Miles Kenney will be our primary field trip guide/speaker, who completed his dissertation in this area when he was at the University of Oregon. He completed his undergrad at SDSU.
- Monte Marshall will give a talk on a paper he wrote for this field trip, titled "The Evolution of Our Understanding of the San Andreas Fault."
- Over a dozen scenic field trip stops revealing the interrelationship between late Quaternary time-transgressive sedimentation on the Victorville Fan, and related uplift, folding, and faulting of underlying bedrock.
- A geologic map specifically for this field trip is being prepared! We are planning to include it with the guidebook.

The field trip is limited to **the first 50 paid attendees**, so make sure to send in your registration forms ASAP!! **Last Day to Register is September 6th, 2024!**

*Click the link below to download the registration form that has more exciting field trip details!

[Download Information / Reservation Form](#)

UPCOMING 2024 SDAG MEETINGS

| | |
|--|---|
| *September 27-29, 2024 | SDAG Annual Field Trip, to the San Andreas Fault Zone in the Wrightwood area, Transverse Range (no meeting this month) |
| October 16, 2024 | Dr. Mike Ziegler (Carole Z's husband) on gravitation, at Casa Guadalajara |
| *November 6, 2024 (1 st Wednesday) | Joint Meeting with AEG Inland Empire Section / Jahn's Lecturer Cynthia Palomares at Fallbrook Gem & Mineral Society. |
| December 18, 2024 | Traditional Holiday Celebration at the NAT with Tom Demere. |

*Departure in regularly scheduled meeting date (**Highlights**)

July 20th SDSU Geology Alumni Trash Pickup on Sunrise Highway

Taken by Monte Murbach



Earthquake Engineering Research Institute

EERI's San Diego Regional Chapter will host the 6th annual Kenji Ishihara Colloquium Series on Earthquake Engineering at the University of California, San Diego on September 12-13, 2024.

The full-day colloquium will take place on Thursday, September 12, with two sessions: "Punctuated Resilience, Climate Change, and Bio-Geotechnics," (featuring speakers Christopher Wills, Thomas O'Rourke, J. Carlos Santamarina, and Alejandro Martinez) and "Next-Generation Liquefaction Modeling of Liquefaction Triggering and Surface Manifestation (featuring speakers Steve Kramer, Jonathan Stewart, Scott Brandenburg, Ken Hudson, and Kristin Ulmer). View the [colloquium schedule here](#) and [speaker abstracts here](#).

On Friday, September 13, the series will continue with a three-quarter-day short course on “USGS Software Tools for Site-Specific Ground Motion Hazard Analysis” from 8:00 AM to 2:30 PM. The course will provide an update of the 2023 USGS National Seismic Hazard Map and USGS ToolBox for ground motions, led by Nicolas Luco and Peter Powers from USGS and Jorge F. Meneses from Worley Consulting and the San Diego Chapter). View more information [about the Friday course here](#).

Participants may register separately for the Thursday colloquium and the Friday short course. [Register here](#) soon for early-bird rates—prices will increase after August 30, 2024!

[SDAG PUBLICATIONS](#)

<https://www.sandiegogeologists.org/Publications.html>

[JOB ANNOUNCEMENTS](#)

<https://www.sandiegogeologists.org/Jobs.html>

[2024 SDAG MEMBERSHIP](#)

Renew or become a new SDAG Member - 2024 Member Dues are Due!

On-line Payment (\$25 Member; \$5 Student):

<https://www.sandiegogeologists.org/MemberForm.pdf>

Mail in or Bring FORM to Meeting:

<https://www.sandiegogeologists.org/MemberForm.pdf>

[DID YOU KNOW THAT SDAG HAS A FACEBOOK PAGE?](#)

Here is a link to the SDAG Facebook page:

<https://www.facebook.com/sandiegogeologists.org>

2024 Corporate SDGS Sponsors

Renew or become a new 2024 SDAG Sponsor - Minimum \$100 includes annual Membership.

<https://www.sandiegoeologists.org/Sponsors.html>

On-line Payment or Mail in Form:

<https://www.sandiegoeologists.org/SponsorForm.pdf>

DIAMOND Sponsors +\$1,000



<https://handpmg.com>

H&P Mobile GeoChemistry, Inc. is an industry leading provider of environmental lab services.



Kuper Consulting LLC specializing in aggregate characterization, reclamation & permitting.
tom@kupercon.com & dorian@kupercon.com



Geocon Incorporated <https://www.geoconinc.com>

A professional engineering consulting firm providing comprehensive geotechnical engineering.

Dr. Pat Abbott

<https://www.sdsu.edu/experts-directory/patrick-abbott>

To Promote Geologic Knowledge



GEOTOURS
EXPLORE THE WORLD

<https://www.geotours.us> Matt Ebner has led GeoTours groups to 82 countries.

**Anonymous
Sponsor**

RUBY Sponsors +\$500



ENGEEO has an office in San Diego and offices throughout the United States, New Zealand and Australia. ENGEEO offers geotechnical, environmental, water resources engineering and construction services.

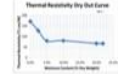
PROJECT X CORROSION ENGINEERING



Soil Corrosivity Lab
Corrosion Packages recommended by corrosion engineer & metallurgist or order "a la carte".
3-Day or Less Turn-Around-Time.
Only 400g soil sample needed!



Caltrans Accredited



Thermal Resistivity
Thermal Resistivity Dry-Out Curve from zero to 110% of proctor moisture with 3-Day or less Turn-Around-Time.
Only 3 lbs of soil needed!

<https://projectxcorrosion.com>

EMERALD Sponsors +\$100



| | |
|---|--|
| Dave Bloom | Tom Lamb |
| Todd Wirths | Lowell E. & Diana Lindsay |
| Dr. Monte Marshall SDSU Geology Professor Emeritus | Chris Livesey http://www.geotekusa.com/ |
| Larry Cann | Joan & Dave Kimbrough |
| Joe Coronas | San Diego Car Accident Attorneys |
| Greg Cranham Consulting Geologist | Carolyn Glockhoff Caro-Lion Enterprises |
| Dr. Vic Camp | Tod Clark - Pacific Drilling Co. |
| John Hoobs | Gerald Shiller |
| Dr. Margaret R. Eggers Eggers Environmental, Inc. | Monte & Diane Murbach Murbach Geotech |
| Phil Farquharson - Geology Guy | Carole L. Ziegler |
| Eldon Gath Earth Consultants International | Scott Snyder |
| GEI - Geotechnical Exploration Inc. | Starbucks Coffee Company Cardiff CA |
| Cari Gomes - Pinao Consulting | David and Jan Steller |
| Rob Hawk | Dr. Anne Sturz |
| Stan Helenschmidt Helenschmidt Geotechnical, Inc. | Sue Tanges |
| Kip Hering | John Teasley |
| George H. Ramos Jr. & Associates San Diego Criminal Defense Attorney | Mark Holt Discovering Lost America |
| Randy Wagner | Mary Walke |
| Anonymous Sponsor | Custom Diamond Rings Vanessa Nicole Jewels |