

# SAN DIEGO ASSOCIATION OF GEOLOGISTS

[www.sandiegogeologists.org](http://www.sandiegogeologists.org)

---

## SDAG MEETING ANNOUNCEMENT

**Wednesday, February 20, 2008**

### ***SOURCES OF HIGH-CHLORIDE WATER TO WELLS IN COASTAL SOUTHERN CALIFORNIA***

*presented by*

**Dr. Robert Anders, U.S. Geological Survey**

**Where:** Catalina Room (southern end of MVCC) **SEE MAP**  
Marina Village Conference Center  
1936 Quivira Way, San Diego, CA 92109

**When:** 5:30 pm – Social Hour  
6:30 pm – Dinner  
7:30 pm – Program

**Directions:** FROM INTERSTATE 5: Take the SEA WORLD DRIVE exit. From SEA WORLD DRIVE, take WEST MISSION BAY DRIVE on your right. When you see the large green sign that says QUIVIRA ROAD, get in the farthest left of the two left turn lanes. Turn left, go one very short block and turn left again. Drive about one half mile and MARINA VILLAGE will be on your right.

FROM INTERSTATE 8: Take the WEST MISSION BAY DRIVE exit to the right. You will be on INGRAHAM STREET for a short distance from which you will take the next exit marked WEST MISSION BAY DRIVE on your right. When you see the large green sign that says QUIVIRA ROAD, get in the farthest left of the two left turn lanes. Turn left, go one very short block and turn left again. Drive about one half mile and MARINA VILLAGE will be on your right.

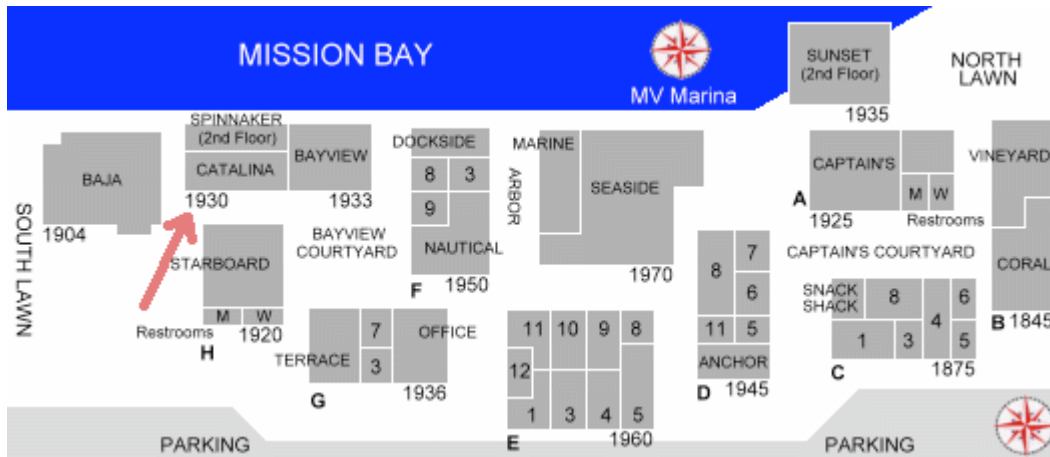
**Dinner:**

BUFFET: Caesar salad, carved baroner beef, oven herb roasted chicken, oven roasted baby red potatoes, green beans almondine, baked rolls/breads

**Note:** a special entree will be prepared for vegetarians, but it will not be put out on the buffet; vegetarians should specifically request the vegetarian entree when they visit the buffet.

**Cost:** \$30 per person, \$15 for students, \$5 discount for CURRENT SDAG members and their guests. Add \$5 if you did not make a reservation.

**Reservations:** Make your reservation **online** at [www.sandiegogeologists.org](http://www.sandiegogeologists.org) **no later than noon, Monday, February 18th**



## 2008 SDAG MEETING SCHEDULE - Mark your Calendars!

Meetings are usually on the 3<sup>rd</sup> Wednesday of the month but may change to accommodate speaker and meeting place schedules. Check here for updates!

March 19	TBD
April 16	Stephanie Schwabe

### 2008 EXECUTIVE COMMITTEE

**PRESIDENT** - Sarah Gray; University of San Diego, Ph: (619) 260-4098; fax: (619)260-6874; [sgray@sandiego.edu](mailto:sgray@sandiego.edu)  
**VICE PRESIDENT** - Scott Snyder; Ninyo & Moore; Ph: (858) 576-1000; [sdag2006@prodigy.net](mailto:sdag2006@prodigy.net)  
**SECRETARY** - Bryan Miller-Hicks; [geobry@aol.com](mailto:geobry@aol.com)  
**TREASURER** - Chuck Houser; PetraGeotechnical Inc.; Ph: (858) 485-5530; [chouser@petra-inc.com](mailto:chouser@petra-inc.com)  
**PUBLICATIONS** - Lowell Lindsay; Sunbelt Publications; Ph: (619)258-4911 x111; fax:(619)258-4916; [llindsay@sunbeltpub.com](mailto:llindsay@sunbeltpub.com)  
**WEBMASTER** - Carolyn Glockhoff; Caro-Lion Enterprises, Ph: (858) 549-3396; [carolyn@caro-lion.com](mailto:carolyn@caro-lion.com)

### DR. ROBERT ANDERS, U.S. GEOLOGICAL SURVEY

**Robert Anders** is a Research Hydrologist with the U.S. Geological Survey. During his 15-year career with the USGS, Robert has focused his research on the application of water-quality and environmental tracers to develop a more comprehensive understanding of the fate and transport of anthropogenic contamination associated with regional ground-water systems. Studies commonly involve analysis of chemical, microbiological, and isotopic data collected from surface- and ground-water samples, completion of field-scale infiltration experiments using wastewater tracers and surrogates for enteric pathogens, and development of geochemical and mathematical models. Robert's educational background includes receiving a BS and MS in Geological Sciences from San Diego State University and a PhD in Civil Engineering from the University of California in Irvine.

## Abstract

### SOURCES OF HIGH-CHLORIDE WATER TO WELLS IN A COASTAL SOUTHERN CALIFORNIA AQUIFER

**Robert Anders**, USGS San Diego WSC, 4165 Spruance Rd., Ste. 200, San Diego, CA, 92101

The U.S. Geological Survey currently is assessing the regional ground-water resources in the San Diego area. The regional assessment was designed as an integrated set of five drainage-basin investigations in order to most effectively gather detailed information about the largely unresearched and areally extensive San Diego Formation. The initial part of that assessment included the installation of multiple-depth monitoring wells to identify sources of high-chloride ground water to wells in the San Diego, Sweetwater, and Tijuana River drainage basins. Data collected from these multi-level well sites include geologic and geophysical logs, cores from selected depths, water-quality samples analyzed for a broad range of constituents including major and minor ions, trace elements, volatile organics, pesticides, wastewater indicators, stable isotope, and water levels. The preliminary evaluation of the water-quality data suggests that the dissolution of soluble salts characteristic of the underlying marine deposits is the predominant source of high-Cl<sup>-</sup> ground water in these drainage basins; however, seawater intrusion could become a predominant source of high Cl<sup>-</sup> water to the San Diego Formation and overlying alluvial deposits in the future.

---

---

## ANNOUNCEMENTS

Presidents Corner, February 2008

For my first "President's Corner" I would like to express my gratitude to 2007 President Dave Bloom for all he has done (and continues to do) for SDAG during the past four years. Although Dave "officially" retired as president at the end of the year, I asked him to fill in for me in January, when I was in Tahiti. He also continues to spearhead other SDAG activities. I'd also like to thank all of our corporate sponsors, and also our "super corporate sponsors", Jan and Dave Steller for continued financial support of SDAG. FYI, I was not in Tahiti drinking pina colodas on the beach but "working very hard" teaching a course called the "Geology and Oceanography of Tropical Islands" on the islands of Moorea and Huahine in the Society Islands. I would have loved to have some of you along to give me some expert perspective on the volcanic rocks there and some of the geologic structures... (...Maybe a future SDAG One Stop Wonder???)

Last month Dave organized a One Stop Wonder led by Wes Danskin of the USGS to visit a drill site at Balboa Park. This month, we will hear more about the program with a talk by Dr. Robert Anders of the USGS entitled "Sources of High-Chloride Water to Wells in Coastal Southern California", which should provide a nice follow up to the visit. Robert's presentation had originally been scheduled for later in the spring, but our scheduled speaker, Stephanie Schwabe, who was going to speak about her research in blue holes in the Bahamas, got an offer to shoot a BBC documentary in the Bahamas and had to reschedule for April.

If you have any suggestions for One Stop Wonders, speakers, activities or programs for SDAG, please let me know. Happy Valentines Day and I'll see you on the 20<sup>th</sup>!

Sarah

**National Association of Geoscience Teachers Far Western Section Spring 2008 Field Conference**  
*Geoscience Investigations in Northern San Diego County and Beyond: Student-Directed Explorations*  
**March 14-16, 2008**, hosted by Palomar, MiraCosta, and CSU San Marcos. We hope that you'll join us for an exploration of geoscience field trips in and around northern San Diego County. Unlike some NAGT field trips that explore remote locations, much of this conference will be held in an urban setting and highlight some of the field trips we do during half-day or full-day trips with students enrolled in our geology, geography, oceanography and Earth science classes. See [www.palomar.edu/earthscience](http://www.palomar.edu/earthscience) for more information.

---

---

**From the Coast Geological Society 2008 Desert Symposium Field Trip:** April 19-21, 2008, "Development of the Colorado River and its entry into the Salton Trough." The field trip will explore geographic extent of the Bouse Formation and contrast fresh water deposits with deposits containing marine fossils. Examine sediments at Anza-Borrego that indicate when the Colorado River entered the Salton Trough. Drive from eastern Mojave Desert pinon-juniper plateaus to the Sonoran vegetation of the Colorado Desert. Contact [wpresch@fullerton.edu](mailto:wpresch@fullerton.edu) more information.

---

---

**Rocks with Provenance Needed for a Reference Collection for Typing and Sourcing San Diego Co. Artifacts**

The San Diego Archaeological Center and local archaeologists need a county-wide reference collection of local rocks from outcrops. The collection will be an important resource for archaeologists involved in typing and sourcing stone artifacts from the San Diego area.

Norrie Robbins, adjunct faculty in the Dept. of Geological Sciences at SDSU, is spearheading this volunteer effort. She notes that geologists use a much wider variety of descriptors for rocks than do archaeologists. One of the objectives of this project is to cross-reference archaeological categories with geological ones to help develop a mutually understandable terminology and to improve sourcing. Rock specimens in the reference collection will be identified by spatial coordinates and both geological and archaeological descriptors.

Please contact Norrie ([nrobbins@geology.sdsu.edu](mailto:nrobbins@geology.sdsu.edu), 619-303-9095) with any questions and to arrange pick up of specimens. Specimens may also be placed in her mailbox at SDSU or dropped off at the Center (please indicate Attention: Rebecca Nathan). In addition, Dr. Robbins or Dr. Tim Gross will be available at most meetings of the San Diego County Archaeological Society (SDCAS) and San Diego Association of Geologists (SDAG) to accept specimens. Building the reference collection is a long-term project. There is no time limit for making your contributions.

---

---

On Friday, February 1, from 10am-noon, a few SDAG members made it on short notice to the **USGS Balboa Park deep monitoring well site**. Members included Norrie Robbins, Rob Hawk, Doug Peeler, Monte Marshall, and Dave Bloom. Bill Elliott, Mike Hart, and a few others made it to the site earlier.

The well was drilled using direct mud rotary and for most of the way, tri-cone bits. The 1498-foot well will have a set of nested piezometers to monitor groundwater parameters. For more information on the project: <http://ca.water.usgs.gov/sandiego/>

The drill reached total depth the day before. A storyboard showing progress and thoughts on what formations were encountered, with samples of cuttings on the adjacent table, were there for us to exchange ideas. There was also a well written article in the San Diego Union-Tribune on Saturday:

<http://www.signonsandiego.com/news/metro/20080202-9999-1m2water.html>

Rob Hawk mentioned that data from the downhole sonic log might help provide data to support new seismic requirements for downtown high rise construction. USGS geologist Steve Crawford is using Monte Marshall's gravity study of the San Diego region as a reference for drilling. Monte may use the results of this USGS project to refine his gravity model.

We look forward to Wes's next deep well scheduled for the Otay River valley sometime in the next few weeks.

- Dave

## 2008 CORPORATE SPONSORS - THANK YOU!!

Corporate sponsors provide a significant portion of SDAG's operating and scholarship budget. In addition to monthly recognition for your contribution, you are entitled to a free Internet "link" from [SDAG's Website](#). We also list Corporate Sponsors in our annual SDAG Field Trip Volume. **Please consider SDAG sponsorship in 2009!**

<a href="#">Dr. Richard Berry</a>	<a href="#">Geocon, Inc.</a>
<a href="#">H&amp;P Mobile Geochemistry</a>	<a href="#">Dr. Sarah Gray - University of San Diego</a>
<a href="#">Sherry Bloom</a> , Coldwell Banker Real Estate	David Bloom - <a href="#">General Dynamics Information Technology</a>
Joe Coronas, <a href="#">City of San Diego</a>	Lowell Lindsay, <a href="#">Sunbelt Publications</a>
Dr. Margaret Eggers <a href="#">Eggers Environmental, Inc.</a>	Phil Farquharson, <a href="#">CG-Squared Productions</a>
Sue Tanges, Southland Geotechnical	<a href="#">Julie Moore, SPL Laboratories</a>
William J. Elliott, Engineering Geologist	<a href="#">Ninyo &amp; Moore</a>
<a href="#">Dr. Monte Marshall</a>	<a href="#">Dr. Anne Sturz</a>
<a href="#">Anderson Drilling</a>	<a href="#">GeoSoils, Inc.</a>
Katherine Freese	David and Jan Steller
<a href="#">Geo-tech Imagery</a> , Woodrow Higdon	Carole L. Ziegler
<a href="#">Carolyn Glockhoff</a> , Caro-Lion Enterprises	Monte and Diane Murbach
<a href="#">Southwest Geophysics, Inc.</a>	Jim Ashby & Eric Hendrix - <a href="#">Mission Geoscience, Inc.</a>
<a href="#">Pat Brooks</a>	
Jan and Dave Steller	
<a href="#">Mike Palmer</a>	<a href="#">Hargis and Associates, Inc.</a>

### JOB OPENINGS!

**Layne GeoSciences**, a division of *Layne Christensen Company*, the nation's largest groundwater resource development contractor, is seeking candidates for a *Senior Level Hydrogeologist* position. This position will be based in our Fontana, CA facility. Qualified candidates will possess:

- BS/MS in Geology, Hydrogeology, or Engineering Geology with emphasis on groundwater resources
- Minimum 8-10 years of experience in performing hydrogeological studies (e.g., groundwater exploration and/or water resource development, production well installation and design, wellfield design, surface and borehole (geophysics)
- Excellent written and verbal communication skills, good computer skills

The successful candidate will be involved in hydrogeological studies at project locations primarily in the southwestern US. Candidate may have periodic travel requirements and must be a motivated, self-starting individual looking for a challenging, key position in an expanding organization.

Qualified candidates are encouraged to send a resume to: *Layne GeoSciences* ATTN: Mr. Tony Morgan *Manager-West Coast Operations* 11001 Etiwanda Avenue Fontana, CA 92337, 909-390-2833 909-390-6097 FAX

Resumes should be submitted by email to [tmorgan@laynechristensen.com](mailto:tmorgan@laynechristensen.com).

We are a drug-free and smoke-free workplace. EOE/M/F/D/V

#### **Geologist/Hydrogeologist II - Brown and Caldwell**

Evaluate, select, and apply standard geological techniques, procedures, and criteria to make adaptations and modifications. Work on assignments with clear and specified objectives. Investigate limited number of variables. Direct field crews drilling bore holes and collect samples of rocks and soil for chemical analysis.

**Qualifications:** MS degree or BS degree and 2-3 years of professional geological or hydrogeological experience.

**Contact Candy Engelstad**, HR/Administrative Manager, Brown and Caldwell, [cengelstad@brwncald.com](mailto:cengelstad@brwncald.com)

Tel: (858) 514-8822 Fax: (858) 514-8833

URS Corporation, a nationwide, multidisciplinary consulting firm and the largest design firm in the country, has a strong project backlog in San Diego County in the transportation and water resources markets. We are seeking qualified candidates for the following positions for our San Diego office:

**Engineering Geologist** (Requisition #URS16201): Geologist/Engineering Geologist with 0 to 5 years of experience in consulting engineering firm; preferably with master's degree. Responsible for supervising field explorations, geologic mapping, and report preparation. Should be experienced in logging borings in soil and rock, knowledge of Caltrans investigation procedures a plus.

**Geotechnical Engineer** (Requisition #URS24208): Civil/Geotechnical Engineer with 0 to 5 years of experience in consulting engineering firm; preferably with master's degree. Responsible for planning field and laboratory programs, engineering analyses, and report preparation. Strong analytical skills and communication skills a must. URS is an Equal Opportunity Employer and strongly supports diversity in our work force (M/F/V/D). We offer competitive salaries and a comprehensive benefits package. For immediate consideration, please submit to [mike\\_blackmore@urscorp.com](mailto:mike_blackmore@urscorp.com) or apply on-line under the Careers section of our website ([www.urscorp.com](http://www.urscorp.com)) using the requisition number shown in parentheses above.

---

---

**Tetra Tech EC**, a world leader in environmental engineering and consulting, is seeking an **Entry Level Geologist in our San Diego, CA office**.

The qualified candidate will have a Bachelor of Science degree in Geology, hydrogeology, or related field with 0-3 years experience. Primary responsibility will be to assist senior personnel in the planning and execution of projects. The chosen candidate will learn a variety of field sampling and drilling methods for site investigation and remediation projects and perform the acquisition of samples (soil and groundwater) in the field. Good analytical and writing skills required. Up to 50% of time may be in the field on project sites mostly in the Bay area. Tetra Tech EC, Inc. is an Equal Opportunity Employer and we value team-oriented workplace and workforce diversity. We invite resumes from all interested parties including women, minorities, veterans and persons with disabilities. Tetra Tech offers their employees a comprehensive compensation package and the opportunity to work on large scale government projects.

Candidates who are interested in joining our dynamic team should submit a resume to Tetra Tech EC at [northwest.web@tteci.com](mailto:northwest.web@tteci.com). Resumes should include salary requirements. Please visit our website at [www.tteci.com](http://www.tteci.com) or [www.tetratech.com](http://www.tetratech.com) to see the array of services that we provide and exciting projects we are currently working on.

---

---

**TN & Associates, Inc.** specializes in environmental services, natural resources, infrastructure engineering, and construction services. Our San Diego office is currently looking to fill the following positions:

**Staff Geologist:** Geologist to perform office and field assignments for environmental site assessment and remediation projects. Position will involve soil borings, monitoring well installations, soil and water sampling, historical research investigations, data management, construction documentation and construction QA/QC, and report writing. Ability to adapt to both office and field environments a must. OSHA 40-hour training a plus. Periodic travel is required. **Project Geologist:** Geologist with 3 to 7 years experience required in conducting all aspects of field investigations including limited site assessments, multi-task remedial investigations and remedial actions with a strong emphasis in technical writing skills. The ideal candidate will have experience in data analysis and reporting. PG registration and OSHA 40-hour training a plus. Work will entail some fieldwork and travel, mainly within California. Experience with government projects (DOD, USACE, AFCEE, Navy and USEPA) landfills and stormwater engineering/compliance a plus.

We offer a competitive salary, benefits package and friendly working environment. Equal Opportunity Employer. Please mail or fax your resume and letter of interest to: T N & Associates, Inc., 2247 San Diego Avenue, Suite 238, San Diego CA 92110, fax 619-291-8100.

---

---

**CDM** is looking for a fulltime **Engineering Geologist** to join its geotechnical division in the West Coast. The successful candidate will be responsible for the following:

- Conduct geologic field investigations on a wide range of public and private projects involving seismic evaluations, landslides, and subsurface soil, rock and water conditions for dams, buildings, water and waste water treatment facilities, transportation projects and remedial actions.
- Perform and supervise geotechnical and geo-environmental analysis, design, and construction engineering services.
- Provide project management for geotechnical and geo-environmental projects including the preparation of scope, schedules and budgets.
- Contribute to business development and proposal efforts and prepare technical reports.

- **Requirements:**

- Demonstrate the ability to perform quality-engineering geology services while adhering to project scope, budget, and schedule.
- Must have at least 10 years experience in geological engineering.
- M.S. in engineering geology or related discipline required
- Must be a CA Certified Engineering Geologist (CEG)
- Major project experience involving seismic and fault investigation is a must.
- OSHA 40-hour HAZWOPER training desirable.
- Excellent written and verbal communication skills required.

CDM has consistently earned industry recognition for our innovative project solutions. Recognition by respected professional organizations, such as the American Academy of Environmental Engineers, the American Council of Engineering Companies, and the Design-Build Institute of America, is a testament to CDM's delivery of exceptional service and the right total solutions for each client's needs. We are an equal opportunity employer. Qualified candidates can send resumes to [mcshefferylj@cdm.com](mailto:mcshefferylj@cdm.com).

---

---

### **Principal Hydrogeologist**

Looking to make a real impact at work? Ready to "Never be bored"? Natural born leader? Work for an industry leader.....Join MACTEC.

**MACTEC Engineering and Consulting, Inc.** is a leading consulting firm providing engineering, environmental and remedial construction services to public and private clients worldwide. Operating with over 3,000 employees in 100 offices nationwide with a global reach, MACTEC is currently ranked 31st among *Engineering News-Record's* top 500 design firms.

**MACTEC's** Irvine office is in search of a **Principal Hydrogeologist** to lead the geological and hydrogeological efforts, manage a team of committed technical staff members and advance business development opportunities within a variety of clients and projects. This is an excellent opportunity for the "natural born leader" who wants to utilize their technical and leadership skills!

#### **Scope of Role:**

1. Provides hydrogeological guidance and support for soil and groundwater remediation.
2. Develops and presents new approaches and services within environmental consulting market
3. Assumes project management roles and leads site investigation efforts
4. Conducts fate and transport modeling, pump tests and capture zone analysis
5. Develops site specific hydrogeological model.
6. Prepares and deliver technical reports, communications and presentations.

#### **Key Qualifications:**

1. BS/MS/PhD (Geology/Hydrogeology)
2. Min 10 years experience, must have consulting experience as well
3. Must have groundwater modeling experience, CA certification preferred
4. PG, CHG registration in CA required
5. Excellent communication and leadership skills

**MACTEC's benefit offerings include health, dental, vision, short and long term disability, life insurance, paid vacation, sick, holidays, a 401(k) match and tuition reimbursement. More information can be found on our website at [www.MACTEC.com](http://www.MACTEC.com)**

#### **Interested?**

Please apply today via our website: [www.MACTEC.com/](http://www.MACTEC.com/) - click on Careers / CA- Irvine

---

---

Since 1986, clients have turned to **Ninyo & Moore** for innovative solutions to complex geotechnical and environmental challenges. As a leading geotechnical and environmental sciences engineering and consulting firm, Ninyo & Moore provides specialized services to clients in both the public and private sectors. With offices in Colorado, California, Nevada and Arizona, the firm is fully committed to being responsive, cost-efficient, and thorough in meeting its clients' project needs and objectives.

Ninyo & Moore Geotechnical & Environmental Sciences Consultants has immediate employment opportunities in our Denver, Irvine, Las Vegas, Oakland, Phoenix, and San Diego offices. Positions include Engineers and Geologists of all levels, including **Staff Engineers and Geologists, Project Engineers and Geologists, Staff and Project Environmental Scientists, Chief Geotechnical Engineer, and Construction Field and Laboratory Technicians.**

The successful candidates should have a BS or MS degree for staff-level positions and five years or more of experience for project to senior-level positions. The candidates should be detailed oriented and have excellent verbal and written communication skills. Professional Engineer (PE) and/or Professional Geologist (PG) registrations preferred.

Ninyo & Moore offers a competitive salary, excellent benefits and an opportunity for professional growth. Please visit our website for complete and detailed job descriptions and to submit your resume in confidence at [www.ninyoandmoore.com/careers](http://www.ninyoandmoore.com/careers) or mail to our corporate office at 5710 Ruffin Road, San Diego, CA 92123, Attention: Human Resources. EOE

---

---

**Hargis + Associates, Inc.,** a San Diego based consulting firm specializing in **hydrogeology and engineering**, and **SDAG Corporate Sponsor** currently has opportunities in our San Diego, California office. We are currently looking to fill the following positions:

**CAD Technician:** Ideal candidate is a highly qualified professional for preparation of engineering and geologic graphics. Position requires experience in *AutoCAD* and with engineering process design. Experience with *Civil 3D*, *Land Development Desktop*, *Autoplant*, and *Arcview* a plus.

**Engineer:** Candidate would have a B.S. Degree in Chemical, Civil, or Mechanical Engineering, EIT Certification and/or a Masters Degree is a plus. Only entry level candidates will be considered. Candidate should possess strong writing and presentation skills. Position will be based in San Diego, California, and will require some travel and field work. Valid driver's license and U.S. Citizenship required. OSHA 40-hour training preferred, but not mandatory.

**Hydrogeologist:** Candidate would have a B.S. Degree in Geology and M. S. Degree would be a plus. Entry level position, with work including soil and groundwater sampling, well installation, aquifer test analysis, and report preparation. Candidate should possess strong writing and presentation skills. Candidate with Hydrogeology coursework or GIS background is a positive. Position will be based in San Diego, and will require travel and field work. Only entry level candidates will be considered. Valid driver's license and U.S. Citizenship required. OSHA 40-hour training preferred, but not mandatory.

**Staff Hydrogeologist:** Position requires minimum a B.S. Degree in Geology, and 3 to 5 years relevant experience, including experience with soils and groundwater sampling, well installation, work plan and report preparation, task management, cost estimating and scheduling. Candidate should possess strong organizational, writing and presentation skills. California Professional Geologist (PG), or ability to obtain within two years, groundwater modeling experience, and Masters degree is a plus. Position will be based in San Diego, and will require some travel and field work. Valid driver's license and U.S. Citizenship required. OSHA 40-hour training required.

Hargis + Associates offer competitive salaries and benefits, and a challenging work atmosphere. Hargis + Associates is an Equal Opportunity Employer. To learn more about Hargis + Associates, please visit our website at: [www.hargis.com](http://www.hargis.com).

No phone calls please. Qualified candidates should send resumes, along with a cover letter summarizing experience and salary requirements to:

Hargis + Associates, Inc.  
Attention: Jennifer Layton  
2365 Northside Drive, Suite C-100  
San Diego, CA 92108

---

**The San Diego Natural History Museum** is run and operated by the San Diego Society of Natural History, a private non-profit scientific organization incorporated in 1874. The Museum's mission is to interpret the natural world through research, education and exhibits; to promote understanding of the evolution and diversity of Southern California and the peninsula of Baja California; and to inspire in all a respect for nature and the environment.

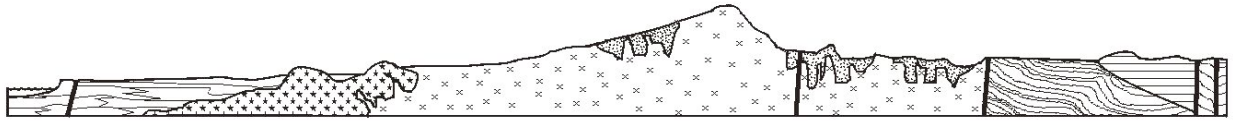
Within the Museum, the Department of PaleoServices (DPS) specializes in paleontological resource management. Our focus is on the recognition, recovery, and preservation of the significant and unique paleontological resources that occur in this region. The activities of DPS are helping to preserve significant fossil assemblages and are directly contributing to the growth of the important paleontological research collections at the Museum. We are currently looking to fill the following position:

**Paleontological Field Manager:** Position responsibilities include coordination of paleontological field activities (i.e., supervision of field monitors in prospecting for and collection of fossils and the recording of stratigraphic, taphonomic, geographic, and topographic data) and production of final project reports that summarize the methods and preliminary results of paleontological salvage activities. Other duties include generation of initial discovery letter reports for City, County, and/or State agency managers and generation of paleontological resource assessment technical reports. Opportunities also include paleontological field work in the Southern California region and working with the extensive fossil collections of the San Diego Natural History Museum.

Qualified candidates must have at least a B.S. Degree in Geology or Paleobiology; 2 to 3 years of relevant experience (especially sedimentary geology and paleontology); excellent supervisory/managerial, verbal, written, and interpersonal skills; and a strong work ethic, intense drive, and initiative for quality and customer service. This position is a regular, full-time salaried position with a generous benefits package (e.g., full medical and 401K plan). Compensation will be based on individual qualifications and experience (annual salary range \$40,000 to \$60,000).

Please send resumes to Yvonne Kugies ([ykugies@sdnhm.org](mailto:ykugies@sdnhm.org))





# SAN DIEGO ASSOCIATION OF GEOLOGISTS

[www.sandiegogeologists.org](http://www.sandiegogeologists.org)

## 2008 MEMBERSHIP FORM

NAME: \_\_\_\_\_

Please type or print clearly, and check your chosen delivery address below.

Home Address: \_\_\_\_\_

Include in directory \_\_\_\_\_  
\_\_\_\_\_

Work Address: \_\_\_\_\_

Include in directory \_\_\_\_\_  
\_\_\_\_\_

*Please include company or other affiliation*

Preferred Mailing Address (Check One):  Home  Work

E-mail Address: \_\_\_\_\_

Website: \_\_\_\_\_

Field(s) of Interest: \_\_\_\_\_  
\_\_\_\_\_

Phone: Home: ( ) \_\_\_\_\_ Work: ( ) \_\_\_\_\_ Cell: ( ) \_\_\_\_\_

**NEW POLICY:** *Your membership dues include email delivery of the monthly newsletter. If you wish to receive a hardcopy of the newsletter through US Mail, please add \$10.00 to your membership dues.*

Dues:	_____ Student Member (email delivery only)	\$ 5.00
(check choice)	_____ Regular Member (email delivery only)	\$ 25.00
	_____ Subscription to hardcopy newsletter	\$ 10.00
	_____ Corporate Sponsor (email delivery only)	\$100.00

New Member  Continuing Member

*(Name as you would like it to appear in guidebook and website)*

Date: \_\_\_\_\_ Check for change of mailing address:

Please enclose a check payable to SDAG, and mail to:

San Diego Association of Geologists  
PMB 157  
5694 Mission Center Road, Suite 602  
San Diego, CA 92108

**San Diego Association of Geologists  
PMB 157  
5694 Mission Center Road, Suite 602  
San Diego, CA 92108**