

# SAN DIEGO ASSOCIATION OF GEOLOGISTS

[www.sandiegogeologists.org](http://www.sandiegogeologists.org)

## SDAG MEETING ANNOUNCEMENT

WEDNESDAY, August 15, 2012

An Introduction to the Dr. John D. Cooper Archaeological and Paleontological Curation Center

*Presented by*

Meredith Rivin

Dr. John D. Cooper Archaeological and Paleontological Curation Center

**Where:** **The Jolly Roger Restaurant**

1900 North Harbor Drive, Oceanside, 92054  
(760) 722-1831

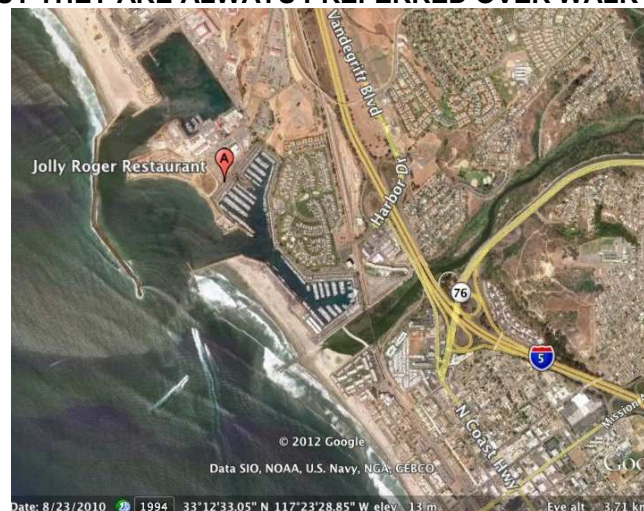
**When:** 5:30 pm – Social Hour  
6:30 pm – Dinner  
7:15 pm – Program

**Dinner:** Choice of teriyaki chicken, prime rib, or pesto pasta

**Cost:** \$30 per person, \$5 discount for members, STUDENTS: \$20. Add \$5 if you did not make a reservation.

**Reservations:** Make your reservation **online** at [www.sandiegogeologists.org](http://www.sandiegogeologists.org) no later than noon on **FRIDAY August 10<sup>th</sup>**.

**RESERVATIONS CANNOT BE GUARANTEED AFTER FRIDAY AT 12 NOON BUT THEY ARE ALWAYS PREFERRED OVER WALK-INS**



## **SPEAKER ABSTRACT**

### **An Introduction to the Dr. John D. Cooper Archaeological and Paleontological Center**

Meredith Rivin

Dr. John D. Cooper Archaeological and Paleontological Curation Center

The Dr. John D. Cooper Archaeological and Paleontological Curation Center (The Cooper Center) was established as a partnership between California State University, Fullerton, and the County of Orange to manage and promote outreach and research on the County's vast archaeological and paleontological collections. Improvements included the construction of laboratory, office, and new climate-controlled collections space, which opened in July, 2011, and the Center became fully staffed in April of 2012. In a short amount of time, The Cooper Center has established an extremely successful and popular volunteer program, with over 40 volunteers, students, and interns who collectively donate over 200 hours a week. Almost 15,000 fossil specimens and archaeological artifacts have been cataloged and curated, representing a history of Orange County going back 180 million years. The collections represent almost unlimited research potential with global significance. Outreach efforts include temporary exhibits throughout the County, and a strong social networking presence, including a series of educational shows on a dedicated channel on YouTube, The Cooper Channel, developed entirely by volunteers.

---

## **SPEAKER BIO**

Meredith Rivin is the Associate Curator of Paleontology at the John D. Cooper Archaeology and Paleontology Center and a Museum Associate at the Los Angeles County Museum of Natural History. She received her undergraduate degree in Geology at California State Polytechnic University, Pomona, and received her Master's in Geology at California State University, Fullerton. She has over ten years of experience in paleontological mitigation, with a broad base of experience in the geology and paleontology of the Orange County, California, area. Her primary interest is in the paleoecology and paleodiversity of marine mammals, primarily cetaceans, and is currently working on early Miocene toothed mysticete whales from Laguna Canyon, California. In her spare time, Meredith enjoys stand-up paddleboarding and spending Saturdays as an animal care volunteer at the Pacific Marine Mammal Center in Laguna Beach.

---

## 2012 SDAG MEETING SCHEDULE – Mark Your Calendars!

Meetings are usually on the 3<sup>rd</sup> Wednesday of the month but may change to accommodate speaker and meeting place schedules. Check here for updates!

September 19, 2012	<b>Dr. David Lynch: Fumaroles Recently Exposed by the Shrinking Salton Sea, Imperial County, California</b>
October 17, 2012	<b>TBA</b>
November 21, 2012	<b>TBA</b>



### 2012 EXECUTIVE COMMITTEE

**PRESIDENT** – Todd Wirths; Cogstone Resource Management, Inc. Ph: (858) 337-0098; [todd@wirths.com](mailto:todd@wirths.com)

**VICE PRESIDENT** – Cari Gomes; cg7783@yahoo.com

**TREASURER** – Brian J. Olson; FSR Engineering; Ph: (858) 750-9243; [bolson@fsrengineering.com](mailto:bolson@fsrengineering.com)

**SECRETARY** – Jennifer Bauer Morton; geologyjen@yahoo.com

**PUBLICATIONS** – Lowell Lindsay; Sunbelt Publications; Ph: (619) 258-4911, x111; fax:(619) 258-4916; [llindsay@sunbeltpub.com](mailto:llindsay@sunbeltpub.com)

**WEBMASTER** – Carolyn Glockhoff; Caro-Lion Enterprises, Ph: (858) 549-3396; [carolyn@caro-lion.com](mailto:carolyn@caro-lion.com)



## PRESIDENT'S CORNER

Last month's meeting at Phil's BBQ was a hit- I promise you we'll be back there soon. I was unable to attend the meeting, but I heard Phil Pharq's talk was simply phabulous- thanks to Phil phor philling in as speaker on a short notice!

For this month's meeting, a change of latitude. We're heading up to the Jolly Roger in Oceanside, where Meredith Rivin will introduce us to Orange County's Cooper Center, a state-of-the-art repository for the region's immense paleontological and archeological collections. Unlike San Diego and Imperial Counties, who have the San Diego Natural History Museum as the traditional go-to destination for fossils and artifacts, Orange County did not have a local institution specifically constructed for housing and curating these items until the opening of the Cooper Center. It's about time! (Thanks to our VP Cari for landing this speaker and venue!)

Other news- you've probably heard about the \$53.9 million "found" in a state parks department special fund recently. Friends4Picacho had just received a grant of \$15,000 from the California State Parks Foundation, increasing the amount of pledges, donations and now grants to save Picacho SRA to \$45,800, when this tidbit was announced. The State wanted to trim \$22 million from its \$364 million operating budget for all state parks, mostly in the form of closing 70 parks. It now appears all these parks will remain open. As a result of these funds being misreported to state budget officials, other special funds were scrutinized. Among several more funds found as underreported, investigators discovered an additional \$12.5 million in the Underground Storage Tank Cleanup Fund. A San Diego U-T article said, "[State officials] emphasized that, unlike with the parks department, there was no indication that the others had intentionally hidden money. They attributed the underreporting to accounting errors."

After reading articles and writing the above, and thinking hard for 15 minutes, I couldn't form a comment on these findings, only that it is unbelievable. I was involved, to a tiny degree, in the effort to save Picacho. I met many people who devoted considerable time and energy to save the park. We were all thinking "if only millions of dollars could suddenly appear and make everything ok." And now it has happened... or has it? Stay tuned next month!

Todd Wirths  
President



## ANNOUNCEMENTS

**NEW SDAG RESEARCH TOOL NOW AVAILABLE!** A comprehensive listing of all papers published by SDAG, whether as annual field trip guidebooks or special publications, is now available on our website. Entries are sorted by primary author, or chronologically by date of publication, from our first guidebook in 1972 (40 years ago!) to all things Picacho in 2011. These can be accessed or downloaded as .pdf files. They are fully searchable in Adobe Reader or Acrobat, so if you are researching a topic, "tsunami" for example, you can search for that keyword. This listing will be updated as new books are published. Thanks to Greg Peterson and Hargis + Associates, Inc., for making this possible. See the links below:

[http://www.sandiegogeologists.org/SDAG\\_Pubs\\_authors.pdf](http://www.sandiegogeologists.org/SDAG_Pubs_authors.pdf)

[http://www.sandiegogeologists.org/SDAG\\_Pubs\\_chronological.pdf](http://www.sandiegogeologists.org/SDAG_Pubs_chronological.pdf)

---

**WAREHOUSE & OFFICE SPACE AVAILABLE** in El Cajon, short-term rental or long-term lease. Warehouse from 3125 to 6250 s.f. Two offices. Mix and match to fit your needs. Ideal for geotech operations; best possible rates and we are geology-friendly! Contact Lowell Lindsay (619) 258-4911 x111, LLindsay@Sunbeltpub.com

---

**CALL FOR PAPERS – SOUTH COAST GEOLOGICAL SOCIETY** For their 2012 Field Trip, the South Coast Geological Society is looking eastward towards the Palm Springs area, the San Jacinto Mountains and the northern Coachella Valley. SCGS is currently seeking papers addressing topics related to geology, tectonics, engineering geology, hydrogeology, hydrology, Quaternary geology, paleontology, environmental issues, geomorphology, and archaeology of the eastern Inland Empire, San Jacinto Mountains, the northern Coachella Valley, and surrounding areas. The trip is going to be conducted October 12, 13 and 14th.

Currently proposed stops for the trip include exploring the area near the campground in the Mission Creek Preserve of the Wildlands Conservancy, reviewing the “knot” in the San Andreas system near San Geronio Pass, and taking a ride up the San Jacinto-Palm Springs Aerial Tram. Jeff Miller, SCGS President, is seeking additional field trip stops and field trip stop speakers. If you or someone you know has done or is doing research in the area please contact Jeff via email at [jmiller@e2managetechnology.com](mailto:jmiller@e2managetechnology.com) or by phone at (916) 747-4847.

---

**AESE ANNUAL MEETING - OCTOBER 8-11, 2012** The 46th annual meeting of the Association of Earth Science Editors, "Earth Science Editing for the World", will be held in San Diego at the Old Town Hacienda Hotel, October 8 to 11, 2012. Technical sessions will address subjects associated with editing and other issues associated with publishing any type of works related to Earth Science. There will also be an all day field trip along Sunrise Highway using Mike Walawender's Roadside Geology of Sunrise Highway for a guide, a visit to the Sky Art Sculptures in Borrego Springs topped off with a wine tasting and dinner at Menghini Winery in Julian.

Registration includes a current membership in the association. For further details, contact Carole L. Ziegler at [SDAGeditor@gmail.com](mailto:SDAGeditor@gmail.com) or visit our website at [www.AESE.org](http://www.AESE.org)

**AESE REGISTRATION FORM**  
**Association of Earth Science Editors 46th Annual Meeting**  
**San Diego, California October 8–12, 2012**

Full Name \_\_\_\_\_  
 First Name for Badge \_\_\_\_\_  
 Affiliation for Badge \_\_\_\_\_  
 Address \_\_\_\_\_  
 City/State (Province)/ZIP (Postal Code) \_\_\_\_\_ Country \_\_\_\_\_  
 Telephone (\_\_\_\_\_) \_\_\_\_\_ Fax (\_\_\_\_\_) \_\_\_\_\_  
 E-mail (for registration confirmation) \_\_\_\_\_

**REGISTRATION**

Full registration fees cover admission to all sessions, opening reception, business lunch, awards banquet, and field trip.

**AESE Members**

Full meeting	On or before September 1	\$295	After September 1	\$345	\$ _____
One day	On or before September 1	\$125	After September 1	\$150	\$ _____

**Nonmembers**

Full meeting	On or before September 1	\$345	After September 1	\$395	\$ _____
One day	On or before September 1	\$150	After September 1	\$175	\$ _____

Registration includes membership for the remainder of AESE’s fiscal year.

**Guest registration** (includes opening reception, awards banquet, field trip)  
 \$150 (U.S.) each for \_\_\_\_\_ person(s) \$ \_\_\_\_\_

If guest wishes to attend the business lunch on Tuesday, please add \$25.00 \$ \_\_\_\_\_

Guest name(s) \_\_\_\_\_

**Optional Events**

State, Provincial, and National Surveys Editors Breakfast (Tuesday, October 9)

Freelancers Breakfast (Tuesday, October 10)

There is no charge for the breakfast if you are staying at the Hacienda Hotel. If you are staying elsewhere, you will need to pay for your breakfast on that morning.

**TOTAL FEES ENCLOSED** \$ \_\_\_\_\_

I plan to attend:

<input type="checkbox"/> Opening reception (Monday evening)	<input type="checkbox"/> AESE business luncheon (Tuesday noon)
<input type="checkbox"/> Awards banquet (Wednesday evening)	<input type="checkbox"/> Field trip (Thursday)
<input type="checkbox"/> Survey breakfast (Tuesday)	<input type="checkbox"/> Freelancers breakfast (Wednesday)

Dietary and/or transportation restrictions (attach additional page if needed) \_\_\_\_\_

For further information about the meeting events, e-mail

Carole Ziegler at [sdageditor@gmail.com](mailto:sdageditor@gmail.com)

Mail registration form and check\* or money order payable to AESE in U.S.

funds to Mary Ann Schmidt  
 554 Chess Street  
 Pittsburgh PA 15205-3212  
 (412) 268-4708  
[maryanns@andrew.cmu.edu](mailto:maryanns@andrew.cmu.edu)

—NEW—  
 Pay by credit card or by PayPal at  
<http://www.aese.org/paypal.html>

**HOTEL INFORMATION**

The meeting will take place at the Best Western Hacienda Hotel in Old Town San Diego. See the winter 2012 issue of *Blueline* or the AESE website for complete details.

\*All checks must be electronically transferable to a U.S. bank that is imprinted on the check and must include the nine-digit routing number between “smiley faces.”  
 Checks without the nine-digit routing number will be returned.

# SDAG Field Trip 2012

## Waiting for Tsumani: Coastal Hazards, North San Diego County

The 2012 San Diego Association of Geologists annual field trip will examine the coastal hazards and volcanic history of northern coastal San Diego County, California. We will tour San Onofre Nuclear Power Plant and Scripps Pier on Saturday. On Sunday, we will visit Calavera Hill and Agua Hedionda Lagoon.

**DATES / ITINERARY:** September 8-9, 2012.

Bring everything you need to get a good night's sleep, as well as a folding chair and evening drinking vessel. There are picnic benches in camp. Green-minded? Bring a mess kit, save trash! Please carpool to Guajome Park.

**Saturday** – Meet at Guajome Park campground at 7:30am, approximately 45 minute drive from San Diego for a continental breakfast. Saturday lunch and snacks provided as well as a BBQ supper feast. Transportation from the park to our stops will be provided. Option for overnight camping at Guajome Park, no additional cost.

**Sunday** – Continental breakfast, box lunch, and departure. Transportation by private vehicle.

**COST:** \$140 per person. Discount for SDAG members and students. Fee includes guidebook, campground fee, five meals, snacks, and beverages. Fees are non-refundable. All ages welcome.

**FOR ADDITIONAL INFO:** Contact SDAG VP Cari Gomes at [cq7783@yahoo.com](mailto:cq7783@yahoo.com).

.....  
**2012 SDAG FIELD TRIP REGISTRATION FORM**

**TODAY'S DATE:** \_\_\_\_\_, 2012

Name(s): \_\_\_\_\_

Address: \_\_\_\_\_

City/State/Zip: \_\_\_\_\_

Phone(s): \_\_\_\_\_

Email: \_\_\_\_\_

**TOTAL NUMBER AND FEE FOR YOUR PARTY**

\_\_\_ \$140/ea. Non-members: \$ \_\_\_\_\_  
\_\_\_ \$120/ea. SDAG member\* discount: \$ \_\_\_\_\_  
    Member spouse cost w/o field trip guidebook  
\_\_\_ \$ 60/ea. Students (1<sup>st</sup> 10) \$ \_\_\_\_\_

**MAIL FORM AND CHECK (payable to SDAG) TO:**

SDAG  
663 S. Rancho Santa Fe #124  
San Marcos, CA 92078

**TOTAL ENCLOSED: \$** \_\_\_\_\_

### San Diego Geological Society, Inc. and San Diego Association of Geologists

#### General Release and Save Harmless Waiver

The undersigned is advised that dangers and hazards may include but are not limited to uneven ground, steep trails, poison oak, heat and cold stress, poisonous reptiles and insects, open flames, uncertain and possible extreme weather conditions, mad dogs, floods, earthquakes, tsunamis, radiation exposure, sun burn, and landslides on the San Diego Association of Geologists field trip planned for September 8-9, 2012, and does hereby assume any and all risks involved in connection with the field trip and does hereby save and hold harmless San Diego Geological Society, Inc., its board of directors, its committees including the San Diego Association of Geologists and its officers and members, and other participants, all claims, losses and damages (including attorney's fees and any costs involved because of said claims) on account of injury, death, property damage, and inconvenience or loss of money due to delay that may arise, by reason of my participation in the field trip. I understand that I am responsible for carrying my own medical and liability insurance.

\_\_\_\_\_  
Signature

\_\_\_\_\_  
Date

## **SEEKING JOB OPPORTUNITIES**

**Qualifications Summary and Objective:** I have 14 years experience directing surface water quality monitoring programs with a proven record of excelling in monitoring plan implementation, quality control, public notification and continuous improvement in operational effectiveness and efficiency. I have built and maintained relationships with key staff in academia, industry, and all levels of government in San Diego and California. I have a widely applicable skill set which includes: analytical thinking, communication and writing skills, data analysis and management, inter and intra-agency project coordination, and staff supervision and training. My objective is to obtain a career position with an industry leader where I can contribute my skills to build the success of my employer as well grow professionally. Detailed work experience, education and more at [www.linkedin.com/in/cbclifton2010](http://www.linkedin.com/in/cbclifton2010). Email [cbc2006@cox.net](mailto:cbc2006@cox.net) or 619-964-1776.

Contact: Clay Clifton

---

**ENGINEERING GEOLOGIST-** California PG, MS Geology, over 13 years of applied geotechnical experience, proficient in geotechnical investigations, hazard evaluations, geophysical surveys, construction management and quality control, engineering analyses, special interest in earthquake-hazard and seismic design related applications, strong problem-solving and organizational skills. Detailed resume upon request: Anna, 201-407-7461, [Afyodorova103@gmail.com](mailto:Afyodorova103@gmail.com)

---

**ENTRY-LEVEL ENVIRONMENTAL SCIENTIST** - I am a recent UCSB graduate with a double major in Environmental Studies (BS) and Geology (BS, Earth Systems emphasis) who is looking to begin a career in environmental consulting. I have prior lab experience in both professional and academic settings. I am looking to establish myself with a passionate and hard working environmental firm in the San Diego region. For further information about my credentials and work experience please contact Georgi Chertkov at [georgichertkov@gmail.com](mailto:georgichertkov@gmail.com) or call me at 505-412-3107.

---

~~~~~



## **Request for Sponsors: 2012 SDAG/SDGS and Publication SPONSORS**

On behalf of the San Diego Geological Society, Inc. (SDGS), a public benefit 501(c)3 nonprofit educational corporation, we would like to request tax deductible Donations at our San Diego Association of Geologists (SDAG). The list of paid Sponsors and the forms to become a Sponsor are located on the SDAG web site at: <http://www.sandiegogeologists.org/Sponsors.html>. Your donation will further the SDGS mission to promote geology and related fields in the greater San Diego region, operating through the San Diego Association of Geologists (SDAG), a committee of SDGS. To achieve our primary educational objective, we organize frequent field trips and maintain a program of monthly meetings featuring speakers on current geological topics. We also publish field trip guidebooks and other publications related to geology and natural history. We encourage scholarship and research by awarding scholarships from the elementary through graduate levels. With your \$100 "EMERALD" donation, your name/business will be listed as a sponsor on the SDAG web site (<http://www.sandiegogeologists.org/>) and in the monthly SDAG meeting newsletters. With your \$500 "RUBY" or \$1,000 or more "DIAMOND" level donation, your business card will also be included on the SDAG web site and in the monthly SDAG meeting newsletters. In addition, as a "\$1,000 or more DIAMOND" level donation you will be presented with a thank you plaque. Should you have any questions regarding a Sponsorship, please contact our non-profit SDGS Secretary (Diane Murbach) at 619-865-4333.

---

## CORPORATE SPONSORS



**HARGIS+ASSOCIATES, INC.**  
HYDROGEOLOGY • ENGINEERING

Hargis + Associates, Inc. is an environmental consulting firm specializing in hydrogeology and engineering. We are headquartered in San Diego, California and have offices in Mesa and Tucson, Arizona. Our practice areas include all aspects of hydrogeology and engineering.

As a client service organization, we pride ourselves in being attentive and efficient in meeting our client's needs and solving their problems. In addition to our technical expertise, communication and responsive coordination are hallmarks of our reputation.

We invite you to explore our website to learn more about our firm and the services we provide. We welcome the opportunity to discuss our consulting expertise directly with you.

*Contact: Dr. David R. Hargis*



**CASCADE DRILLING, L.P.**

LEADERS IN SAFETY

C57-938110

**Cascade Drilling, L. P.**

*Contact: Dan Chambers*



H&P Mobile Geochemistry is an industry-leading provider of environmental lab services. With ten mobile labs and five direct push sampling trucks and unparalleled experience, H&P's repertoire of environmental lab services includes many forms of environmental lab sampling techniques all the way to on site field analysis services. H&P has successfully and accurately performed environmental lab services delivering quality results to our clients for over 16 years.

2470 Impala Dr., Carlsbad, CA 92010  
(800) 834-9888

*Contact: Louise Adams or Suzie Reed*



**TETRA TECH**

complex world | CLEAR SOLUTIONS™

Tetra Tech is a leading provider of consulting, engineering, and technical services worldwide. We are a diverse company, including individuals with expertise in science, research, engineering, construction, and information technology. Our strength is in collectively providing integrated services—delivering the best solutions to meet our clients' needs. <http://www.tetrattech.com>

Contact: **Dave Bloom**



**MISSION GEOSCIENCE, INC.**

ENVIRONMENTAL & GEOTECHNICAL CONSULTANTS

Since 1991, Mission Geoscience has provided consistent and reliable professional services with our dedicated staff of highly credentialed professionals, who are committed to both timeliness and cost-effectiveness as the cornerstones of their work. MISSION's staff remains amongst the most highly respected firms in the environmental and geotechnical industry, which is why many of our clients tend to assign us their most difficult and challenging projects.

<http://www.missiongeoscience.com/>

Contact: **Jim Ashby**



**Cardno  
ERI**

**Shaping the Future**

At Cardno ERI, we're experts at providing safe, high quality, cost-effective solutions to environmental concerns. We're large enough to tackle extensive, complex projects, yet small enough to provide exceptional service in a timely manner while paying close attention to controlling costs. In short, we combine the expertise, technology, and dedicated service you need to receive the best possible solutions to your environmental concerns. <http://www.cardnoeri.com>

Contact: **Steve Zigan**

- [Dr. Pat Abbott](#) - SDSU Prof. of Geology, Emeritus
- Sally & Dennis Avery
- [Dr. Richard Berry](#) - SDSU Prof. of Geology and Geophysics, Emeritus
- Curtis Burdett
- Joe Coronas - [City of San Diego](#)
- Greg Cranham - Consulting Geologist
- Dr. Margaret R. Eggers, CHG - [Eggers Environmental, Inc.](#)
- William J. Elliott, Engineering Geologist
- Phil Farquharson - [CG-Squared Productions](#)
- Carolyn Glockhoff - [Caro-Lion Enterprises](#)

- Cari Gomes
- [Dr. Sarah Gray](#)
- Rob Hawk [City of San Diego](#)
- Jonas & Associates
- Lowell A. Lindsay and Diana Lindsay - [Sunbelt Publications/AESE](#)
- [Dr. Monte Marshall](#) - SDSU Prof. of Geology and Geophysics, Emeritus
- Monte and Diane Murbach - [Murbach Geotech](#)
- [Ninyo & Moore](#) - Jonathan Goodmacher
- SEALASKA Environmental Services, LLC, Mukesh Mehta, PG, CEG

- Les Reed – Geotechnical Exploration Inc.
- Bob Smillie – TerraCosta Consulting Group Inc.
- David and Jan Steller ("two-fer" - thanks!)
- [Dr. Anne Sturz](#)
- Sue Tanges - Southland Geotechnical Consultants
- Terra Costa Consulting Group, Inc.
- David & Jan Steller
- Mary Walke
- Carole L. Ziegler
- Don Wilson Clark and Katy Freese
- Gerald Shiller
- <http://www.youtubedownloadersite.com/>

**Add yourself to this list** - Sponsors, Corporate Sponsors, and Patrons provide a significant portion of SDGS's and SDAG's operating and scholarship budgets. SDGS is a 501(c)3 public benefit nonprofit educational corporation. For more information, please see our Sponsorship Form.