

SAN DIEGO ASSOCIATION OF GEOLOGISTS

www.sandiegogeologists.org

SDAG MEETING ANNOUNCEMENT

WEDNESDAY, July 18, 2012

Quaternary Limestones of San Salvador Islands, Bahamas and Jurassic Sandstones and Holocene Sand, United States: Comparative Eolian Sedimentology

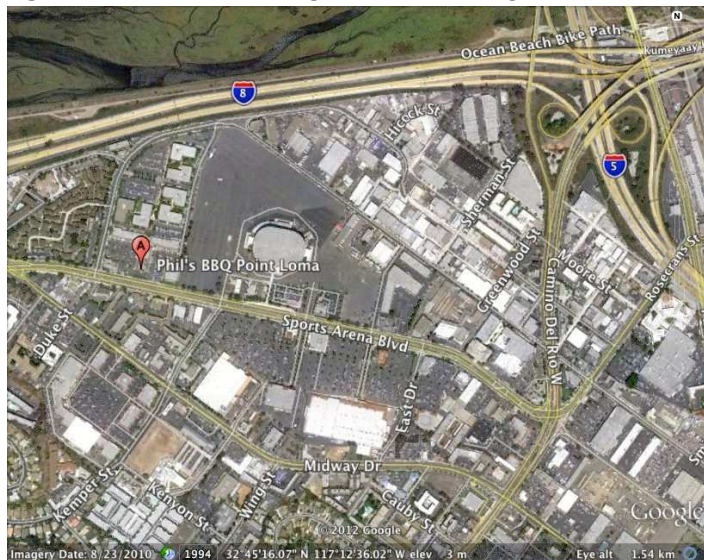
Presented by

Dr. Mario Caputo
San Diego State University

- Where:** **Phil's Barbecue Point Loma**
3750 Sports Arena Boulevard, San Diego, 92110
(619) 226-6333
- When:** 5:30 pm – Social Hour
6:30 pm – Dinner
7:15 pm – Program
- Dinner:** Choice of Baby Back Ribs, Chicken, or Veggie Burger. Includes sweet baked beans and fresh coleslaw.
- Cost:** \$30 per person, \$5 discount for members, STUDENTS: \$20. Add \$5 if you did not make a reservation.

Reservations: Make your reservation **online** at www.sandiegogeologists.org no later than noon, **Monday, July 16th**.

**RESERVATIONS CANNOT BE GUARANTEED AFTER MONDAY AT 12 NOON
BUT THEY ARE ALWAYS PREFERRED OVER WALK-INS**



SPEAKER ABSTRACT

Quaternary Limestones of San Salvador Islands, Bahamas and Jurassic Sandstones and Holocene Sand, United States: Comparative Eolian Sedimentology

Dr. Mario Caputo
San Diego State University

Pleistocene and Holocene clastic limestones or calcarenites - composed of sand-size CaCO_3 grains - on San Salvador Island, Bahamas preserve eolian or wind-blown sedimentary structures and textures that are comparable to those preserved in Jurassic eolian quartzarenites of the southern Colorado Plateau Province USA, and to those preserved in modern eolian sand. Outcrop occurrence and bulk sedimentary features suggest a nonmarine, wind-blown coastal depositional setting for the Bahamian calcarenites despite the marine nature of component ooid and skeletal framework grains. General eolian deposits owe their origin mainly to sedimentation on dunes by ripple-, grainflow-, and grainfall-mechanisms, which control size, packing, and sorting of grains; and porosity, permeability, geometry, and distribution of respective wind-ripple, sandflow, and grainfall strata. Grain textures affect retention of pore-liquids, which further influence degree of cementing and weathering patterns of these strata. Sand size in most eolian deposits is fine (0.125-0.250 mm) to medium (0.250-0.500 mm). In eolian calcarenites, intraparticle pores render the coarser CaCO_3 grains of higher specific gravity mechanically equivalent to quartz sand.

Formation of coastal carbonate dunes on San Salvador Island was limited by weather, sediment supply, subaerial cement, plants, and island size. Dune development began as small coppice or “veggie” dunes that evolved into juvenile coastal dune ridges and elevated wind-terraces. Later, mature dune ridges grew in increments marked by calcareous crusts, plant fossils, and reactivation surfaces. Cross-bed sets < 3 m (~10 ft) thick, sandflow foresets < 1 cm (~0.5 in) to 6 cm (~2.5 in) thick in longitudinal view, and thin, narrow sandflow lenses enclosed in grainfall laminae in transverse view suggest smaller eolian dunes. Some cross-bed sets > 3 m thick and composed mainly of sandflow foresets indicate larger dunes. Ultimately, diminished sediment supply, wave spray, and rainfall fostered dune stabilization by plants and early subaerial cementation. Consequently, entire dune-forms were preserved.

In contrast, quartz-rich eolian systems on the southern Colorado Plateau region were fed by streams flowing across the heartland of Jurassic North America from the Appalachian highlands. Favored by high sediment volume, arid weather, sparse vegetation, and great areal extent, large complex dunes migrated long distances in expansive sand seas. Cross-bed sets up to 35 m (115 ft) thick and sandflow foresets > 10 cm (4 in) thick in contact with one another in the absence of grainfall strata reflect larger dunes. Because of erosion that is intrinsic to trains of migrating, climbing bedforms, only lower parts of ancient siliciclastic eolian dunes were preserved by later burial diagenesis.

SPEAKER BIO

I was an undergraduate student of geology in the early 1970s at then-named San Diego State College, where fellow students and I were groomed for BSc degrees by some of the finest geoscientists on the west coast. With a solid foundation in sedimentology built by Pat Abbott, I aspired to study Jurassic sedimentary rocks on the Colorado Plateau with Ron Blakey in an MSc program at Northern Arizona University. In the early 1980s after 4 years with Mobil Oil Corporation, I resumed formal training in classical geology at the Colorado School of Mines and ultimately at the University of Cincinnati for a

PhD degree. In 1993, I resigned my tenure as associate professor of geology at Mississippi State University along with adjunct appointments at the Mississippi University for Women in Columbus, MS and Millsaps College in Jackson, MS to return to California. A four-time recipient of the *Outstanding Educator Award* during my 18 years at Mt. San Antonio College, I have now retired from full-time teaching, but have part-time appointments to teach sedimentary geology again at San Diego State University and at Cal Poly Pomona.

I am proud to have served the Rocky Mountain Section SEPM (Society for Sedimentary Geology) as program chair, co-author, and co-editor; the Cordilleran and Rocky Mountain Sections GSA as co-chair of oral and poster sessions; the Utah Geological Association as author and field trip co-leader; and the National Association of Geoscience Teachers as guidebook editor and conference organizer. The Pacific Section SEPM recently acknowledged my 12 years of office in the Society with honorary membership.

My publications relate to coastal geomorphology of the northern Gulf of Mexico; architecture and paleogeography of Jurassic eolian and marginal marine strata in Utah; petrology of Quaternary eolian rocks of the Bahamas; and paleoecology of Pleistocene invertebrates on marine terraces of Palos Verdes hills. Books co-authored are in progress and include laboratory manuals on oceanography and geologic disasters, and *Ancient Landscapes of California* with Ron Blakey, which is a companion volume to Blakey's *Ancient Landscapes of the Colorado Plateau*. Papers in preparation focus on tidal architecture of Jurassic strata of southern Utah, and the contents of the SDAG presentation.

~~~~~

## 2012 SDAG MEETING SCHEDULE - Mark Your Calendars!

Meetings are usually on the 3<sup>rd</sup> Wednesday of the month but may change to accommodate speaker and meeting place schedules. Check here for updates!

|                    |                                                                                                             |
|--------------------|-------------------------------------------------------------------------------------------------------------|
| August 15, 2012    | <b>2012 SDAG Field Trip Preview: Camp Pendleton Cherts</b>                                                  |
| September 19, 2012 | <b>Dr. David Lynch: Fumaroles Recently Exposed by the Shrinking Salton Sea, Imperial County, California</b> |
| October 17, 2012   | <b>TBA</b>                                                                                                  |

~~~~~

2012 EXECUTIVE COMMITTEE

PRESIDENT – Todd Wirths; Cogstone Resource Management, Inc. Ph: (858) 337-0098; todd@wirths.com

VICE PRESIDENT – Cari Gomes; cg7783@yahoo.com

TREASURER – Brian J. Olson; FSR Engineering; Ph: (858) 750-9243; bolson@fsrengineering.com

SECRETARY – Jennifer Bauer Morton; geologyjen@yahoo.com

PUBLICATIONS – Lowell Lindsay; Sunbelt Publications; Ph: (619) 258-4911, x111; fax:(619) 258-4916; llindsay@sunbeltpub.com

WEBMASTER – Carolyn Glockhoff; Caro-Lion Enterprises, Ph: (858) 549-3396; carolyn@caro-lion.com

PRESIDENT'S CORNER

Our joint meeting last month with SCGS in San Juan Capistrano was quite a success, with over 90 folks in attendance. Mike Hart's talk on slides vs. faults was as informative as it was entertaining, and I was glad the evening went off without a hitch. This month, Dr. Mario Caputo will grace us at Phil's BBQ (at their Event Center) with his address, on comparing Quaternary Bahaman sandstones with Jurassic and Recent sands from the US. As a bonus, Mario will be presenting a tribute to the SDSU geology professors of the 1970s during social hour.

The saga of Picacho continues.... In case you haven't heard, the California Department of Parks and Recreation extended the lives of 65 of the 70 parks that were slated to be axed on July 1, for at least one more year. This includes local parks Picacho SRA, Salton Sea SRA, San Pasqual Battlefield SHP, and Palomar Mountain SP. The governor signed a bill allocating an additional \$10 million to the California State Parks system for the new fiscal year. "California State Parks has also been working with nonprofit groups and local governments to keep about 40 of the parks open for the next few years. Deals are in the works for 25 more of the parks, which will stay open in the coming weeks as agreements are finalized. Picacho SRA is one of the parks awaiting a final agreement between the parks system and the nonprofit organization Friends4Picacho. The operating agreements will allow the state to keep parks open while transferring operating costs to private and public partners, at least for the short term, parks officials said." (*Yuma Sun*, June 30).

Friends4Picacho is expecting State Parks to request the funds that were recently raised to save Picacho SRA from closure. Just over \$28,000 in pledges was amassed in a span of about a month, not quite the goal of \$60,500, but a noble effort indeed. Funny item: Friends4Picacho held a fundraiser last month, which included the raffling of prizes. One of the prizes was a certificate from California State Parks, entitling the bearer of up to three nights camping at Picacho SRA. My wife Izzy won it!

Todd Wirths
President



ANNOUNCEMENTS

WAREHOUSE & OFFICE SPACE AVAILABLE in El Cajon, short-term rental or long-term lease. Warehouse from 3125 to 6250 s.f. Two offices. Mix and match to fit your needs. Ideal for geotech operations; best possible rates and we are geology-friendly! Contact Lowell Lindsay (619) 258-4911 x111, LLindsay@Sunbeltpub.com

CALL FOR PAPERS – SOUTH COAST GEOLOGICAL SOCIETY For their 2012 Field Trip, the South Coast Geological Society is looking eastward towards the Palm Springs area, the San Jacinto Mountains and the northern Coachella Valley. SCGS is currently seeking papers addressing topics related to geology, tectonics, engineering geology, hydrogeology, hydrology, Quaternary geology, paleontology, environmental issues, geomorphology, and archaeology of the eastern Inland Empire, San Jacinto Mountains, the northern Coachella Valley, and surrounding areas. The trip is going to be conducted October 12, 13 and 14th.

Currently proposed stops for the trip include exploring the area near the campground in the Mission Creek Preserve of the Wildlands Conservancy, reviewing the “knot” in the San Andreas system near San Geronio Pass, and taking a ride up the San Jacinto-Palm Springs Aerial Tram. Jeff Miller, SCGS President, is seeking additional field trip stops and field trip stop speakers. If you or someone you know has done or is doing research in the area please contact Jeff via email at jmiller@e2managetech.com or by phone at (916) 747-4847.

AESE ANNUAL MEETING - OCTOBER 8-11, 2012 The 46th annual meeting of the Association of Earth Science Editors, "Earth Science Editing for the World", will be held in San Diego at the Old Town Hacienda Hotel, October 8 to 11, 2012. Technical sessions will address subjects associated with editing and other issues associated with publishing any type of works related to Earth Science. There will also be an all day field trip along Sunrise Highway using Mike Walawender's Roadside Geology of Sunrise Highway for a guide, a visit to the Sky Art Sculptures in Borrego Springs topped off with a wine tasting and dinner at Menghini Winery in Julian.

Registration includes a current membership in the association. For further details, contact Carole L. Ziegler at SDAGeditor@gmail.com or visit our website at www.AESE.org

AESE REGISTRATION FORM
Association of Earth Science Editors 46th Annual Meeting
San Diego, California October 8–12, 2012

Full Name _____
 First Name for Badge _____
 Affiliation for Badge _____
 Address _____
 City/State (Province)/ZIP (Postal Code) _____ Country _____
 Telephone (_____) _____ Fax (_____) _____
 E-mail (for registration confirmation) _____

REGISTRATION

Full registration fees cover admission to all sessions, opening reception, business lunch, awards banquet, and field trip.

AESE Members

Full meeting	On or before September 1	\$295	After September 1	\$345	\$ _____
One day	On or before September 1	\$125	After September 1	\$150	\$ _____

Nonmembers

Full meeting	On or before September 1	\$345	After September 1	\$395	\$ _____
One day	On or before September 1	\$150	After September 1	\$175	\$ _____

Registration includes membership for the remainder of AESE’s fiscal year.

Guest registration (includes opening reception, awards banquet, field trip)
 \$150 (U.S.) each for _____ person(s) \$ _____

If guest wishes to attend the business lunch on Tuesday, please add \$25.00 \$ _____

Guest name(s) _____

Optional Events

State, Provincial, and National Surveys Editors Breakfast (Tuesday, October 9)

Freelancers Breakfast (Tuesday, October 10)

There is no charge for the breakfast if you are staying at the Hacienda Hotel. If you are staying elsewhere, you will need to pay for your breakfast on that morning.

TOTAL FEES ENCLOSED \$ _____

I plan to attend:

<input type="checkbox"/> Opening reception (Monday evening)	<input type="checkbox"/> AESE business luncheon (Tuesday noon)
<input type="checkbox"/> Awards banquet (Wednesday evening)	<input type="checkbox"/> Field trip (Thursday)
<input type="checkbox"/> Survey breakfast (Tuesday)	<input type="checkbox"/> Freelancers breakfast (Wednesday)

Dietary and/or transportation restrictions (attach additional page if needed) _____

For further information about the meeting events, e-mail

Carole Ziegler at sdageditor@gmail.com

Mail registration form and check* or money order payable to AESE in U.S.

funds to Mary Ann Schmidt
 554 Chess Street
 Pittsburgh PA 15205-3212
 (412) 268-4708
maryanns@andrew.cmu.edu

—NEW—
 Pay by credit card or by PayPal at
<http://www.aese.org/paypal.html>

HOTEL INFORMATION

The meeting will take place at the Best Western Hacienda Hotel in Old Town San Diego. See the winter 2012 issue of *Blueline* or the AESE website for complete details.

*All checks must be electronically transferable to a U.S. bank that is imprinted on the check and must include the nine-digit routing number between “smiley faces.” Checks without the nine-digit routing number will be returned.

PUBLISHING GEOSCIENCE FOR THE WORLD

Association of Earth Science Editors 46th Annual Meeting

San Diego, California October 8–12, 2012

It's that time of year again — time to get the word out about **presenting at the 2012 meeting** in San Diego. We're excited ... are you?

This year's theme is "Publishing Geoscience for the World." Held in San Diego, California, the meeting will begin Monday evening with an opening reception. Technical sessions will be held on Tuesday and Wednesday, and Thursday's field trip will round out the week with a viewing of the desert "Sky Art" sculptures.

The theme of geoscience "for the world" looks at how geoscience research and publishing interacts with the world at large. The goal is to express this theme in the session topics for each day of technical sessions: The first day will focus on aspects of editing and publishing not only in the field of science but in all fields, as well as our relationship with the larger world of publishing, and the second day will cover issues faced by publishers and editors of science in particular, including how we can connect with nonscientific readers and nonpublisher colleagues. The field trip continues the theme of geoscience "for the world" by showing how geoscience can merge with art to bring the beauty of the earth to a wider audience.

Session Topics

Below are some broad, preliminary session topics, but **feel free to speak on or suggest ANY topic**. Presentations should last about 15 minutes (with several presentations per session), and workshops can last up to two hours.

Editing and Publishing**Science!**

- Ethics and Working with Authors — topics such as how to handle problem authors or working with copyrighted material
- Freelancers and Contractors — how to be one, how to find one, how to use one
- Electronic Publishing Tools — using "apps," getting the most out of editing/publishing software, etc.
- Marketing for Organizations and Publications — for example, when, why, and how to effectively use social media
- Resources for Geoscience Editors and Authors* — tips and tricks, favorite Web sites, go-to guides
- Issues Facing Science Publishers — from surveys to professional organizations and nonprofits, how we are facing the challenges of the day
- Science Outreach — to the public, to youth, to colleagues, to cooperators
- San Diego/Southern California Geoscience
*possible roundtable or panel session

Thinking about presenting?

What do you love about the AESE? What expertise do you have to share with your fellow science and publishing professionals?

Can't think of a presentation topic?

What topics do you *want to hear*? What presentations would draw you to the meeting? Can you recommend anyone, within AESE or without, to speak on these topics?

Want to present but can't attend?

Get in touch with the AESE vice president and technical session chair Melanie Parker about presentation options (mparker@usgs.gov).

See the AESE meeting Web page (www.aese.org) or Blueline for more information.

We are also looking for volunteers to serve as session chairs. Let us know if you would like to participate in any way.

Abstracts must be **one double-spaced paragraph (about 200 words)** and should be self-contained. New or unfamiliar terminology should be defined. We discourage the use of commercial names or parenthetical statements.

The abstract should stand alone as a very short version of the presentation. It should not simply list the topics covered in the presentation or merely describe its contents. Do not refer to the presentation itself ("In this presentation, I will discuss ...").

Submit files in **Word (.doc) or text (.txt) format**; special characters must be noted. Be sure to include your contact information.

Abstracts for presentations must be submitted by **August 1, 2012**, to Rowena Mills, AESE editor, at hrmills777@yahoo.com.

SDAG Field Trip 2012

Waiting for Tsumani: Coastal Hazards, North San Diego County

The 2012 San Diego Association of Geologists annual field trip will examine the coastal hazards and volcanic history of northern coastal San Diego County, California. We will tour San Onofre Nuclear Power Plant and Scripps Pier on Saturday. On Sunday, we will visit Calavera Hill and Agua Hedionda Lagoon.

DATES / ITINERARY: September 8-9, 2012.

Bring everything you need to get a good night's sleep, as well as a folding chair and evening drinking vessel. There are picnic benches in camp. Green-minded? Bring a mess kit, save trash! Please carpool to Guajome Park.

Saturday – Meet at Guajome Park campground at 7:30am, approximately 45 minute drive from San Diego for a continental breakfast. Saturday lunch and snacks provided as well as a BBQ supper feast. Transportation from the park to our stops will be provided. Option for overnight camping at Guajome Park, no additional cost.

Sunday – Continental breakfast, box lunch, and departure. Transportation by private vehicle.

COST: \$140 per person. Discount for SDAG members and students. Fee includes guidebook, campground fee, five meals, snacks, and beverages. Fees are non-refundable. All ages welcome.

FOR ADDITIONAL INFO: Contact SDAG VP Cari Gomes at cg7783@yahoo.com.

2012 SDAG FIELD TRIP REGISTRATION FORM

TODAY'S DATE: _____, 2012

Name(s): _____

Address: _____

City/State/Zip: _____

Phone(s): _____

Email: _____

TOTAL NUMBER AND FEE FOR YOUR PARTY

___ \$140/ea. Non-members: \$ _____

___ \$120/ea. SDAG member* discount: \$ _____

Member spouse cost w/o field trip guidebook

___ \$ 60/ea. Students (1st 10) \$ _____

TOTAL ENCLOSED: \$ _____

MAIL FORM AND CHECK (payable to SDAG) TO:

SDAG

663 S. Rancho Santa Fe #124

San Marcos, CA 92078

San Diego Geological Society, Inc. and San Diego Association of Geologists

General Release and Save Harmless Waiver

The undersigned is advised that dangers and hazards may include but are not limited to uneven ground, steep trails, poison oak, heat and cold stress, poisonous reptiles and insects, open flames, uncertain and possible extreme weather conditions, mad dogs, floods, earthquakes, tsunamis, radiation exposure, sun burn, and landslides on the San Diego Association of Geologists field trip planned for September 8-9, 2012, and does hereby assume any and all risks involved in connection with the field trip and does hereby save and hold harmless San Diego Geological Society, Inc., its board of directors, its committees including the San Diego Association of Geologists and its officers and members, and other participants, all claims, losses and damages (including attorney's fees and any costs involved because of said claims) on account of injury, death, property damage, and inconvenience or loss of money due to delay that may arise, by reason of my participation in the field trip. I understand that I am responsible for carrying my own medical and liability insurance.

Signature

Date

SEEKING JOB OPPORTUNITIES

Qualifications Summary and Objective: I have 14 years experience directing surface water quality monitoring programs with a proven record of excelling in monitoring plan implementation, quality control, public notification and continuous improvement in operational effectiveness and efficiency. I have built and maintained relationships with key staff in academia, industry, and all levels of government in San Diego and California. I have a widely applicable skill set which includes: analytical thinking, communication and writing skills, data analysis and management, inter and intra-agency project coordination, and staff supervision and training. My objective is to obtain a career position with an industry leader where I can contribute my skills to build the success of my employer as well grow professionally. Detailed work experience, education and more at www.linkedin.com/in/cbclifton2010. Email cbc2006@cox.net or 619-964-1776.

Contact: Clay Clifton

ENGINEERING GEOLOGIST- California PG, MS Geology, over 13 years of applied geotechnical experience, proficient in geotechnical investigations, hazard evaluations, geophysical surveys, construction management and quality control, engineering analyses, special interest in earthquake-hazard and seismic design related applications, strong problem-solving and organizational skills. Detailed resume upon request: Anna, 201-407-7461, Afyodorova103@gmail.com

ENTRY-LEVEL ENVIRONMENTAL SCIENTIST - I am a recent UCSB graduate with a double major in Environmental Studies (BS) and Geology (BS, Earth Systems emphasis) who is looking to begin a career in environmental consulting. I have prior lab experience in both professional and academic settings. I am looking to establish myself with a passionate and hard working environmental firm in the San Diego region. For further information about my credentials and work experience please contact Georgi Chertkov at georgichertkov@gmail.com or call me at 505-412-3107.

~~~~~

## **Request for Sponsors: 2012 SDAG/SDGS and Publication SPONSORS**

On behalf of the San Diego Geological Society, Inc. (SDGS), a public benefit 501(c)3 nonprofit educational corporation, we would like to request tax deductible Donations at our San Diego Association of Geologists (SDAG). The list of paid Sponsors and the forms to become a Sponsor are located on the SDAG web site at: <http://www.sandiegogeologists.org/Sponsors.html>. Your donation will further the SDGS mission to promote geology and related fields in the greater San Diego region, operating through the San Diego Association of Geologists (SDAG), a committee of SDGS. To achieve our primary educational objective, we organize frequent field trips and maintain a program of monthly meetings featuring speakers on current geological topics. We also publish field trip guidebooks and other publications related to geology and natural history. We encourage scholarship and research by awarding scholarships from the elementary through graduate levels. With your \$100 "EMERALD" donation, your name/business will be listed as a sponsor on the SDAG web site (<http://www.sandiegogeologists.org/>) and in the monthly SDAG meeting newsletters. With your \$500 "RUBY" or \$1,000 or more "DIAMOND" level donation, your business card will also be included on the SDAG web site and in the monthly SDAG meeting newsletters. In addition, as a "\$1,000 or more DIAMOND" level donation you will be presented with a thank you plaque. Should you have any questions regarding a Sponsorship, please contact our non-profit SDGS Secretary (Diane Murbach) at 619-865-4333.

---

## CORPORATE SPONSORS



**HARGIS+ASSOCIATES, INC.**  
HYDROGEOLOGY • ENGINEERING

Hargis + Associates, Inc. is an environmental consulting firm specializing in hydrogeology and engineering. We are headquartered in San Diego, California and have offices in Mesa and Tucson, Arizona. Our practice areas include all aspects of hydrogeology and engineering.

As a client service organization, we pride ourselves in being attentive and efficient in meeting our client's needs and solving their problems. In addition to our technical expertise, communication and responsive coordination are hallmarks of our reputation.

We invite you to explore our website to learn more about our firm and the services we provide. We welcome the opportunity to discuss our consulting expertise directly with you.

Contact: **Dr. David R. Hargis**



**CASCADE DRILLING, L.P.**

LEADERS IN SAFETY

C57-938110

**Cascade Drilling, L. P.**

Contact: **Dan Chambers**



H&P Mobile Geochemistry is an industry-leading provider of environmental lab services. With ten mobile labs and five direct push sampling trucks and unparalleled experience, H&P's repertoire of environmental lab services includes many forms of environmental lab sampling techniques all the way to on site field analysis services. H&P has successfully and accurately performed environmental lab services delivering quality results to our clients for over 16 years.

2470 Impala Dr., Carlsbad, CA 92010  
(800) 834-9888

Contact: **Louise Adams or Suzie Reed**



complex world | CLEAR SOLUTIONS™

Tetra Tech is a leading provider of consulting, engineering, and technical services worldwide. We are a diverse company, including individuals with expertise in science, research, engineering, construction, and information technology. Our strength is in collectively providing integrated services—delivering the best solutions to meet our clients' needs. <http://www.tetrattech.com>

Contact: **Dave Bloom**



MISSION GEOSCIENCE, INC.

ENVIRONMENTAL & GEOTECHNICAL CONSULTANTS

Since 1991, Mission Geoscience has provided consistent and reliable professional services with our dedicated staff of highly credentialed professionals, who are committed to both timeliness and cost-effectiveness as the cornerstones of their work. MISSION's staff remains amongst the most highly respected firms in the environmental and geotechnical industry, which is why many of our clients tend to assign us their most difficult and challenging projects.

<http://www.missiongeoscience.com/>

Contact: **Jim Ashby**



Shaping the Future

At Cardno ERI, we're experts at providing safe, high quality, cost-effective solutions to environmental concerns. We're large enough to tackle extensive, complex projects, yet small enough to provide exceptional service in a timely manner while paying close attention to controlling costs. In short, we combine the expertise, technology, and dedicated service you need to receive the best possible solutions to your environmental concerns. <http://www.cardnoeri.com>

Contact: **Steve Zigan**

- [Dr. Pat Abbott](#) - SDSU Prof. of Geology and Geophysics, Emeritus
- Sally & Dennis Avery
- [Dr. Richard Berry](#) - SDSU Prof. of Geology and Geophysics, Emeritus
- Curtis Burdett
- Joe Coronas - [City of San Diego](#)
- Greg Cranham - Consulting Geologist
- Dr. Margaret R. Eggers, CHG - [Eggers Environmental, Inc.](#)
- William J. Elliott, Engineering Geologist
- Phil Farquharson - [CG-Squared Productions](#)
- Carolyn Glockhoff - [Caro-Lion Enterprises](#)

- Cari Gomes
- [Dr. Sarah Gray](#)
- Rob Hawk [City of San Diego](#)
- Jonas & Associates
- Lowell A. Lindsay and Diana Lindsay - [Sunbelt Publications/AESE](#)
- [Dr. Monte Marshall](#) - SDSU Prof. of Geology and Geophysics, Emeritus
- Monte and Diane Murbach - [Murbach Geotech](#)
- [Ninyo & Moore](#) - Jonathan Goodmacher
- SEALASKA Environmental Services, LLC, Doug Peeler

- Les Reed – Geotechnical Exploration Inc.
- Bob Smillie – TerraCosta Consulting Group Inc.
- David and Jan Steller ("two-fer" - thanks!)
- [Dr. Anne Sturz](#)
- Sue Tanges - Southland Geotechnical Consultants
- Terra Costa Consulting Group, Inc.
- David & Jan Steller
- Mary Walke
- Carole L. Ziegler
- Don Wilson Clark and Katy Freese
- Gerald Shiller
- <http://www.youtubedownloadersite.com/>

**Add yourself to this list** - Sponsors, Corporate Sponsors, and Patrons provide a significant portion of SDGS's and SDAG's operating and scholarship budgets. SDGS is a 501(c)3 public benefit nonprofit educational corporation. For more information, please see our Sponsorship Form.