

SAN DIEGO ASSOCIATION OF GEOLOGISTS

www.sandiegoeologists.org

SDAG MEETING ANNOUNCEMENT

WEDNESDAY, DECEMBER 15TH, 2010

“THE YEAR IN SAN DIEGO PALEONTOLOGY”

Presented by

Dr. Tom Deméré
Curator of Paleontology
San Diego Natural History Museum

- Where:** *South Pacific Room, Bali Hai Restaurant*
<http://www.balihairrestaurant.com/>
2230 Shelter Island Drive (*map below*)
San Diego
- When:** 5:30 pm – Social Hour
6:30 pm – Dinner
7:15 pm – Program
- Dinner:** Luau Dinner Buffet
- Cost:** \$40 per person, \$10 discount for members,
STUDENTS: \$20. Add \$5 if you did not make
a reservation

Reservations: Make your reservation **online** at
www.sandiegoeologists.org no later
than noon, **Friday, December 10th**.

RESERVATIONS CANNOT BE ACCEPTED AFTER FRIDAY AT 12 NOON. IF YOU DO NOT MAKE A RESERVATION, WE CANNOT GUARANTEE YOU A MEAL.





2010 SDAG MEETING SCHEDULE - Mark your Calendars!

Meetings are usually on the 3rd Wednesday of the month but may change to accommodate speaker and meeting place schedules. Check here for updates!

January 19, 2011	TBA
February 16, 2011	TBA
March, 2011	TBA

2010 EXECUTIVE COMMITTEE

PRESIDENT – Bryan Miller-Hicks; Cuyamaca College; Ph: (619) 733-3724; bryanmillerhicks@gmail.com

VICE PRESIDENT – Chuck Houser; SCS Engineers; Ph: (858) 571-5500; CHouser@scsengineers.com

SECRETARY – Todd Wirths; Ninyo & Moore; Ph: (858) 576-1000, x2101; twirths@ninyoandmoore.com or todd@wirths.com

TREASURER – Cari Gomes; sdagtreas@sandiegoogeologists.org

PUBLICATIONS – Lowell Lindsay; Sunbelt Publications; Ph: (619) 258-4911, x111; fax:(619) 258-4916; lindsay@sunbeltpub.com

WEBMASTER – Carolyn Glockhoff; Caro-Lion Enterprises, Ph: (858) 549-3396; carolyn@caro-lion.com

SPEAKER BIO

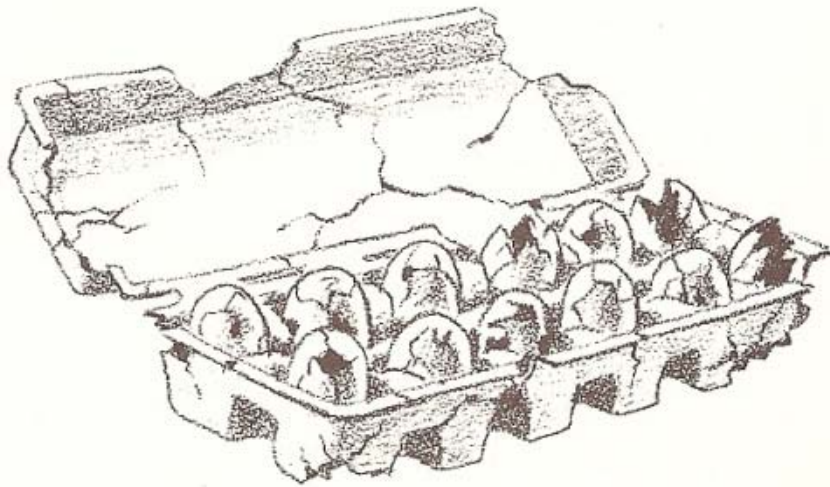
Tom Deméré

Tom has worked for the Museum since 1979. His academic history includes: SDSU - B.S. Geology; USC - M.S. Geology; UCLA - Ph.D. Evolutionary Biology. His current research focuses on the evolutionary history of baleen whales. As Curator of Paleontology, Tom has occupied the Joshua L. Baily, Jr. Chair of Paleontology at the Museum since 1994. Tom's research focuses on the evolutionary history and paleobiology of pinnipeds and cetaceans. He is also keenly interested in the geology and paleontology of southern California and Baja California and has published numerous scientific and popular articles on these subjects.

Tom also serves as Director of PaleoServices, a consulting arm of the Museum's Biodiversity Research Center of the Californias that provides paleontological resource assessment and impact mitigation services to public and private developers. This work has been responsible for the discovery, salvage, and conservation of thousands of significant fossils from construction sites in San Diego, Orange, and Riverside counties.

SPEAKER ABSTRACT

"The Year in San Diego Paleontology"



Dinosaur eggs, found remarkably preserved at Devil's Food Processor National Monument, San Diego.

PRESIDENTS CORNER, DECEMBER 2010

Another eventful year is drawing close to an end. Our end-of-2010 setting for the annual holiday dinner will be the recently renovated and lovely Bali Hai Restaurant, a perennial San Diego favorite. We are delighted that you all can join us here for cocktails, food, and fun. Although we are not holding our dinner at the SDNHM this year, we are again fortunate to have the ever reliable, distinguished and always informative and entertaining Dr. Tom Demere, to present the latest bone/fossil tale from another year full of finds and research.

The year 2010 has been another exciting and successful one for SDAG. The annual field trip, jointly organized by SDAG/SCGS, "The Lows to Highs of Anza-Borrego Desert State Park", was another amazing event, from all accounts. Thanks again to primary co-organizers Chuck Houser and Monte Murbach, with contributions from Mike Hart, Tom Rockwell, Diane Murbach, Diana and Lowell Lindsay, George Jefferson, Miles Kenney, John Peterson, and all members who attended. Also of note, this year's field trip saw participation by nine students. We all know how important it is to encourage students, and indeed, student participation at our other events and dinners seems to be increasing as well. This is great news for the future of SDAG!

This year saw an expansion in the role and activities of our umbrella organization, the San Diego Geological Society (SDGS), presided over by Dave Bloom. I will talk about some specifics of SDGS' achievements at our dinner meeting.

Other noteworthy events included One Stop Wonders. An OSW was conducted at the Los Piños Gabbro complex, thanks to Dave Bloom and Mike Walawender, on April 3. We all know what happened the next day, April 4! And of course, with extraordinary efforts by Diane Murbach in organizing vehicles and participants, SDAG members and friends explored the fresh fault features near Mexicali on May 1, guided by Dr. Tom Rockwell. There was an additional OSW to look at preparations for the raising of San Vicente Dam in Lakeside, thanks to Monte Murbach and Dave Schug.

Of course, current, fresh geologic events continue to make the news: as of today, the Tungurahua volcano in Ecuador is erupting ash and pyroclastic flows, causing evacuations from nearby villages.

Thanks to all who made this another successful year for SDAG, through your hard work and participation. My personal thanks to my fellow officers, Chuck, Todd and Cari, for all their help, and to all those others who helped me do my job for 2010. It has been great fun and an honor to be your President for 2010.

HAPPY HOLIDAYS, TO ALL.

--

Bryan Miller-Hicks
Certified Engineering Geologist

2010 SPONSORS - THANK YOU!!

Note the new nomenclature for 2010: Sponsors, Corporate Sponsors, and Patrons provide a significant portion of SDGS's and SDAG's operating and scholarship budgets. By making your payments to SDGS (a 501(c)3 public benefit nonprofit educational corporation) you may be able to

claim a tax deduction. In addition to monthly recognition for your contribution, you are entitled to additional benefits as listed on the Sponsorship Form included in this newsletter.

Corporate Sponsors	
	<p>H&P Mobile GeoChemistry, Inc. is an industry leading provider of environmental lab services. With ten mobile labs and five direct push sampling trucks and unparalleled experience, H&P's repertoire of environmental lab services includes many forms of environmental lab sampling techniques all the way to on site field analysis services. H&P has successfully and accurately performed environmental lab services delivering quality results to our clients for over sixteen years.</p>
	<p>2470 Impala Dr., Carlsbad, CA 92010 (800) 834-9888</p>
<p>Steve Zigan, Cardno ERI, szigan@eri-us.com</p>	
<p>Dr. Pat Abbott, SDSU Prof. of Geology and Geophysics, Emeritus</p>	<p>Lowell A. Lindsay and Diana Lindsay - Sunbelt Publications/AESE</p>
<p>Sally & Dennis Avery</p>	<p>Dr. Monte Marshall, SDSU Prof. of Geology and Geophysics, Emeritus</p>
<p>Dr. Richard Berry, SDSU Prof. of Geology and Geophysics, Emeritus</p>	<p>Monte and Diane Murbach, Murbach Geotech</p>
<p>David Bloom, Consulting Geologist</p>	<p>Ninyo & Moore - Jonathan Goodmacher</p>
<p>Joe Corones, SDSU Geo-Alumni Assn.</p>	<p>David and Jan Steller ("two-fer" - thanks!)</p>
<p>Greg Cranham, Consulting Geologist</p>	<p>Stone Brewing Company</p>
<p>Phil Farquharson - CG-Squared Productions</p>	<p>Sue Tanges, Southland Geotechnical Consultants</p>
<p>Carolyn Glockhoff, Caro-Lion Enterprises</p>	<p>Terra Costa Consulting Group, Inc.</p>
	<p>Carole L. Ziegler</p>

ANNOUNCEMENTS

Wanted by the San Diego Association of Geologists:

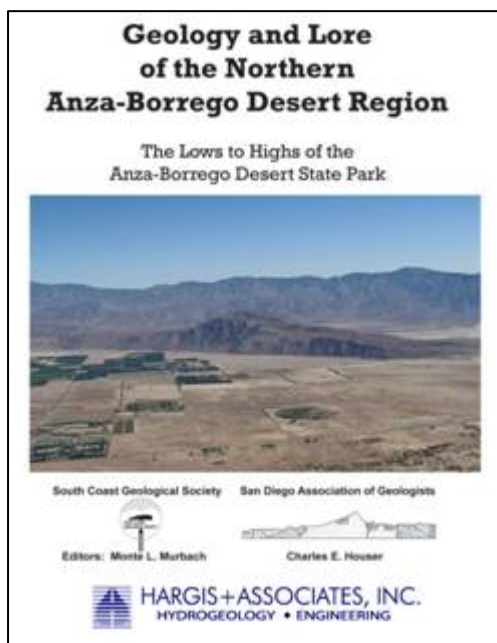
SECRETARY FOR 2011

A volunteer is desired for the soon-to-be-vacant officer position of SDAG Secretary! Interested candidates should contact any of the current officers listed above in the 2010 Executive Committee or past presidents for more information.

Request for Sponsors/Year End Tax Donation - 2010 Publication and 2011 SDAG/SDGS SPONSORS

On behalf of the San Diego Geological Society, Inc. (SDGS), a public benefit 501(c)3 nonprofit educational corporation, we would like to request tax deductible Donations at our San Diego Association of Geologists (SDAG) meeting on November 17th. If you or your firm provides a donation to SDGS by Nov. 26th, your name will be listed in the 2nd printing for the 2010 "Geology and Lore of the Northern Anza-Borrego Desert Region" and you will also be listed in all 2011 Sponsorships. The entire amount of your gift of \$100/\$500/\$1,000/\$3,000 is tax deductible to the extent permitted by law. In addition, we are specifically looking for:

1. One \$1,000 donation to be listed as the 2010 Field Trip Sponsor in the Publication.
2. One \$3,000 donation to be on the cover of the 2010 Publication. An example of a cover publication sponsor is shown below, such as with the company name Hargis and Assoc. The first \$3,000 donation will be shown on this cover:



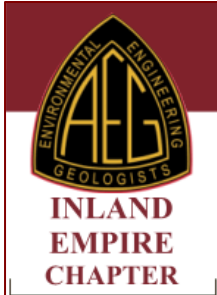
The 2010 list of paid Sponsors and the forms to become a Sponsor are located on the SDAG web site at:
<http://www.sandiegogeologists.org/Sponsors.html>.

Your donation will further the SDGS mission to promote geology and related fields in the greater San Diego region, operating through the San Diego Association of Geologists (SDAG), a committee of SDGS. To achieve our primary educational objective, we organize frequent field trips and maintain a program of monthly meetings featuring speakers on current geological topics. We also publish field trip guidebooks and other publications related to geology and natural history. We encourage scholarship and research by awarding scholarships from the elementary through graduate levels. With your \$100 "EMERALD" donation, your name/business will be listed as a

sponsor on the SDAG web site (<http://www.sandiegogeologists.org/>) and in the monthly SDAG meeting newsletters. With your \$500 "RUBY" or \$1,000 or more "DIAMOND" level donation, your business card will also be included on the SDAG web site and in the monthly SDAG meeting newsletters. In addition, as a "\$1,000 or more DIAMOND" level donation you will be presented with a thank you plaque. Should you have any questions regarding a Sponsorship, please contact our non-profit SDGS Secretary (Diane Murbach) at 619-865-4333.

MEETINGS AROUND THE REGION:

Inland Geological Society: 6 January 2011 (Thursday): "SCE El Casco Substation: Construction Excavation Monitoring Salvages an Early Irvingtonian (middle Pleistocene) Fauna and Flora," Bob Reynolds and Lloyd Sample. LSA Associates, 1500 Iowa Ave., Riverside. For more info go to <http://www.inlandgeo.org/>.



AEG—Inland Empire Section: 8 December 2010 (Wednesday): "Aeolian Sand Systems in Southeastern California Since the Latest Pleistocene and Their Evaluation Regarding Potential Impacts Associated with Solar Energy Projects", Miles Kenney, Ph.D., Kenney GeoScience. Western Science Center, 2345 Searl Parkway, Hemet. 5:00 - Social 6:00 - Dinner 7:00 - Speaker. For more info go to <http://www.aegsc.org/chapters/inlandempire/meetings/index.php>.

The **Earthquake Engineering Research Institute's (EERI)** Annual Meeting will be held February 9-12, 2011 in San Diego at the Hyatt Regency Hotel, La Jolla, CA. The meeting theme "Earthquakes without Borders" combines emergency response professionals, geologists, geotechnical engineers, structural engineers and students. The program will highlight cross-border issues, the regions' tsunami risk, integration of research and practice, application of strong motion records, and lessons learned from the major earthquakes in 2010. Meeting information and registration is available at <http://www.eeri.org/site/2011-annual-meeting>



Register Now

To save \$100 off the Standard Event Registration Fee
Before December 31, 2010

The Nielsen Environmental Field School is very pleased to announce that the complete schedule of presentations for the **2011 North American Environmental Field Conference & Exposition** is now posted on the event web site at www.envirofieldconference.com. This annual Conference, which will be held in San Diego, CA for the first time, is presented by The Nielsen Environmental Field School and sponsored by the American Institute of Hydrology, the American Institute of Professional Geologists, ASTM International, the Groundwater Resources Association of California, **H&P Mobile Geochemistry**, Schlumberger Water Services, Princeton Groundwater, and CRC Press/Taylor & Francis Publishers. Past events have attracted more than 1700 environmental professionals from around the world. Representatives from 19 different countries attended the 2010 Conference in Tampa, Florida.

The Conference, which will be held **January 10-13, 2011** at the **Hilton San Diego Resort & Spa** on Mission Bay in San Diego, California, features a unique combination of presentations focused on the theme of the meeting, "Advances and Innovations in Environmental Site Characterization, Sampling, Monitoring and Remediation Technology", including:

- A Conference featuring 58 invited platform papers discussing cutting-edge field-based environmental technology presented by the world's leading experts in their fields;
- A special platform paper session featuring an additional 9 papers on the response to the Gulf of Mexico oil spill;
- More than 75 hours of interactive indoor workshops presented by the field's top researchers and practitioners;
- More than 30 hours of hands-on, interactive outdoor workshops and equipment demonstrations featuring the latest environmental field methods and equipment; and
- An educational Exposition featuring 59 indoor and outdoor exhibits of state-of-the-science environmental equipment and services.

Detailed information on the Conference schedule, event registration and hotel accommodations can be found at the event web site or by e-mailing The Nielsen Environmental Field School at info@envirofieldschool.com.

Contact:

David M. Nielsen, Event Coordinator
The Nielsen Environmental Field School
9600 Achenbach Canyon Rd.

Las Cruces, NM 88011

Phone: (575) 532-5535, Fax: (575) 532-5978, e-mail: info@envirofieldschool.com

CALL FOR ROCK, FOSSIL, AND MINERAL DONATIONS

What to do with them:

Bring the rocks to San Diego State University. Park next to the 1st floor door at the Northeast end of the GMCS building. Carry rocks in and down the hall 100 feet to the RP Oceans lab, GMCS108. Put the rocks in the lab on desk to right if the door is open, or in front sidedoor to lab & back is about 2 minutes, which does not seem to attract the unwholesome attention of the Parking Patrol. For those with elevated authority issues, a temporary loading permit might be given with sufficient groveling at the Parking-kiosk-with-human at the foot of the Chemical Sciences Laboratory building, just off College Ave, near the corner of College and Alvarado Rd. If you would like assistance, a cart, or say to hello, please email me, Clive Dorman, at cdorman@geology.sdsu.edu ahead if possible. Otherwise, my office phone is 619-594-5707 and sometimes cell phone is working at 619-743-5876.

Arrange for a pick-up. If you emailed me, I could arrange for myself or someone to come by to collect the rocks. It would be helpful if the rocks were identified, the collection location & setting noted and a contact given. If going to a location to collect, 20 fist sized samples and perhaps photos of the setting would be useful.

Call for papers: 43d Symposium on Engineering Geology and Geotechnical Engineering, March 23-25, 2011, Las Vegas

The 43d Symposium on Engineering Geology and Geotechnical Engineering will be held March 23-25, 2011 on the campus of University of Nevada Las Vegas. Please visit the conference website at <http://2011.eggesymposium.com/> for more information and to register.

Call for abstracts: Conference attendees are encouraged to present their research and work with regard to the

conference theme, "Water, Soils and Sustainability in the Intermountain West". We are now accepting abstracts summarizing potential presentations. Presentations will be considered on any topic relevant to engineering geology and geotechnical engineering. University students, in particular, are encouraged to participate. The abstract should include title, authors' names and affiliations, and preference for oral or poster presentation. No specific formatting is required for the initial abstract submission. The deadline for abstract submission is January 10, 2011. The abstracts will be technically reviewed, and notification of acceptance will be made by January 24, 2011.

Final abstract or paper: Every presentation at the conference must be accompanied by either an abstract or full paper that will be published in the conference proceedings. The proceedings will be provided to all registrants in CD format. A limited number of paper copies will be available for sale at the conference. The CD format will be in color, whereas the paper version will be in black and white. Papers and abstracts submitted for inclusion in the proceedings must follow the formatting guidelines of the Nevada Water Resources Association (NVWRA), provided at the website: <http://www.nvwra.org/journal/>. Please also include keywords at the end of the abstract, to enable electronic searching of the CD.

The proceedings are considered as "abstract reviewed." Authors are encouraged to have colleagues carefully review their manuscripts prior to submittal. Final papers are due February 11, 2011. Prior to incorporation into the conference proceedings, the papers will be scanned for content (e.g., not overly commercial), completeness (e.g., all cited tables and figures are present), and general publication standards (e.g., figures legible). Significant problems will be communicated to the authors; revisions must be received by February 25, 2011. The EGGE organizing committee reserves the right to refuse publication of a paper that continues to have significant problems after that date.

Journal publication opportunity: In addition to the conference proceedings described above, arrangements are being made with the Nevada Water Resources Association (NVWRA) to co-publish the proceedings in a special issue of the NVWRA's online journal, focused on the 2011 EGGE symposium. This issue will be compiled after the conference. Check the conference website for more information about this opportunity.

Submittal dates:

Jan 10 2011 Abstracts due

Jan 24 2011 Paper acceptance notification

Feb 11 2011 Final papers due

Feb 25 2011 Final corrections, if any, due

These are hard deadlines; we have not allowed for any slack in the schedule.

Submit to:

Submit abstracts in pdf format to Ms. Norma Biggar, proceedings lead editor, at: 2011egge@gmail.com

Sincerely, Barbara Luke and Jim Werle, symposium co-chairs

COMMERCIAL BUILDING SPACE AVAILABLE in El Cajon

Convenient to Freeways 1-8, Hwys 52 and 128. 6250 sq. ft. warehouse with two remodeled offices in front. Contact Terry Cochran at Sunbelt Publications 619-258-4911 x110 for details.

SEEKING JOB OPPORTUNITIES!

Brian J. Olson, PG, CEG: Registered engineering geologist with 13+ years of experience in the geotechnical consulting business is seeking a new opportunity. Excellent in the office and even better in the field. Too many skills to list here. B.S. in Hydrologic Science/ Geology from UCSB, 1996. Detailed work experience, resume, and references available upon request. brianjolson@att.net (858) 750-9243.

Jared Warner: I am a graduate of San Diego State where I received both my B.S. and M.S. in geological sciences ('06 and '09). I have experience in multiple fields including production geology, fractured reservoirs, reservoir characterization, basic geologic model building, geophysics, paleontology, sedimentology, oceanography, and teaching. I've recently moved back down to San Diego after working for Occidental Petroleum and looking for immediate employment opportunities. For information on my research, contact information, or a resume please feel free to contact me at jared.j.warner@gmail.com or call me at (858) 692-3789.

JOB OPENINGS!

Paleontological Field Monitor Position: The Department of Paleontology at the San Diego Natural History Museum has openings for paleontological field monitors. Both a full time position with benefits and part time temporary positions (without benefits) are available. All work is funded through contracts. Work will include field monitoring of construction-related exposures of potentially fossiliferous sedimentary rocks (Cenozoic and upper Mesozoic marine and/or non-marine rock units) in the Southern California region. Field monitors will be expected to collect exposed fossils and record relevant stratigraphic and taphonomic data. Opportunities for fossil preparation are also possible. Depending on experience, the field monitor may also be involved in preparing final reports of findings. Must be able to lift at least 50 lbs and have a valid Driver's License.

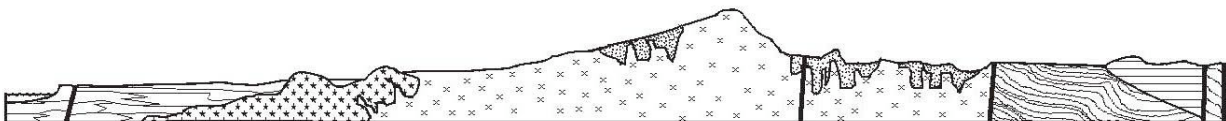
Requirements: A minimum of a B.S. in geology or a related discipline with an emphasis in paleontology. Experience in field paleontology and stratigraphy is preferred. Salary is dependent upon the applicant's experience. For general information about our paleontology mitigation program, please visit <http://www.paleoservices.org>

Start date: 15 January 2011

Please mail or email resumes to:

Melissa Soetaert (paleo@sdnhm.org; 619-255-0309)

Department of Paleontology
San Diego Natural History Museum
P.O. Box 121390
San Diego, CA 92112-1390



SAN DIEGO ASSOCIATION OF GEOLOGISTS

www.sandiegoeologists.org

2011 MEMBERSHIP FORM

NAME: _____

Please type or print clearly.

Home Address: _____

Work Address: _____

Please include company or other affiliation

E-mail Address: _____

Website: _____

Field(s) of Interest: _____

Phone: Home: () _____ Work: () _____ Cell: () _____

NOTE: Your membership dues include email delivery of the monthly newsletter.

Dues: _____ Student Member (email delivery only) \$ 5.00

(check choice)

_____ Regular Member (email delivery only) \$ 25.00

New Member Continuing Member

Date: _____

Check for change of E-mail address:

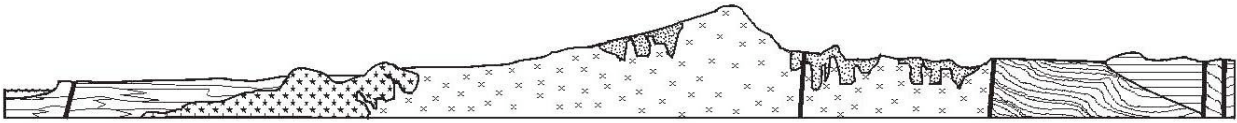
Please enclose a check payable to SDAG, and mail to:

San Diego Association of Geologists

PMB 157

5694 Mission Center Road, Suite 602

San Diego, CA 92108



SAN DIEGO ASSOCIATION OF GEOLOGISTS

2011 SPONSORSHIP FORM

NAME: _____
(as you would like it to appear in Newsletter, Website, and Guidebook)

Please type or print clearly, and check preferred mailing address below.

Residential Address: _____

Office/School Address: _____

Website: _____

Phone: Home: () _____ Office: () _____

e-mail: _____

Donation Level and Consideration: _____ EMERALD \$100.00
(In addition to monthly recognition for your contribution, you are entitled to a free Internet "link" from SDAG Website. We also list all Sponsors in any publications printed this year)

_____ RUBY \$500.00
(In addition to the above, you are entitled to an image of your business card in the monthly newsletter and SDAG Website)

_____ DIAMOND \$1,000.00
(In addition to the above, you will receive a commemorative plaque in recognition for your most generous support of the organization)

New Member / Donor

Continuing Member

Date: _____

Check for change of mailing address:

Please make check payable to San Diego Geological Society, Inc., a 501(c)3 public benefit nonprofit educational corporation (in order to claim a tax deduction), and mail to:

San Diego Geological Society, Inc.
3130 North Evergreen St.
San Diego, California 92110 *Thank you!*

Donations may also be made at monthly meetings.