

# SAN DIEGO ASSOCIATION OF GEOLOGISTS

[www.sandiegogeologists.org](http://www.sandiegogeologists.org)

## SDAG MEETING ANNOUNCEMENT WEDNESDAY, SEPTEMBER 15<sup>TH</sup>, 2010

### *“Close Encounters with Rocks of the 4<sup>th</sup> Kind”*

*Presented by*

Candace Kohl, Ph.D.

**Where:** Catalina Room (southern end of MVCC) **SEE MAP**  
Marina Village Conference Center  
1936 Quivira Way, San Diego, CA 92109

**When:** 5:30 pm – Social Hour  
6:30 pm – Dinner  
7:15 pm – Program

**Directions:** FROM INTERSTATE 5: Take the SEA WORLD DRIVE exit. From SEA WORLD DRIVE, take WEST MISSION BAY DRIVE on your right. When you see the large green sign that says QUIVIRA ROAD, get in the farthest left of the two left turn lanes. Turn left, go one very short block and turn left again. Drive about one half mile and MARINA VILLAGE will be on your right.

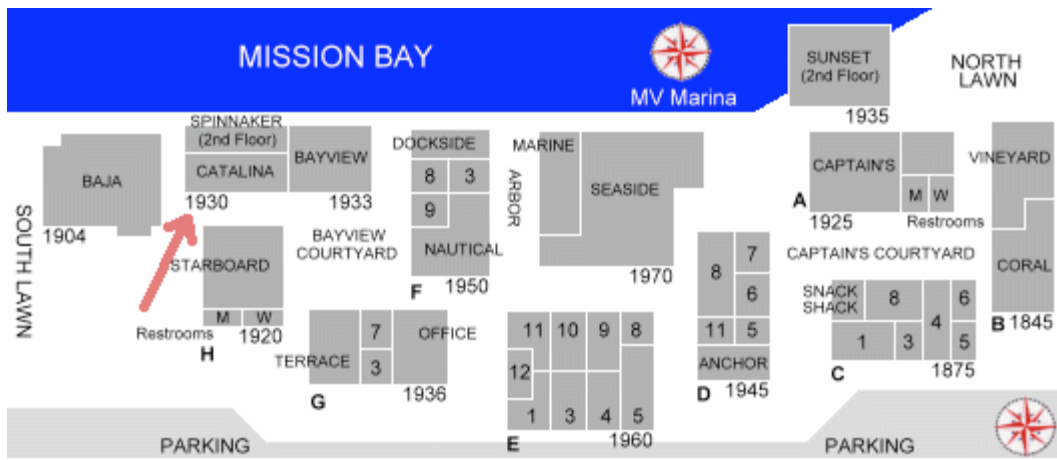
FROM INTERSTATE 8: Take the WEST MISSION BAY DRIVE exit to the right. You will be on INGRAHAM STREET for a short distance from which you will take the next exit marked WEST MISSION BAY DRIVE on your right. When you see the large green sign that says QUIVIRA ROAD, get in the farthest left of the two left turn lanes. Turn left, go one very short block and turn left again. Drive about one half mile and MARINA VILLAGE will be on your right.

**Dinner:** California Buffet. Beverage station, dessert, cash bar.

**Cost:** \$30 per person, \$5 discount for members, STUDENTS: \$20. Add \$5 if you did not make a reservation

**Reservations:** Make your reservation **online** at [www.sandiegogeologists.org](http://www.sandiegogeologists.org) **no later than noon, Monday, August 13<sup>th</sup>**.

**RESERVATIONS CANNOT BE ACCEPTED AFTER MONDAY AT 12 NOON.  
IF YOU DO NOT MAKE A RESERVATION, WE CANNOT GUARANTEE YOU A MEAL.**



## 2010 SDAG MEETING SCHEDULE - Mark your Calendars!

Meetings are usually on the 3<sup>rd</sup> Wednesday of the month but may change to accommodate speaker and meeting place schedules. Check here for updates!

October 20	<b>TBA</b>
November 17	<b>TBA; Railroad Museum</b>
December 15	<b>TBA; Bali Hai Restaurant</b>

## 2010 EXECUTIVE COMMITTEE

**PRESIDENT** – Bryan Miller-Hicks; Cuyamaca College; Ph: (619) 733-3724; [geobry@aol.com](mailto:geobry@aol.com) ; [bryanmillerhicks@gmail.com](mailto:bryanmillerhicks@gmail.com)

**VICE PRESIDENT** – Chuck Houser; SCS Engineers; Ph: (858) 571-5500; [CHouser@scsengineers.com](mailto:CHouser@scsengineers.com)

**SECRETARY** – Todd Wirths; Ph: (858) 337-0098; [todd@wirths.com](mailto:todd@wirths.com)

**TREASURER** – Cari Gomes; [sdagtreas@sandiegogeologists.org](mailto:sdagtreas@sandiegogeologists.org)

**PUBLICATIONS** – Lowell Lindsay; Sunbelt Publications; Ph: (619) 258-4911 x111; fax:(619) 258-4916; [lindsay@sunbeltpub.com](mailto:lindsay@sunbeltpub.com)

**WEBMASTER** – Carolyn Glockhoff; Caro-Lion Enterprises, Ph: (858) 549-3396; [carolyn@caro-lion.com](mailto:carolyn@caro-lion.com)

## SPEAKER BIO

### Candace Kohl

Candace Kohl received a BA in chemistry from Carleton College in Northfield Minnesota in 1969 and a PhD in cosmochemistry from UCSD in 1975. Her experimental work centered on measurements of cosmic ray-produced radioactivity in lunar material and meteorites to investigate the constancy of the solar cosmic rays, the rates and extents of various processes on the lunar surface, and the exposure histories of meteorites. Her work led directly to the extension of these techniques to date terrestrial landforms including obtaining the age of formation of Meteor Crater in Arizona. This technique has proved to be an important tool for the study of geomorphology and investigations of climate change. She has performed fieldwork on many of the impact structures in Australia with Gene Shoemaker, spent a field season hunting for meteorites on the Antarctic ice and a field season on top of the Greenland ice cap helping to obtain a 10,000-foot long ice core.

Candace has always been interested in communicating the excitement of science to the general public and has given many talks and programs at schools and other organizations. For these efforts at public outreach as well as for scientific work she has been honored with the asteroid (4899) "Candace" being named for her.

## **SPEAKER ABSTRACT**

### **"Close Encounters with Rocks of the 4<sup>th</sup> Kind"**

All geologists know there are three kinds of rocks: igneous, sedimentary, and metamorphic. This talk will focus on the fourth--METEORITIC. Candace will give an overview of these materials and the impact structures they produce on earth. This talk will be scientific but not technical.

Meteorites are the oldest solid material we have from the formation of the solar system and tell the story of those early days in ways that no terrestrial rock can. They also carry a record of what has happened in other areas of space in terms of collisional and radiation environments. We now have enough meteorites from the moon and Mars (approximately 60 from each of them) to start to be able to put together an understanding of the geology of these bodies. Meteorite impacts on earth have had a huge effect on its geologic and biologic history.

As well as important, meteorites are also really cool. Candace will have lots of samples available for close inspection. So don't miss this chance to hold pieces of the asteroid belt, the moon and Mars.



## PRESIDENTS CORNER, SEPTEMBER 2010

I have had the privilege this summer of assisting the Board of Professional Engineers and Land Surveyors (BPELS) in their efforts to put together new versions of the registration exam for Certified Engineering Geologist applicants. In June and again in August, I and other professional geologists and engineering geologists took part in day-long sessions in Sacramento. We edited previously written questions and also wrote new questions for the upcoming 2011 exams. Sorry that's all I can say, and you can't get me to divulge any specific questions that I worked on.....no matter how many microbrewery ales you try to offer me!

I know that many of us, myself included, were alarmed at the state's recent actions in folding the Board for Geologists and Geophysicists into BPELS. Some of our members and other geologists have been tracking this process, with one of the possible outcomes being a reversal of this action. I still have concerns on a number of issues, as do others of our membership. In the meantime, however, there has been and will continue to be input into the exam content and process from professional geologists, hydrogeologists, and certified engineering geologists. All the exam writing participants with whom I worked take the task quite seriously, and our mission of course is to make sure that the process of professional certification remains rigorous and comprehensive.

This month we have scheduled a great talk by Dr. Candace Kohl on the subject of meteorites: those celestial objects, those little to big chunks of rock that tell us so much about the stuff that was around during the origins of our solar system and beyond.

Fall is rapidly approaching, and that means our Annual Field Trip is as well! Our VP, Chuck Houser, and our Past Prez/current SCGS Prez, Monte Murbach, have been working hard to put this one together. Announcements and more details are below in this newsletter. Sign up as soon as you can!

**Bryan**

## 2009 and 2010 SPONSORS - THANK YOU!!

Note the new nomenclature for 2010: Sponsors, Corporate Sponsors, and Patrons provide a significant portion of SDGS's and SDAG's operating and scholarship budgets. By making your payments to SDGS (a 501(c)3 public benefit nonprofit educational corporation) you may be able to claim a tax deduction. In addition to monthly recognition for your contribution, you are entitled to additional benefits as listed on the Sponsorship Form included in this newsletter.



### Corporate Sponsor

[H&P Mobile GeoChemistry, Inc.](#) is an industry leading provider of environmental lab services. With ten mobile labs and five direct push sampling trucks and unparalleled experience, H&P's repertoire of environmental lab services includes many forms of environmental lab sampling techniques all the way to on site field analysis services. H&P has successfully and accurately performed environmental lab services delivering quality results to our clients for over sixteen years.

2470 Impala Dr., Carlsbad, CA 92010  
(800) 834-9888

<a href="#">Dr. Pat Abbott, SDSU (Emeritus)</a>	Joe Coronas, SDSU Geo-Alumni Assn.
Tod Clark - <a href="#">Pacific Drilling Co.</a>	Phil Farquharson, <a href="#">CG-Squared Productions</a>
<a href="#">Carolyn Glockhoff</a> , Caro-Lion Enterprises	Lowell Lindsay, <a href="#">Sunbelt Publications</a>
Monte and Diane Murbach, <a href="#">Murbach Geotech</a>	David and Jan Steller ("two-fer" - thanks!)
Carole L. Ziegler	<a href="#">Sherry Bloom</a> , Coldwell Banker Real Estate
David Bloom, PG	<a href="#">Dr. Monte Marshall</a> , SDSU Prof. of Geology and Geophysics, Emeritus
George Copenhaver, PG, CEG	Sue Tanges, Southland Geotechnical Consultants
Susan Booth	<a href="#">Dr. Sarah Gray - University of San Diego</a>
<a href="#">Amec Earth &amp; Environmental</a>	<a href="#">Geocon</a> , Inc.
Jim Ashby & Eric Hendrix - <a href="#">Mission Geoscience, Inc.</a>	Dr. Margaret Eggers <a href="#">Eggers Environmental, Inc.</a>
<a href="#">Dr. Richard Berry</a> , SDSU (Emeritus)	<a href="#">Ninyo &amp; Moore</a>
William J. Elliott, Engineering Geologist	<a href="#">Mike Palmer</a>
<a href="#">Hargis and Associates, Inc.</a>	<a href="#">Dr. Anne Sturz</a>
Greg Cranham, PG	<a href="#">Southwest Geophysics, Inc.</a>

## ANNOUNCEMENTS



**Final Call for Papers** for the Upcoming 2010 SDAG/SCGS  
Joint Field Guide:

**“Geology of the Northern Anza Borrego Desert State  
Park Area”**

To be published in association with this years’ SDAG/SCGS  
Joint field trip:

**“The Lows and Highs of Anza Borrego Desert State Park”**

**October 15 through 17, 2010**

Co-Organizers:

Chuck Houser, SDAG Vice President  
SCS Engineers  
[CHouser@scsengineers.com](mailto:CHouser@scsengineers.com) (858) 571-5500 x244

Monte Murbach, SCGS President  
Murbach Geotech  
[mmurbach@aol.com](mailto:mmurbach@aol.com) (619) 222-2044

**SCOPE:** Papers addressing topics related to geology, structural geology, faulting, folding, meta-structures, biology, hydrogeology, paleontology, environmental issues, geography, Native American culture, and history of the Santa Rosa Mountains, Clark and Borrego Valleys, Borrego Badlands, Coyote Mountain, and San Ysidro Mountains.

**TIMELINE:** Email your papers to the co-editors as soon as possible:

- Finalized manuscripts due: September 15, 2010
- Target publication date: October 1, 2010



## Geologic One Stop Wonder (OSW) Field Trip


Last month Monte Murbach and Dave Schug coordinated a great OSW at East County's San Vicente Dam, where preparations were made into the bedrock for the dam to receive an additional 117 feet of concrete buttress. While the engineering and geologic aspects were fascinating, 2" to 3" of the entire surface of the face of the dam had been blasted off as part of the proposed dam raising, revealing the materials used during the dam's construction in 1943- chock-full Poway Clasts. Thanks go to our host Andrew Oleksyn of the Water Authority and geologist Mike Higgins of URS.



Left: dam and exposed foundation of east end of proposed buttress. SDAG membership for scale.

Right: Foundation of proposed west end of buttress, with "stairway" of roller compacted concrete over fractured granitic bedrock. Fractures were pressure-grouted, and weathered rock was blasted away for optimum building conditions.

## Wanted

I'm looking to buy past SDAG guidebooks, specifically any year pre-1988, '98, and '02. Contact Todd the Secretary at [todd@wirths.com](mailto:todd@wirths.com). 

## Grand Canyon Raft Trip, June 24 - July 1, 2011

Want to join your geo-pals on an eight-day Colorado River raft trip through the geological wonderland of Grand Canyon National Park? If there is enough interest, Sue Tanges will again organize a chartered raft trip for rock hounds, their families and friends. She will accompany us on the trip. This is the last time Sue will organize a chartered Grand Canyon raft trip!

The trip is tentatively scheduled for June 24 through July 1, 2011. The raft company will be Grand Canyon Expeditions Company of Kanab, Utah (<http://www.gcex.com/>). They have excellent river guides and the trip costs include the following:

- Round-trip transportation from Las Vegas, Nevada, to/from the river
- Sleeping bag, pad, ground cloth, and tent
- Waterproof river bags for sleeping gear and clothing

- Waterproof ammo box for camera and personal items
- All meals while on river, prepared with fresh meats and produce
- Utensils, cups, and plates
- Generous supply of soft drinks, juice, and a river-full of water
- Bring your own alcoholic beverages if desired
- Great fun and memorable experience (ask former river rats!!)

Two rafts are chartered and each will hold 14 passengers. We have space for 28 of us! Reservations will be on a first-come, first-serve basis. A waiting list for cancellations will be maintained. The price of the trip is not finalized but is likely about \$2,500. (There is a savings off the brochure price!)

To express your interest, email Sue at [grcynsue@att.net](mailto:grcynsue@att.net). Deposits will be required by September. More info will follow, if there is enough interest to fill the rafts! See you in the river in 2011!!!

---

### OTHER COOL MEETINGS:



South Coast Geological Society: 13 September 2010 (Monday): "Miocene Oblique Rifting of the San Diego Trough Region, California Continental Borderland" by Dr. Mark R. Legg, Legg Geophysical. Double Tree Club Hotel, Santa Ana. For more info go to <http://www.southcoastgeo.org/index.html>.

Inland Geological Society: 6 October 2010 (Wednesday): TBA, Dr. Elizabeth Cochran, UC Riverside. LSA Associates, 1500 Iowa Ave., Riverside. For more info go to <http://www.inlandgeo.org/>.



**FOR LEASE**  
1250 FAYETTE STREET  
EL CAJON, CA 92020

- Four units available, each with 3,125 square feet of warehouse and office space.
- Contact Terry Cochran at 619-258-4916, ext. 110 or to [tcochran@sunbeltpub.com](mailto:tcochran@sunbeltpub.com) for more information.

---

### FOR SALE

The following groundwater sampling equipment items are for sale. If interested, please contact Mrs. Jacqueline Sorben at (858) 278-8897:

1. Two manometer tubes (Fluid pressure-measuring device using liquid columns in vertical or inclined tubes. Used for concrete slab level surveys.)
2. Campbell Monoflex Pneumatic Integrated Vacuum Pressure Controller (designed to operate pumps and samplers to depths of 250 ft. with a maximum operating pressure of 125 PSI, with quick disconnect air fittings.)

3. Model 601 Standpipe Piezometer (designed to be placed within a drilled hole to provide a filtered inlet point.)

---

## **SEEKING JOB OPPORTUNITIES!**

**Brian J. Olson, PG, CEG:** Registered engineering geologist with 13+ years of experience in the geotechnical consulting business is seeking a new opportunity. Excellent in the office and even better in the field. Too many skills to list here. B.S. in Hydrologic Science/ Geology from UCSB, 1996. Detailed work experience, resume, and references available upon request. [brianjolson@att.net](mailto:brianjolson@att.net) (858) 750-9243.

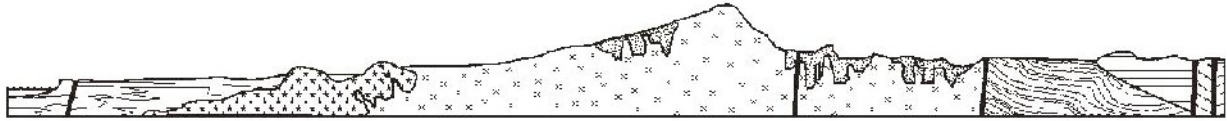
**Jared Warner:** I am a graduate of San Diego State where I received both my B.S. and M.S. in geological sciences ('06 and '09). I have experience in multiple fields including production geology, fractured reservoirs, reservoir characterization, basic geologic model building, geophysics, paleontology, sedimentology, oceanography, and teaching. I've recently moved back down to San Diego after working for Occidental Petroleum and looking for immediate employment opportunities. For information on my research, contact information, or a resume please feel free to contact me at [jared.j.warner@gmail.com](mailto:jared.j.warner@gmail.com) or call me at (858) 692-3789.

## **JOB OPENINGS!**

Sorry, none announced!

---





# SAN DIEGO ASSOCIATION OF GEOLOGISTS

[www.sandiegogeologists.org](http://www.sandiegogeologists.org)

## 2010 MEMBERSHIP FORM

NAME: \_\_\_\_\_

Please type or print clearly.

Home Address: \_\_\_\_\_

\_\_\_\_\_

\_\_\_\_\_

Work Address: \_\_\_\_\_

\_\_\_\_\_

\_\_\_\_\_

*Please include company or other affiliation*

E-mail Address: \_\_\_\_\_

Website: \_\_\_\_\_

Field(s) of Interest: \_\_\_\_\_

\_\_\_\_\_

Phone: Home: (    ) \_\_\_\_\_ Work: (    ) \_\_\_\_\_ Cell: (    ) \_\_\_\_\_

**NOTE:** *Your membership dues include email delivery of the monthly newsletter.*

Dues:            \_\_\_ Student Member (email delivery only)            \$ 5.00

(check choice)

                  \_\_\_ Regular Member (email delivery only)            \$ 25.00

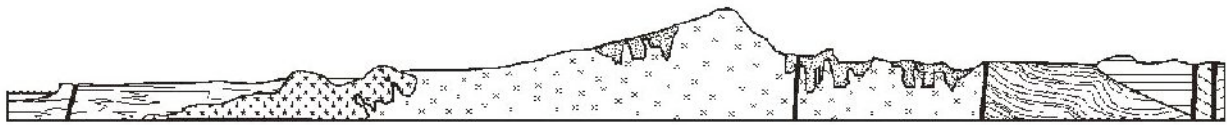
New Member             Continuing Member

Date: \_\_\_\_\_

Check for change of E-mail address:

**Please enclose a check payable to SDAG, and mail to:**

San Diego Association of Geologists  
PMB 157  
5694 Mission Center Road, Suite 602  
San Diego, CA 92108



# SAN DIEGO ASSOCIATION OF GEOLOGISTS

## 2010 SPONSORSHIP FORM

**NAME:** \_\_\_\_\_  
(as you would like it to appear in guidebook and website)

Please type or print clearly, and check  preferred mailing address below.

**Residential Address:** \_\_\_\_\_  
 \_\_\_\_\_

**Office/School Address:** \_\_\_\_\_  
 \_\_\_\_\_  
\_\_\_\_\_

**Website:** \_\_\_\_\_

**Phone:** Home: (\_\_\_\_) \_\_\_\_\_ Office: (\_\_\_\_) \_\_\_\_\_

**Fax:** (\_\_\_\_) \_\_\_\_\_ **e-mail:** \_\_\_\_\_

**Donation Level and Consideration:** \_\_\_\_\_ **Sponsor \$ 100.00**  
(In addition to monthly recognition for your contribution, you are entitled to a free Internet "link" from SDAG Website. We also list all Sponsors in any publications printed this year)

\_\_\_\_\_ **Corporate Sponsor \$ 500.00**  
(In addition to the above, you are entitled to an image of your business card in the monthly newsletter and SDAG Website)

\_\_\_\_\_ **Patron \$1,000.00**  
(In addition to the above, you will receive a commemorative plaque in recognition for your most generous support of the organization)

New Member / Donor  Continuing Member

Date: \_\_\_\_\_ Check for change of mailing address:

Please make check payable to San Diego Geological Society, Inc., a 501(c)3 public benefit nonprofit educational corporation (in order to claim a tax deduction), and mail to:

San Diego Geological Society, Inc.  
3130 North Evergreen St.  
San Diego, California 92110

*Donations may also be made  
at monthly meetings.  
Thank you!*