

# SAN DIEGO ASSOCIATION OF GEOLOGISTS

[www.sandiegogeologists.org](http://www.sandiegogeologists.org)

## SDAG MEETING ANNOUNCEMENT

Note: Meeting is on the 4<sup>th</sup> Wednesday This Month!

WEDNESDAY, AUGUST 25<sup>TH</sup>, 2010

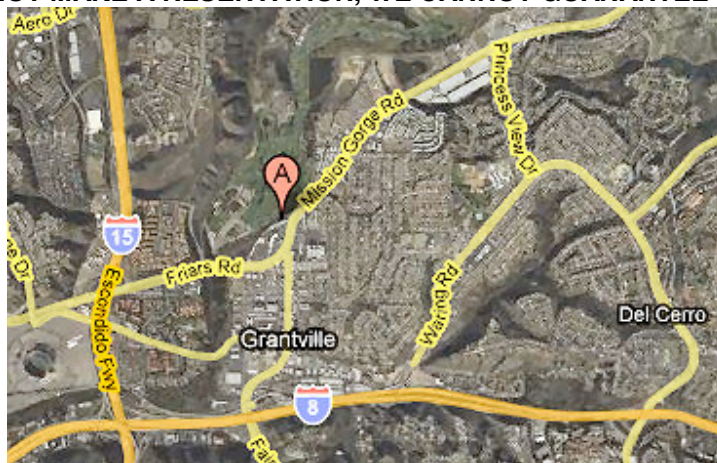
### *“Mount Soledad Landslide”*

*Presented by*

Rob Hawk, City of San Diego

- Where:** **Emiliano’s Mexican Restaurant** (Overlooking Admiral Baker Golf Course)  
6690 Mission Gorge Road, San Diego, CA 92120  
(619) 284-2460
- When:** 5:30 pm – Social Hour  
6:30 pm – Dinner  
7:15 pm – Program
- Dinner:** Mexicano fantastico. Beverage station. Cash bar.
- Cost:** \$30 per person, \$5 discount for members, STUDENTS: \$20. Add \$5 if you did not make a reservation
- Reservations:** Make your reservation **online** at [www.sandiegogeologists.org](http://www.sandiegogeologists.org) **no later than noon, Monday, August 23<sup>rd</sup>**.

**RESERVATIONS CANNOT BE ACCEPTED AFTER MONDAY AT 12 NOON.  
IF YOU DO NOT MAKE A RESERVATION, WE CANNOT GUARANTEE YOU A MEAL.**



## 2010 SDAG MEETING SCHEDULE - Mark your Calendars!

Meetings are usually on the 3<sup>rd</sup> Wednesday of the month but may change to accommodate speaker and meeting place schedules. Check here for updates!

September 15	<b>Candace Kohl:</b> Meteorites
October	<b>TBA</b>
November 17	<b>TBA</b>

### 2010 EXECUTIVE COMMITTEE

**PRESIDENT** – Bryan Miller-Hicks; *Cuyamaca College*; Ph: (619) 733-3724; [geobry@aol.com](mailto:geobry@aol.com) ; [bryanmillerhicks@gmail.com](mailto:bryanmillerhicks@gmail.com)

**VICE PRESIDENT** – Chuck Houser; *SCS Engineers*; Ph: (858) 571-5500; [CHouser@scsengineers.com](mailto:CHouser@scsengineers.com)

**SECRETARY** – Todd Wirths; Ph: (858) 337-0098; [todd@wirths.com](mailto:todd@wirths.com)

**TREASURER** – Cari Gomes; [sdagtreas@sandiegogeologists.org](mailto:sdagtreas@sandiegogeologists.org)

**PUBLICATIONS** – Lowell Lindsay; *Sunbelt Publications*; Ph: (619) 258-4911 x111; fax:(619) 258-4916; [llindsay@sunbeltpub.com](mailto:llindsay@sunbeltpub.com)

**WEBMASTER** – Carolyn Glockhoff; *Caro-Lion Enterprises*, Ph: (858) 549-3396; [carolyn@caro-lion.com](mailto:carolyn@caro-lion.com)

### SPEAKER BIO

#### Robert Hawk

Robert N. Hawk, PE, was a Senior Engineering Geologist and Deputy City Engineer with the City of San Diego until his retirement in 2009, and continues to provide services as needed as a provisional employee. Mr. Hawk earned a Bs and MSc in engineering geology and hydrogeology from SDSU, and is licensed in Geology, Engineering Geology, Hydrogeology, and Civil Engineering. He is currently a Principal Geologist with TerraCosta Geotechnical Consultants in San Diego.

### SPEAKER ABSTRACT

#### "Mount Soledad Landslide"

At approximately 9 AM on Wednesday, October 3, 2007, a landslide destroyed two roads and 5 homes, damaged 5 more, and rendered approximately 180 homes uninhabitable in approximately 10 minutes. The events leading up to the catastrophic failure began with a late Pleistocene/early Holocene landslide which was unrecognized until 1961 when a large failure occurred during residential development. Despite subsequent remediation of the 1961 landslide using typical grading techniques in the 1960's, another portion failed in 2007. Stabilization and repairs to the roads were effected using cast-in-drill-hole shear pins. The details of the landslide discovery, resident notification, and repair underscored issues for geologists and geotechnical engineers unique to urban landslides and illustrate the changes in geotechnical practice over the last 50 years.

## PRESIDENTS CORNER, AUGUST 2010

It is mid August (already!) and some of us have kids going back to school, will be attending classes ourselves, or.....will be teaching. My teaching experience at Cuyamaca college has taught ME many things....chief among them, I think, is how valuable it is to be passing on our knowledge and our love of geology and earth sciences to the younger generation. Or to those who have accumulated more wisdom and experience that comes with umm.....growing older and still want to learn and learn more.

It also appears to me that education in general in our great country is a bit fragile, and somewhat besieged. I have read posts on professional education websites about how some schools are dropping or drastically cutting back their earth sciences curricula; due to funding problems, of course, but also through low interest, as students pursue careers which may gain them higher salaries in a shorter amount of time. If true (and I am reporting anecdotes, I have not yet seen hard data), we, as professional geologists and earth scientists, might take note of this.

Teachers, of course, are in a good position to hopefully spark and maintain interest in geology, provided our classes are still being offered! Those who are not teachers, well, there are a number of volunteer activities where professionals are welcome to tell their geo-stories (realistically or with as many embellishments as you want, your choice!). Check your local papers, magazines, libraries, volunteer information when you travel.

As I was strolling on the shoreline at Pismo Beach last week, I heard a young girl remark as she was scrambling over the faulted and fascinating sandstones of the cliffs.. "Why are all these rocks so many colors, I don't get it!" Trust me, I had to bite my tongue as I didn't want her parents to chase off some weird old guy who was trying to explain. Anyway, you all get the idea! Let's keep the spark of learning about geology and earth sciences alive, in whatever way we can.

SDAG and SDGS, for our part, award scholarships to worthy students every year. This year, Ms. Megan Kolupski of USD is our recipient. Further, we are embarking on an effort to apply for and obtain research grants from NSF and other organizations, for student research, and perhaps also for field trip support.

Cheers, all, see you at Emiliano's

**Bryan**

## 2009 and 2010 SPONSORS - THANK YOU!!

Note the new nomenclature for 2010: Sponsors, Corporate Sponsors, and Patrons provide a significant portion of SDGS's and SDAG's operating and scholarship budgets. By making your payments to SDGS (a 501(c)3 public benefit nonprofit educational corporation) you may be able to claim a tax deduction. In addition to monthly recognition for your contribution, you are entitled to additional benefits as listed on the Sponsorship Form included in this newsletter.



## Corporate Sponsor

[H&P Mobile GeoChemistry, Inc.](#) is an industry leading provider of environmental lab services. With ten mobile labs and five direct push sampling trucks and unparalleled experience, H&P's repertoire of environmental lab services includes many forms of environmental lab sampling techniques all the way to on site field analysis services. H&P has successfully and accurately performed environmental lab services delivering quality results to our clients for over sixteen years.

2470 Impala Dr., Carlsbad, CA 92010  
(800) 834-9888

<a href="#">Dr. Pat Abbott, SDSU (Emeritus)</a>	Joe Coronas, SDSU Geo-Alumni Assn.
Tod Clark - <a href="#">Pacific Drilling Co.</a>	Phil Farquharson, <a href="#">CG-Squared Productions</a>
<a href="#">Carolyn Glockhoff</a> , Caro-Lion Enterprises	Lowell Lindsay, <a href="#">Sunbelt Publications</a>
Monte and Diane Murbach, <a href="#">Murbach Geotech</a>	David and Jan Steller ("two-fer" - thanks!)
Carole L. Ziegler	<a href="#">Sherry Bloom</a> , Coldwell Banker Real Estate
David Bloom	<a href="#">Dr. Monte Marshall</a> , SDSU Prof. of Geology and Geophysics, Emeritus
George Copenhaver, PG, CEG	Sue Tanges, Southland Geotechnical Consultants
Susan Booth	<a href="#">Dr. Sarah Gray - University of San Diego</a>
<a href="#">Amec Earth &amp; Environmental</a>	<a href="#">Geocon</a> , Inc.
Jim Ashby & Eric Hendrix - <a href="#">Mission Geoscience, Inc.</a>	Dr. Margaret Eggers <a href="#">Eggers Environmental, Inc.</a>
<a href="#">Dr. Richard Berry</a> , SDSU (Emeritus)	<a href="#">Ninyo &amp; Moore</a>
William J. Elliott, Engineering Geologist	<a href="#">Mike Palmer</a>
<a href="#">Hargis and Associates, Inc.</a>	<a href="#">Dr. Anne Sturz</a>
Greg Cranham	<a href="#">Southwest Geophysics, Inc.</a>

## ANNOUNCEMENTS

**Call for Papers** for the Upcoming 2010 SDAG/SCGS Joint Field Guide:

***"Geology of the Northern Anza Borrego Desert State Park Area"***

To be published in association with this years' SDAG/SCGS Joint field trip:

***"The Lows and Highs of Anza Borrego Desert State Park"***

**October 15 through 17, 2010**

Co-Organizers:

Chuck Houser, SDAG Vice President  
SCS Engineers  
[CHouser@scsengineers.com](mailto:CHouser@scsengineers.com) (858) 571-5500 x244

Monte Murbach, SCGS President  
Murbach Geotech  
[mmurbach@aol.com](mailto:mmurbach@aol.com) (619) 222-2044

**SCOPE:** Papers addressing topics related to geology, structural geology, faulting, folding, meta-structures, biology, hydrogeology, paleontology, environmental issues, geophagy, Native American

culture, and history of the Santa Rosa Mountains, Clark and Borrego Valleys, Borrego Badlands, Coyote Mountain, and San Ysidro Mountains.

**TIMELINE:** Email a statement of interest & topic to the co-editors as soon as possible:

- Manuscripts due: August 31, 2010
- Revised manuscripts due: September 15, 2010
- Target publication date: October 1, 2010

---

### THE OCTOBER/NOVEMBER 2011 SDAG FIELD TRIP

The 2011 SDAG field trip to the eastern Imperial County region is underway already. Work completed by several SDSU undergrad and graduate students in the Picacho Area has been completed and is being considered for inclusion in the guidebook. Please contact next year's SDAG vice president Todd Wirths at 858-337-0098 or [todd@wirths.com](mailto:todd@wirths.com) for ideas, papers, people, places, etc.

---

### Geologic One Stop Wonder (OSW) Field Trip Announcement

**Where:** San Vicente Dam Construction Site. This is a unique chance to see the foundation excavation during ongoing construction of the Raised San Vicente Dam, in Lakeside. The existing concrete dam will be raised an additional 117 feet with a buttress constructed of Roller Compacted Concrete to increase reservoir storage. The current construction phase has completed the excavation in granitic and metavolcanic rock for the raised dam. We will visit this excavation and see several other project features. Andrew Oleksyn of the Water Authority will be our host. Mike Higgins of URS will discuss dam foundation geology based on his mapping. (Dave Schug is helping to coordinate this - thanks Dave!)

**When:** Friday, August 20, 2010, 1 to 4 PM

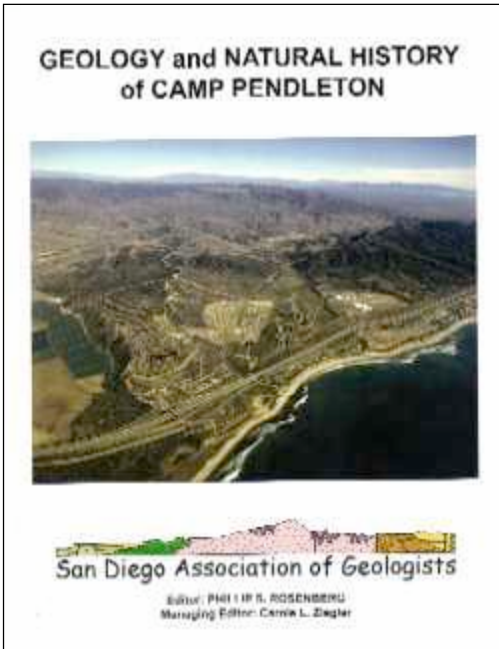
**Details:** Trip is limited to 20 geologists. (Due to the nature of the site, this trip is limited to geologists only.) Car pool if possible, we will drive short distances to several areas near the dam in personal vehicles. So let's carpool to get there and then once there, we will consolidate once again. Expect to be walking on sloping, uneven ground. Weather will be hot; please bring water. Long pants, sturdy boots, safety vest, hard hat and safety glasses **required**. At one location, there is an inclined, 20-foot long ladder to use to get down to the dam foundation excavation. If people want to stand on the foundation, they will need to use the ladder. However, they can still view the excavation from the top of the slope, if not comfortable on a ladder.

**To Sign Up:** Please email Monte Murbach at [mmurbach@aol.com](mailto:mmurbach@aol.com) or call him on his cell at 619-865-4949 to reserve. As previously indicated, we are limited to 20 geologists. Please contact Monte to reserve your spot! A meeting location map will be emailed to you once you are on the list. Monte Murbach, Past SDAG President (2004).

---

## New SDAG/Sunbelt Publication:

### **GEOLOGY AND NATURAL HISTORY OF CAMP PENDLETON, 2<sup>nd</sup> EDITION**



GEOLOGY and NATURAL HISTORY of Marine Corps Base CAMP PENDLETON SAN DIEGO COUNTY, CALIFORNIA: This guidebook includes the San Diego Association of Geologists' 1994 field trip through Camp Pendleton. Marine Corps Base Camp Pendleton covers an area of approximately 200 square miles, extending from the Pacific Ocean to the crest of the Santa Margarita Mountains and serves as a buffer zone between the populous metropolitan areas of Los Angeles and San Diego. The base contains some of the last virgin lands in coastal southern California, lands that are undoubtedly the last vestiges of what California must have been like during the days of the Spanish land grants. Due to its popularity, this guidebook warranted a second edition. The original 1994 road log of the field trip is included along with the papers printed in the original edition. However, material has been updated as new information has been learned about the area and the

original Geologic Map of the San Onofre Mountains has been redrafted to meet today's mapping standards. This map is included as a fold out map at the end of the guidebook. Learn about the endangered avian species of Camp Pendleton at the coast to threatened species at the interior. Other papers included in this guidebook tell the human history of Camp Pendleton along with its geologic environment. The fire history of organic fragments, water resources and pollution prevention are also explored. Go to <http://www.sunbeltbook.com/BookDetails.asp?id=250> and buy it.

## Grand Canyon Raft Trip, June 24 - July 1, 2011

Want to join your geo-pals on an eight-day Colorado River raft trip through the geological wonderland of Grand Canyon National Park? If there is enough interest, Sue Tanges will again organize a chartered raft trip for rock hounds, their families and friends. She will accompany us on the trip. This is the last time Sue will organize a chartered Grand Canyon raft trip!



The trip is tentatively scheduled for June 24 through July 1, 2011. The raft company will be Grand Canyon Expeditions Company of Kanab, Utah (<http://www.gcex.com/>). They have excellent river guides and the trip costs include the following:

- Round-trip transportation from Las Vegas, Nevada, to/from the river
- Sleeping bag, pad, ground cloth, and tent

- Waterproof river bags for sleeping gear and clothing
- Waterproof ammo box for camera and personal items
- All meals while on river, prepared with fresh meats and produce
- Utensils, cups, and plates
- Generous supply of soft drinks, juice, and a river-full of water
- Bring your own alcoholic beverages if desired
- Great fun and memorable experience (ask former river rats!!)

Two rafts are chartered and each will hold 14 passengers. We have space for 28 of us! Reservations will be on a first-come, first-serve basis. A waiting list for cancellations will be maintained. The price of the trip is not finalized but is likely about \$2,500. (There is a savings off the brochure price!)

To express your interest, email Sue at [grcynsue@att.net](mailto:grcynsue@att.net). Deposits will be required by September. More info will follow, if there is enough interest to fill the rafts! See you in the river in 2011!!!

**OTHER MEETINGS:**

AEG-Inland Empire, Southern California Section: 18 August 2010 (Wednesday): "Soil Gas Surveys - Do's and Don'ts, Myths and Truths." Anthony Severini, Environmental Support Technologies (EST), Irvine. Sizzler Restaurant, Temecula, 5-9 PM. For more info go to <http://www.aegsc.org/chapters/inlandempire/>.



**FOR LEASE**  
 1250 FAYETTE STREET  
 EL CAJON, CA 92020

- Four units available, each with 3,125 square feet of warehouse and office space.
- Contact Terry Cochran at 619-258-4916, ext. 110 or to [tcochran@sunbeltpub.com](mailto:tcochran@sunbeltpub.com) for more information.

**FOR SALE**

The following groundwater sampling equipment items are for sale. If interested, please contact Mrs. Jacqueline Sorben at (858) 278-8897:

1. Two manometer tubes (Fluid pressure-measuring device using liquid columns in vertical or inclined tubes. Used for groundwater head pressure.)
2. Campbell Monoflex Pneumatic Integrated Vacuum Pressure Controller (designed to operate pumps and samplers to depths of 250 ft. with a maximum operating pressure of 125 PSI, with quick disconnect air fittings.)
3. Model 601 Standpipe Piezometer (designed to be placed within a drilled hole to provide a filtered inlet point.)

## SEEKING JOB OPPORTUNITIES!

**Jared Warner:** I am a graduate of San Diego State where I received both my B.S. and M.S. in geological sciences ('06 and '09). I have experience in multiple fields including production geology, fractured reservoirs, reservoir characterization, basic geologic model building, geophysics, paleontology, sedimentology, oceanography, and teaching. I've recently moved back down to San Diego after working for Occidental Petroleum and looking for immediate employment opportunities. For information on my research, contact information, or a resume please feel free to contact me at [jared.j.warner@gmail.com](mailto:jared.j.warner@gmail.com) or call me at (858) 692-3789.

## JOB OPENINGS!

**Senior Geologist:** Peter Shah, a corporate recruiter working closely with a client in Montreal, QC, has an immediate need for a Senior Geologist with the following experience:

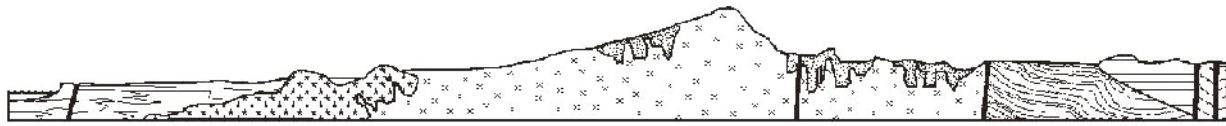
- B. Eng. in Geological Engineering or B. Sc. in Geology
- 15 years or more of experience in consulting, exploration or operating mines
- Experience in technical writing of NI 43-101 and JORC reports
- Expertise or good knowledge of Geo-statistics
- Available to travel within Canada, US and overseas
- Strong communication and leadership skills (bilingual English/French an asset)

Thanking you in advance and wishing you much happiness.

Pete Shah  
Senior Talent Acquisition Specialist  
FEP Search Group  
T: 847-515-9377 Ext. 181  
T: 416-979-7575 Ext. 181  
F: 416-979-3030  
E: [pete@fepsearchgroup.com](mailto:pete@fepsearchgroup.com)







# SAN DIEGO ASSOCIATION OF GEOLOGISTS

[www.sandiegogeologists.org](http://www.sandiegogeologists.org)

## 2010 MEMBERSHIP FORM

NAME: \_\_\_\_\_

Please type or print clearly.

Home Address: \_\_\_\_\_

\_\_\_\_\_

\_\_\_\_\_

Work Address: \_\_\_\_\_

\_\_\_\_\_

\_\_\_\_\_

*Please include company or other affiliation*

E-mail Address: \_\_\_\_\_

Website: \_\_\_\_\_

Field(s) of Interest: \_\_\_\_\_

\_\_\_\_\_

Phone: Home: (\_\_\_\_) \_\_\_\_\_ Work: (\_\_\_\_) \_\_\_\_\_ Cell: (\_\_\_\_) \_\_\_\_\_

**NOTE:** *Your membership dues include email delivery of the monthly newsletter.*

Dues: \_\_\_\_\_ Student Member (email delivery only) \$ 5.00

(check choice)

\_\_\_\_\_ Regular Member (email delivery only) \$ 25.00

New Member  Continuing Member

Date: \_\_\_\_\_

Check for change of E-mail address:

Please enclose a check payable to SDAG, and mail to:

San Diego Association of Geologists  
PMB 157  
5694 Mission Center Road, Suite 602  
San Diego, CA 92108



# SAN DIEGO ASSOCIATION OF GEOLOGISTS

## 2010 SPONSORSHIP FORM

**NAME:** \_\_\_\_\_  
(as you would like it to appear in guidebook and website)

Please type or print clearly, and check  preferred mailing address below.

**Residential Address:** \_\_\_\_\_  
 \_\_\_\_\_

**Office/School Address:** \_\_\_\_\_  
 \_\_\_\_\_  
\_\_\_\_\_

**Website:** \_\_\_\_\_

**Phone:** Home: ( ) \_\_\_\_\_ Office: ( ) \_\_\_\_\_

**Fax:** ( ) \_\_\_\_\_ **e-mail:** \_\_\_\_\_

**Donation Level and Consideration:** \_\_\_\_\_ **Sponsor \$ 100.00**  
(In addition to monthly recognition for your contribution, you are entitled to a free Internet "link" from SDAG Website. We also list all Sponsors in any publications printed this year)

\_\_\_\_\_ **Corporate Sponsor \$ 500.00**  
(In addition to the above, you are entitled to an image of your business card in the monthly newsletter and SDAG Website)

\_\_\_\_\_ **Patron \$1,000.00**  
(In addition to the above, you will receive a commemorative plaque in recognition for your most generous support of the organization)

New Member / Donor  Continuing Member

Date: \_\_\_\_\_ Check for change of mailing address:

Please make check payable to San Diego Geological Society, Inc., a 501(c)3 public benefit nonprofit educational corporation (in order to claim a tax deduction), and mail to:

San Diego Geological Society, Inc.  
3130 North Evergreen St.  
San Diego, California 92110

*Donations may also be made  
at monthly meetings.  
Thank you!*