

# SAN DIEGO ASSOCIATION OF GEOLOGISTS

[www.sandiegogeologists.org](http://www.sandiegogeologists.org)

---

## SDAG MEETING ANNOUNCEMENT

TUESDAY, DECEMBER 16<sup>TH</sup>, 2008

### *TRANSITIONAL FOSSILS AT THE BASE OF THE ADAPTIVE RADIATION OF BALEEN WHALES—EVIDENCE FROM THE OLIGOCENE OF OREGON AND CLUES FROM RECENT EMBRYOS*

*Presented by*

**Tom Demere, Ph.D., SAN DIEGO NATURAL HISTORY MUSEUM**

**Where:** San Diego Natural History Museum  
1788 El Prado, Balboa Park  
San Diego, CA 92112  
619-232-3821

**When:** 5:30 pm – Social Hour  
6:30 pm – Dinner  
7:45 pm – Program

**Directions:** Located in Balboa Park, the SDNHM is near the intersection of Park Boulevard and Village Place, just south of the San Diego Zoo. Enter through the grand entrance on the north side, facing the large Morton Bay Fig tree

**Dinner:**

***Catered by Festivities Express:*** Meat and Veggie Lasagna Buffet, Tossed Green Salad,  
Bread Sticks, Cookies  
(Includes Beer, Wine and Soft Drinks)

**Cost:** \$30 per person, \$5 discount for members, STUDENTS: \$20. Add \$5 if you did not make a reservation

**Reservations:** Make your reservation online at [www.sandiegogeologists.org](http://www.sandiegogeologists.org) no later than noon, ***Monday, December 15<sup>th</sup>***.

**RESERVATIONS CANNOT BE ACCEPTED AFTER MONDAY AT 12 NOON.**

**IF YOU DO NOT MAKE A RESERVATION, WE CANNOT GUARANTEE YOU A MEAL.**

---

---

## 2008 EXECUTIVE COMMITTEE

**PRESIDENT** - Sarah Gray; *University of San Diego*, Ph: (619) 260-4098; fax: (619)260-6874; [sgray@sandiego.edu](mailto:sgray@sandiego.edu)

**VICE PRESIDENT**- Scott Snyder; *Ninyo & Moore*; Ph: (858) 576-1000; [sdag2006@prodigy.net](mailto:sdag2006@prodigy.net)

**SECRETARY** – Bryan Miller-Hicks; [geobry@aol.com](mailto:geobry@aol.com); [bryanmillerhicks@gmail.com](mailto:bryanmillerhicks@gmail.com)

**TREASURER** - Chuck Houser; *PetraGeotechnical Inc.*; Ph: (858) 485-5530; [chouser@petra-inc.com](mailto:chouser@petra-inc.com)

**PUBLICATIONS**-Lowell Lindsay; *Sunbelt Publications*; Ph: (619)258-4911 x111; fax:(619)258-4916; [llindsay@sunbeltpub.com](mailto:llindsay@sunbeltpub.com)

**WEBMASTER** – Carolyn Glockhoff; *Caro-Lion Enterprises*, Ph: (858) 549-3396; [carolyn@caro-lion.com](mailto:carolyn@caro-lion.com)

## SPEAKER BIO

### THOMAS A. DEMÉRÉ, PH.D.

Tom attended San Diego State University (B.S. Geology), Univ. So. Calif. (M.S. Geology) and UCLA (Ph.D. Biology). After an initial period working in the petroleum industry, Tom moved to the San Diego Natural History Museum where he has been employed since 1979. He is currently Curator of the Department of Paleontology, where he occupies the Joshua L. Baily, Jr. Chair of Paleontology.

Tom's research interests are in Cenozoic paleontology and geology of southern California and northern Baja California. His invertebrate paleontological work has concentrated on Plio-Pleistocene molluscan biostratigraphy, paleoecology, and taphonomy. His vertebrate paleontological work focuses on the evolutionary history of marine mammals (pinnipeds and cetaceans). In pursuing this line of research, Tom is involved with field investigations to discover new fossil remains of pinnipeds and cetaceans, with anatomical investigations of both fossil and Recent marine mammals, and with functional analysis of feeding and locomotor anatomical features.

Since the mid-1980s, Tom has been deeply involved with conservation of the rich and unique paleontological resources of San Diego County. In this regard, he has helped put together guidelines for determining the paleontological resource sensitivity of the different geological deposits that occur in the county. Tom has also headed up the Museum's Department of PaleoServices, which seeks to mitigate negative construction-related impacts to sensitive paleontological resources. Typically, mitigation involves monitoring of construction activities, discovery and salvaged of unearthened fossil remains, preparation of salvaged fossils, identification and curation of prepared fossils, and storage of curated fossils in perpetuity for future generations. To date, this effort has resulted in the recovery of countless rare and/or unique fossil remains, many of which are, or have been, displayed for the public at the Museum.

## ABSTRACT

### **“Slugs, sloths, and silts: Sea level oscillations and paleontology in a northern San Diego County Pleistocene embayment”**

Although modern baleen whales include the largest living mammals, they feed on small and even tiny prey in bulk. This feat is accomplished through use of an oral sieve that allows for filter-feeding. The major components of this oral sieve include a large head/mouth, loosely sutured skull bones, a mobile chin, and baleen. Baleen is a novel keratinous tissue that develops from the skin of the palate and is typically arranged in a series of flexible plates.

Living baleen whales bulk feed with their oral sieve and lack teeth as adults. However, a fetal dentition does develop but is lost prior to birth. Molecular studies show that although enamel specific genes are preserved in the genetic code of living baleen whales, these genes are non-functional and represent “molecular fossils.” Thus, modern baleen whales preserve developmental and genetic evidence of a toothed ancestry.

The cetacean fossil record (Oligocene to Pleistocene) includes well-preserved specimens of toothless baleen whales and although baleen rarely fossilizes, certain bony landmarks are preserved that serve as indirect evidence of baleen. As a result, the occurrence of toothless, baleen-bearing whales can be traced back into the late Oligocene. Interestingly, there are also late Oligocene baleen whales that possessed a functional adult dentition. These fossils are generally considered to have lacked baleen. However, the discovery of bony structures on the palates of several of these tooth-bearing fossil whales suggests an alternative hypothesis involving a stepwise transition from a toothed ancestor, to a mosaic intermediate with both teeth and baleen, to modern baleen whales that lack an adult dentition but retain genetic and developmental evidence of their toothed heritage.

---

---

### PRESIDENTS CORNER, DECEMBER 2008

It's the time of the year when we get to share holiday cheer together again and hear about the latest and greatest fossil finds from the San Diego Natural History Museum. Don't miss our annual holiday meeting on Tuesday, December 16<sup>th</sup> when our own Tom Demere, paleontology curator at the SDNHM will present *“Slugs, sloths, and silts: Sea level oscillations and paleontology in a northern San Diego County Pleistocene embayment”*. This is a great opportunity to invite friends and guests to see the latest museum displays and meet all of your crazy geology friends.

There have been some exciting developments over the past month. Dave Bloom and our SDAG Steering Committee have made important progress towards establishing a larger non-profit organizational framework that will allow SDAG to expand its educational & community outreach and publishing activities. Thanks Dave and the Steering Committee.

Bryan Miller-Hicks, Monte Marshall, Brad Erskine and the field trip organization committee have chosen a date, theme, and location for the 2009 SDAG annual field trip. Monte Marshall and Brad Erskine will lead us through Deep Canyon, a natural preserve in the Santa Rosa Mountains (which is not open to the public) to discuss tectonics, mylonites and everything else. This should be a great one so mark your calendars for the weekend of November 8<sup>th</sup> and 9<sup>th</sup>, 2009.

This is also the time of year when you should start thinking about getting more involved in SDAG. If you'd like to run for secretary of SDAG, please email or call me. It's a lot of fun.

Also, keep those ideas coming for One Stop Wonders.

It's hard to believe that I'll soon become a "past president" of SDAG. I'd like to thank all of you for the opportunity to get involved in such a fantastic organization. Its been a rewarding experience that I couldn't have done without the help of so many of you including: Phil Farquharson, Dave Bloom, Lowell Lindsay, Margaret Eggers, Scott Snyder, Bryan Miller-Hicks, Chuck Houser, Monte and Diane Murbach and many others.

Happy holidays everyone!

--Sarah

---

---

---

---

---

---

---

---

## ANNOUNCEMENTS

### **Rocks with Provenance Needed for a Reference Collection for Typing and Sourcing San Diego Co. Artifacts**

The San Diego Archaeological Center and local archaeologists need a county-wide reference collection of local rocks from outcrops. The collection will be an important resource for archaeologists involved in typing and sourcing stone artifacts from the San Diego area.

Norrie Robbins, adjunct faculty in the Dept. of Geological Sciences at SDSU, is spearheading this volunteer effort. She notes that geologists use a much wider variety of descriptors for rocks than do archaeologists. One of the objectives of this project is to cross-reference archaeological categories with geological ones to help develop a mutually understandable terminology and to improve sourcing. Rock specimens in the reference collection will be identified by spatial coordinates and both geological and archaeological descriptors.

Please contact Norrie ([nrobbins@geology.sdsu.edu](mailto:nrobbins@geology.sdsu.edu), 619-303-9095) with any questions and to arrange pick up of specimens. Specimens may also be placed in her mailbox at SDSU or dropped off at the Center (please indicate Attention: Rebecca Nathan). In addition, Dr. Robbins or Dr. Tim Gross will be available at most meetings of the San Diego County Archaeological Society (SDCAS) and San Diego Association of Geologists (SDAG) to accept specimens. Building the reference collection is a long-term project. There is no time limit for making your contributions.

---

---

## 2008 CORPORATE SPONSORS - THANK YOU!!

Corporate sponsors provide a significant portion of SDAG's operating and scholarship budget. In addition to monthly recognition for your contribution, you are entitled to a free Internet "link" from [SDAG's Website](#). We also list Corporate Sponsors in our annual SDAG Field Trip Volume. **Please consider SDAG sponsorship in 2009!**

<a href="#">Dr. Richard Berry</a>	<a href="#">Geocon, Inc.</a>
<a href="#">H&amp;P Mobile Geochemistry</a>	<a href="#">Dr. Sarah Gray - University of San Diego</a>
<a href="#">Sherry Bloom</a> , Coldwell Banker Real Estate	David Bloom - <a href="#">General Dynamics Information Technology</a>
Joe Coronas, <a href="#">City of San Diego</a>	Lowell Lindsay, <a href="#">Sunbelt Publications</a>
Dr. Margaret Eggers <a href="#">Eggers Environmental, Inc.</a>	Phil Farquharson, <a href="#">CG-Squared Productions</a>
Sue Tanges, Southland Geotechnical	<a href="#">Julie Moore, SPL Laboratories</a>
William J. Elliott, Engineering Geologist	<a href="#">Ninyo &amp; Moore</a>
<a href="#">Dr. Monte Marshall</a>	<a href="#">Dr. Anne Sturz</a>
<a href="#">Anderson Drilling</a>	<a href="#">GeoSoils, Inc.</a>
Katherine Freese	David and Jan Steller
<a href="#">Geo-tech Imagery</a> , Woodrow Higdon	Carole L. Ziegler
Pacific Drilling Co.	
<a href="#">Carolyn Glockhoff</a> , Caro-Lion Enterprises	Monte and Diane Murbach
<a href="#">Southwest Geophysics, Inc.</a>	Jim Ashby & Eric Hendrix - <a href="#">Mission Geoscience, Inc.</a>
<a href="#">Pat Brooks</a>	
<a href="#">Mike Palmer</a>	<a href="#">Hargis and Associates, Inc.</a>

## JOB OPENINGS!

### CA ~ Coast ~ Geologist ~ **Independent Energy Company**

Select candidates are being sought for this unique opportunity with an independent energy company. Qualified candidates will possess:

- Bachelors or Masters of Science in Geology.
- 1 to 15 years experience in oil and gas exploration and production.
- Experience with Microsoft Office software.
- Extensive knowledge of current 2D and/or 3D mapping techniques and industry software such as Geographix.

The incumbent will:

- Be responsible for generating exploitation and exploration opportunities by providing geologic/geophysical support to interdisciplinary teams in the development and operation of company owned assets.
- Evaluate data from well logs, cores, well cuttings, and seismic surveys to develop subsurface maps (e.g. structure, formation thickness, net sand, and HCPV) and cross-sections of potential and/or proven productive geologic horizons.
- Analyze and interpret the regional structural and stratigraphic relations, including published regional geologic and offset field studies, for an assigned area providing interpretations that allow the complete evaluation of upside potential.

- Estimate oil and/or gas reserves in proven or prospective fields, recommend development of operated properties and/or joint venture endeavors and consult with Petroleum Engineers concerning drilling and production methods.
- During drilling operations, work closely with onsite mud logger to identify formation tops and presence of potentially productive zones from shows and from these indicators, provide information to allow determination of well TD.
- Coordinate technical projects with Geophysicists, Engineers, Geologic Technicians and other support staff.

The selected candidate will enjoy a comprehensive remuneration/benefits package structured in line with their background and ability to contribute. This is truly an exceptional opportunity for an exceptional professional.

For immediate and confidential consideration, time is of the essence, qualified candidates are encouraged to submit a current resume to:

Larry V. Combs, Esq.  
4450 California Ave., #319  
Bakersfield, CA 93309-1152  
Phone: 661-831-0149

PREFERRED SUBMISSION METHOD:

Email: [Lcombs@Search4um.com](mailto:Lcombs@Search4um.com)

## **PART-TIME GEOLOGY/EARTH SCIENCE INSTRUCTORS, PALOMAR COLLEGE**

Beginning with the Spring, 2009 semester, the Earth, Space & Aviation Sciences Department at **Palomar College** will have several openings for part-time instructors in Physical Geology, Historical Geology and Introductory Earth Sciences. Most of the course offerings will be in the evenings or late afternoons or on Fridays.

Applicants should have a Master's Degree in Geology or a closely related field. Persons who are nearing completion of their Master's Degrees are also encouraged to apply. We are particularly interested in applicants who are strongly field-oriented and are willing to develop and lead single- and multi-day field trips throughout southern California and the Southwest.

Please forward a letter of interest with a brief description of your background, experience and teaching interests to:

Steve Spear  
Geology Program  
Department of Earth, Space & Aviation Sciences  
Palomar College  
1140 W. Mission Road  
San Marcos, CA 92069  
[sspear@palomar.edu](mailto:sspear@palomar.edu)  
(760) 744-1150, ext. 2513

**Layne GeoSciences**, a division of *Layne Christensen Company*, the nation's largest groundwater resource development contractor, is seeking candidates for a *Senior Level Hydrogeologist* position. This position will be based in our Fontana, CA facility. Qualified candidates will possess:

- BS/MS in Geology, Hydrogeology, or Engineering Geology with emphasis on groundwater resources
- Minimum 8-10 years of experience in performing hydrogeological studies (e.g., groundwater exploration and/or water resource development, production well installation and design, wellfield design, surface and borehole (geophysics)
- Excellent written and verbal communication skills, good computer skills

The successful candidate will be involved in hydrogeological studies at project locations primarily in the southwestern US. Candidate may have periodic travel requirements and must be a motivated, self-starting individual looking for a challenging, key position in an expanding organization.

Qualified candidates are encouraged to send a resume to: *Layne GeoSciences* ATTN: Mr. Tony Morgan *Manager-West Coast Operations* 11001 Etiwanda Avenue Fontana, CA 92337, 909-390-2833 909-390-6097 FAX

Resumes should be submitted by email to [tmorgan@laynechristensen.com](mailto:tmorgan@laynechristensen.com).  
We are a drug-free and smoke-free workplace. EOE/M/F/D/V

---

---

**URS Corporation**, ranked number one on Engineering News-Record's list of the Top 500 Design Firms for Seventh consecutive year is a leading provider of planning, design, systems engineering and integration, technology development, program and construction management, and operations and maintenance services to federal, state and local government agencies in the U.S., Fortune 500 corporations worldwide and government clients in Europe and Asia/Pacific. We're currently looking for a Geologist in our San Diego, CA office.

**URS18093 – Geologist**

Responsibilities: Assist Project Manager in conducting Phase I and Phase II Site Assessments and oversight of remedial programs. Ability to successfully complete the following:

Manage small projects from start to finish with limited supervision, familiar with a variety of invasive drilling/subsurface investigation techniques, log borings in accordance with USCS, install monitoring wells in accordance with DEH guidelines, provide fieldwork oversight of subcontractors, prepare work plans, familiar with laboratory analyses and waste characterization criteria, familiar with human health screening criteria, interpretation of geologic and chemical data for surface water, soil, soil gas and groundwater and to assist with preparation of reports summarizing field procedures and results.

Requirements: Minimum Bachelors Degree with 2+ years of experience in the environmental consulting industry or related business. Good written and verbal communication skills, able to work independently and familiar with local regulatory guidelines (DEH, RWQCB, DTSC). Valid drivers license is required due to some travel to/from sites as needed.

URS Corporation is an Equal Opportunity Employer and strongly supports diversity in our workforce. M/F/V/D. We offer competitive salaries and a comprehensive benefits package. For immediate consideration please submit your resume online at [www.urscorp.com](http://www.urscorp.com) and refer to **Requisition # URS18093** or send your resume to [mike\\_blackmore@urscorp.com](mailto:mike_blackmore@urscorp.com)

---

---

**Tetra Tech EC**, a world leader in environmental engineering and consulting, is seeking an **Entry Level Geologist in our San Diego, CA office.**

The qualified candidate will have a Bachelor of Science degree in Geology, hydrogeology, or related field with 0-3 years experience. Primary responsibility will be to assist senior personnel in the planning and execution of projects. The chosen candidate will learn a variety of field sampling and drilling methods for site investigation and remediation projects and perform the acquisition of samples (soil and groundwater) in the field. Good analytical and writing skills required. Up to 50% of time may be in the field on project sites mostly in the Bay area.

Tetra Tech EC, Inc. is an Equal Opportunity Employer and we value team-oriented workplace and workforce diversity. We invite resumes from all interested parties including women, minorities, veterans and persons with disabilities. Tetra Tech offers their employees a comprehensive compensation package and the opportunity to work on large scale government projects.

Candidates who are interested in joining our dynamic team should submit a resume to Tetra Tech EC at [northwest.web@tteci.com](mailto:northwest.web@tteci.com). Resumes should include salary requirements. Please visit our website at [www.tteci.com](http://www.tteci.com) or [www.tetratech.com](http://www.tetratech.com) to see the array of services that we provide and exciting projects we are currently working on.

---

---

**TN & Associates, Inc.** specializes in environmental services, natural resources, infrastructure engineering, and construction services. Our San Diego office is currently looking to fill the following positions:

**Staff Geologist:** Geologist to perform office and field assignments for environmental site assessment and remediation projects. Position will involve soil borings, monitoring well installations, soil and water sampling, historical research investigations, data management, construction documentation and construction QA/QC, and report writing. Ability to adapt to both office and field environments a must. OSHA 40-hour training a plus. Periodic travel is required. **Project Geologist:** Geologist with 3 to 7 years experience required in conducting all aspects of field investigations including limited site assessments, multi-task remedial investigations and remedial actions with a strong emphasis in technical writing skills. The ideal candidate will have experience in data analysis and reporting. PG registration and OSHA 40-hour training a plus. Work will entail some fieldwork and travel, mainly within California. Experience with government projects (DOD, USACE, AFCEE, Navy and USEPA) landfills and stormwater engineering/compliance a plus.

We offer a competitive salary, benefits package and friendly working environment. Equal Opportunity Employer. Please mail or fax your resume and letter of interest to: T N & Associates, Inc., 2247 San Diego Avenue, Suite 238, San Diego CA 92110 , fax 619-291-8100.

---

**CDM** is looking for a fulltime **Engineering Geologist** to join its geotechnical division in the West Coast. The successful candidate will be responsible for the following:

- Conduct geologic field investigations on a wide range of public and private projects involving seismic evaluations, landslides, and subsurface soil, rock and water conditions for dams, buildings, water and waste water treatment facilities, transportation projects and remedial actions.
- Perform and supervise geotechnical and geo-environmental analysis, design, and construction engineering services.
- Provide project management for geotechnical and geo-environmental projects including the preparation of scope, schedules and budgets.
- Contribute to business development and proposal efforts and prepare technical reports.
- **Requirements:** Demonstrate the ability to perform quality-engineering geology services while adhering to project scope, budget, and schedule.
- Must have at least 10 years experience in geological engineering.
- M.S. in engineering geology or related discipline required
- Must be a CA Certified Engineering Geologist (CEG)
- Major project experience involving seismic and fault investigation is a must.
- OSHA 40-hour HAZWOPER training desirable.
- Excellent written and verbal communication skills required.

CDM has consistently earned industry recognition for our innovative project solutions. Recognition by respected professional organizations, such as the American Academy of Environmental Engineers, the American Council of Engineering Companies, and the Design-Build Institute of America, is a testament to CDM's delivery of exceptional service and the right total solutions for each client's needs. We are an equal opportunity employer.

Qualified candidates can send resumes to [mcshefferylj@cdm.com](mailto:mcshefferylj@cdm.com).

---

### **Principal Hydrogeologist**

Looking to make a real impact at work? Ready to "Never be bored"? Natural born leader? Work for an industry leader.....Join MACTEC.

**MACTEC Engineering and Consulting, Inc.** is a leading consulting firm providing engineering, environmental and remedial construction services to public and private clients worldwide. Operating with over 3,000 employees in 100 offices nationwide with a global reach, MACTEC is currently ranked 31st among *Engineering News-Record's* top 500 design firms.

**MACTEC's** Irvine office is in search of a **Principal Hydrogeologist** to lead the geological and hydrogeological efforts, manage a team of committed technical staff members and advance business development opportunities within a variety of clients and projects. This is an excellent opportunity for the "natural born leader" who wants to utilize their technical and leadership skills!

#### **Scope of Role:**

1. Provides hydrogeological guidance and support for soil and groundwater remediation.
2. Develops and presents new approaches and services within environmental consulting market
3. Assumes project management roles and leads site investigation efforts
4. Conducts fate and transport modeling, pump tests and capture zone analysis
5. Develops site specific hydrogeological model.
6. Prepares and deliver technical reports, communications and presentations.

#### **Key Qualifications:**

1. BS/MS/PhD (Geology/Hydrogeology)
2. Min 10 years experience, must have consulting experience as well
3. Must have groundwater modeling experience, CA certification preferred
4. PG, CHG registration in CA required
5. Excellent communication and leadership skills

**MACTEC's benefit offerings include health, dental, vision, short and long term disability, life insurance, paid vacation, sick, holidays, a 401(k) match and tuition reimbursement. More information can be found on our website at [www.MACTEC.com](http://www.MACTEC.com)**

#### **Interested?**

Please apply today via our website: [www.MACTEC.com/](http://www.MACTEC.com/) - click on Careers / CA- Irvine

---

**ATTORNEYS** in San Diego are seeking a candidate to assist their firm with a water case. Ideally, the candidate would be knowledgeable in the areas of groundwater, groundwater basins and other related water issues. Hourly compensation is offered. A candidate is needed immediately.



David M. Watson, Esq.  
Krause Kalfayan Benink & Slavens  
625 Broadway, Suite 635  
San Diego, CA 92101  
Phone: 619-232-0331  
Fax: 619-232-4019  
Email: [dwatson@kkbs-law.com](mailto:dwatson@kkbs-law.com)

Since 1986, clients have turned to **Ninyo & Moore** for innovative solutions to complex geotechnical and environmental challenges. As a leading geotechnical and environmental sciences engineering and consulting firm, Ninyo & Moore provides specialized services to clients in both the public and private sectors. With offices in Colorado, California, Nevada and Arizona, the firm is fully committed to being responsive, cost-efficient, and thorough in meeting its clients' project needs and objectives.

Ninyo & Moore Geotechnical & Environmental Sciences Consultants has immediate employment opportunities in our Denver, Irvine, Las Vegas, Oakland, Phoenix, and San Diego offices. Positions include Engineers and Geologists of all levels, including **Staff Engineers and Geologists, Project Engineers and Geologists, Staff and Project Environmental Scientists, Chief Geotechnical Engineer, and Construction Field and Laboratory Technicians.**

The successful candidates should have a BS or MS degree for staff-level positions and five years or more of experience for project to senior-level positions. The candidates should be detailed oriented and have excellent verbal and written communication skills. Professional Engineer (PE) and/or Professional Geologist (PG) registrations preferred.

Ninyo & Moore offers a competitive salary, excellent benefits and an opportunity for professional growth. Please visit our website for complete and detailed job descriptions and to submit your resume in confidence at [www.ninyoandmoore.com/careers](http://www.ninyoandmoore.com/careers) or mail to our corporate office at 5710 Ruffin Road, San Diego, CA 92123, Attention: Human Resources. EOE

---

**Hargis + Associates, Inc.**, a San Diego based consulting firm specializing in **hydrogeology and engineering**, and **SDAG Corporate Sponsor** currently has opportunities in our San Diego, California office. We are currently looking to fill the following positions:

**CAD Technician:** Ideal candidate is a highly qualified professional for preparation of engineering and geologic graphics. Position requires experience in *AutoCAD* and with engineering process design. Experience with *Civil 3D*, *Land Development Desktop*, *Autoplant*, and *Arcview* a plus.

**Staff Engineer:** Candidate would have a B.S. Degree in Chemical, Civil, or Mechanical Engineering and 3 to 5 years relevant experience including design, operation, and maintenance of remediation systems. Masters degree and registration is a plus. Candidate should possess strong writing and presentation skills. Position will be based in San Diego, California, and will require some travel and field work. Valid driver's license and U.S. Citizenship required. OSHA 40-hour training preferred, but not mandatory.

**Hydrogeologist:** Candidate would have a B.S. Degree in Geology and M. S. Degree would be a plus. Entry level position, with work including soil and groundwater sampling, well installation, aquifer test analysis, and report preparation. Candidate should possess strong writing and presentation skills. Candidate with Hydrogeology coursework or GIS background is a positive. Position will be based in San Diego, and will require travel and field work. Only entry level candidates will be considered. Valid driver's license and U.S. Citizenship required. OSHA 40-hour training preferred, but not mandatory.

**Staff Hydrogeologist:** Position requires minimum a B.S. Degree in Geology, and 3 to 5 years relevant experience, including experience with soils and groundwater sampling, well installation, work plan and report preparation, task management, cost estimating and scheduling. Candidate should possess strong organizational, writing and presentation skills. California Professional Geologist (PG), or ability to obtain within two years, groundwater modeling experience, and Masters degree is a plus. Position will be based in San Diego, and will require some travel and field work. Valid driver's license and U.S. Citizenship required. OSHA 40-hour training required.

Hargis + Associates offer competitive salaries and benefits, and a challenging work atmosphere. Hargis + Associates in an Equal Opportunity Employer. To learn more about Hargis + Associates, please visit our website at: [www.hargis.com](http://www.hargis.com).

No phone calls please. Qualified candidates should send resumes, along with a cover letter summarizing experience and salary requirements to:

Hargis + Associates, Inc.  
Attention: Jennifer Layton  
2365 Northside Drive, Suite C-100  
San Diego, CA 92108

---

**The San Diego Natural History Museum** is run and operated by the San Diego Society of Natural History, a private non-profit scientific organization incorporated in 1874. The Museum's mission is to interpret the natural world through research, education and exhibits; to promote understanding of the evolution and diversity of Southern California and the peninsula of Baja California; and to inspire in all a respect for nature and the environment.

Within the Museum, the Department of PaleoServices (DPS) specializes in paleontological resource management. Our focus is on the recognition, recovery, and preservation of the significant and unique paleontological resources that occur in this region. The activities of DPS are helping to preserve significant fossil assemblages and are directly contributing to the growth of the important paleontological research collections at the Museum. We are currently looking to fill the following position:

**Paleontological Field Manager:** Position responsibilities include coordination of paleontological field activities (i.e., supervision of field monitors in prospecting for and collection of fossils and the recording of stratigraphic, taphonomic, geographic, and topographic data) and production of final project reports that summarize the methods and preliminary results of paleontological salvage activities. Other duties include generation of initial discovery letter reports for City, County, and/or State agency managers and generation of paleontological resource assessment technical reports. Opportunities also include paleontological field work in the Southern California region and working with the extensive fossil collections of the San Diego Natural History Museum.

Qualified candidates must have at least a B.S. Degree in Geology or Paleobiology; 2 to 3 years of relevant experience (especially sedimentary geology and paleontology); excellent supervisory/managerial, verbal, written, and interpersonal skills; and a strong work ethic, intense drive, and initiative for quality and customer service. This position is a regular, full-time salaried position with a generous benefits package (e.g., full medical and 401K plan). Compensation will be based on individual qualifications and experience (annual salary range \$40,000 to \$60,000).

**NOTE THE FOLLOWING JOB ANNOUNCEMENT FROM ADECCO, inc. in Carlsbad:**



## **DIAMOND GRADER – Will Train!**

*Build a unique career in an expanding laboratory. Work with diamonds, microscopes and computers in a laboratory production environment that emphasizes quality and precision.*

*Do you like detailed work that emphasizes quality and precision? Do you grasp new information quickly? Would you like to receive paid on-the-job training and begin a career grading diamonds? If you answered yes, you should consider an entry-level career in Gemology!*

Our client is expanding its laboratory staff to meet the growing needs of the industry. They are a nonprofit institute dedicated to gem and jewelry research and learning.

**Job Title: Diamond Grader**

**Starting Pay: \$12.69+ per hour**

**Location: Carlsbad, CA**

**\*\*Relocation package is available\*\*\***

**POSITION SUMMARY:** Full-time entry-level positions to perform the identification and quality analysis of diamonds use a standardized system.

### **CANDIDATES SHOULD POSSESS**

- Strong Attention to Detail • Basic Computer Skills (Windows)
- Ability to Sit for Long Periods of Time • Ability to Use a Microscope
- Ability to Grasp New Information Quickly
- Good Decision Making Skills
- Desire to Continually Learn New Information
- Ability to Accept Constructive Criticism

### **BENEFITS INCLUDE**

- Comprehensive Medical, Dental & Vision • Paid On-The-Job Training
- 401(k) and Pension Plan • Employee Referral Program
- Vacation & Holiday Pay
- Continuing Education • Life Insurance and more!

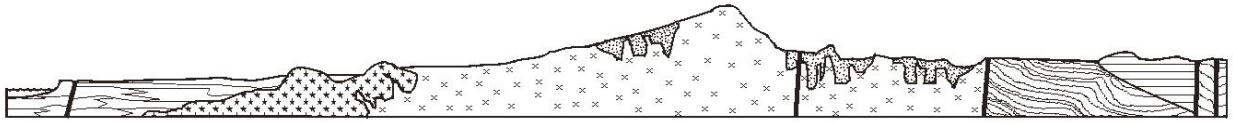
### **HOW TO APPLY**

Please send your resume to [lissette.esquer@adeccona.com](mailto:lissette.esquer@adeccona.com)

You are welcome to contact us at (760) 931-8182 for an appointment

Equal Opportunity Employer, Drug-Free Environment

**Visit our website at [www.adeccousa.com](http://www.adeccousa.com)**



# SAN DIEGO ASSOCIATION OF GEOLOGISTS

[www.sandiegogeologists.org](http://www.sandiegogeologists.org)

## 2008 MEMBERSHIP FORM

**NAME:** \_\_\_\_\_

Please type or print clearly, and check your chosen delivery address below.

**Home Address:** \_\_\_\_\_

*Include in directory* \_\_\_\_\_

**Work Address:** \_\_\_\_\_

*Include in directory* \_\_\_\_\_

*Please include company or other affiliation*

**Preferred Mailing Address (Check One):**       **Home**       **Work**

**E-mail Address:** \_\_\_\_\_

**Website:** \_\_\_\_\_

**Field(s) of Interest:** \_\_\_\_\_

**Phone:** Home: (    )                      Work: (    )                      Cell: (    )

**NEW POLICY:** *Your membership dues include email delivery of the monthly newsletter. If you wish to receive a hardcopy of the newsletter through US Mail, please add \$10.00 to your membership dues.*

<b>Dues:</b>	_____ <b>Student Member (email delivery only)</b>	<b>\$ 5.00</b>
<b>(check choice)</b>	_____ <b>Regular Member (email delivery only)</b>	<b>\$ 25.00</b>
	_____ <b>Subscription to hardcopy newsletter</b>	<b>\$ 10.00</b>
	_____ <b>Corporate Sponsor (email delivery only)</b>	<b>\$100.00</b>

*(Name as you would like it to appear in guidebook and website)*

**New Member**                       **Continuing Member**

**Date:** \_\_\_\_\_                      **Check for change of mailing address:**

**Please enclose a check payable to SDAG, and mail to:**

**San Diego Association of Geologists  
PMB 157  
5694 Mission Center Road, Suite 602  
San Diego, CA 92108**

**San Diego Association of Geologists  
PMB 157  
5694 Mission Center Road, Suite 602  
San Diego, CA 92108**