



SAN DIEGO ASSOCIATION OF GEOLOGISTS

www.sandiegoeologists.org

SDAG MEETING ANNOUNCEMENT

WEDNESDAY, November 19th, 2008

THE GEOLOGY, WILDLIFE, AND SCENERY IN THE SVALBARD ARCHIPELAGO AND HOW A FEW DEGREES OF GLOBAL WARMING WILL CHANGE LIFE IN THIS BEAUTIFUL HIGH ARCTIC SETTING.

Presented by

Monte Marshall, Emeritus Professor of Geologic Sciences, SDSU

Where: Catalina Room (southern end of MVCC) SEE MAP
Marina Village Conference Center
1936 Quivira Way, San Diego, CA 92109

When: 5:30 pm – Social Hour
6:30 pm – Dinner
7:00 pm – Program

Directions: FROM INTERSTATE 5: Take the SEA WORLD DRIVE exit. From SEA WORLD DRIVE, take WEST MISSION BAY DRIVE on your right. When you see the large green sign that says QUIVIRA ROAD, get in the farthest left of the two left turn lanes. Turn left, go one very short block and turn left again. Drive about one half mile and MARINA VILLAGE will be on your right.

FROM INTERSTATE 8: Take the WEST MISSION BAY DRIVE exit to the right. You will be on INGRAHAM STREET for a short distance from which you will take the next exit marked WEST MISSION BAY DRIVE on your right. When you see the large green sign that says QUIVIRA ROAD, get in the farthest left of the two left turn lanes. Turn left, go one very short block and turn left again. Drive about one half mile and MARINA VILLAGE will be on your right.

Dinner:

HAWAIIAN BUFFET

Cost: \$25, current members with reservation; \$30.00, non members and members after deadline;
STUDENTS: \$15.

Reservations: Make your reservation online at www.sandiegoeologists.org no later than noon,
Monday, November 17th.



2008 SDAG MEETING SCHEDULE – Mark your Calendars!

Meetings are usually on the 3rd Wednesday of the month but may change to accommodate speaker and meeting place schedules. Check here for updates!

December 17	

2008 EXECUTIVE COMMITTEE

PRESIDENT - Sarah Gray; University of San Diego, Ph: (619) 260-4098; fax: (619)260-6874; sgray@sandiego.edu

VICE PRESIDENT- Scott Snyder; Ninyo & Moore; Ph: (858) 576-1000; sdag2006@prodigy.net

SECRETARY – Bryan Miller-Hicks; geobry@aol.com; bryanmillerhicks@gmail.com

TREASURER - Chuck Houser; PetraGeotechnical Inc.; Ph: (858) 485-5530; chouser@petra-inc.com

PUBLICATIONS-Lowell Lindsay; Sunbelt Publications; Ph: (619)258-4911 x111; fax:(619)258-4916; lindsay@sunbeltpub.com

WEBMASTER – Carolyn Glockhoff; Caro-Lion Enterprises, Ph: (858) 549-3396; carolyn@caro-lion.com

SPEAKER BIO

A true San Diego native, Montek the Terrible, was born in Mercy Hospital on a bright sunny Sunday in 1939. Having spent a good part of his boyhood playing in the canyon behind his home in University Heights (chopping down innumerable eucalyptus trees with his boy scout axe—after building tree houses in them, digging secret tunnels, an irrigation system from his backyard to the bottom of the canyon-- in which he had built a series of Poway cobble dams, a d capturing the last scorpions and black widow spiders ever seen in that canyon), he was sent to Villanova U to be civilized. Following considerable refining, he was allowed to return to SD and was reluctantly granted a geology degree by State College. Just a few years later, at the peak of his academic prowess, he was again reluctantly granted a PhD (temporary, this time) by L. Stanford Junior University. He spent four years working for the U.S. Geological Society, but little is known about his activities then or during the next 30 years. It seems that he had gotten lost in a dark, mysterious room, filled with spinning rock cores, in the basement of the geology building at the now-famous SDSU. And, beyond campus, occasional pedestrians would report a tall, somewhat gangly man carrying an aluminum box along city sidewalks, muttering “mgals, mgals”! Finally, he bid a fond, but somewhat sad, farewell to devoted (mostly!) students and faculty alike, and retired to his beloved tree house in one of the canyons of his happy youth.

ABSTRACT

THE GEOLOGY, WILDLIFE, AND SCENERY IN THE SVALBARD ARC AND HOW A FEW DEGREES OF GLOBAL WARMING WILL CHANGE LIFE IN THIS BEAUTIFUL HIGH ARCTIC SETTING.

Having been to alpine and polar regions many times in my life, I have gotten to love and appreciate the turquoise beauty of glaciers and ice sheets. During these same years I have seen the glaciers recede, in one case by hundreds of feet. Sea ice that almost filled the Arctic Ocean when I was wielding my boy scout axe was predicted to be gone by 2100! Then, “whoops, we’re sorry”, now may be gone by 2030! So, before it’s too late either for me or the ice, I decided to go back up into the high arctic to a set of islands off the northeast coast of Greenland, the Svalbard Islands/Archipelago. The largest island, Spitzbergen, the Norwegian administrative center, Longyearbyen, which, with its airport, hotels, and permanent houses, is the farthest north town in the world!

This group of islands, covered 60 % by snow and ice, are situated at the extreme northwest corner of the Eurasian plate. To their east and south continue the crust with several shallow seas, like the Barents, extends down to the north tip of Norway and Russia. To the north, the continental shelf drops down into the Arctic Ocean, with the North Pole at its center. The Atlantic spreading center, which had started rifting North America away from NW Africa and Western Europe at 200 Ma, didn’t reach the Svalbard Islands until about 55 Ma. After first trying to steal Greenland from North America, the North Atlantic spreading center tore Greenland from the Eurasian plate and is now halfway between eastern Greenland and the Svalbards. The strait is currently the only deep water passage between the Arctic and North Atlantic and other oceans!

The oldest rocks in the islands are Archean to lower Paleozoic metasediments and plutonic rocks. They were squeezed for the last time during the Appalachian-Caledonian Orogeny that accompanied the closure of the proto-Atlantic ocean. They form the basement on which are deposited many thousands of feet of both continental and marine, mostly flat-lying, clastic rocks. The islands contain fairly complete sections of Mesozoic and Cenozoic sedimentary rocks. Paleomagnetic studies suggest that the island/this part of the ‘European’ plate was at the equator during the Devonian and Carboniferous, which fits with the fairly abundant coal deposits of that age. These, the Tertiary coals, and fishing are the main reason that various entrepreneurs, especially Russians and Americans, came to settle in this desolate place. In fact, the capitol is named after an American coal miner, a Mr. Longyear. Continental drift carried the islands to their high latitude in Tertiary time and continental rifting separated them from Greenland and tilted them in fault blocks that brought the pre-Devonian basement to the surface and formed the jagged alpine peaks that give Spitsbergen its name.

I will show pictures of the polar bears, walrus, and vast bird colonies. Since the Arctic seems to be the ‘canary in the coal mine’, the last part of my talk will contain the latest published data on global climate change. I will only half-jokingly propose the possibility that our great grandchildren may have to travel to Antarctica to see the only ice outside of that in their martini glasses! :-(

PRESIDENTS CORNER, NOVEMBER 2008

“Oasis in the desert”, our SDAG annual field trip to the Coachella Valley on the weekend of October 17th - 19th turned out to be another fantastic geoeexperience for about 45 SDAG members and friends (see photo collage below). Scott Snyder put together such an excellent program and a great group of speakers including Harry Quinn, Brian White, Miles Kenney and Nate Onderdonk. It was a truly interdisciplinary trip which included discussions of the history and archeology of the Cahuilla people as well as the geology and hydrology of the region. A fun-filled Friday afternoon started with an overlook of the Anza Valley and the San Jacinto Fault Zone and then took us to see the Hot Springs Fault outcrop, the Garner Valley, Indian Canyon, and an overlook into the Coachella Valley. Saturday included overviews of the Coachella Plateau tectonic history and the Santa Rosa Mylonite Zone, a look at fault trenches, the welcome shade of the palm Oases that occur along the Mission Creek and Banning strands of the San Andreas Fault, and finally a hike down into Indian Palm Canyon. By the time we hiked out of the canyon, the weather had cooled to a pleasant 99 degrees. We were all ready to kick back along the ancient shore line at the Lake Cahuilla campground Saturday night in true SDAG style (campfire, fine beer, wine and excellent food). On Sunday morning, Scott shared a thorough summary of the complex issues associated with groundwater and water resources in the Coachella Valley. The highlight of Sunday’s program was a trip to see the tufa and fish traps along Ancient Lake Cahuilla shoreline followed by a visit to the Marinez Mountain Rock Slide. Thanks again Scott, the Murbachs, Carole Ziegler, and of course our mobile beer keg meister, Greg Cranham for another awesome weekend of geology!

This month, November 19th, at Marina Village, we welcome our young friend Montek the Terrible (known in respectable circles as Dr. Monte Marshall) to share his geotravel adventure in Greenland with a talk entitled, “The geology, wildlife and scenery in the Svalbard Archipelago and how a few degrees of global warming will change life in this beautiful high arctic setting”.

This is also the time of year when you should start thinking about getting more involved in SDAG. We’ll be electing a new SDAG secretary next month at our December Museum meeting. If you’d like to find out more about getting involved, please email or call me. It’s a lot of fun. Also, keep those ideas coming for One Stop Wonders.

Happy Thanksgiving, everyone,

--Sarah

Oasis in the desert, 2008



Brian White shows structures in mylonites



Pointing fingers with Harry Quinn



SDAG field trip scholarship recipients Traci and Selene from USD along with John Tuberville.



Tufa covered boulders below ancient Lake Cahuilla's shoreline



Getting one's nose up to the rocks!



The ancient Lake Cahuilla "bathtub ring" near the campground



Tufinated petroglyphs



Fish traps along Lake Cahuilla



Looking for petroglyphs

JOB OPENINGS!

CA ~ Coast ~ Geologist ~ Independent Energy Company

Select candidates are being sought for this unique opportunity with an independent energy company. Qualified candidates will possess:

- Bachelors or Masters of Science in Geology.
- 1 to 15 years experience in oil and gas exploration and production.
- Experience with Microsoft Office software.
- Extensive knowledge of current 2D and/or 3D mapping techniques and industry software such as Geographix.

The incumbent will:

- Be responsible for generating exploitation and exploration opportunities by providing geologic/geophysical support to interdisciplinary teams in the development and operation of company owned assets.
- Evaluate data from well logs, cores, well cuttings, and seismic surveys to develop subsurface maps (e.g. structure, formation thickness, net sand, and HCPV) and cross-sections of potential and/or proven productive geologic horizons.
- Analyze and interpret the regional structural and stratigraphic relations, including published regional geologic and offset field studies, for an assigned area providing interpretations that allow the complete evaluation of upside potential.
- Estimate oil and/or gas reserves in proven or prospective fields, recommend development of operated properties and/or joint venture endeavors and consult with Petroleum Engineers concerning drilling and production methods.
- During drilling operations, work closely with onsite mud logger to identify formation tops and presence of potentially productive zones from shows and from these indicators, provide information to allow determination of well TD.
- Coordinate technical projects with Geophysicists, Engineers, Geologic Technicians and other support staff.

The selected candidate will enjoy a comprehensive remuneration/benefits package structured in line with their background and ability to contribute. This is truly an exceptional opportunity for an exceptional professional.

For immediate and confidential consideration, time is of the essence, qualified candidates are encouraged to submit a current resume to:

Larry V. Combs, Esq.
4450 California Ave., #319
Bakersfield, CA 93309-1152
Phone: 661-831-0149

PREFERRED SUBMISSION METHOD:

Email: Lcombs@Search4um.com

PART-TIME GEOLOGY/EARTH SCIENCE INSTRUCTORS, PALOMAR COLLEGE

Beginning with the Spring, 2009 semester, the Earth, Space & Aviation Sciences Department at Palomar College will have several openings for part-time instructors in Physical Geology, Historical Geology and Introductory Earth Sciences. Most of the course offerings will be in the evenings or late afternoons or on Fridays.

Applicants should have a Master's Degree in Geology or a closely related field. Persons who are nearing completion of their Master's Degrees are also encouraged to apply. We are particularly interested in applicants who are strongly field-oriented and are willing to develop and lead single- and multi-day field trips throughout southern California and the Southwest.

Please forward a letter of interest with a brief description of your background, experience and teaching interests to:

Steve Spear
Geology Program
Department of Earth, Space & Aviation Sciences
Palomar College
1140 W. Mission Road
San Marcos, CA 92069
sspear@palomar.edu
(760) 744-1150, ext. 2513

Layne GeoSciences, a division of **Layne Christensen Company**, the nation's largest groundwater resource development contractor, is seeking candidates for a **Senior Level Hydrogeologist** position. This position will be based in our Fontana, CA facility. Qualified candidates will possess:

- BS/MS in Geology, Hydrogeology, or Engineering Geology with emphasis on groundwater resources
- Minimum 8-10 years of experience in performing hydrogeological studies (e.g., groundwater exploration and/or water resource development, production well installation and design, wellfield design, surface and borehole (geophysics)
- Excellent written and verbal communication skills, good computer skills

The successful candidate will be involved in hydrogeological studies at project locations primarily in the southwestern US. Candidate may have periodic travel requirements and must be a motivated, self-starting individual looking for a challenging, key position in an expanding organization.

Qualified candidates are encouraged to send a resume to: **Layne GeoSciences** ATTN: Mr. Tony Morgan **Manager-West Coast Operations** 11001 Etiwanda Avenue Fontana, CA 92337, 909-390-2833 909-390-6097 FAX

Resumes should be submitted by email to tmorgan@laynechristensen.com.

We are a drug-free and smoke-free workplace. EOE/M/F/D/V

URS Corporation, ranked number one on Engineering News-Record's list of the Top 500 Design Firms for Seventh consecutive year is a leading provider of planning, design, systems engineering and integration, technology development, program and construction management, and operations and maintenance services to federal, state and local government agencies in the U.S., Fortune 500 corporations worldwide and government clients in Europe and Asia/Pacific. We're currently looking for a Geologist in our San Diego, CA office.

URS18093 – Geologist

Responsibilities: Assist Project Manager in conducting Phase I and Phase II Site Assessments and oversight of remedial programs. Ability to successfully complete the following:

Manage small projects from start to finish with limited supervision, familiar with a variety of invasive drilling/subsurface investigation techniques, log borings in accordance with USCS, install monitoring wells in accordance with DEH guidelines, provide fieldwork oversight of subcontractors, prepare work plans, familiar with laboratory analyses and waste characterization criteria, familiar with human health screening criteria, interpretation of geologic and chemical data for surface water, soil, soil gas and groundwater and to assist with preparation of reports summarizing field procedures and results.

Requirements: Minimum Bachelors Degree with 2+ years of experience in the environmental consulting industry or related business. Good written and verbal communication skills, able to work independently and familiar with local regulatory guidelines (DEH, RWQCB, DTSC). Valid drivers license is required due to some travel to/from sites as needed.

URS Corporation is an Equal Opportunity Employer and strongly supports diversity in our workforce. M/F/V/D. We offer competitive salaries and a comprehensive benefits package. For immediate consideration please submit your resume online at www.urscorp.com and refer to **Requisition # URS18093** or send your resume to mike_blackmore@urscorp.com

Tetra Tech EC, a world leader in environmental engineering and consulting, is seeking an **Entry Level Geologist** in our **San Diego, CA office**.

The qualified candidate will have a Bachelor of Science degree in Geology, hydrogeology, or related field with 0-3 years experience. Primary responsibility will be to assist senior personnel in the planning and execution of projects. The chosen candidate will learn a variety of field sampling and drilling methods for site investigation and remediation projects and perform the acquisition of samples (soil and groundwater) in the field. Good analytical and writing skills required. Up to 50% of time may be in the field on project sites mostly in the Bay area.

Tetra Tech EC, Inc. is an Equal Opportunity Employer and we value team-oriented workplace and workforce diversity. We invite resumes from all interested parties including women, minorities, veterans and persons with disabilities. Tetra Tech offers their employees a comprehensive compensation package and the opportunity to work on large scale government projects.

Candidates who are interested in joining our dynamic team should submit a resume to Tetra Tech EC at northwest.web@tteci.com. Resumes should include salary requirements. Please visit our website at www.tteci.com or www.tetratech.com to see the array of services that we provide and exciting projects we are currently working on.

TN & Associates, Inc. specializes in environmental services, natural resources, infrastructure engineering, and construction services. Our San Diego office is currently looking to fill the following positions:

Staff Geologist: Geologist to perform office and field assignments for environmental site assessment and remediation projects. Position will involve soil borings, monitoring well installations, soil and water sampling, historical investigations, data management, construction documentation and construction QA/QC, and report writing. Ability to adapt to both office and field environments a must. OSHA 40-hour training a plus. Periodic travel is required. **Project Geologist:** Geologist with 3 to 7 years experience required in conducting all aspects of field investigations including limited site assessments, multi-task remedial investigations and remedial actions with a strong emphasis in technical writing skills. The ideal candidate will have experience in data analysis and reporting. PG registration and OSHA 40-hour training a plus. Work will entail some fieldwork and travel, mainly within California. Experience with government projects (DOD, USACE, AFCEE, Navy and USEPA) landfills and stormwater engineering/compliance a plus.

We offer a competitive salary, benefits package and friendly working environment. Equal Opportunity Employer. Please mail or fax your resume and letter of interest to: T N & Associates, Inc., 2247 San Diego Avenue, Suite 2 Diego CA 92110, fax 619-291-8100.

CDM is looking for a fulltime **Engineering Geologist** to join its geotechnical division in the West Coast. The successful candidate will be responsible for the following:

- Conduct geologic field investigations on a wide range of public and private projects involving seismic evaluations, landslides, and subsurface soil, rock and water conditions for dams, buildings, water and waste water treatment facilities, transportation projects and remedial actions.
- Perform and supervise geotechnical and geo-environmental analysis, design, and construction engineering services.
- Provide project management for geotechnical and geo-environmental projects including the preparation of scope, schedules and budgets.
- Contribute to business development and proposal efforts and prepare technical reports.
- **Requirements:** Demonstrate the ability to perform quality-engineering geology services while adhering to project scope, budget, and schedule.
- Must have at least 10 years experience in geological engineering.
- M.S. in engineering geology or related discipline required
- Must be a CA Certified Engineering Geologist (CEG)
- Major project experience involving seismic and fault investigation is a must.
- OSHA 40-hour HAZWOPER training desirable.
- Excellent written and verbal communication skills required.

CDM has consistently earned industry recognition for our innovative project solutions. Recognition by respected professional organizations, such as the American Academy of Environmental Engineers, the American Council of Engineering Companies, and the Design-Build Institute of America, is a testament to CDM's delivery of exceptional service and the right total solutions for each client's needs. We are an equal opportunity employer.

Qualified candidates can send resumes to mcshefferylj@cdm.com.

Principal Hydrogeologist

Looking to make a real impact at work? Ready to "Never be bored"? Natural born leader? Work for an industry leader.....Join MACTEC.

MACTEC Engineering and Consulting, Inc. is a leading consulting firm providing engineering, environmental and remedial construction services to public and private clients worldwide. Operating with over 3,000 employees in 100 offices nationwide with a global reach, MACTEC is currently ranked 31st among **Engineering News-Record's** top 500 design firms.

MACTEC's Irvine office is in search of a **Principal Hydrogeologist** to lead the geological and hydrogeological efforts, manage a team of committed technical staff members and advance business development opportunities within a variety of clients and projects. This is an excellent opportunity for the "natural born leader" who wants to utilize their technical and leadership skills!

Scope of Role:

1. Provides hydrogeological guidance and support for soil and groundwater remediation.
2. Develops and presents new approaches and services within environmental consulting market
3. Assumes project management roles and leads site investigation efforts
4. Conducts fate and transport modeling, pump tests and capture zone analysis
5. Develops site specific hydrogeological model.
6. Prepares and deliver technical reports, communications and presentations.

Key Qualifications:

1. BS/MS/PhD (Geology/Hydrogeology)
2. Min 10 years experience, must have consulting experience as well
3. Must have groundwater modeling experience, CA certification preferred
4. PG, CHG registration in CA required
5. Excellent communication and leadership skills

MACTEC's benefit offerings include health, dental, vision, short and long term disability, life insurance, paid vacation, sick, holidays, a 401(k) match and tuition reimbursement. More information can be found on our website at www.MACTEC.com

Interested?

Please apply today via our website: www.MACTEC.com/ - click on Careers / CA- Irvine

ATTORNEYS in San Diego are seeking a candidate to assist their firm with a water case. Ideally, the candidate would be knowledgeable in the areas of groundwater, groundwater basins and other related water issues. Hourly compensation is offered. A candidate is needed immediately.

David M. Watson, Esq.

Krause Kalfayan Benink & Slavens

625 Broadway, Suite 635

San Diego, CA 92101

Phone: 619-232-0331

Fax: 619-232-4019

Email: dwatson@kkbs-law.com

Since 1986, clients have turned to **Ninyo & Moore** for innovative solutions to complex geotechnical and environmental challenges. As a leading geotechnical and environmental sciences engineering and consulting firm, Ninyo & Moore provides specialized services to clients in both the public and private sectors. With offices in Colorado, California, Nevada and Arizona, the firm is fully committed to being responsive, cost-efficient, and thorough in meeting its clients' project needs and objectives.

Ninyo & Moore Geotechnical & Environmental Sciences Consultants has immediate employment opportunities in our Denver, Irvine, Las Vegas, Oakland, Phoenix, and San Diego offices. Positions include Engineers and Geologists of all levels, including **Staff Engineers and Geologists, Project Engineers and Geologists, Staff and Project Environmental Scientists, Chief Geotechnical Engineer, and Construction Field and Laboratory Technicians.**

The successful candidates should have a BS or MS degree or staff-level positions and five years or more of experience for project to senior-level positions. The candidates should be detailed oriented and have excellent verbal and written communication skills. Professional Engineer (PE) and/or Professional Geologist (PG) registrations preferred.

Ninyo & Moore offers a competitive salary, excellent benefits and an opportunity for professional growth. Please visit our website for complete and detailed job descriptions and to submit your resume in confidence at www.ninyoandmoore.com/careers or mail to our corporate office at 5710 Ruffin Road, San Diego, CA 92123, Attention: Human Resources. EOE

Hargis + Associates, Inc., a San Diego based consulting firm specializing in **hydrogeology and engineering**, and **SDAG Corporate Sponsor** currently has opportunities in our San Diego, California office. We are currently looking to fill the following positions:

CAD Technician: Ideal candidate is a highly qualified professional for preparation of engineering and geologic graphics. Position requires experience in AutoCAD and with engineering process design. Experience with Civil 3D, Land Development Desktop, Autoplant, and Arcview a plus.

Staff Engineer: Candidate would have a B.S. Degree in Chemical, Civil, or Mechanical Engineering and 3 to 5 years relevant experience including design, operation, and maintenance of remediation systems. Masters degree and registration is a plus. Candidate should possess strong writing and presentation skills. Position will be based in San Diego, California, and will require some travel and field work. Valid driver's license and U.S. Citizenship required. OSHA 40-hour training preferred, but not mandatory.

Hydrogeologist: Candidate would have a B.S. Degree in Geology and M. S. Degree would be a plus. Entry level position, with work including soil and groundwater sampling, well installation, aquifer test analysis, and report preparation. Candidate should possess strong writing and presentation skills. Candidate with Hydrogeology coursework or GIS background is a positive. Position will be based in San Diego, and will require travel and field work. Only entry level candidates will be considered. Valid driver's license and U.S. Citizenship required. OSHA 40-hour training preferred, but not mandatory.

Staff Hydrogeologist: Position requires minimum a B.S. Degree in Geology, and 3 to 5 years relevant experience, including experience with soils and groundwater sampling, well installation, work plan and report preparation, task management, cost estimating and scheduling. Candidate should possess strong organizational, writing and presentation skills. California Professional Geologist (PG), or ability to obtain within two years, groundwater modeling experience, and Masters degree is a plus. Position will be based in San Diego, and will require some travel and field work. Valid driver's license and U.S. Citizenship required. OSHA 40-hour training required.

Hargis + Associates offer competitive salaries and benefits, and a challenging work atmosphere. Hargis + Associates in an Equal Opportunity Employer. To learn more about Hargis + Associates, please visit our website at: www.hargis.com.

No phone calls please. Qualified candidates should send resumes, along with a cover letter summarizing experience and salary requirements to:

Hargis + Associates, Inc.
Attention: Jennifer Layton
2365 Northside Drive, Suite C-100
San Diego, CA 92108

The San Diego Natural History Museum is run and operated by the San Diego Society of Natural History, a private non-profit scientific organization incorporated in 1874. Museum's mission is to interpret the natural world through research, education and exhibits; to promote understanding of the evolution and diversity of Southern California and the peninsula of Baja California; and to inspire in all a respect for nature and the environment.

Within the Museum, the Department of PaleoServices (DPS) specializes in paleontological resource management. Our focus is on the recognition, recovery, and preservation of the significant and unique paleontological resources that occur in this region. The activities of DPS are helping to serve significant fossil assemblages and are directly contributing to the growth of the important paleontological research collections at the Museum. We are currently looking to fill the following position:

Paleontological Field Manager: Position responsibilities include coordination of paleontological field activities (i.e., supervision of field monitors in prospecting for and collection of fossils and the recording of stratigraphic, taphonomic, geographic, and topographic data) and production of final project reports that summarize the methods and preliminary results of paleontological salvage activities. Other duties include generation of initial discovery letter reports for City, County, and/or State agency managers and generation of paleontological resource assessment technical reports. Opportunities also include paleontological field work in the Southern California region and working with the extensive fossil collections of the San Diego Natural History Museum.

Qualified candidates must have at least a B.S. Degree in Geology or Paleobiology; 2 to 3 years of relevant experience (especially sedimentary geology and paleontology); excellent communication/managerial, verbal, written, and interpersonal skills; and a strong work ethic, intense drive, and initiative for quality and customer service. This position is a regular, full-time salaried position with a generous benefits package (e.g., full medical and 401K plan). Compensation will be based on individual qualifications and experience (annual salary range \$40,000 to \$60,000).

NOTE THE FOLLOWING JOB ANNOUNCEMENT FROM ADECCO, inc. in Carlsbad:



DIAMOND GRADER - Will Train!

Build a unique career in an expanding laboratory. Work with diamonds, microscopes and computers in a laboratory production environment that emphasizes quality and precision.

Do you like detailed work that emphasizes quality and precision? Do you grasp new information quickly? Would you like to receive paid on-the-job training and begin a career grading diamonds? If you answered yes, you should consider an entry-level career in Gemology!

Our client is expanding its laboratory staff to meet the growing needs of the industry. They are a nonprofit institute dedicated to gem and jewelry research and learning.

Job Title: Diamond Grader

Starting Pay: \$12.69+ per hour

Location: Carlsbad, CA

****Relocation package is available*****

POSITION SUMMARY: Full-time entry-level positions to perform the identification and quality analysis of diamonds use a standardized system.

CANDIDATES SHOULD POSSESS

- Strong Attention to Detail • Basic Computer Skills (Windows)
- Ability to Sit for Long Periods of Time • Ability to Use a Microscope
- Ability to Grasp New Information Quickly
- Good Decision Making Skills
- Desire to Continually Learn New Information
- Ability to Accept Constructive Criticism

BENEFITS INCLUDE

- Comprehensive Medical, Dental & Vision • Paid On-The-Job Training
- 401(k) and Pension Plan • Employee Referral Program
- Vacation & Holiday Pay
- Continuing Education • Life Insurance and more!

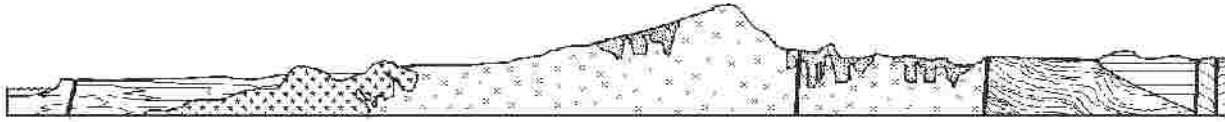
HOW TO APPLY

Please send your resume to lisette.esquer@adeccona.com

You are welcome to contact us at (760) 931-8182 for an appointment

Equal Opportunity Employer, Drug-Free Environment

Visit our website at www.adeccousa.com



SAN DIEGO ASSOCIATION OF GEOLOGISTS

www.sandiegogeologists.org

2008 MEMBERSHIP FORM

NAME: _____

Please type or print clearly, and check your chosen delivery address below.

Home Address: _____

Include in _____
directory _____

Work Address: _____

Include in _____
directory _____

Please include company or other affiliation

Preferred Mailing Address (Check One): Home Work

E-mail Address: _____

Website: _____

Field(s) of Interest: _____

Phone: Home: () Work: () Cell: ()

NEW POLICY: Your membership dues include email delivery of the monthly newsletter. If you wish to receive a hardcopy of the newsletter through US Mail, please add \$ 10.00 to your membership dues.

Dues:	_____ Student Member (email delivery only)	\$ 5.00
(check choice)	_____ Regular Member (email delivery only)	\$ 25.00
	_____ Subscription to hardcopy newsletter	\$ 10.00
	_____ Corporate Sponsor (email delivery only)	\$ 100.00

_____ (Name as you would like it to appear in guidebook and website)

New Member Continuing Member

Date: _____ Check for change of mailing address:

Please enclose a check payable to SDAG, and mail to:

**San Diego Association of Geologists
PMB 157
5694 Mission Center Road, Suite 602
San Diego, CA 92108**

**San Diego Association of Geologists
PMB 157
5694 Mission Center Road, Suite 602
San Diego, CA 92108**