

# SAN DIEGO ASSOCIATION OF GEOLOGISTS

[www.sandiegoeologists.org](http://www.sandiegoeologists.org)

## ANNUAL SDAG HOLIDAY MEETING ANNOUNCEMENT

**Wednesday, December 19, 2007**

### ***PLEISTOCENE LAND MAMMALS OF WESTERN SAN DIEGO COUNTY: NEW DISCOVERIES OF MASTODONS AND MAMMOTHS.***

*presented by*

**Dr. Tom Demere', San Diego Natural History Museum**

**Where:** Reuben H. Fleet Science Center  
1875 El Prado  
San Diego, CA 92101  
Phone: 619-238-1233

**When:** 5:30 pm – Social Hour  
6:30 pm – Dinner  
7:30 pm – Program

**Directions:** **Traveling South on Interstate 5:** Take 10th Ave. exit near downtown. Turn left on A street at the first light. While turning get into one of the 2 right lanes, cross 11th Ave., then turn left on Park Blvd. Go through 4 lights and then make a left turn at Space Theater Way into our parking lot.

**Traveling North on Interstate 5:** Take the Pershing Drive - B Street exit stay to the left. Turn left on B Street, then right at the first light on Park Blvd. Go through 4 lights and then make a left turn at Space Theater Way into our parking lot.

**From Interstate 8:** take Highway 163 south in Mission Valley. Take the Park Blvd exit from 163. Turn left on Park Blvd. Go through 2 lights and then make a left turn at Space Theater Way into our parking lot.

**From Interstate 805:** take Interstate 8 west to Highway 163. Take highway 163 south. Take the Interstate 5 south / Park Blvd. interchange. Stay in the right lane and take the Park Blvd. exit. Turn left on Park Blvd. Go through two lights and then make a left turn at Space Theater Way into our parking lot.

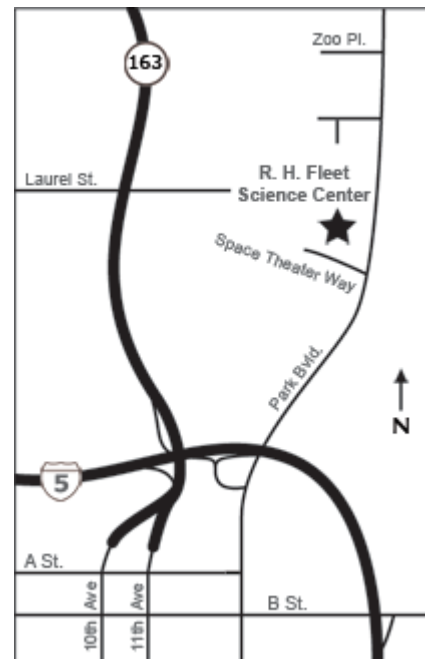
**From Highway 163 South:** take the Interstate 5 south / Park Blvd. interchange. Stay in the right lane and take the Park Blvd. exit. Turn left on Park Blvd. Go through two lights and then make a left turn at Space Theater Way into our parking lot.

**From the 94 West:** into downtown. Stay in right hand lane for 4 blocks till you hit Park Blvd. Turn right on Park Blvd and head north. You'll go through 8 lights and turn left onto Space Theater Way.

**Dinner:** Taco Bar, including soft drinks, water, beer and wine.

**Cost:** \$35 per person, \$20 for students, \$5 discount for members. Add \$5 if you did not make a reservation.

**Reservations:** Make your reservation online at [www.sandiegoeologists.org](http://www.sandiegoeologists.org) no later than noon, **Monday, December 17<sup>th</sup>**.



### **2007 EXECUTIVE COMMITTEE**

**PRESIDENT** - David Bloom; *GDIT*; Ph: (619) 571-3470; [prez@sandiegoeologists.org](mailto:prez@sandiegoeologists.org)

**VICE PRESIDENT** - Sarah Gray; *University of San Diego*; Ph: (619) 260-4098; fax: (619)260-6874; [sgray@sandiego.edu](mailto:sgray@sandiego.edu)

**SECRETARY** – Scott Snyder; *Ninyo & Moore*; Ph: (858) 576-1000; [sdag2006@prodigy.net](mailto:sdag2006@prodigy.net)

**TREASURER** - Bryan Miller-Hicks; [geobry@aol.com](mailto:geobry@aol.com)

**PUBLICATIONS**-Lowell Lindsay; *Sunbelt Publications*; Ph:(619)258-4911 x111; fax:(619)258-4916; [llindsay@sunbeltpub.com](mailto:llindsay@sunbeltpub.com)

**WEBMASTER** – Carolyn Glockhoff; *Caro-Lion Enterprises*, Ph: (858) 549-3396; [carolyn@caro-lion.com](mailto:carolyn@caro-lion.com)

**AT LARGE**– John Teasely; *Spectrum Environmental Solutions*; Ph: (760) 839-2163; [jtea@cox.net](mailto:jtea@cox.net)

## DR. TOM DEMERE', SAN DIEGO NATURAL HISTORY MUSEUM

### Pleistocene Land Mammals of Western San Diego County: New Discoveries of Mastodons and Mammoths

The Pleistocene record of land mammals in western San Diego County has dramatically improved over the last 20 years due in part to the rapid urbanization of this region. Large scale grading activities have provided unprecedented opportunities to prospect for fossils in Quaternary sedimentary deposits previously obscured by modern soils and botanical overburden. Also important has been the opportunity to critically investigate the stratigraphy of the fossil-bearing rock units. As it turns out many of the major east-west modern drainages of the coastal plain preserve fluvial and alluvial deposits of Pleistocene age. Recovered fossil mammal assemblages include ground sloth, dire wolf, shrew, pocket mouse, pack rat, capybara, tapir, horse, llama, camel, deer, antelope, bison, mastodon, and mammoth. In 2007 new discoveries have included a partial skeleton of an American Mastodon from eastern Carlsbad and an isolated tusk of a Columbian Mammoth from downtown San Diego. The age of these proboscidean fossils is presently not accurately known, but preliminary analysis suggests dates of 200,000 to 500,000 years B.P.

---

---

### 2008 SDAG MEETING SCHEDULE - Mark your Calendars!

Meetings are usually on the 3<sup>rd</sup> Wednesday of the month but may change to accommodate speaker and meeting place schedules. Check here for updates!

January 16	Jim Bennett, County of San Diego Hydrogeologist, Groundwater recharge model of San Diego County
February 20	Steffi Schwabe, Clear Water Secrets: A Microscopic Discovery in the Cave Formation Story
March 19	TBD

#### President's Corner

- Our 65 attendees at November's joint meeting were not disappointed that Werner Landry, our speaker was unable to attend. Pat Thomas, Jim Labong, and Rob Hawk ably handled the presentation. We're now well informed on the new LID requirements for geotechnical projects.
- I write this the day after an incredibly informative and interesting "One-Day Wonder" to the geothermal fields of Imperial Valley. Alex Schreiner proved to be knowledgeable, passionate, opinionated, and funny. I hope we can persuade him to lead another trip in 2008. We dodged the rain, which turned much of Imperial Valley to mud the previous day. While cool, it was at first windy, then remained sunny the rest of the day.
- Join us for our 9th and last OSW of 2007 on Dec. 22 at 12:30pm at Scripps beach. We'll meet at the pier.
- Thank you SDAG members for making my 4 years as an officer rewarding and memorable. I hope you enjoyed SDAG activities as much as I have. I look forward to staying active with the group as past-president. Please give soon-to-be president Sarah Gray the support you've given me.

Dave Bloom

## ANNOUNCEMENTS

A special **Thank You** goes out to **David Bloom**, outgoing President of SDAG. Rarely do we have the good fortune to have a leader that is so very interested and excited about our chosen field of interest, and has the energy, organizational skills, and connections to enhance our experiences in SDAG and Geology. Dave is so enthusiastic that he is volunteering to help Sarah Gray with the first few months of her tenure, organizing speakers and meetings as she will be out of town from time to time. Dave has also jump started my field trip exploratory research even before I have been to the area. From the One Stop Wonders to the One Day Field Trips, Dave has elevated what it means to be President of SDAG. He will be continuing on in actively promoting SDAG and in other organizational needs we have, including incorporation, so you can rest assured Dave will not be disappearing on us!

Dave has truly brought our organization to a new level. Thanks Dave, for all of your hard work and enthusiasm.

~Scott Snyder, on behalf of SDAG.

---

---

The 2008 Officers elections will be held at the December Meeting. The nominees are as follows:

**President - Dr. Sarah Gray**

**Vice President Scott Snyder**

**Treasurer - Bryan Miller-Hicks**

**Secretary - Chuck Houser**

Write-ins are also welcome.

---

---

### ONE STOP WONDERS!

One Stop Wonder #9: **Scripps Beach**. Meet Saturday, December 22 at 12:30 pm at Scripps Pier in La Jolla for a walk north along cliffs showing excellent exposures of an Eocene marine fan deposit. We'll contemplate the curious occurrence of a Miocene basaltic-andesite dike. A -1.6 tide at 2:10 pm will make access easier.

---

---

**From the Coast Geological Society 2008 Desert Symposium Field Trip**: April 19-21, 2008, "Development of the Colorado River and its entry into the Salton Trough." The field trip will explore geographic extent of the Bouse Formation and contrast fresh water deposits with deposits containing marine fossils. Examine sediments at Anza-Borrego that indicate when the Colorado River entered the Salton Trough. Drive from eastern Mojave Desert pinon-juniper plateaus to the Sonoran vegetation of the Colorado Desert. Contact [wpresch@fullerton.edu](mailto:wpresch@fullerton.edu) more information.

**CGS Monthly Meeting (NEW LOCATION)** Tuesday November 20, 2007, beginning at 6:00 PM *Biedermann Hall at Sacred Heart Church - 10800 Henderson Road, Ventura, CA 93004* "Evolution of the Colorado River: Culmination of a Major Cenozoic Transformation of SW North American Drainage Patterns" presented by: Marty Grove, UCLA [www.coastgeologicalsociety.org](http://www.coastgeologicalsociety.org)

---

---

**National Association of Geoscience Teachers Far Western Section Spring 2008 Field Conference** *Geoscience Investigations in Northern San Diego County and Beyond: Student-Directed Explorations* **March 14-16, 2008**, hosted by Palomar, MiraCosta, and CSU San Marcos. We hope that you'll join us for an exploration of geoscience field trips in and around northern San Diego County. Unlike some NAGT field trips that explore remote locations, much of this conference will be held in an urban setting and highlight some of the field trips we do during half-day or full-day trips with students enrolled in our geology, geography, oceanography and Earth science classes. See [www.palomar.edu/earthscience](http://www.palomar.edu/earthscience) for more information.

---

---

## Rocks with Provenance Needed for a Reference Collection for Typing and Sourcing San Diego Co. Artifacts

The San Diego Archaeological Center and local archaeologists need a county-wide reference collection of local rocks from outcrops. The collection will be an important resource for archaeologists involved in typing and sourcing stone artifacts from the San Diego area.

Norrie Robbins, adjunct faculty in the Dept. of Geological Sciences at SDSU, is spearheading this volunteer effort. She notes that geologists use a much wider variety of descriptors for rocks than do archaeologists. One of the objectives of this project is to cross-reference archaeological categories with geological ones to help develop a mutually understandable terminology and to improve sourcing. Rock specimens in the reference collection will be identified by spatial coordinates and both geological and archaeological descriptors.

Please contact Norrie ([nrobbins@geology.sdsu.edu](mailto:nrobbins@geology.sdsu.edu), 619-303-9095) with any questions and to arrange pick up of specimens. Specimens may also be placed in her mailbox at SDSU or dropped off at the Center (please indicate Attention: Rebecca Nathan). In addition, Dr. Robbins or Dr. Tim Gross will be available at most meetings of the San Diego County Archaeological Society (SDCAS) and San Diego Association of Geologists (SDAG) to accept specimens. Building the reference collection is a long-term project. There is no time limit for making your contributions.

---

---

## 2007 CORPORATE SPONSORS - THANK YOU!!

Corporate sponsors provide a significant portion of SDAG's operating and scholarship budget. In addition to monthly recognition for your contribution, you are entitled to a free Internet "link" from [SDAG's Website](#). We also list Corporate Sponsors in our annual SDAG Field Trip Volume.

**Please consider SDAG sponsorship in 2008!**

A special thank you to **Ninyo & Moore** for sponsoring the preparation, duplication, and mailing of the newsletter for 2006 and 2007!

<a href="#">Dr. Richard Berry</a>	<a href="#">Geocon, Inc.</a>
<a href="#">H&amp;P Mobile Geochemistry</a>	<a href="#">Dr. Sarah Gray - University of San Diego</a>
<a href="#">Sherry Bloom</a> , Coldwell Banker Real Estate	David Bloom - <a href="#">General Dynamics Information Technology</a>
Joe Coronas, <a href="#">City of San Diego</a>	Lowell Lindsay, <a href="#">Sunbelt Publications</a>
Dr. Margaret Eggers <a href="#">Eggers Environmental, Inc.</a>	Phil Farquharson, <a href="#">CG-Squared Productions</a>
Sue Tanges, Southland Geotechnical	<a href="#">Julie Moore, SPL Laboratories</a>
William J. Elliott, Engineering Geologist	<a href="#">Ninyo &amp; Moore</a>
<a href="#">Dr. Monte Marshall</a>	<a href="#">Dr. Anne Sturz</a>
<a href="#">Anderson Drilling</a>	<a href="#">GeoSoils, Inc.</a>
Katherine Freese	David and Jan Steller
<a href="#">Geo-tech Imagery</a> , Woodrow Higdon	Carole L. Ziegler
<a href="#">Carolyn Glockhoff</a> , Caro-Lion Enterprises	Monte and Diane Murbach
<a href="#">Southwest Geophysics, Inc.</a>	

## JOB OPENINGS!

**Layne GeoSciences**, a division of *Layne Christensen Company*, the nation's largest groundwater resource development contractor, is seeking candidates for a *Senior Level Hydrogeologist* position. This position will be based in our Fontana, CA facility. Qualified candidates will possess:

- BS/MS in Geology, Hydrogeology, or Engineering Geology with emphasis on groundwater resources
- Minimum 8-10 years of experience in performing hydrogeological studies (e.g., groundwater exploration and/or water resource development, production well installation and design, wellfield design, surface and borehole (geophysics))
- Excellent written and verbal communication skills, good computer skills

The successful candidate will be involved in hydrogeological studies at project locations primarily in the southwestern US. Candidate may have periodic travel requirements and must be a motivated, self-starting individual looking for a challenging, key position in an expanding organization.

Qualified candidates are encouraged to send a resume to: *Layne GeoSciences* ATTN: Mr. Tony Morgan *Manager-West Coast Operations* 11001 Etiwanda Avenue Fontana, CA 92337, 909-390-2833 909-390-6097 FAX

Resumes should be submitted by email to [tmorgan@laynechristensen.com](mailto:tmorgan@laynechristensen.com)

We are a drug-free and smoke-free workplace. EOE/M/F/D/V

---

---

**Geologist/Hydrogeologist II - Brown and Caldwell**

Evaluate, select, and apply standard geological techniques, procedures, and criteria to make adaptations and modifications. Work on assignments with clear and specified objectives. Investigate limited number of variables. Direct field crews drilling bore holes and collect samples of rocks and soil for chemical analysis.

**Qualifications:** MS degree or BS degree and 2-3 years of professional geological or hydrogeological experience.

**Contact Candy Engelstad**, HR/Administrative Manager, Brown and Caldwell, [cengelstad@brwncald.com](mailto:cengelstad@brwncald.com)  
Tel: (858) 514-8822 Fax: (858) 514-8833

---

---

URS Corporation, a nationwide, multidisciplinary consulting firm and the largest design firm in the country, has a strong project backlog in San Diego County in the transportation and water resources markets. We are seeking qualified candidates for the following positions for our San Diego office:

**Engineering Geologist** (Requisition #URS16201): Geologist/Engineering Geologist with 0 to 5 years of experience in consulting engineering firm; preferably with master's degree. Responsible for supervising field explorations, geologic mapping, and report preparation. Should be experienced in logging borings in soil and rock, knowledge of Caltrans investigation procedures a plus.

**Geotechnical Engineer** (Requisition #URS24208): Civil/Geotechnical Engineer with 0 to 5 years of experience in consulting engineering firm; preferably with master's degree. Responsible for planning field and laboratory programs, engineering analyses, and report preparation. Strong analytical skills and communication skills a must. URS is an Equal Opportunity Employer and strongly supports diversity in our work force (M/F/V/D). We offer competitive salaries and a comprehensive benefits package. For immediate consideration, please submit to [mike\\_blackmore@urscorp.com](mailto:mike_blackmore@urscorp.com) or apply on-line under the Careers section of our website ([www.urscorp.com](http://www.urscorp.com)) using the requisition number shown in parentheses above.

---

---

**Tetra Tech EC**, a world leader in environmental engineering and consulting, is seeking an **Entry Level Geologist in our San Diego, CA office.**

The qualified candidate will have a Bachelor of Science degree in Geology, hydrogeology, or related field with 0-3 years experience. Primary responsibility will be to assist senior personnel in the planning and execution of projects. The chosen candidate will learn a variety of field sampling and drilling methods for site investigation and remediation projects and perform the acquisition of samples (soil and groundwater) in the field. Good analytical and writing skills required. Up to 50% of time may be in the field on project sites mostly in the Bay area.

Tetra Tech EC, Inc. is an Equal Opportunity Employer and we value team-oriented workplace and workforce diversity. We invite resumes from all interested parties including women, minorities, veterans and persons with disabilities. Tetra Tech offers their employees a comprehensive compensation package and the opportunity to work on large scale government projects.

Candidates who are interested in joining our dynamic team should submit a resume to Tetra Tech EC at [northwest.web@tteci.com](mailto:northwest.web@tteci.com). Resumes should include salary requirements. Please visit our website at [www.tteci.com](http://www.tteci.com) or [www.tetratech.com](http://www.tetratech.com) to see the array of services that we provide and exciting projects we are currently working on.

---

---



Professional Service Industries, Inc. is looking for enthusiastic **Project Level Geologists and Geotechnical Engineers** for its San Diego office (0-10 years experience) to fill immediate opportunities. Our current high-profile projects will help build a strong resume. Interested candidates please contact Md. Shaheed at 858-455-0544 or email resume to [md.shaheed@psiusa.com](mailto:md.shaheed@psiusa.com)

---

---

**TN & Associates, Inc.** specializes in environmental services, natural resources, infrastructure engineering, and construction services. Our San Diego office is currently looking to fill the following positions:

**Staff Geologist:** Geologist to perform office and field assignments for environmental site assessment and remediation projects. Position will involve soil borings, monitoring well installations, soil and water sampling, historical research investigations, data management, construction documentation and construction QA/QC, and report writing. Ability to adapt to both office and field environments a must. OSHA 40-hour training a plus. Periodic travel is required.

**Project Geologist:** Geologist with 3 to 7 years experience required in conducting all aspects of field investigations including limited site assessments, multi-task remedial investigations and remedial actions with a strong emphasis in technical writing skills. The ideal candidate will have experience in data analysis and reporting. PG registration and OSHA 40-hour training a plus. Work will entail some fieldwork and travel, mainly within California. Experience with government projects (DOD, USACE, AFCEE, Navy and USEPA) landfills and stormwater engineering/compliance a plus.

We offer a competitive salary, benefits package and friendly working environment. Equal Opportunity Employer. Please mail or fax your resume and letter of interest to: T N & Associates, Inc., 2247 San Diego Avenue, Suite 238, San Diego CA 92110, fax 619-291-8100.

## **JOB OPENINGS!**

CDM is currently looking to hire a fulltime **Geologist** for our Irvine, CA office.

As a member of this team, you would contribute to CDM's mission by:

- Planning and conducting work requiring judgment in the independent evaluation, selection, and substantial adaptation and modification of standard techniques, procedures, and criteria. Planning, scheduling, conducting, or coordinating detailed phases of work in a part of a major project or in a total project of moderate scope. Devising new approaches to problems encountered. Coordinating various technical aspects of work. Receiving technical guidance on unusual or complex problems and supervisory approval on proposed plans for projects Acting as a mentor for lower level employees. Possibly supervising the work of a few geologists/engineers who are assisting on assigned work. Establishing and monitoring budgets to assess profitability. Managing tasks or projects as appropriate to meet the technical and budget objectives of the project. Field work such as mapping, well installation oversight and sampling. Development of technical reports documenting work. Participating to a limited degree in new business development

Requirements

- 5 - 7 minimum years of experience since B.S. Registration as a licensed Professional Geologist. Broad knowledge of precedents, principles and practices as a Geologist. Good writing and oral skills.

CDM has consistently earned industry recognition for our innovative project solutions. Recognition by respected professional organizations, such as the American Academy of Environmental Engineers, the American Council of Engineering Companies, and the Design-Build Institute of America, is a testament to CDM's delivery of exceptional service and the right total solutions for each client's needs. We are an equal opportunity employer.

Qualified candidates should send resumes to [mcshefferylj@cdm.com](mailto:mcshefferylj@cdm.com). Please make reference to job ID# 7044BR when applying.

### **Principal Hydrogeologist**

Looking to make a real impact at work? Ready to "Never be bored"? Natural born leader? Work for an industry leader.....Join MACTEC.

**MACTEC Engineering and Consulting, Inc.** is a leading consulting firm providing engineering, environmental and remedial construction services to public and private clients worldwide. Operating with over 3,000 employees in 100 offices nationwide with a global reach, MACTEC is currently ranked 31st among *Engineering News-Record's* top 500 design firms.

**MACTEC's** Irvine office is in search of a **Principal Hydrogeologist** to lead the geological and hydrogeological efforts, manage a team of committed technical staff members and advance business development opportunities within a variety of clients and projects. This is an excellent opportunity for the "natural born leader" who wants to utilize their technical and leadership skills!

#### **Scope of Role:**

1. Provides hydrogeological guidance and support for soil and groundwater remediation.
2. Develops and presents new approaches and services within environmental consulting market
3. Assumes project management roles and leads site investigation efforts
4. Conducts fate and transport modeling, pump tests and capture zone analysis
5. Develops site specific hydrogeological model.
6. Prepares and deliver technical reports, communications and presentations.

#### **Key Qualifications:**

1. BS/MS/PhD (Geology/Hydrogeology)
2. Min 10 years experience, must have consulting experience as well
3. Must have groundwater modeling experience, CA certification preferred
4. PG, CHG registration in CA required
5. Excellent communication and leadership skills

**MACTEC's benefit offerings include health, dental, vision, short and long term disability, life insurance, paid vacation, sick, holidays, a 401(k) match and tuition reimbursement. More information can be found on our website at [www.MACTEC.com](http://www.MACTEC.com)**

#### **Interested?**

Please apply today via our website: [www.MACTEC.com/](http://www.MACTEC.com/) - click on Careers / CA- Irvine



## JOB OPENINGS!

Since 1986, clients have turned to **Ninyo & Moore** for innovative solutions to complex geotechnical and environmental challenges. As a leading geotechnical and environmental sciences engineering and consulting firm, Ninyo & Moore provides specialized services to clients in both the public and private sectors. With offices in Colorado, California, Nevada and Arizona, the firm is fully committed to being responsive, cost-efficient, and thorough in meeting its clients' project needs and objectives.

Ninyo & Moore Geotechnical & Environmental Sciences Consultants has immediate employment opportunities in our Denver, Irvine, Las Vegas, Oakland, Phoenix, and San Diego offices. Positions include Engineers and Geologists of all levels, including **Staff Engineers and Geologists, Project Engineers and Geologists, Staff and Project Environmental Scientists, Chief Geotechnical Engineer, and Construction Field and Laboratory Technicians.**

The successful candidates should have a BS or MS degree for staff-level positions and five years or more of experience for project to senior-level positions. The candidates should be detailed oriented and have excellent verbal and written communication skills. Professional Engineer (PE) and/or Professional Geologist (PG) registrations preferred.

Ninyo & Moore offers a competitive salary, excellent benefits and an opportunity for professional growth. Please visit our website for complete and detailed job descriptions and to submit your resume in confidence at [www.ninyoandmoore.com/careers](http://www.ninyoandmoore.com/careers) or mail to our corporate office at 5710 Ruffin Road, San Diego, CA 92123, Attention: Human Resources. EOE



TerraPacific Consultants, Inc. is a San Diego based geotechnical consulting firm working on projects throughout the southwest. We provide consulting services for private, military and public works projects. In addition, we perform forensic engineering investigations and provide oversight during foundation repairs. We are seeking motivated Engineers and Geologists who are interested in finding solutions to challenging geotechnical problems.

Field work and out of town travel will be required on a regular basis throughout California, Nevada, Arizona and New Mexico. This position demands an organized self-starter with "hands-on" management ability and good time management skills. Please visit our web site at [www.terrapac.net](http://www.terrapac.net).

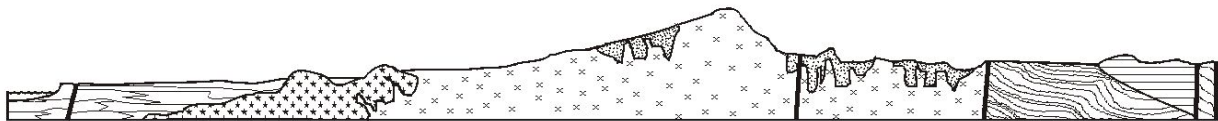
**Senior Geotechnical Engineer** - Position responsibilities include project management, collecting field data, analysis, report writing, and client communication. Qualified candidates must be a licensed PE or GE and have a minimum of 8 years experience. Geotechnical forensic experience is a plus.

**Project Geotechnical Engineer** - Position responsibilities include project management, collecting field data, analysis, report writing, and client communication. Qualified candidates must be a licensed PE and have a minimum of 5 years experience. Geotechnical forensic experience is also a plus.

**Staff Engineer/Geologist** - We are looking for honest, hard working, technically minded graduates to perform subsurface investigations, collect field data, perform geotechnical analysis, and write reports. Construction inspections and oversight will also be required. Some experience in geotechnical investigations is preferred however recent graduates will be considered.

The right, qualified, independent and hard-working individual will be offered an excellent salary (commensurate with their experience), profit sharing/401K plan; company sponsored insurance program, and bonuses. If you are interested in pursuing quality in your life and your career please submit a resume and cover letter to: TerraPacific Consultants, Inc., 12245 World Trade Drive, Suite G, San Diego, CA 92128; or by fax to 858-521-1199; or by e-mail to [jimg@terrapac.net](mailto:jimg@terrapac.net).

---



# SAN DIEGO ASSOCIATION OF GEOLOGISTS

[www.sandiegoeologists.org](http://www.sandiegoeologists.org)

## 2008 MEMBERSHIP FORM

NAME: \_\_\_\_\_

Please type or print clearly, and check your chosen delivery address below.

Home Address: \_\_\_\_\_

Include in directory \_\_\_\_\_  
\_\_\_\_\_

Work Address: \_\_\_\_\_

Include in directory \_\_\_\_\_  
\_\_\_\_\_

*Please include company or other affiliation*

Preferred Mailing Address (Check One):  Home  Work

E-mail Address: \_\_\_\_\_

Website: \_\_\_\_\_

Field(s) of Interest: \_\_\_\_\_  
\_\_\_\_\_

Phone: Home: ( ) \_\_\_\_\_ Work: ( ) \_\_\_\_\_ Cell: ( ) \_\_\_\_\_

**NEW POLICY:** Your membership dues include email delivery of the monthly newsletter. If you wish to receive a hardcopy of the newsletter through US Mail, please add \$10.00 to your membership dues.

Dues:	_____ Student Member (email delivery only)	\$ 5.00
(check choice)	_____ Regular Member (email delivery only)	\$ 25.00
	_____ Subscription to hardcopy newsletter	\$ 10.00
	_____ Corporate Sponsor (email delivery only)	\$100.00

*(Name as you would like it to appear in guidebook and website)*

New Member  Continuing Member

Date: \_\_\_\_\_ Check for change of mailing address:

Please enclose a check payable to SDAG, and mail to:

San Diego Association of Geologists  
PMB 157  
5694 Mission Center Road, Suite 602  
San Diego, CA 92108



**San Diego Association of Geologists  
c/o Scott Snyder  
Ninyo & Moore  
5710 Ruffin Road  
San Diego, CA 92123**