

SAN DIEGO ASSOCIATION OF GEOLOGISTS

www.sandiegoeologists.org

SDAG MEETING ANNOUNCEMENT

Wednesday, November 14, 2007 (note earlier week)

REVIEW OF DRAFT GUIDELINES FOR GEOTECHNICAL REPORTS

presented by

Werner Landry, City of San Diego

Where: VINEYARD Room (southern end of MVCC) **SEE MAP, PAGE 2**
Marina Village Conference Center
1936 Quivira Way, San Diego, CA 92109

When: 5:30 pm – Social Hour
6:15 pm – Dinner
7:15 pm – Program

Directions: FROM INTERSTATE 5: Take the SEA WORLD DRIVE exit. From SEA WORLD DRIVE, take WEST MISSION BAY DRIVE on your right. When you see the large green sign that says QUIVIRA ROAD, get in the farthest left of the two left turn lanes. Turn left, go one very short block and turn left again. Drive about one half mile and MARINA VILLAGE will be on your right.

FROM INTERSTATE 8: Take the WEST MISSION BAY DRIVE exit to the right. You will be on INGRAHAM STREET for a short distance from which you will take the next exit marked WEST MISSION BAY DRIVE on your right. When you see the large green sign that says QUIVIRA ROAD, get in the farthest left of the two left turn lanes. Turn left, go one very short block and turn left again. Drive about one half mile and MARINA VILLAGE will be on your right.

Dinner: Thanksgiving Buffet: Ham and turkey main course. Apple cobbler dessert. Beverage station. Cash bar.

Cost: \$30 per person, \$10 for students. Add \$5 if you did not make a reservation.

Reservations: Make your reservation **online** at www.sandiegoeologists.org **no later than noon, Monday, November 12th**.

2007 EXECUTIVE COMMITTEE

PRESIDENT - David Bloom; *GDIT*; Ph: (619) 571-3470; prez@sandiegoeologists.org

VICE PRESIDENT- Sarah Gray; *University of San Diego*; Ph: (619) 260-4098; fax: (619)260-6874; sgray@sandiego.edu

SECRETARY – Scott Snyder; *Ninyo & Moore*; Ph: (858) 576-1000; sdag2006@prodigy.net

TREASURER - Bryan Miller-Hicks; geobry@aol.com

PUBLICATIONS-Lowell Lindsay; *Sunbelt Publications*; Ph:(619)258-4911 x111; fax:(619)258-4916; llindsay@sunbeltpub.com

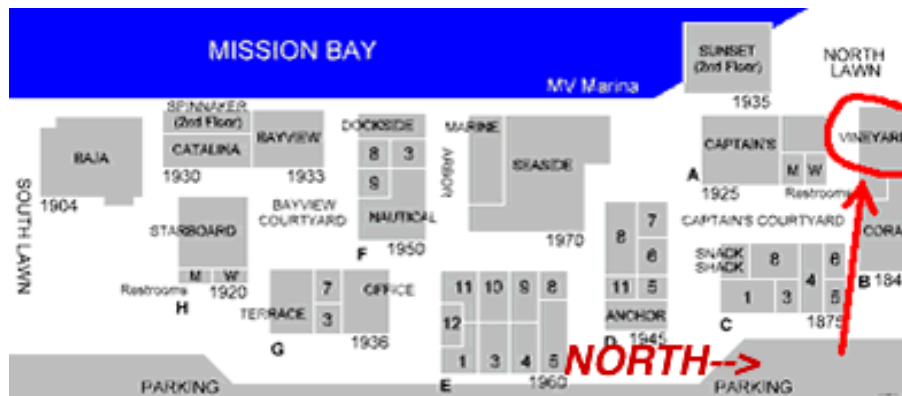
WEBMASTER – Carolyn Glockhoff; *Caro-Lion Enterprises*, Ph: (858) 549-3396; carolyn@caro-lion.com

AT LARGE– John Teasely; *Spectrum Environmental Solutions*; Ph: (760) 839-2163; jtea@cox.net

WERNER LANDRY, SENIOR ENGINEERING GEOLOGIST, CITY OF SAN DIEGO

Review of Draft Guidelines for Geotechnical Reports

It has been almost 20 years since the original city's guidelines were produced. These new guidelines are intended to update the existing report requirements based partly upon the profession's growth since 1988 and to put more emphasis upon the expertise of the geotechnical consultants. The aspects evaluated during an investigation should be directed towards the planned development for the site, with direction of the field work based upon preliminary findings during the early stages of investigation. It is staff's intention to reduce the cookbook approach to geotechnical investigations and to provide a comprehensive list of options to consider during the field work and report writing. It is expected that all potentially significant geotechnical hazards at the site will be identified and, if warranted, options for mitigation provided. The final level of investigation is up to the professional consultant.



2007 SDAG MEETING SCHEDULE - Mark your Calendars!

Meetings are usually on the 3rd Wednesday of the month but may change to accommodate speaker and meeting place schedules. Check here for updates!

December 19	SDAG Annual Holiday Meeting
January 16	Jim Bennett, County of San Diego Hydrogeologist, Groundwater recharge model of San Diego County
February 20	Wes Danskin, USGS Water Resources Division, Coastal San Diego groundwater

President's Corner

- Thanks go to ASCE-geotech and AEG-San Diego for organizing the triple-joint meeting last month. Mark Johnsson and Walt Crampton gave the audience of 97 what we came for. It's good to hear from staff of the
- Coastal Commission what their looking for in a technical report, and Walt's Pump Station 35 case study shows the importance of performing a site specific investigation.
- We have had great success this year with our One-Stop Wonder "mini" field trips. We completed eight so far this year, with another in December. Those who've been going know we're learning something interesting, and having fun at the same time! These are easy. Just show up!
- We also are going on a one-day geothermal field trip with the knowledgeable Alex Schriener whom I've been in contact with since the 2005 Geothermal Resources Council annual meeting in San Diego.
- Corporate Sponsors help to fund our student scholarships and other SDAG activities. Please consider supporting us in 2008.
- And remember to renew your regular memberships for 2008. You get all the great benefits you've always received including discounts on SDAG logo merchandise and meeting fees.

Dave Bloom

ANNOUNCEMENTS

ANNUAL SDAG FIELD TRIP - ANOTHER HUGE SUCCESS

2007 Annual Field Trip "From Water to Wine" Coastal Development and Groundwater in the Ensenada and Guadalupe Valley areas, Baja California, Mexico. Oct. 13-14, 2007. **Sarah Gray** organized the best field trip yet. We traveled together in a luxurious motor coach along the rugged coast Scenic Road to Ensenada.

We observed a landslide and marveled that a two billion dollar residential development and hotel is now beginning construction on an ancient landslide. (This might be a bad idea. See below.) Dr. Thomas Kretzschmarr gave us a tour of the CICESE offices, then the Guadalupe Valley. River gravel mining down to the water table has decreased groundwater quality as TDS increased from evaporation. Without significant recharge this year, overdraft from pumping wells that supply 40% of the city of Ensenada may deplete the aquifer storage of the Guadalupe Valley within a year.

We enjoyed wine tasting, then the hospitality, stories, and traditional dancing at our camp at San Antonio de Necua, a Kumeyaay village. The hike the next day to the hot springs in Agua Caliente creek was one of those hidden treasures. We didn't have time to explore the solution caves above the waterfall. We'll leave that for another time. Thomas gave a lecture over lunch at the vineyard terrace at L.A. Cetto winery. The Lindsays came home with two Afghans. The puppies had their papers and crossed the border without incident.

ONE STOP WONDERS!

One Stop Wonder #9: **Scripps Beach**. Meet Saturday, December 22 at 12:30 pm at Scripps Pier in La Jolla for a walk north along cliffs showing excellent exposures of an Eocene marine fan deposit. We'll contemplate the curious occurrence of a Miocene basaltic-andesite dike. A -1.6 tide at 2:10 pm will make access easier.

Mini Field Trip: **December 1**, Saturday. Meet at 8:00 am at the Desert View Tower, In-Ko-Pah Park Road exit off I-8, at the San Diego-Imperial County line. Alex Schreiner will lead a trip to the **Imperial Valley Geothermal Field** where we'll see the drilling of new geothermal wells, tour a geothermal plant, and see the mud pots, rhyolite dome, and other spreading center features of the southern Salton Sea. Return to San Diego or stay and camp at the southern Coyote Mountains, where Michael Nauss will lead a tour of **Fossil Canyon**. RSVP prez@sandiegogeologists.org if you're going so we know how many handouts to make.

Recap

OSW #7: November 3. **Rose Canyon fault zone** through Old Town. SDAG showed up at San Diego's first cigar store in Old Town, with a record force of 27. Proprietor Geoffrey Mogilner treated us to a historical, archeological, and geological overview, aided by historic maps and photographs. An 1862 photograph showed what appeared to be surface rupture through the slope east of Juan Street. Geoff immediately sold out his four CD copies of his monograph, which includes high quality images of the historic maps and photos. We took a walking tour to the bluff over the San Diego River (now the Old Town trolley station), then to the base of the Presidio Hill, the most historic site in California. Geoff said we stood at the site of Cosoy, a Kumeyaay village where a spring yields water from the hill. We walked south along the golf course where Bob Stroh provided an account of his recent trenching, Monte Murbach explained why trenching hasn't been done in the golf course, and Monte Marshall added to the discussion with some of his findings from gravity transects. We concluded the tour where Bob trenched at Harney and Juan Streets, while describing previous trench logs Ernie Artim made during City utility line upgrades. Carole Ziegler most generously provided lunch at her home above Old Town.

OSW #8: November 4. **Mount Soledad Landslide**. Even on short notice, we had 75 people come out for a close look at the October 3 landslide that severely damaged the roadway and several adjacent houses on Soledad Mountain Road and Desert View Drive. Rob Hawk gave an overview of the landslide and current work to repair the road. Thanks to Rob for arranging for access to the slide.

The **2007 Annual Meeting of the Association of Environmental and Engineering Geologists (AEG)** will be held in the Los Angeles area at the Sheraton Universal Hotel (near Universal Studios). This will be the 50th Anniversary of the founding of the AEG and the meeting theme will revolve around that idea as well as celebrating California Geology. The technical program will focus on a variety of tunnel, fault hazard evaluations, marine geology, and coastal processes, as well as classic engineering geology, environmental geology, and groundwater topics. The 2007 Annual Meeting Planning Committee is currently scheduling several technical sessions, special symposia, short courses, and a teachers' workshop. These will provide opportunities for geologists and other professionals to share in the state-of-the-art and practices. In addition several field trips are planned to be held in conjunction with the meeting. Please place 2007 AEG convention on your calendars September 24 through 28, 2007.

From the Coast Geological Society 2008 Desert Symposium Field Trip: April 19-21, 2008, "Development of the Colorado River and its entry into the Salton Trough." The field trip will explore geographic extent of the Bouse Formation and contrast fresh water deposits with deposits containing marine fossils. Examine sediments at Anza-Borrego that indicate when the Colorado River entered the Salton Trough. Drive from eastern Mojave Desert pinon-juniper plateaus to the Sonoran vegetation of the Colorado Desert. Contact wpresch@fullerton.edu more information.

CGS Monthly Meeting (NEW LOCATION) Tuesday November 20, 2007, beginning at 6:00 PM *Biedermann Hall at Sacred Heart Church - 10800 Henderson Road, Ventura, CA 93004* "Evolution of the Colorado River: Culmination of a Major Cenozoic Transformation of SW North American Drainage Patterns" presented by: Marty Grove, UCLA www.coastgeologicalsociety.org

National Association of Geoscience Teachers Far Western Section Spring 2008 Field Conference *Geoscience Investigations in Northern San Diego County and Beyond: Student-Directed Explorations* **March 14-16, 2008**, hosted by Palomar, MiraCosta, and CSU San Marcos. We hope that you'll join us for an exploration of geoscience field trips in and around northern San Diego County. Unlike some NAGT field trips that explore remote locations, much of this conference will be held in an urban setting and highlight some of the field trips we do during half-day or full-day trips with students enrolled in our geology, geography, oceanography and Earth science classes. See www.palomar.edu/earthscience for more information.

Rocks with Provenance Needed for a Reference Collection for Typing and Sourcing San Diego Co. Artifacts

The San Diego Archaeological Center and local archaeologists need a county-wide reference collection of local rocks from outcrops. The collection will be an important resource for archaeologists involved in typing and sourcing stone artifacts from the San Diego area.

Norrie Robbins, adjunct faculty in the Dept. of Geological Sciences at SDSU, is spearheading this volunteer effort. She notes that geologists use a much wider variety of descriptors for rocks than do archaeologists. One of the objectives of this project is to cross-reference archaeological categories with geological ones to help develop a mutually understandable terminology and to improve sourcing. Rock specimens in the reference collection will be identified by spatial coordinates and both geological and archaeological descriptors.

Please contact Norrie (nrobbins@geology.sdsu.edu, 619-303-9095) with any questions and to arrange pick up of specimens. Specimens may also be placed in her mailbox at SDSU or dropped off at the Center (please indicate Attention: Rebecca Nathan). In addition, Dr. Robbins or Dr. Tim Gross will be available at most meetings of the San Diego County Archaeological Society (SDCAS) and San Diego Association of Geologists (SDAG) to accept specimens. Building the reference collection is a long-term project. There is no time limit for making your contributions.

2007 CORPORATE SPONSORS - THANK YOU!!

Corporate sponsors provide a significant portion of SDAG's operating and scholarship budget. In addition to monthly recognition for your contribution, you are entitled to a free Internet "link" from [SDAG's Website](#). We also list Corporate Sponsors in our annual SDAG Field Trip Volume. **Please consider SDAG sponsorship in 2008!**

A special thank you to **Ninyo & Moore** for sponsoring the preparation, duplication, and mailing of the newsletter for 2006 and 2007!

Dr. Richard Berry	Geocon , Inc.
H&P Mobile Geochemistry	Dr. Sarah Gray - University of San Diego
Sherry Bloom , Coldwell Banker Real Estate	David Bloom - General Dynamics Information Technology
Joe Coronas, City of San Diego	Lowell Lindsay, Sunbelt Publications
Dr. Margaret Eggers Eggers Environmental, Inc.	Phil Farquharson, CG-Squared Productions
Sue Tanges, Southland Geotechnical	Julie Moore, SPL Laboratories
William J. Elliott, Engineering Geologist	Ninyo & Moore
Dr. Monte Marshall	Dr. Anne Sturz
Anderson Drilling	GeoSoils, Inc.
Katherine Freese	David and Jan Steller
Geo-tech Imagery , Woodrow Higdon	Carole L. Ziegler
Carolyn Glockhoff , Caro-Lion Enterprises	Monte and Diane Murbach
Southwest Geophysics, Inc.	

JOB OPENINGS!

Geologist/Hydrogeologist II - Brown and Caldwell

Evaluate, select, and apply standard geological techniques, procedures, and criteria to make adaptations and modifications. Work on assignments with clear and specified objectives. Investigate limited number of variables. Direct field crews drilling bore holes and collect samples of rocks and soil for chemical analysis.

Qualifications: MS degree or BS degree and 2-3 years of professional geological or hydrogeological experience.

Contact Candy Engelstad, HR/Administrative Manager, Brown and Caldwell, cengelstad@brwnaald.com
Tel: (858) 514-8822 Fax: (858) 514-8833

URS Corporation, a nationwide, multidisciplinary consulting firm and the largest design firm in the country, has a strong project backlog in San Diego County in the transportation and water resources markets. We are seeking qualified candidates for the following positions for our San Diego office:

Engineering Geologist (Requisition #URS16201): Geologist/Engineering Geologist with 0 to 5 years of experience in consulting engineering firm; preferably with master's degree. Responsible for supervising field explorations, geologic mapping, and report preparation. Should be experienced in logging borings in soil and rock, knowledge of Caltrans investigation procedures a plus.

Geotechnical Engineer (Requisition #URS24208): Civil/Geotechnical Engineer with 0 to 5 years of experience in consulting engineering firm; preferably with master's degree. Responsible for planning field and laboratory programs, engineering analyses, and report preparation. Strong analytical skills and communication skills a must. URS is an Equal Opportunity Employer and strongly supports diversity in our work force (M/F/V/D). We offer competitive salaries and a comprehensive benefits package. For immediate consideration, please submit to mike_blackmore@urscorp.com or apply on-line under the Careers section of our website (www.urscorp.com) using the requisition number shown in parentheses above.

Professional Service Industries, Inc. is looking for enthusiastic **Project Level Geologists and Geotechnical Engineers** for its San Diego office (0-10 years experience) to fill immediate opportunities. Our current high-profile projects will help build a strong resume. Interested candidates please contact Md. Shaheed at 858-455-0544 or email resume to

md.shaheed@psiusa.com

CDM is currently looking to hire a fulltime Geologist for our Irvine, CA office.

As a member of this team, you would contribute to CDM's mission by:

- Planning and conducting work requiring judgment in the independent evaluation, selection, and substantial adaptation and modification of standard techniques, procedures, and criteria. Planning, scheduling, conducting, or coordinating detailed phases of work in a part of a major project or in a total project of moderate scope. Devising new approaches to problems encountered. Coordinating various technical aspects of work. Receiving technical guidance on unusual or complex problems and supervisory approval on proposed plans for projects Acting as a mentor for lower level employees. Possibly supervising the work of a few geologists/engineers who are assisting on assigned work. Establishing and monitoring budgets to assess profitability. Managing tasks or projects as appropriate to meet the technical and budget objectives of the project. Field work such as mapping, well installation oversight and sampling. Development of technical reports documenting work. Participating to a limited degree in new business development

Requirements

- 5 - 7 minimum years of experience since B.S. Registration as a licensed Professional Geologist. Broad knowledge of precedents, principles and practices as a Geologist. Good writing and oral skills.

CDM has consistently earned industry recognition for our innovative project solutions. Recognition by respected professional organizations, such as the American Academy of Environmental Engineers, the American Council of Engineering Companies, and the Design-Build Institute of America, is a testament to CDM's delivery of exceptional service and the right total solutions for each client's needs. We are an equal opportunity employer.

Qualified candidates should send resumes to mcshefferylj@cdm.com. Please make reference to job ID# 7044BR when applying.

Principal Hydrogeologist

Looking to make a real impact at work? Ready to "Never be bored"? Natural born leader? Work for an industry leader.....Join MACTEC.

MACTEC Engineering and Consulting, Inc. is a leading consulting firm providing engineering, environmental and remedial construction services to public and private clients worldwide. Operating with over 3,000 employees in 100 offices nationwide with a global reach, MACTEC is currently ranked 31st among *Engineering News-Record's* top 500 design firms.

MACTEC's Irvine office is in search of a **Principal Hydrogeologist** to lead the geological and hydrogeological efforts, manage a team of committed technical staff members and advance business development opportunities within a variety of clients and projects. This is an excellent opportunity for the "natural born leader" who wants to utilize their technical and leadership skills!

Scope of Role:

1. Provides hydrogeological guidance and support for soil and groundwater remediation.
2. Develops and presents new approaches and services within environmental consulting market
3. Assumes project management roles and leads site investigation efforts
4. Conducts fate and transport modeling, pump tests and capture zone analysis
5. Develops site specific hydrogeological model.
6. Prepares and deliver technical reports, communications and presentations.

Key Qualifications:

1. BS/MS/PhD (Geology/Hydrogeology)
2. Min 10 years experience, must have consulting experience as well
3. Must have groundwater modeling experience, CA certification preferred
4. PG, CHG registration in CA required
5. Excellent communication and leadership skills

MACTEC's benefit offerings include health, dental, vision, short and long term disability, life insurance, paid vacation, sick, holidays, a 401(k) match and tuition reimbursement. More information can be found on our website at www.MACTEC.com

Interested?

Please apply today via our website: www.MACTEC.com/ - click on Careers / CA- Irvine

TN & Associates, Inc. specializes in environmental services, natural resources, infrastructure engineering, and construction services. Our San Diego office is currently looking to fill the following positions:

Staff Geologist: Geologist to perform office and field assignments for environmental site assessment and remediation projects. Position will involve soil borings, monitoring well installations, soil and water sampling, historical research investigations, data management, construction documentation and construction QA/QC, and report writing. Ability to adapt to both office and field environments a must. OSHA 40-hour training a plus. Periodic travel is required.

Project Geologist: Geologist with 3 to 7 years experience required in conducting all aspects of field investigations including limited site assessments, multi-task remedial investigations and remedial actions with a strong emphasis in technical writing skills. The ideal candidate will have experience in data analysis and reporting. PG registration and OSHA 40-hour training a plus. Work will entail some fieldwork and travel, mainly within California. Experience with government projects (DOD, USACE, AFCEE, Navy and USEPA) landfills and stormwater engineering/compliance a plus.

We offer a competitive salary, benefits package and friendly working environment. Equal Opportunity Employer. Please mail or fax your resume and letter of interest to: T N & Associates, Inc., 2247 San Diego Avenue, Suite 238, San Diego CA 92110, fax 619-291-8100.

Since 1986, clients have turned to **Ninyo & Moore** for innovative solutions to complex geotechnical and environmental challenges. As a leading geotechnical and environmental sciences engineering and consulting firm, Ninyo & Moore provides specialized services to clients in both the public and private sectors. With offices in Colorado, California, Nevada and Arizona, the firm is fully committed to being responsive, cost-efficient, and thorough in meeting its clients' project needs and objectives.

Ninyo & Moore Geotechnical & Environmental Sciences Consultants has immediate employment opportunities in our Denver, Irvine, Las Vegas, Oakland, Phoenix, and San Diego offices. Positions include Engineers and Geologists of all levels, including **Staff Engineers and Geologists, Project Engineers and Geologists, Staff and Project Environmental Scientists, Chief Geotechnical Engineer, and Construction Field and Laboratory Technicians.**

The successful candidates should have a BS or MS degree for staff-level positions and five years or more of experience for project to senior-level positions. The candidates should be detailed oriented and have excellent verbal and written communication skills. Professional Engineer (PE) and/or Professional Geologist (PG) registrations preferred.

Ninyo & Moore offers a competitive salary, excellent benefits and an opportunity for professional growth. Please visit our website for complete and detailed job descriptions and to submit your resume in confidence at www.ninyoandmoore.com/careers or mail to our corporate office at 5710 Ruffin Road, San Diego, CA 92123, Attention: Human Resources. EOE



TerraPacific Consultants, Inc. is a San Diego based geotechnical consulting firm working on projects throughout the southwest. We provide consulting services for private, military and public works projects. In addition, we perform forensic

engineering investigations and provide oversight during foundation repairs. We are seeking motivated Engineers and Geologists who are interested in finding solutions to challenging geotechnical problems.

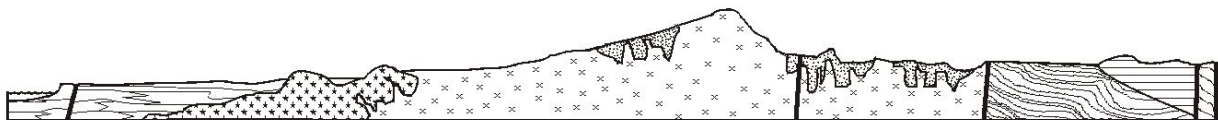
Field work and out of town travel will be required on a regular basis throughout California, Nevada, Arizona and New Mexico. This position demands an organized self-starter with "hands-on" management ability and good time management skills. Please visit our web site at www.terrapac.net.

Senior Geotechnical Engineer - Position responsibilities include project management, collecting field data, analysis, report writing, and client communication. Qualified candidates must be a licensed PE or GE and have a minimum of 8 years experience. Geotechnical forensic experience is a plus.

Project Geotechnical Engineer - Position responsibilities include project management, collecting field data, analysis, report writing, and client communication. Qualified candidates must be a licensed PE and have a minimum of 5 years experience. Geotechnical forensic experience is also a plus.

Staff Engineer/Geologist - We are looking for honest, hard working, technically minded graduates to perform subsurface investigations, collect field data, perform geotechnical analysis, and write reports. Construction inspections and oversight will also be required. Some experience in geotechnical investigations is preferred however recent graduates will be considered.

The right, qualified, independent and hard-working individual will be offered an excellent salary (commensurate with their experience), profit sharing/401K plan; company sponsored insurance program, and bonuses. If you are interested in pursuing quality in your life and your career please submit a resume and cover letter to: TerraPacific Consultants, Inc., 12245 World Trade Drive, Suite G, San Diego, CA 92128; or by fax to 858-521-1199; or by e-mail to jimg@terrapac.net.



SAN DIEGO ASSOCIATION OF GEOLOGISTS

www.sandiegogeologists.org

2008 MEMBERSHIP FORM

NAME: _____

Please type or print clearly, and check your chosen delivery address below.

Home Address: _____

Include in directory _____

Work Address: _____

Include in directory _____

Please include company or other affiliation

Preferred Mailing Address (Check One): Home Work

E-mail Address: _____

Website: _____

Field(s) of Interest: _____

Phone: Home: (____) _____ Work: (____) _____ Cell: (____) _____

NEW POLICY: Your membership dues include email delivery of the monthly newsletter. If you wish to receive a hardcopy of the newsletter through US Mail, please add \$10.00 to your membership dues.

Dues:	_____ Student Member (email delivery only)	\$ 5.00
(check choice)	_____ Regular Member (email delivery only)	\$ 25.00
	_____ Subscription to hardcopy newsletter	\$ 10.00
	_____ Corporate Sponsor (email delivery only)	\$100.00

(Name as you would like it to appear in guidebook and website)

New Member Continuing Member

Date: _____ Check for change of mailing address:

Please enclose a check payable to SDAG, and mail to:

**Bryan Miller-Hicks
744 Granite Hills Circle
El Cajon, CA 92019**

**San Diego Association of Geologists
c/o Scott Snyder
Ninyo & Moore
5710 Ruffin Road
San Diego, CA 92123**