

# SAN DIEGO ASSOCIATION OF GEOLOGISTS

[www.sandiegogeologists.org](http://www.sandiegogeologists.org)

---

## SDAG MEETING ANNOUNCEMENT

**Wednesday, May 16, 2007**

### *GEOLOGY OF THE GRAND CANYON*

*presented by*

**Susan Tanges, SDAG Member, Principal Geologist,  
Southland Geotechnical**

- Where:** San Diego Model Railroad Museum (New venue!)  
Casa De Balboa  
1649 El Prado  
San Diego, CA 92101  
(619) 696-0199  
<http://www.sdmodelrailroadm.com>
- When:** 5:30 pm – Social Hour  
6:15 pm – Dinner  
7:15 pm – Program
- Directions:** Directions: Take I-5 or CA-163 to Park Blvd. north 3/4 mile to Pepper Grove Dr. Turn left into the parking area. Limited parking may be available behind the museum on Pepper Grove Dr. off Park Blvd. Additional parking lots are behind the Fleet Center, and the Natural History Museum via Village Place.
- Dinner:** Menu: Sweet and Savory Salad (cranberries, walnuts, and goat cheese over greens). Chicken with artichoke hearts and capers, side pasta. Cookies. Beer, wine, and soda.
- Cost:** \$30 per person, \$20 for students. \$5 discount for SDAG members and their guests (one discount per person). Add \$5 if you did not make a reservation.
- Reservations:** Make your reservation **online** at [www.sandiegogeologists.org](http://www.sandiegogeologists.org) **no later than noon, Monday, May 14<sup>th</sup>.**

### 2007 EXECUTIVE COMMITTEE

**PRESIDENT** - David Bloom; *GDIT*; Ph: (619) 571-3470; [prez@sandiegogeologists.org](mailto:prez@sandiegogeologists.org)  
**VICE PRESIDENT** - Sarah Gray; *University of San Diego*; Ph: (619) 260-4098; fax: (619)260-6874; [sgray@sandiego.edu](mailto:sgray@sandiego.edu)  
**SECRETARY** – Scott Snyder; *Ninyo & Moore*; Ph: (858) 576-1000; [sdag2006@prodigy.net](mailto:sdag2006@prodigy.net)  
**TREASURER** - Bryan Miller-Hicks; *Petra, Inc.*; Ph: (858) 485-5530; fax: (619)260-6874; [bmillerhicks@petra-inc.com](mailto:bmillerhicks@petra-inc.com)  
**PUBLICATIONS**-Lowell Lindsay; *Sunbelt Publications*; Ph:(619)258-4911 x111; fax:(619)258-4916; [llindsay@sunbeltpub.com](mailto:llindsay@sunbeltpub.com)  
**WEBMASTER** – Carolyn Glockhoff; *Caro-Lion Enterprises*; Ph: (858) 549-3396; [carolyn@caro-lion.com](mailto:carolyn@caro-lion.com)  
**AT LARGE**– Mike Ertwine; *Geocon*; Ph:  
**AT LARGE**– Elizabeth Hartung; *Geocon*; Ph: (858) 558-6900; [hartung@geoconinc.com](mailto:hartung@geoconinc.com)  
**AT LARGE**– John Teasley; *Spectrum Environmental Solutions*; Ph: (760) 839-2163; [jtea@cox.net](mailto:jtea@cox.net)

## SUSAN TANGES

Sue Tanges is one of our most active long-time members. She is a past-President of SDAG. She has been involved with making professional geologists in San Diego better known locally and throughout the state. She is active in the San Diego State University Geology Alumni Association. She has been running raft trips through the Grand Canyon for many years and is expedition leader for the SDAG Grand Canyon raft trip next month.



### GRAND CANYON GEOLOGY – A Field Trip by Raft

As John Strong Newberry noted after a 1858 visit to the Grand Canyon, "...the Colorado Plateau is to the geologist, a paradise." His expedition leader, Lt. Joseph Christmas Ives, was not impressed with the Grand Canyon and stated that "the region... is, of course, altogether valueless".

A raft trip through the Grand Canyon begins at Lees Ferry and descends through a well-preserved sequence of Paleozoic sedimentary rocks that record multiple transgressions of carbonate seas onto western North America. Isolated exposures of faulted and tilted Precambrian sedimentary rocks are encountered as rafts pass through the Furnace Flats area of the Grand Canyon. Further downstream, the raft enters the narrow, steep-sided inner gorge. The gorge walls are composed of 1.75-billion year old basement rocks consisting of Vishnu metamorphic rocks and Zoroaster plutonic rocks. More technical and bigger rapids are encountered in this stretch of the Grand Canyon. In the western portion of the Canyon, remnants of lava dams are apparent from the river corridor. Multiple basaltic flows occurred within the last 1.5 million years and some dammed the river. The Colorado River carved the Grand Canyon through the Kai bab up lift, before descending into the area where the Colorado Plateau transitions to the Basin and Range province. At Grand Wash Cliffs, the Grand Canyon and our grand adventure end.



---

---

## 2007 SDAG MEETING SCHEDULE - Mark your Calendars!

Meetings are usually on the 3<sup>rd</sup> Wednesday of the month but may change to accommodate speaker and meeting place schedules. Check here for updates!

June	No Meeting (at the Grand Canyon)
July 11	TBA
August 15	TBA

### ANNOUNCEMENTS:

Ninyo & Moore is very sad to announce the passing of Erik Olsen, Chief Engineer. Erik had been battling liver and kidney problems for much of the past year and could fight no longer. Erik was a good friend to many in the San Diego office and around the company, a mentor to the staff, and an excellent engineer. He believed strongly in the value of community service both locally and globally, assisting students from Sweden and other countries to come to the US to study. He will be missed for his calm demeanor and sense of humor. Erik is survived by his wife Dorothy and two children, Karl and Katrina. There will be a "Celebration of Life" to commemorate Erik on Saturday, May 12, at 10 am at the Encinitas Community Center, 1140 Oakcrest Park Drive, Encinitas.

---

---

The **21st Annual SDSU Geology Alumni Field Trip & Campout** was in the Mojave National Preserve and was well attended with 20 adults, 2 teenagers and 1 young lady about 5 years old. Those that showed up Saturday morning at Kelso and left Sunday morning after the Hole-in-the-Wall stop were blessed with excellent weather. Those of us that arrived Friday after lots of I-15 traffic and rain most of the way from San Diego were treated to a dusting of snow, sub freezing temperatures and rather breezy conditions. Those of us (3 to be exact) that stayed til Monday morning were treated to a cold, windy Sunday night and a slight dusting of snow again on Monday morning. The Mid Hills campground seems to have unusual weather due to being at 5,600 feet so if any one returns be prepared! Those in attendance were: Sue and Herb Noll, Joe Corones, Mark Sweeney, Richard Larive, Perry Crampton, Jerry Dahm and his mother Bonnie Downing, Greg Cranham, Scott Donovan with his son and a friend, George Morgan, J. R. Morgan, Dave Valentine, Patti Winchell, Donna Gooley, Todd Greer, Dan Walsh and Regan, Bert Vogler, George Johnson and last but not least our Fearless Field Trip Leader **Joe Walsh** who we Sincerely Thank for giving us some insight into the geology of the Providence Mountains.

As far as next years Alumni Field Trip goes the location has not been decided yet so if anyone has a special place that your are working on or would like to share with the Alumni Group for a future Field Trip contact Joe Corones at [JCorones@sandiego.gov](mailto:JCorones@sandiego.gov) or (858) 492-5034 days.

---

---

The Anza Borrego Foundation has several exciting tours coming up for the spring! For more information please contact us at 760.767.4063 or [www.theabf.org](http://www.theabf.org).

---

---

The **2007 Annual Meeting of the Association of Environmental and Engineering Geologists (AEG)** will be held in the Los Angeles area at the Sheraton Universal Hotel (near Universal Studios). This will be the 50th Anniversary of the founding of the AEG and the meeting theme will revolve around that idea as well as celebrating California Geology. The technical program will focus on a variety of tunnel, fault hazard evaluations, marine geology, and coastal processes, as well as classic engineering geology, environmental geology, and groundwater topics. The 2007 Annual Meeting Planning Committee is currently scheduling several technical sessions, special symposia, short courses, and a teachers' workshop. These will provide opportunities for geologists and other professionals to share in the state-of-the-art and practices. In addition several field trips are planned to be held in conjunction with the meeting. Please place 2007 AEG convention on your calendars September 24 through 28, 2007.

## 2007 CORPORATE SPONSORS - THANK YOU!!

Corporate sponsors provide a significant portion of SDAG's operating and scholarship budget. In addition to monthly recognition for your contribution, you are entitled to a free Internet "link" from [SDAG's Website](#). We also list Corporate Sponsors in our annual SDAG Field Trip Volume. **Please consider SDAG sponsorship in 2007!**

A special thank you to **Ninyo & Moore** for sponsoring the preparation, duplication, and mailing of the newsletter for 2006 and 2007!

<a href="#">Dr. Richard Berry</a>	<a href="#">Geocon, Inc.</a>
David Bloom - <a href="#">General Dynamics Information Technology</a>	<a href="#">Dr. Sarah Gray - University of San Diego</a>
<a href="#">Sherry Bloom</a> , Coldwell Banker Real Estate	<a href="#">H&amp;P Mobile Geochemistry</a>
Joe Coronas, <a href="#">City of San Diego</a>	Lowell Lindsay, <a href="#">Sunbelt Publications</a>
Dr. Margaret Eggers <a href="#">Eggers Environmental, Inc.</a>	<a href="#">Dr. Monte Marshall</a>
William J. Elliott, Engineering Geologist	<a href="#">Ninyo &amp; Moore</a>
Phil Farquharson, <a href="#">CG-Squared Productions</a>	<a href="#">Dr. Anne Sturz</a>
Katherine Freese	David and Jan Steller
<a href="#">Geo-tech Imagery</a> , Woodrow Higdon	Carole L. Ziegler
<a href="#">Carolyn Glockhoff</a> , Caro-Lion Enterprises	Monte and Diane Murbach

## JOB OPENINGS!



URS Corporation, a nationwide, multidisciplinary consulting firm and the largest design firm in the country, has a strong project backlog in San Diego County in the transportation and water resources markets. We are seeking qualified candidates for the following positions for our San

Diego office:

**Engineering Geologist (Requisition #URS16201):** Geologist/Engineering Geologist with 0 to 5 years of experience in consulting engineering firm; preferably with master's degree. Responsible for supervising field explorations, geologic mapping, and report preparation. Should be experienced in logging borings in soil and rock, knowledge of Caltrans investigation procedures a plus.

**Geotechnical Engineer (Requisition #URS15584):** Civil/Geotechnical Engineer with 0 to 5 years of experience in consulting engineering firm; preferably with master's degree. Responsible for planning field and laboratory programs, engineering analyses, and report preparation. Strong analytical skills and communication skills a must.

URS is an Equal Opportunity Employer and strongly supports diversity in our work force (M/F/V/D). We offer competitive salaries and a comprehensive benefits package.

For immediate consideration, please submit to [mike\\_blackmore@urscorp.com](mailto:mike_blackmore@urscorp.com) or apply on-line under the Careers section of our website ([www.urscorp.com](http://www.urscorp.com)) using the requisition number shown in parentheses above.

Navy Facilities engineering Command, Southwest, San Diego is seeking qualified candidates for Environmental Engineers and Physical Scientists who will provide quality documentation for in house and contracted projects. Some position will act as Technical Experts for Environmental media including installation restoration, solid waste, storm water, wastewater, potable water, air emissions, lead paint, and asbestos. A bachelor's degree in the appropriate discipline is required. \$67K to \$104K (dependent on qualifications). To apply go to <https://www.chart.donhr.navy.mil>. Search by one of the following announcement numbers

Physical Scientist: #SW7--1301-12-PA597243-DE

Environmental Engr #SW7-0819-12-P5587789-DE

Phy Sci Expert #SW7-101-13-PA545284-DE

Envr Eng Expert #SW7-0819-13-P5604478-DE

Any questions please contact Lucreatria Holloway at 619-532-2810 or at [lucreatria.holloway@navy.mil](mailto:lucreatria.holloway@navy.mil).

SPL (Southern Petroleum Laboratories) has an opening for a part time position in San Diego. The ideal candidate would be a responsible student in geology or environmental studies available in the late afternoons for pickup, packing and shipping samples. 10 hours per week guaranteed. Please contact Julie Moore at 805.708.6154, or by e-mail at [jmoore@spl-inc.com](mailto:jmoore@spl-inc.com).

---

**TN & Associates, Inc.** specializes in environmental services, natural resources, infrastructure engineering, and construction services. Our San Diego office is currently looking to fill the following positions:

**Staff Geologist:** Geologist to perform office and field assignments for environmental site assessment and remediation projects. Position will involve soil borings, monitoring well installations, soil and water sampling, historical research investigations, data management, construction documentation and construction QA/QC, and report writing. Ability to adapt to both office and field environments a must. OSHA 40-hour training a plus. Periodic travel is required.

**Project Geologist:** Geologist with 3 to 7 years experience required in conducting all aspects of field investigations including limited site assessments, multi-task remedial investigations and remedial actions with a strong emphasis in technical writing skills. The ideal candidate will have experience in data analysis and reporting, PG registration and OSHA 40-hour training a plus. Work will entail some fieldwork and travel, mainly within California. Experience with government projects (DOD, USACE, AFCEE, Navy and USEPA) landfills and stormwater engineering/compliance a plus.

We offer a competitive salary, benefits package and friendly working environment. Equal Opportunity Employer. Please mail or fax your resume and letter of interest to: T N & Associates, Inc., 2247 San Diego Avenue, Suite 238, San Diego CA 92110, fax 619-291-8100.

---

Since 1986, clients have turned to **Ninyo & Moore** for innovative solutions to complex geotechnical and environmental challenges. As a leading geotechnical and environmental sciences engineering and consulting firm, Ninyo & Moore provides specialized services to clients in both the public and private sectors. With offices in Colorado, California, Nevada and Arizona, the firm is fully committed to being responsive, cost-efficient, and thorough in meeting its clients' project needs and objectives.

Ninyo & Moore Geotechnical & Environmental Sciences Consultants has immediate employment opportunities in our Denver, Irvine, Las Vegas, Oakland, Phoenix, and San Diego offices. Positions include Engineers and Geologists of all levels, including **Staff Engineers and Geologists, Project Engineers and Geologists, Staff and Project Environmental Scientists, Chief Geotechnical Engineer, and Construction Field and Laboratory Technicians.**

The successful candidates should have a BS or MS degree for staff-level positions and five years or more of experience for project to senior-level positions. The candidates should be detailed oriented and have excellent verbal and written communication skills. Professional Engineer (PE) and/or Professional Geologist (PG) registrations preferred.

Ninyo & Moore offers a competitive salary, excellent benefits and an opportunity for professional growth. Please visit our website for complete and detailed job descriptions and to submit your resume in confidence at [www.ninyoandmoore.com/careers](http://www.ninyoandmoore.com/careers) or mail to our corporate office at 5710 Ruffin Road, San Diego, CA 92123, Attention: Human Resources. EOE

---



**Hargis + Associates, Inc.**, a San Diego based consulting firm specializing in **hydrogeology and engineering**, and **SDAG Corporate Sponsor** currently has opportunities in our San Diego, California and Mesa Ari office. We are currently looking to fill the following positions:

**Staff Engineer:** Candidate would have a B.S. Degree in Chemical, Civil, or Mechanical Engineering, EIT Certification and/or a Masters Degree is a plus. Only entry level candidates will be considered. Candidate should possess strong writing and presentation skills. Position will be based in San Diego, California, and will require some travel and field work. OSHA 40-hour training preferred, but not mandatory.

**Hydrogeologist:** Candidate would have a B.S. Degree in Geology and M. S. Degree would be a plus. Entry level position, with work including soil and groundwater sampling, well installation, aquifer test analysis, and report preparation. Candidate should possess strong writing and presentation skills. Candidate with Hydrogeology coursework or GIS background is a positive. Position will be based in San Diego, and will require travel and field work. Only entry level candidates will be considered. Valid driver's license and U.S. Citizenship required. OSHA 40-hour training preferred, but not mandatory.

Hargis + Associates offer competitive salaries and benefits, and a challenging work atmosphere. Hargis + Associates is an Equal Opportunity Employer. To learn more about Hargis + Associates, please visit our website at: [www.hargis.com](http://www.hargis.com).

No phone calls please. Qualified candidates should send resumes, along with a cover letter summarizing experience and salary requirements to: Hargis + Associates, Inc., Attention: Phil Rosenberg, 2365 Northside Drive, Suite C-100, San Diego, CA 92108

---

## ONE STOP WONDERS!

1) The San Diego County Water Authority will hold two Spring Tours of a Local Dam and the Colorado River:

Spring is a great time to get out and about and tour your local water facilities. The Water Authority will host two tours during the month of May. On May 1, we will have a one-day trip to **Olivenhain Dam**, Diamond Valley Lake and other facilities in between. This is a great opportunity to see local and regional storage solutions.

On May 10-12, a trip to the **Colorado River Aqueduct** is planned. This trip will travel to the Lake Havasu area, where our pipes tap into the Colorado River and then follow the water back to San Diego, showcasing key infrastructure along the way. Both of these trips are offered at no cost to participants. For more information about the tours, contact Teresa Penunuri at 858-522-6708 or [tpenunuri@sdcwa.org](mailto:tpenunuri@sdcwa.org).

2) April or May (date to be determined). Tour of the **Marshall Rock inselberg** in El Cajon.

---

### **President's Corner**

Thanks to ASCE-geotechnical division and all the SDAG attendees for making last's month's meeting one of our most successful. We were about 75 people.

Look forward to an exciting meeting next month at the San Diego Model Railroad Museum in Balboa Park. This is a festive and fun venue, and our very own Sue Tanges will talk about the geology of the Grand Canyon. It is a great introduction to next month's SDAG charter raft trip through the Grand Canyon.

We've planned our second One Stop Wonder of 2007 this Sunday in Campo. Enjoy the short hike to a molybdenum deposit behind the Gaskill Stone Store. Linger after at the Stone Store museum and see the plans for Camp Lockett, or take an excursion in a historic railcar at the Southwest Railroad Museum across the tracks.

And we have our third OSW scheduled for June 3 to visit Marshall Rock, a curious feature located near Sunbelt Publications, where we'll enjoy "books, beer, and brauts" after the excursion.

I look forward to seeing at the Model Railroad Museum.

~Dave Bloom

## **SAN DIEGO ASSOCIATION OF GEOLOGISTS**

[www.sandiegogeologists.org](http://www.sandiegogeologists.org)

**CALL FOR PAPERS:**

***"Hydrogeology and Environmental Issues  
in the Guadalupe Valley  
and the Northern Coast of Baja California, Mexico"***

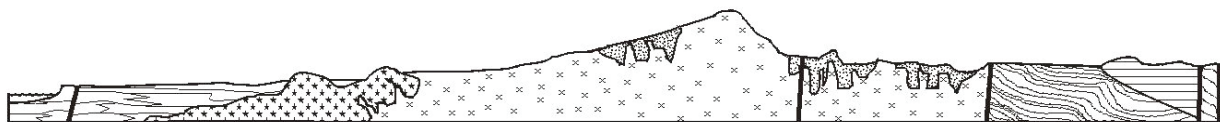
*To be published in association with the*

**2007 San Diego Association of Geologists  
Annual Field Trip**

**October 13<sup>th</sup>-14<sup>th</sup>, 2007**

(<http://www.sandiegogeologists.org/Publications.html>)

For further information, contact [sgray@san Diego.edu](mailto:sgray@san Diego.edu) or [tkretzsc@cicese.mx](mailto:tkretzsc@cicese.mx)



# SAN DIEGO ASSOCIATION OF GEOLOGISTS

[www.sandiegogeologists.org](http://www.sandiegogeologists.org)

## 2007 MEMBERSHIP FORM

NAME: \_\_\_\_\_

Please type or print clearly, and check your chosen delivery address below.

Home Address: \_\_\_\_\_

Include  
in  
directory \_\_\_\_\_

Work Address: \_\_\_\_\_

Include  
in  
directory \_\_\_\_\_

*Please include company or other affiliation*

Preferred Mailing Address (Check One):  Home  Work

E-mail Address: \_\_\_\_\_

Website: \_\_\_\_\_

Field(s) of Interest: \_\_\_\_\_

Phone: Home: ( ) \_\_\_\_\_ Work: ( ) \_\_\_\_\_ Cell: ( ) \_\_\_\_\_

**NEW POLICY:** Your membership dues include email delivery of the monthly newsletter. If you wish to receive a hardcopy of the newsletter through US Mail, please add \$10.00 to your membership dues.

Dues:	_____ Student Member (email delivery only)	\$ 5.00
(check choice)	_____ Regular Member (email delivery only)	\$ 25.00
	_____ Subscription to hardcopy newsletter	\$ 10.00
	_____ Corporate Sponsor (email delivery only)	\$100.00

New Member  Continuing Member

*(Name as you would like it to appear in guidebook and website)*

Date: \_\_\_\_\_ Check for change of mailing address:

Please enclose a check payable to SDAG, and mail to:

Sarah Gray  
Marine and Environmental Studies Department  
University of San Diego  
5998 Alcalá Park  
San Diego, CA 92110

**San Diego Association of Geologists  
c/o Scott Snyder  
Ninyo & Moore  
5710 Ruffin Road  
San Diego, CA 92123**