

SAN DIEGO ASSOCIATION OF GEOLOGISTS

www.sandiegogeologists.org

SDAG MEETING ANNOUNCEMENT

Wednesday, April 18, 2007

THE B4 PROJECT: HIGH-RESOLUTION TOPOGRAPHIC SURVEY SCANNING OF THE SAN ANDREAS AND SAN JACINTO FAULT ZONES

presented by

Ken Hudnut, PhD., USGS, Pasadena

- Where:** Catalina Room (southern end of MVCC) **SEE MAP, PAGE 2**
Marina Village Conference Center
1936 Quivira Way, San Diego, CA 92109
- When:** 5:30 pm – Social Hour
6:30 pm – Dinner
7:30 pm – Program
- Directions:** FROM INTERSTATE 5: Take the SEA WORLD DRIVE exit. From SEA WORLD DRIVE, take WEST MISSION BAY DRIVE on your right. When you see the large green sign that says QUIVIRA ROAD, get in the farthest left of the two left turn lanes. Turn left, go one very short block and turn left again. Drive about one half mile and MARINA VILLAGE will be on your right.
- FROM INTERSTATE 8: Take the WEST MISSION BAY DRIVE exit to the right. You will be on INGRAHAM STREET for a short distance from which you will take the next exit marked WEST MISSION BAY DRIVE on your right. When you see the large green sign that says QUIVIRA ROAD, get in the farthest left of the two left turn lanes. Turn left, go one very short block and turn left again. Drive about one half mile and MARINA VILLAGE will be on your right.
- Dinner:** Hawaiian! BBQ Pork Ribs "Maui Style" and Teriyaki Chicken, Vegetable Lo Mein, Chinese Salad, Fresh Fruit. Dessert: Pineapple Upside-down Cake. Coffee and beverage station. Full cash bar.
- Cost:** \$30 per person, \$5 discount for SDAG and AEEG members and their guests (one discount per person), \$20 for students. Add \$5 if you did not make a reservation.
- Reservations:** Make your reservation **online** at www.sandiegogeologists.org **no later than noon, Monday, April 16th.**

2007 EXECUTIVE COMMITTEE

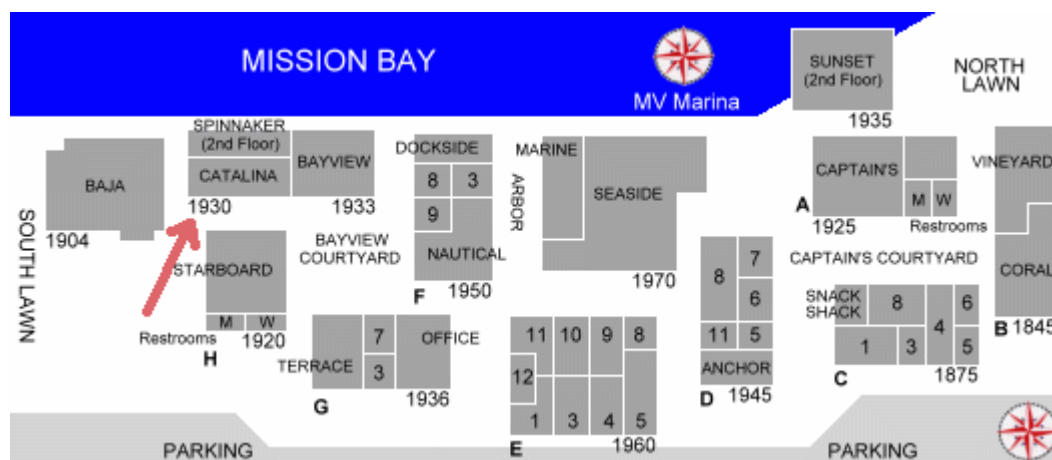
PRESIDENT - David Bloom; *GDIT*; Ph: (619) 571-3470; prez@sandiegogeologists.org
VICE PRESIDENT - Sarah Gray; *University of San Diego*; Ph: (619) 260-4098; fax: (619)260-6874; sgray@sandiego.edu
SECRETARY - Scott Snyder; *Ninyo & Moore*; Ph: (858) 576-1000; sdag2006@prodigy.net
TREASURER - Bryan Miller-Hicks; *Petra, Inc.*; Ph: (858) 485-5530; fax: (619)260-6874; bmillerhicks@petra-inc.com
PUBLICATIONS-Lowell Lindsay; *Sunbelt Publications*; Ph:(619)258-4911 x111; fax:(619)258-4916; llindsay@sunbeltpub.com
WEBMASTER - Carolyn Glockhoff; *Caro-Lion Enterprises*, Ph: (858) 549-3396; carolyn@caro-lion.com
AT LARGE- Mike Ertwine; *Geocon*; Ph:
AT LARGE- Elizabeth Hartung; *Geocon*; Ph: (858) 558-6900; hartung@geoconinc.com
AT LARGE- John Teasely; *Spectrum Environmental Solutions*; Ph: (760) 839-2163; jtea@cox.net

KEN HUDNUT, PHD., USGS, PASADENA

Ken Hudnut studies earthquakes as a geophysicist for the U. S. Geological Survey in Pasadena, California. He serves as Geodetic Coordinator on the U. S. Earthquake Program Council and leads the Southern San Andreas Fault Evaluation (SoSAFE) Project for SCEC. Since receiving his Ph.D. from Columbia in 1989, and his A.B. (high honors) from Dartmouth in 1983, he has published over 70 scientific papers. He is a Visiting Associate in Geophysics on the faculty of the California Institute of Technology.

The B4 Project: High-Resolution Topographic Survey Scanning of the San Andreas and San Jacinto Fault Zones

In May 2005, the B4 Project team performed a high-resolution topographic survey of the San Andreas and San Jacinto fault zones in southern California, in order to obtain pre-earthquake imagery necessary to determine near-field ground deformation after a future large earthquake (hence the name, B4), and to support tectonic and paleoseismic research. We imaged the faults in unprecedented detail using Airborne Laser Swath Mapping. The scientific purpose of such spatially detailed imaging is to establish actual fault slip heterogeneity in (and after) a major earthquake, so as to help resolve classic great debates in earthquake source physics. We also succeeded in improving the methods used for airborne imaging, such that very high quality imagery was obtained. All of the data collected are now openly available to the public over the internet. Plans for the ShakeOut earthquake scenario and multi-hazard disaster response exercise, to occur in late 2008, will also be discussed.



2007 SDAG MEETING SCHEDULE - Mark your Calendars!

Meetings are usually on the 3rd Wednesday of the month but may change to accommodate speaker and meeting place schedules. Check here for updates!

May 16	Sue Tanges, Grand Canyon Geology
June 20	TBA
July 18	TBA

ANNOUNCEMENTS:

SDAG is sad to announce the passing of **Robert B. McEuen** former geophysics professor at San Diego State University. Dr. McEuen was 77, and living in Denver, CO, formerly of San Diego, died March 8, 2007. He is survived by Cecily, his wife of 52 years; daughters, Mary (Ron Kenny) McEuen, Denver, CO, Rebecca (Jeffrey) Wilcox, Minneapolis, MN, Amy (Leon Hinz) McEuen, Springfield, IL; brother of Carol (Jack) Feeney, Long Beach, CA; a niece and nephew; eight grandchildren; and a grandnephew. Memorials may be made to Parkinson Association of the Rockies, 1420 Ogden St., Ste. 201, Denver 80218 or Hospice of Metro Denver, 501 Cherry St., Ste. 700, Denver, 80246

The **21st Annual SDSU Geology Alumni Field Trip & Campout** will be in the Mojave National Preserve located about 80 miles east of Barstow, CA. north of 1-40 & south of 1-15. This trip was inspired by Welford "Ford'Gamer", a former SDSU Geology Department Alumni, who was a NPS Ranger at Mojave National Preserve for several years. Ford recently passed away. Joe Walsh, also an SDSU Geology Department alumni, has graciously volunteered to lead this year's field trip in an area that he has been visiting for the Last 30 years. We will provide the best overview of the Geology of the Providence Mountains and surrounding area. The Providence Mountains are comprised of Precambrian crystalline rocks, Paleozoic sedimentary rocks and Tertiary intrusive rocks. The range is bound by extensive faulting which has produced considerable mineralization in the area. Low angle normal faults are the outstanding structural feature in the Providence Mountains. For more information, contact Joe Coronas at (858) 492-5034 (day), (858) 484-3582 (eve), (858) 518-7869 (cell) or jcorones@sandiego.gov

Have you ever wondered what the Anza-Borrego Desert and Grand Canyon have in common? Well, this coming September you will have a rare opportunity to find out by joining Anza-Borrego Institute's one-of-a-kind 6-day Desert Hostel field expedition –**Land of the Sleeping Rainbow** – exploring the ancient story of the Colorado River's impact on the southern Colorado Plateau and surrounding region. Guided by popular geologist/author Paul Remeika, you'll see the stratigraphic wonderment of the Grand Staircase, explore Zion and Grand Canyon National Parks and relive a portion of the trips John Wesley Powell pioneered during a half-day smooth-water rafting on the mighty Colorado River plus an all-day boat adventure on Lake Powell to the spectacular Rainbow Bridge. A full description of the tour and day-to-day schedule is attached. The trip is limited to 20 participants so be sure to register early since this will fill up fast. For more information please contact us at 760.767.4063 or www.theabf.org.

The **2007 Annual Meeting of the Association of Environmental and Engineering Geologists (AEG)** will be held in the Los Angeles area at the Sheraton Universal Hotel (near Universal Studios). This will be the 50th Anniversary of the founding of the AEG and the meeting theme will revolve around that idea as well as celebrating California Geology. The technical program will focus on a variety of tunnel, fault hazard evaluations, marine geology, and coastal processes, as well as classic engineering geology, environmental geology, and groundwater topics. The 2007 Annual Meeting Planning Committee is currently scheduling several technical sessions, special symposia, short courses, and a teachers' workshop. These will provide opportunities for geologists and other professionals to share in the state-of-the-art and practices. In addition several field trips are planned to be held in conjunction with the meeting. Please place 2007 AEG convention on your calendars September 24 through 28, 2007.

President's Corner

- Another congratulations to SDAG student scholarship recipient and CICESE Ph.D. candidate Ruben Campos for providing us with an interesting presentation of his work on the aquifer of the Guadalupe Valley. Ruben brought his whole family from Ensenada to our meeting. He gave his talk in English. He did a much better job than I would have if I had to give a presentation in Spanish! This talk was a great preview to our annual field trip in October to the same Guadalupe Valley.
- I'm a member of the Technical Advisory Committee for the California Board for Geologists and Geophysicists. We meet again this month. Let me know of any concerns you may have. I can call attention to your concerns to the TAC or the Board.
- We return to the Catalina Room at Marina Village this month. In May we meet for a special meeting at the San Diego Model Railroad Museum in Balboa Park for a presentation of Grand Canyon geology by our own Sue Tanges.
- We have three one-stop wonders planned for the next two months: a San Diego reservoir tour, old molybdenum mine, and the Marshall Rock inselberg. Check the website for current information. We're also planning short trips later this year to Plaster City and geothermal resources in the Imperial Valley.
- Be sure to join the SDSU geology alumni on the annual field trip to Mohave National Preserve in the Providence Mountains, April 20-22.
- Our fancy new SDAG logo jackets are in! Forest green. \$45 each in Medium, Large, and XL.
- If you'd like to get involved with SDAG activities please talk to me or one of the officers.

2007 CORPORATE SPONSORS - THANK YOU!!

Corporate sponsors provide a significant portion of SDAG's operating and scholarship budget. In addition to monthly recognition for your contribution, you are entitled to a free Internet "link" from [SDAG's Website](#). We also list Corporate Sponsors in our annual SDAG Field Trip Volume. **Please consider SDAG sponsorship in 2007!**

A special thank you to **Ninyo & Moore** for sponsoring the preparation, duplication, and mailing of the newsletter for 2006 and 2007!

Dr. Richard Berry	Geocon, Inc.
David Bloom - General Dynamics Information Technology	Dr. Sarah Gray - University of San Diego
Sherry Bloom , Coldwell Banker Real Estate	H&P Mobile Geochemistry
Joe Corones, City of San Diego	Lowell Lindsay, Sunbelt Publications
Dr. Margaret Eggers Eggers Environmental, Inc.	Dr. Monte Marshall
William J. Elliott, Engineering Geologist	Ninyo & Moore
Phil Farquharson, CG-Squared Productions	Dr. Anne Sturz
Katherine Freese	David and Jan Steller
Geo-tech Imagery , Woodrow Higdon	Carole L. Ziegler
Carolyn Glockhoff , Caro-Lion Enterprises	Monte and Diane Murbach

JOB OPENINGS!



URS Corporation, a nationwide, multidisciplinary consulting firm and the largest design firm in the country, has a strong project backlog in San Diego County in the transportation and water resources markets. We are seeking qualified candidates for the following positions for our San Diego office:

Engineering Geologist (Requisition #URS16201): Geologist/Engineering Geologist with 0 to 5 years of experience in consulting engineering firm; preferably with master's degree. Responsible for supervising field explorations, geologic mapping, and report preparation. Should be experienced in logging borings in soil and rock, knowledge of Caltrans investigation procedures a plus.

Geotechnical Engineer (Requisition #URS15584): Civil/Geotechnical Engineer with 0 to 5 years of experience in consulting engineering firm; preferably with master's degree. Responsible for planning field and laboratory programs, engineering analyses, and report preparation. Strong analytical skills and communication skills a must.

URS is an Equal Opportunity Employer and strongly supports diversity in our work force (M/F/V/D). We offer competitive salaries and a comprehensive benefits package.

For immediate consideration, please submit to mike_blackmore@urscorp.com or apply on-line under the Careers section of our website (www.urscorp.com) using the requisition number shown in parentheses above.

SPL (Southern Petroleum Laboratories) has an opening for a part time position in San Diego. The ideal candidate would be a responsible student in geology or environmental studies available in the late afternoons for pickup, packing and shipping samples. 10 hours per week guaranteed. Please contact Julie Moore at 805.708.6154, or by e-mail at jmoore@spl-inc.com.

TN & Associates, Inc. specializes in environmental services, natural resources, infrastructure engineering, and construction services. Our San Diego office is currently looking to fill the following positions:

Staff Geologist: Geologist to perform office and field assignments for environmental site assessment and remediation projects. Position will involve soil borings, monitoring well installations, soil and water sampling, historical research investigations, data management, construction documentation and construction QA/QC, and report writing.

Ability to adapt to both office and field environments a must. OSHA 40-hour training a plus. Periodic travel is required.

Project Geologist: Geologist with 3 to 7 years experience required in conducting all aspects of field investigations including limited site assessments, multi-task remedial investigations and remedial actions with a strong emphasis in technical writing skills. The ideal candidate will have experience in data analysis and reporting. PG registration and OSHA 40-hour training a plus. Work will entail some fieldwork and travel, mainly within California . Experience with government projects (DOD, USACE, AFCEE, Navy and USEPA) landfills and stormwater engineering/compliance a plus.

We offer a competitive salary, benefits package and friendly working environment. Equal Opportunity Employer. Please mail or fax your resume and letter of interest to: T N & Associates, Inc., 2247 San Diego Avenue, Suite 238, San Diego CA 92110 , fax 619-291-8100.

Since 1986, clients have turned to **Ninyo & Moore** for innovative solutions to complex geotechnical and environmental challenges. As a leading geotechnical and environmental sciences engineering and consulting firm, Ninyo & Moore provides specialized services to clients in both the public and private sectors. With offices in Colorado, California, Nevada and Arizona, the firm is fully committed to being responsive, cost-efficient, and thorough in meeting its clients' project needs and objectives.

Ninyo & Moore Geotechnical & Environmental Sciences Consultants has immediate employment opportunities in our Denver, Irvine, Las Vegas, Oakland, Phoenix, and San Diego offices. Positions include Engineers and Geologists of all levels, including **Staff Engineers and Geologists, Project Engineers and Geologists, Staff and Project Environmental Scientists, Chief Geotechnical Engineer, and Construction Field and Laboratory Technicians.**

The successful candidates should have a BS or MS degree for staff-level positions and five years or more of experience for project to senior-level positions. The candidates should be detailed oriented and have excellent verbal and written communication skills. Professional Engineer (PE) and/or Professional Geologist (PG) registrations preferred.

Ninyo & Moore offers a competitive salary, excellent benefits and an opportunity for professional growth. Please visit our website for complete and detailed job descriptions and to submit your resume in confidence at www.ninyoandmoore.com/careers or mail to our corporate office at 5710 Ruffin Road, San Diego, CA 92123, Attention: Human Resources. EOE



Hargis + Associates, Inc., a San Diego based consulting firm specializing in **hydrogeology and engineering**, and **SDAG Corporate Sponsor** currently has opportunities in our San Diego, California and Mesa Ari office. We are currently looking to fill the following positions:

Staff Engineer: Candidate would have a B.S. Degree in Chemical, Civil, or Mechanical Engineering, EIT Certification and/or a Masters Degree is a plus. Only entry level candidates will be considered.

Candidate should possess strong writing and presentation skills. Position will be based in San Diego, California, and will require some travel and field work. OSHA 40-hour training preferred, but not mandatory.

Hydrogeologist: Candidate would have a B.S. Degree in Geology and M. S. Degree would be a plus. Entry level position, with work including soil and groundwater sampling, well installation, aquifer test analysis, and report preparation. Candidate should possess strong writing and presentation skills. Candidate with Hydrogeology coursework or GIS background is a positive. Position will be based in San Diego, and will require travel and field work. Only entry level candidates will be considered. Valid driver's license and U.S. Citizenship required. OSHA 40-hour training preferred, but not mandatory.

Hargis + Associates offer competitive salaries and benefits, and a challenging work atmosphere. Hargis + Associates in an Equal Opportunity Employer. To learn more about Hargis + Associates, please visit our website at: www.hargis.com.

No phone calls please. Qualified candidates should send resumes, along with a cover letter summarizing experience and salary requirements to: Hargis + Associates, Inc., Attention: Phil Rosenberg, 2365 Northside Drive, Suite C-100, San Diego, CA 92108

Southwest Geophysics is a certified small business enterprise, in San Diego, California, specializing in providing geophysical services to environmental and engineering clients. We are currently seeking a **Full-time Project Geophysicist**. A minimum of two years experience is required in conducting all aspects of field investigations. The ideal candidate will have strong technical writing skills and experience in data analysis and reporting. B.S. in Geophysics or Geological Sciences is required, M.S. a plus. California State Registration a plus.

Qualified candidate should email resumes, along with a letter of interest to: jessica@southwestgeophysics.com or they may be mailed to our office at 7438 Trade Street, San Diego, CA 92121, Attention: Jessica Parnell

ONE STOP WONDERS!

1) The San Diego County Water Authority will hold two Spring Tours of a Local Dam and the Colorado River:

Spring is a great time to get out and about and tour your local water facilities. The Water Authority will host two tours during the month of May. On May 1, we will have a one-day trip to **Olivenhain Dam**, Diamond Valley Lake and other facilities in between. This is a great opportunity to see local and regional storage solutions.

On May 10-12, a trip to the **Colorado River Aqueduct** is planned. This trip will travel to the Lake Havasu area, where our pipes tap into the Colorado River and then follow the water back to San Diego, showcasing key infrastructure along the way. Both of these trips are offered at no cost to participants. For more information about the tours, contact Teresa Penunuri at 858-522-6708 or tpenunuri@sdcwa.org.

2) Sunday, May 6. Campo. **Hike to the old molybdenum mine** about 1.5 round trip up a fairly steep but short trail. Meet at the Gaskill Stone Store at 10am, or carpool from Sunbelt Publications parking lot at 9am. Lunch in Campo and tour the Mountain Empire Historical Museum at the stone store, the Camp Lockett military museum upstairs, the Railroad Museum, or Motor Transport Museum in the afternoon.

3) April or May (date to be determined). Tour of the **Marshall Rock inselberg** in El Cajon.

SAN DIEGO ASSOCIATION OF GEOLOGISTS

www.sandiegogeologists.org

CALL FOR PAPERS:

***"Hydrogeology and Environmental Issues
in the Guadalupe Valley
and the Northern Coast of Baja California, Mexico"***

*To be published in association with the
2007 San Diego Association of Geologists
Annual Field Trip*

October 13th-14th, 2007

(<http://www.sandiegogeologists.org/Publications.html>)

Co-editors:

Sarah Gray, Vice President, SDAG

Marine and Environmental Studies Department, University of San Diego
(sgray@san Diego.edu; 619-260-4098)

Thomas Kretzschmar

Depto. de Geología,
Centro de Investigación Científica y de Educación Superior de Ensenada
(CICESE)

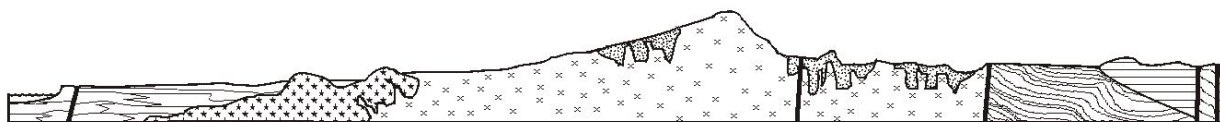
(tkretzsc@cicese.mx; 646 175 0500 Ext. 26047)

SCOPE: Papers addressing topics related to hydrogeology, geology, environmental issues, geography, wineries, and history of the Guadalupe Valley or the northern coast of Baja California.

TIMELINE:

- Email a statement of interest & topic to the co-editors as soon as possible
- Manuscripts due: April 15th, 2007
- Revised manuscripts due: July 1st, 2007
- Target publication date: late September, 2007

For further information, contact sgray@san Diego.edu or tkretzsc@cicese.mx



SAN DIEGO ASSOCIATION OF GEOLOGISTS

www.sandiegogeologists.org

2007 MEMBERSHIP FORM

NAME: _____

Please type or print clearly, and check your chosen delivery address below.

Home Address: _____

Include in directory _____

Work Address: _____

Include in directory _____

Please include company or other affiliation

Preferred Mailing Address (Check One): Home Work

E-mail Address: _____

Website: _____

Field(s) of Interest: _____

Phone: Home: () _____ Work: () _____ Cell: () _____

NEW POLICY: Your membership dues include email delivery of the monthly newsletter. If you wish to receive a hardcopy of the newsletter through US Mail, please add \$10.00 to your membership dues.

Dues:	_____ Student Member (email delivery only)	\$ 5.00
(check choice)	_____ Regular Member (email delivery only)	\$ 25.00
	_____ Subscription to hardcopy newsletter	\$ 10.00
	_____ Corporate Sponsor (email delivery only)	\$100.00

(Name as you would like it to appear in guidebook and website)

New Member Continuing Member

Date: _____ Check for change of mailing address:

Please enclose a check payable to SDAG, and mail to:

Sarah Gray
Marine and Environmental Studies Department
University of San Diego
5998 Alcalá Park
San Diego, CA 92110

**San Diego Association of Geologists
c/o Scott Snyder
Ninyo & Moore
5710 Ruffin Road
San Diego, CA 92123**