

SAN DIEGO ASSOCIATION OF GEOLOGISTS

www.sandiegogeologists.org

SDAG ANNUAL HOLIDAY MEETING ANNOUNCEMENT

Wednesday, December 20, 2006

FOSSIL MYSTERIES

presented by

Tom Deméré, Ph.D.

San Diego Natural History Museum

Where: San Diego Natural History Museum
1788 El Prado, Balboa Park
San Diego, CA 92112
619-232-3821



When: 6:00 pm – Social Hour
7:00 pm – Dinner
8:00 pm – Program

Directions: Located in Balboa Park, near the intersection of Park Boulevard and Village Place, just south of the San Diego Zoo. Enter through the grand entrance on the north side, facing the large Morton Bay fig tree.

Dinner: Wonderful Mexican appetizers and buffet - made for us by our friend Mr. Mendoza at Taco Express! (Includes beer, wine, and soft drinks!)

Cost: \$30 per member and guests, \$15 for students. Add \$5 if you did not make a reservation.

Reservations: Make your reservation **online** at www.sandiegogeologists.org or call the SDAG Reservation Hotline at (619) 255-8380, **no later than 5:00 p.m. Monday, December 18th**.

RESERVATIONS CANNOT BE ACCEPTED AFTER Monday AT 5 PM.
IF YOU DO NOT MAKE A RESERVATION, WE CANNOT GUARANTEE YOU A MEAL.

2006 EXECUTIVE COMMITTEE

PRESIDENT - Phil Farquharson; CG-Squared Productions Ph(619)224-8463 fax(619)255-8380 geoguy@cg-squared.com

VICE PRESIDENT- David Bloom; Anteon; Ph: (619) 571-3470; vp@sandiegogeologists.org

SECRETARY – Scott Snyder; Ninyo & Moore; Ph: (858) 576-1000; sdag2006@prodigy.net

TREASURER - Sarah Gray; University of San Diego, Ph: (619) 260-4098; fax: (619)260-6874; sgray@san Diego.edu

PUBLICATIONS-Lowell Lindsay; Sunbelt Publications; Ph:(619)258-4911 x111; fax:(619)258-4916; lindsay@sunbeltpub.com

WEBMASTER – Carolyn Glockhoff; Caro-Lion Enterprises, Ph: (858) 549-3396; carolyn@caro-lion.com

BIOGRAPHICAL SUMMARY: THOMAS A. DEMÉRÉ, PH.D.

Tom attended San Diego State University (B.S. Geology), Univ. So. Calif. (M.S. Geology) and UCLA (Ph.D. Biology). After an initial period working in the petroleum industry, Tom moved to the San Diego Natural History Museum where he has been employed since 1979. He is currently Curator of the Department of Paleontology, where he occupies the Joshua L. Baily, Jr. Chair of Paleontology. Tom's research interests are in Cenozoic paleontology and geology of southern California and northern Baja California. His invertebrate paleontological work has concentrated on Plio-Pleistocene molluscan biostratigraphy, paleoecology, and taphonomy. His vertebrate paleontological work focuses on the evolutionary history of marine mammals (pinnipeds and cetaceans). In pursuing this line of research, Tom is involved with field investigations to discover new fossil remains of pinnipeds and cetaceans, with anatomical investigations of both fossil and Recent marine mammals, and with functional analysis of feeding and locomotor anatomical features.

Since the mid-1980s, Tom has been deeply involved with conservation of the rich and unique paleontological resources of San Diego County. In this regard, he has helped put together guidelines for determining the paleontological resource sensitivity of the different geological deposits that occur in the county. Tom has also headed up the Museum's Department of PaleoServices, which seeks to mitigate negative construction-related impacts to sensitive paleontological resources. Typically, mitigation involves monitoring of construction activities, discovery and salvaged of unearthed fossil remains, preparation of salvaged fossils, identification and curation of prepared fossils, and storage of curated fossils in perpetuity for future generations. To date, this effort has resulted in the recovery of countless rare and/or unique fossil remains, many of which are, or have been, displayed for the public at the Museum.



FOSSIL MYSTERIES

75 million years in the making, this new permanent exhibit at the San Diego Natural History Museum features fossils collected by Museum paleontologists from the Peninsular California region (Southern California, USA and northern Baja California, Mexico). Many of the fossils were found as the result of paleontological salvage work conducted by the Museum over the past 26 years at southern California construction sites. Tom's lecture will provide a 'behind-the-scenes' view of the making of this new exhibit including discussions of individual marquee fossil specimens (their discovery and collection), major exhibit themes, and innovative design elements.

Announcing the 2007 SDAG Field Trip

SAVE THE DATES: October 13th-14th

"Hydrogeology and Environmental Issues in the Guadalupe Valley and Northern Coast of Baja California, Mexico"

In a comfortable, air-conditioned bus, participants will explore one of the most beautiful regions of northern Baja California, the Guadalupe Valley, which produces over 95% of Mexico's wine. Some of the activities will include: visits to wineries; discussions of environmental problems associated with coastal development; saltwater intrusion and its implications on drinking water and agriculture in Maneadero; the fracture and landslide zones of the Rosarito Formation; future economic and environmental concerns; and a discussion of the history of native peoples and immigrants to the area. We hope to visit and possibly camp at San Antonio Necua (a local native village). Important note: a valid passport will be required to cross the border. Please let Sarah Gray know if you have any suggestions about specific stops or topics.

2007 SDAG MEETING SCHEDULE - Mark your Calendars!

Meetings are usually on the 3rd Wednesday of the month but may change to accommodate speaker and meeting place schedules. Check here for updates!

December	San Diego Natural History Museum (Party Time!)
January	TBA
February	TBA

ANNOUNCEMENTS:

Association of Earth Science Editors (AESE), 40th ANNUAL MEETING- The four-day event in November, based at the Hacienda Hotel in Old Town, was a huge success with an international flair including attendees from Canada, the Netherlands, and Poland. SDAG was the hometown host and special thanks (from A to Z) go to:

- Pat Abbott, keynote speaker "Rise and Fall of San Diego"
- Phil Farquharson, program design and Audio-Visual coordinator
- Monte Marshall, lead presenter on the field trip cruise off Point Loma
- Roy Shlemon, session presenter "Peer Reviews"
- Carole Ziegler, registrar and treasurer

ANNUAL SDAG BOOKSHELF SALE- Continuing our holiday custom, we'll have San Diego's finest selection of earth science and related pubs available at a discount at the meeting on 20 December (new moon and just in time for last minute shopping.) Special feature this year, and timely for next year's field trip return to Baja, the beautiful new full-color "Oasis of Stone: Visions of Baja California Sur" by Bruce Berger and Miguel Angel de la Cueva. A major focus of the work is the geologic story of this region, the southernmost of three states that share Peninsular California.

PRESIDENT'S CORNER:

November - Dr. Tom Rockwell of SDSU enlightened us on the latest doin's of the San Jacinto fault. Thanks, Tom!

December - San Diego Natural History Museum, with Dr. Tom Deméré filling us in on the new permanent exhibit, "Fossil Mysteries." This year we will actually conduct our social hour and dining on the second floor of the museum. Please arrive ready to vote in a new treasurer, as Sarah Gray will move up to vice president and field trip CEO. And speaking of money, please bring your checkbooks, so that you can renew your memberships for 2007! The form is located within this newsletter.

In the theater, Tom will tell us about what it took to put together the wonderful fossil mysteries exhibit, and I'll hand the gavel/hammer over to Dave Bloom, who is already bursting with ideas for next year's programs.



P.S. It's hard for me to imagine that over four years ago, Pat Brooks got me to volunteer to be an SDAG officer! I look forward to helping out in the years to come.

2006 CORPORATE SPONSORS - THANK YOU!!

Corporate sponsors provide a significant portion of SDAG's operating and scholarship budget. In addition to monthly recognition for your contribution, you are entitled to a free Internet "link" from [SDAG's Website](#). We also list Corporate Sponsors in our annual SDAG Field Trip Volume. ***Please consider SDAG sponsorship in 2006!***

A special thank you to **Ninyo & Moore** for sponsoring the preparation, duplication, and mailing of the newsletter for 2006 and 2007!

Ninyo & Moore , Jonathan Goodmacher	Lowell Lindsay, Sunbelt Publications
Katherine Freese	Lee Vanderhurst, Geotechnics, Inc.
Hargis + Associates, Inc. , Mike Palmer	David and Jan Steller
Southwest Geophysics, Inc.	Phil Farquharson, CG-Squared Productions
Dr. Margaret Eggers Eggers Environmental, Inc.	Sue Tanges, Southland Geotechnical Consultants
Joe Coronas, City of San Diego	John Hoobs - Geocon, Inc.
Donald Sorben	Monte and Diane Murbach
William J. Elliott, Engineering Geologist	Carole L. Ziegler
Geopacifica, Inc. - James Knowlton	Leighton and Associates
John Peterson, Peterson Environmental Services	Tom Rockwell, Earth Consultants International
Pat Brooks and Julie Crosby	Laura Maghsoudlou, EnviroMINE, Inc.
Dr. Monte Marshall	Dr. Anne Sturz
Dr. Richard Berry	Carolyn Glockhoff , Caro-Lion Enterprises
First National Oil, Inc.	Sherry Bloom , Coldwell Banker Real Estate
GeoSoils, Inc. , Robert Crisman and John Franklin	Fugro West, Inc. / Fugro Pelagos, Inc. – Jerry Wilson
Robert Walters Equipment Rental	Helenschmidt Geotechnical, Inc.
Christian Wheeler Engineering	Geotechnical Exploration, Inc.
Dr. Sarah Gray - University of San Diego	Geocon , Inc.

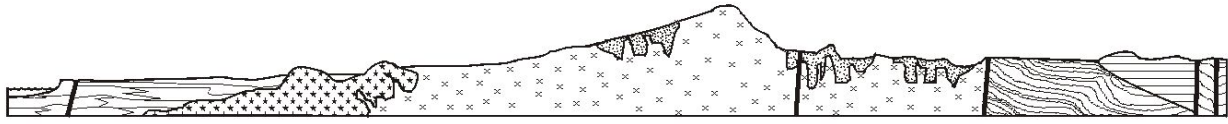
JOB OPENINGS!

TN & Associates, Inc. specializes in environmental services, natural resources, infrastructure engineering, and construction services. Our San Diego office is currently looking to fill the following positions:

Staff Geologist: Geologist to perform office and field assignments for environmental site assessment and remediation projects. Position will involve soil borings, monitoring well installations, soil and water sampling, historical research investigations, data management, construction documentation and construction QA/QC, and report writing. Ability to adapt to both office and field environments a must. OSHA 40-hour training a plus. Periodic travel is required.

Project Geologist: Geologist with 3 to 7 years experience required in conducting all aspects of field investigations including limited site assessments, multi-task remedial investigations and remedial actions with a strong emphasis in technical writing skills. The ideal candidate will have experience in data analysis and reporting. PG registration and OSHA 40-hour training a plus. Work will entail some fieldwork and travel, mainly within California. Experience with government projects (DOD, USACE, AFCEE, Navy and USEPA) landfills and stormwater engineering/compliance a plus.

We offer a competitive salary, benefits package and friendly working environment. Equal Opportunity Employer. Please mail or fax your resume and letter of interest to: T N & Associates, Inc., 2247 San Diego Avenue, Suite 238, San Diego CA 92110, fax 619-291-8100.



SAN DIEGO ASSOCIATION OF GEOLOGISTS

www.sandiegoeologists.org

CALL FOR PAPERS:
***"Hydrogeology and Environmental Issues
in the Guadalupe Valley
and the Northern Coast of Baja California, Mexico"***

*To be published in association with the
2007 San Diego Association of Geologists
Annual Field Trip*

October 13th-14th, 2007

(<http://www.sandiegoeologists.org/Publications.html>)

Co-editors:

Sarah Gray, Vice President, SDAG

Marine and Environmental Studies Department, University of San Diego

(sgray@san Diego.edu; 619-260-4098)

Thomas Kretzschmar

Depto. de Geología,

Centro de Investigación Científica y de Educación Superior de Ensenada
(CICESE)

(tkretzsc@cicese.mx; 646 175 0500 Ext. 26047)

SCOPE: Papers addressing topics related to hydrogeology, geology, environmental issues, geography, wineries, and history of the Guadalupe Valley or the northern coast of Baja California.

TIMELINE:

- Email a statement of interest & topic to the co-editors as soon as possible
- Manuscripts due: April 15th, 2007
- Revised manuscripts due: July 1st, 2007
- Target publication date: late September, 2007

For further information, contact sgray@san Diego.edu or tkretzsc@cicese.mx

JOB OPENINGS! (continued)

Since 1986, clients have turned to **Ninyo & Moore** for innovative solutions to complex geotechnical and environmental challenges. As a leading geotechnical and environmental sciences engineering and consulting firm, Ninyo & Moore provides specialized services to clients in both the public and private sectors. With offices in Colorado, California, Nevada and Arizona, the firm is fully committed to being responsive, cost-efficient, and thorough in meeting its clients' project needs and objectives.

Ninyo & Moore Geotechnical & Environmental Sciences Consultants has immediate employment opportunities in our Denver, Irvine, Las Vegas, Oakland, Phoenix, and San Diego offices. Positions include Engineers and Geologists of all levels, including **Staff Engineers and Geologists, Project Engineers and Geologists, Staff and Project Environmental Scientists, Chief Geotechnical Engineer, and Construction Field and Laboratory Technicians.**

The successful candidates should have a BS or MS degree for staff-level positions and five years or more of experience for project to senior-level positions. The candidates should be detailed oriented and have excellent verbal and written communication skills. Professional Engineer (PE) and/or Professional Geologist (PG) registrations preferred.

Ninyo & Moore offers a competitive salary, excellent benefits and an opportunity for professional growth. Please visit our website for complete and detailed job descriptions and to submit your resume in confidence at www.ninyoandmoore.com/careers or mail to our corporate office at 5710 Ruffin Road, San Diego, CA 92123, Attention: Human Resources. EOE

Hargis + Associates, Inc., a San Diego based consulting firm specializing in **hydrogeology and engineering**, and **SDAG Corporate Sponsor** currently has opportunities in our San Diego, California and Mesa Ari office. We are currently looking to fill the following positions:

Staff Engineer: Candidate would have a B.S. Degree in Chemical, Civil, or Mechanical Engineering, EIT Certification and/or a Masters Degree is a plus. Only entry level candidates will be considered. Candidate should possess strong writing and presentation skills. Position will be based in San Diego, California, and will require some travel and field work. OSHA 40-hour training preferred, but not mandatory.

Hydrogeologist: Candidate would have a B.S. Degree in Geology and M. S. Degree would be a plus. Entry level position, with work including soil and groundwater sampling, well installation, aquifer test analysis, and report preparation. Candidate should possess strong writing and presentation skills. Candidate with Hydrogeology coursework or GIS background is a positive. Position will be based in San Diego, and will require travel and field work. Only entry level candidates will be considered. Valid driver's license and U.S. Citizenship required. OSHA 40-hour training preferred, but not mandatory.

Hargis + Associates offer competitive salaries and benefits, and a challenging work atmosphere. Hargis + Associates in an Equal Opportunity Employer. To learn more about Hargis + Associates, please visit our website at: www.hargis.com.

No phone calls please. Qualified candidates should send resumes, along with a cover letter summarizing experience and salary requirements to: Hargis + Associates, Inc., Attention: Phil Rosenberg, 2365 Northside Drive, Suite C-100, San Diego, CA 92108

Rincon Consultants, Inc. is an environmental sciences, planning, and engineering consulting firm with offices in Ventura, San Luis Obispo, and Carlsbad, California. The firm, a leader in environmental impact assessment, planning, biological resources, and soil assessment and remediation, seeks **Mid-Level** and **Senior Level Environmental Scientists** to work in the **Carlsbad** office.

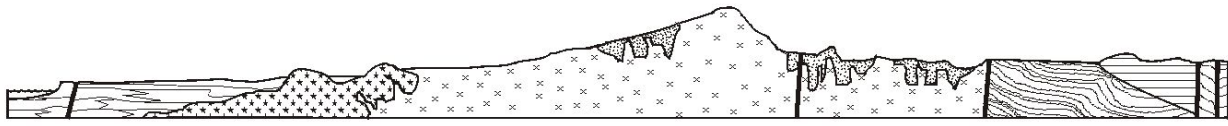
Mid-Level Requirements:

- Bachelor's degree in Geology, Biology, Environmental Science, Environmental Engineering, or related field (advanced degrees welcomed).
- 3-6 years experience in Phase I ESAs and soil/groundwater assessment/remediation.
- Excellent verbal and written communication skills.
- Field capabilities including logging borings, collecting soil and groundwater samples, and mapping and collecting soil samples for large remediation projects.
- OSHA health and safety training for hazardous waste sites.
- Well-organized, analytical, hard-worker, sense of humor, and good team player/leader.

Senior Level Requirements:

- In addition to fulfilling the Mid-Level Requirements above:
- Manage projects and personnel: prepare proposals, job assignments and schedules, track budgets, coordinate personnel and subcontractors, attend meetings, interact with clients and agencies, enforce use of guidelines and proper permits, troubleshoot problems, etc.
- Professional registration preferred.

E-mail your Microsoft Word cover letter and resume to Julie Marshall at jmarshall@rinconconsultants.com



SAN DIEGO ASSOCIATION OF GEOLOGISTS

www.sandiegogeologists.org

2007 MEMBERSHIP FORM

NAME: _____

Please type or print clearly, and check your chosen delivery address below.

Home Address: _____

Include in directory _____

Work Address: _____

Include in directory _____

Please include company or other affiliation

Preferred Mailing Address (Check One): Home Work

E-mail Address: _____

Website: _____

Field(s) of Interest: _____

Phone: Home: () _____ Work: () _____ Cell: () _____

NEW POLICY: Your membership dues include email delivery of the monthly newsletter. If you wish to receive a hardcopy of the newsletter through US Mail, please add \$10.00 to your membership dues.

Dues:	_____ Student Member (email delivery only)	\$ 5.00
(check choice)	_____ Regular Member (email delivery only)	\$ 25.00
	_____ Subscription to hardcopy newsletter	\$ 10.00
	_____ Corporate Sponsor (email delivery only)	\$100.00

(Name as you would like it to appear in guidebook and website)

New Member Continuing Member

Date: _____ Check for change of mailing address:

Please enclose a check payable to SDAG, and mail to:

Sarah Gray
Marine and Environmental Studies Department
University of San Diego
5998 Alcalá Park
San Diego, CA 92110

**San Diego Association of Geologists
c/o Scott Snyder
Ninyo & Moore
5710 Ruffin Road
San Diego, CA 92123**