

# SAN DIEGO ASSOCIATION OF GEOLOGISTS

[www.sandiegogeologists.org](http://www.sandiegogeologists.org)

## SDAG MEETING ANNOUNCEMENT

**Wednesday, March 15, 2006**

### *Animal Rescue and Health and Safety after Hurricane Katrina*

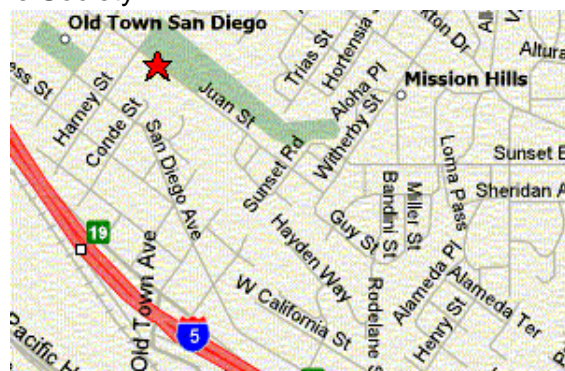
presented by

**Tony Sawyer**

County of San Diego Department of Environmental Health and  
the San Diego Humane Society

**Where:** Acapulco Restaurant Y Cantina  
2467 Juan Street  
San Diego, CA 92110  
(619) 260-8126

**When:** 6:00 pm – Social Hour  
7:00 pm – Dinner  
8:00 pm – Program



**Directions:** Acapulco is located at 2467 Juan Street in Old Town, parking in underground garage or on the street (the city recently put gray paint over a lot of red curbs, opening up lots of space). We will be in the El Pueblo Room, not at the main restaurant, which is on level P3 from the parking ramp, or get directions from the restaurant. It's part of the Hacienda Hotel (Best Western), the home of the Association of Earth Science Editors (AESE) convention later this year.

**Dinner:** Combination Buffet, which consists of garden salad, roasted Yucatan chicken and carnitas, guacamole, sour cream and pico de gallo, flour and corn tortillas, rice and beans, cheese enchiladas, and fresh fruit tray.

**Cost:** \$25.00 per member/guests, \$15 per student. Add \$5.00 if you make no reservation.

**Reservations:** Make your reservation online at [www.sandiegogeologists.org](http://www.sandiegogeologists.org) or call the SDAG Reservation Hotline at (619) 255-8380, **no later than 5:00 p.m. Monday, March 13<sup>th</sup>**.

**RESERVATIONS CANNOT BE ACCEPTED AFTER Monday AT 5 PM.**  
**IF YOU DO NOT MAKE A RESERVATION, WE CANNOT GUARANTEE YOU A MEAL.**

### 2006 EXECUTIVE COMMITTEE

**PRESIDENT** - Phil Farquharson; CG-Squared Productions Ph(619)224-8463 fax(619)255-8380 [geoguy@cg-squared.com](mailto:geoguy@cg-squared.com)

**VICE PRESIDENT**- David Bloom; Anteon; Ph: (619) 571-3470; [vp@sandiegogeologists.org](mailto:vp@sandiegogeologists.org)

**SECRETARY** – Scott Snyder; Ninyo & Moore; Ph: (858) 576-1000; [sdag2006@prodigy.net](mailto:sdag2006@prodigy.net)

**TREASURER** - Sarah Gray; University of San Diego, Ph: (619) 260-4098; fax: (619)260-6874; [sgray@san Diego.edu](mailto:sgray@san Diego.edu)

**PUBLICATIONS**-Lowell Lindsay; Sunbelt Publications; Ph:(619)258-4911 x111; fax:(619)258-4916; [llindsay@sunbeltpub.com](mailto:llindsay@sunbeltpub.com)

**WEBMASTER** – Carolyn Glockhoff; Caro-Lion Enterprises, Ph: (858) 549-3396; [carolyn@caro-lion.com](mailto:carolyn@caro-lion.com)

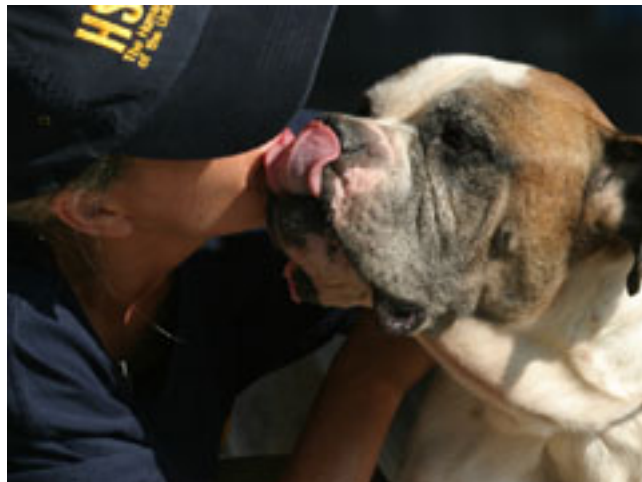
## **BIOGRAPHICAL SUMMARY: TONY SAWYER**

Tony Sawyer grew up in San Diego and received his B.S. in geophysics from SDSU in 1981. While working for local consulting firms (Geotechnical Exploration, Inc., Woodward-Clyde Consultants, and Kleinfelder, Inc.) he continued taking graduate courses at SDSU, emphasizing in hydrogeology. He became an independent consultant in hydrogeology until April, 2000, when he took a hydrogeologist position with the County of San Diego, Site Assessment and Mitigation Program. He is a licensed Professional Geologist in California and Arizona and is a California Certified Engineering Geologist and Certified Hydrogeologist. He currently serves as the Chairman of the Technical Advisory Committee to the California Board for Geologists and Geophysicists. He has been a volunteer with the San Diego Humane Society Animal Rescue Reserve for the last eleven years. The group rescues domestic animals (horses, cats, dogs, etc.) from hazardous situations such as wildfires, floods, mud bogs, cliffs and wells. He is the Lieutenant in charge of Operations in the organization.

### **SUMMARY:**

#### **ANIMAL RESCUE AND HEALTH AND SAFETY AFTER HURRICANE KATRINA**

Following Hurricane Katrina, the San Diego Humane Society was contacted by the American Humane Society and the Humane Society of the United States about assisting with the rescue efforts in the disaster areas. A team of eight was selected to respond to the call. After driving across country for four days, the team arrived in Louisiana to assist wherever needed. In addition to the rescue work that was initially intended, the group had to deal with significant public health, hazardous materials and hostile environment conditions, in addition to the logistical nightmares that have been discussed in the media. Although it was not a geologic disaster (except for the rapid sedimentary depositions during the flooding), the lessons learned from responding to Katrina will be invaluable when a major earthquake, fire or flood hits Southern California.



#### **20th ANNUAL SDSU GEOLOGY ALUMNI FIELD TRIP: FEB 25<sup>TH</sup> & 26<sup>TH</sup> 2006 is History!**

The following 30 people (go ahead and count them, I know you want to) were in attendance at Picacho State Recreation Area for this years alumni field trip led by Doug Stephenson: Doug, Bill Elliott, Mike Hart, Monte Montek Marshall, Kip Hering, Perry Crampton, Jude Gassaway, George Morgan, J. R. Morgan, Curtis Burdett, Sue Tanges, Tony Sawyer, Harry Snowden, Joe Coronos, Joe Walsh, Robert Crisman, Dave Bloom, Steve Harrison, Joe Berkley, Gray Stanard, Brian Matusek, Dan Flowers, Marc Ledergerber, Doug Tanges, Leon Coronos, Shan Sawyer, Jane Harrison, Sean Crisman, Joe Amendolare, Blythe Reed. A good time was had by all, weather was unbelievable and the geology was spectacular!

## 2006 SDAG MEETING SCHEDULE - Mark your Calendars!

Meetings are usually on the 3<sup>rd</sup> Wednesday of the month but may change to accommodate speaker and meeting place schedules. Check here for updates!

April 19	Annual Student Presentation
May 17	Monte "Montek the Terrible" Marshall : Life as-a among penguins

### PRESIDENT'S CORNER:

**Doug Stephenson** made a great presentation on the Orocopia Schist at our February meeting at Tom Ham's Lighthouse, and has gotten rave reviews for the field trip he just conducted to his field area for the SDSU geo-alumni field trip. Congrats, Doug!

This month, please join us at the **Acapulco Restaurant in Old Town** (across the street from Heritage Park). The speaker will be Tony Sawyer, PG, CEG, CHg, hydrogeologist with the Site Assessment and Mitigation Program, Land and Water Quality Division, Department of Environmental Health, County of San Diego, who went to New Orleans after Hurricane Katrina for purposes of animal rescue, but expanded his mission to include public health and hazmat issues. It promises to be a fascinating and timely talk!

**Coming up in April**, we'll have our annual student presentation, and then in May, Monte Marshall, a.k.a. Montek the Terrible will talk about life among the penguins, now that he has returned from his sojourn in Antarctica. Meeting places to be announced at the March meeting (he said bravely).

Let's have a great turnout for Tony on the Ides of March!

*Phil Farquharson*

### ANNOUNCEMENTS:

#### **San Diego Association of Geologists Announces Call for Papers For the SDAG 2006 Annual Field Trip Guidebook: Southern Anza-Borrego Desert and Coyote Mountains, California**

SDAG seeks new manuscripts based on original work in the broad fields of regional geology, tectonics, neotectonics, hydrogeology, paleontology, engineering geology, petrology, geothermal resources, geomorphology, paleoclimatology, mining and mineral resources, landslides, and related fields. Articles on any facet of the natural or cultural history of Anza-Borrego Desert State Park, Carrizo Marsh, Coyote Mountains, Yuha Basin, Valley of the Moon, Superstition Mountains, and vicinity are also welcome. **Deadline for submission of titles is April 26, 2006.** Please submit the title, authors and affiliation, and address, e-mail, and telephone and fax numbers for the corresponding author information when submitting titles. Submit title by e-mail to [vp@sandiegoeologists.org](mailto:vp@sandiegoeologists.org) **Deadline for submission of abstracts is May 9, 2006.**

Anza-Borrego Desert State Park and the surrounding area contain a broad spectrum of geologic and other natural features worthy of National Park status. We will explore the faulting and structural complexity of the northwestern Coyote Mountains, descend into the Borrego Badlands for a visit to the Mio-Pliocene fossil beds, venture into the mud caves of Arroyo Tapiado, and ponder the mysteries of The Domelands. The field trip stops have not been finalized. However, we plan to camp, probably near the Coyote Mountains or at Agua Caliente Campground. Meals will be provided. Carpooling is strongly recommended.

For more information, please call Dave Bloom at 619-571-3470

---

**The San Diego Chapter of AEG** will be having a combined meeting with the ASCE Geotechnical Group on March 22. Dr. Timothy Stark will present on "Impact of Cut and Fill Operations on Hillside Development." The meeting is scheduled to take place at the Miramar Officer's Club, MCAS Miramar. Please contact Jonathan Goodmacher ([jgoodmacher@ninyoandmoore.com](mailto:jgoodmacher@ninyoandmoore.com)) for further information.

---

The Anza-Borrego Desert Natural History Association presents a lecture and slide presentation on the **Impossible Railroad (San Diego & Arizona):** history, operations, passenger trips by rail to **Carrizo Gorge** in 2000, and update on current/future operations. The event will be Friday, March 10 from 7:30-9:00 PM at the Borrego Springs Performing Arts Center in Borrego Springs. It is sponsored by Sempra Energy. It is free to ABDNHA members and children, \$5 otherwise. More info at [abdnh.org](http://abdnh.org)

---

GSA GeoHostel: **The Tectonic Development of Southern California**, from the Beaches of San Diego to the San Andreas Fault, **11–16 March 2006**, Best Western Seven Seas, San Diego, Best Western Date Tree Hotel, Indio, (5 days, 6 nights). Scientific Co-Leaders: Monte Marshall, SDSU, Emeritus. Mario V. Caputo, Mt. San Antonio College, Walnut, California. Michael J. Walawender, SDSU, Emeritus. US\$1495 for GSA members; US\$1545 for spouses; US\$1595 for nonmembers.

---

The national **Association of Earth Science Editors (AESE)**, a GSA and AGI affiliate organization, is holding its 40th annual meeting in San Diego at the Hacienda Hotel in Old Town November 8-11, 2006. The mission of AESE is to enhance the communication of earth science information and education and to strengthen the profession of earth science editing. Membership is \$35/year and offers a Web page [www.aese.org](http://www.aese.org) to members who freelance within the profession. Please contact Lowell Lindsay or Phil Farquharson for further information.

---

The Groundwater Resources Association of California has several events coming up that may be of interest: March 8-10, Principles of Groundwater Flow and Transport Modeling in Orange, CA...March 29, GRA Legislative Symposium and Lobby Day in Sacramento...April 4-5, Nitrate in California's Groundwater in Modesto...June 7-8, Emerging Contaminants in Groundwater in Concord. Check [www.grac.org](http://www.grac.org) for more information on these events.

---

### **Educational Opportunity – Flow of Non-Aqueous Phase Liquids**

Confused about the science related to Dense and Light Non-Aqueous Phase Liquids (DNAPLs and LNAPLs) in the subsurface? Taken aback by the concepts of soil capillary characteristics, NAPL saturation, non-wetting phase residual saturation, relative permeability? Do you have a need to predict the mobility of DNAPLs and LNAPLs in the subsurface, or their longevity as a source of dissolved groundwater contamination? The Department of Geological Sciences at San Diego State University is providing an opportunity for professionals in Southern California to further their understanding of these concepts through a two-weekend workshop. This workshop will be offered on March 25-26 and April 1-2, 2006 by David Huntley, Professor of Geological Sciences and Associate Editor of both Ground Water and Ground Water Monitoring and Remediation, and a specialist in NAPLs.

Interested students may enroll in this class through SDSU Open University through March 25. The cost is \$585. The Open University enrollment form can be obtained directly from Dr. Huntley [dhuntley@geology.sdsu.edu](mailto:dhuntley@geology.sdsu.edu), as well as more detailed directions for enrollment.

---

The **2006 Roy J. Shlemon Specialty Conference** is being held May 3-5, 2006 in Durango, Colorado at the Historic Strater Hotel. The conference subject is "Mass Wasting in Disturbed Watersheds" chaired by Bill Haneberg, Sue Cannon, Paul Santi, and Jeff Coe. To receive more information and to register for the conference, go to the web site: [www.haneberg.com/watersheds](http://www.haneberg.com/watersheds) or go to AEG's web site ([aegweb.org](http://aegweb.org)) and click on the Mass Wasting logo.

---

You are invited to join the **Seismological Society of America in San Francisco** to commemorate the 100th anniversary of the 1906 earthquake and kick off the SSA's centennial celebration at the "The 100th Anniversary Earthquake Conference". SSA will be meeting jointly with the Earthquake Engineering Research Institute for their 8th National Earthquake Conference and the California emergency management community for their annual Disaster Resistant California conference at the Moscone Convention Center on April 18-22. The conference is also being co-sponsored by more than 50 organizations from around the world, including AEG. Registration and hotel information is online at the 100th Anniversary Earthquake Conference website: [www.1906eqconf.org](http://www.1906eqconf.org).

---



The **Inland Geological Society** and **Inland Empire of AEG** have announced their 6-month schedules of meetings through June 2006. See their website for more details about locations, topics and speakers, [www.inlandgeo.org](http://www.inlandgeo.org) and [www.aegsc.org/chapters/inlandempire](http://www.aegsc.org/chapters/inlandempire)

There will be three positions available on the California Board for Geologists and Geophysicists' Technical Advisory Committee as of July 1, 2006. Because the Board has received so few applications, they have extended the application period to May 4. This is an excellent opportunity to learn about the inner workings of the Board, and to contribute to your profession. If you are interested in volunteering, please submit your resume to the Board by May 4, 2006. [www.geology.ca.gov](http://www.geology.ca.gov)

From the **State Mining and Geology Board**: The March 9 meeting Public Notice is now posted on our web site: [www.conservation.ca.gov/smgb](http://www.conservation.ca.gov/smgb)

### THE 16TH ANNUAL AEHS WEST COAST CONFERENCE ON SOILS, SEDIMENTS, AND WATER

March 13-16, 2006 at the Mission Valley Marriott, San Diego. Visit their website [www.aehs.com](http://www.aehs.com) to register. Over 200 Presentations...10 Workshops...40 Exhibitors...Don't miss our Welcome Reception on Monday, March 13th at 5pm (must be a registered attendee).

### 2006 CORPORATE SPONSORS - THANK YOU!!

Corporate sponsors provide a significant portion of SDAG's operating and scholarship budget. In addition to monthly recognition for your contribution, you are entitled to a free Internet "link" from [SDAG's Website](http://www.sdag.org). We also list Corporate Sponsors in our annual SDAG Field Trip Volume. ***Please consider SDAG sponsorship in 2006!***

A special thank you to **Ninyo & Moore** for sponsoring the preparation, duplication, and mailing of the newsletter for 2006 and 2007!

<a href="#">Ninyo &amp; Moore</a> , Jonathan Goodmacher	Lowell Lindsay, <a href="#">Sunbelt Publications</a>
Katherine Freese	Lee Vanderhurst, Geotechnics, Inc.
<a href="#">Hargis + Associates, Inc.</a> , Mike Palmer	David and Jan Steller
<a href="#">Southwest Geophysics, Inc.</a>	Phil Farquharson, <a href="#">CG-Squared Productions</a>
Dr. Margaret Eggers <a href="#">Eggers Environmental, Inc.</a>	Sue Tanges, Southland Geotechnical Consultants
Joe Coronas, <a href="#">City of San Diego</a>	John Hoobs - <a href="#">Geocon, Inc.</a>
Donald Sorben	Monte and Diane Murbach
William J. Elliott, Engineering Geologist	Carole L. Ziegler
Geopacifica, Inc. - James Knowlton	Vinje & Middleton Engineering, Inc
John Peterson, Peterson Environmental Services	Tom Rockwell, <a href="#">Earth Consultants International</a>
Pat Brooks and Julie Crosby	Laura Maghsoudlou, <a href="#">EnviroMINE, Inc.</a>
<a href="#">Dr. Monte Marshall</a>	<a href="#">Dr. Anne Sturz</a>
<a href="#">Dr. Richard Berry</a>	<a href="#">Carolyn Glockhoff</a> , Caro-Lion Enterprises
First National Oil, Inc.	<a href="#">Sherry Bloom</a> , Coldwell Banker Real Estate
<a href="#">GeoSoils, Inc.</a> , Robert Crisman and John Franklin	<a href="#">Fugro West, Inc.</a> / Fugro Pelagos, Inc. – Jerry Wilson
Robert Walters Equipment Rental	Helenschmidt Geotechnical, Inc.
<a href="#">Christian Wheeler Engineering</a>	Geotechnical Exploration, Inc.
<a href="#">Dr. Sarah Gray - University of San Diego</a>	Doug Peeler, Bechtel Environmental, Inc.
<a href="#">Geocon, Inc.</a>	

## JOB OPENINGS!

**Advantage Environmental Consultants (AEC)** is seeking entry to senior-level environmental scientists/geologists/engineers. Entry level candidates should have a BA, BS or MS in physical sciences or engineering and a strong desire to learn the technical aspects of the environmental consulting business and basic project management duties. Mid to senior-level candidates should have prior consulting experience with soil and groundwater investigation, Phase I ESAs, risk assessment, remediation and/or industrial hygiene related services. AEC offers competitive compensation and 100% paid employee health coverage. Please mail resume to 810 Los Vallecitos Boulevard., Suite 210, San Marcos, CA 92069.

---

---

**Hargis + Associates, Inc.**, a San Diego based consulting firm specializing in **hydrogeology and engineering**, and **SDAG Corporate Sponsor** currently has opportunities in our San Diego, California and Mesa Ari office. We are currently looking to fill the following positions:

**Hydrogeologist/GIS Environmental Scientist:** Candidate would have a B.S. Degree in Geology or related field, and expertise in ArcView GIS and related applications. Ideal candidate would have experience with sampling, well installation, aquifer test analysis, and/or groundwater modeling. Position will be based in Mesa, Arizona, and may require some travel and field work. OSHA 40-hour training preferred. Entry level candidates with a strong GIS background will be considered.

**Project Hydrogeologist:** Candidate would have a B.S. Degree in Geology, and 5 to 7 years relevant experience, including experience with sampling, well installation, work plan and report preparation, project management, cost estimating and scheduling. California Professional Geologist (PG), or ability to obtain within one year preferred. Masters degree or computer groundwater modeling experience is a plus. Candidate should possess strong organizational, writing and presentation skills. Position will be based in San Diego, and will require some travel and field work. OSHA 40-hour training required.

Hargis + Associates offer competitive salaries and benefits, and a challenging work atmosphere. Hargis + Associates in an Equal Opportunity Employer. To learn more about Hargis + Associates, please visit our website at: [www.hargis.com](http://www.hargis.com).

No phone calls please. Qualified candidates should send resumes, along with a cover letter summarizing experience and salary requirements to: Hargis + Associates, Inc., Attention: Phil Rosenberg, 2365 Northside Drive, Suite C-100, San Diego, CA 92108

---

---

**Rincon Consultants, Inc.** is an environmental sciences, planning, and engineering consulting firm with offices in Ventura, San Luis Obispo, and Carlsbad, California. The firm, a leader in environmental impact assessment, planning, biological resources, and soil assessment and remediation, seeks **Mid-Level** and **Senior Level Environmental Scientists** to work in the **Carlsbad** office.

### **Mid-Level Requirements:**

- Bachelor's degree in Geology, Biology, Environmental Science, Environmental Engineering, or related field (advanced degrees welcomed).
- 3-6 years experience in Phase I ESAs and soil/groundwater assessment/remediation.
- Excellent verbal and written communication skills.
- Field capabilities including logging borings, collecting soil and groundwater samples, and mapping and collecting soil samples for large remediation projects.
- OSHA health and safety training for hazardous waste sites.
- Well-organized, analytical, hard-worker, sense of humor, and good team player/leader.

### **Senior Level Requirements:**

- In addition to fulfilling the Mid-Level Requirements above:
- Manage projects and personnel: prepare proposals, job assignments and schedules, track budgets, coordinate personnel and subcontractors, attend meetings, interact with clients and agencies, enforce use of guidelines and proper permits, troubleshoot problems, etc.
- Professional registration preferred.

E-mail your Microsoft Word cover letter and resume to Julie Marshall at [jmarshall@rinconconsultants.com](mailto:jmarshall@rinconconsultants.com)

---

---

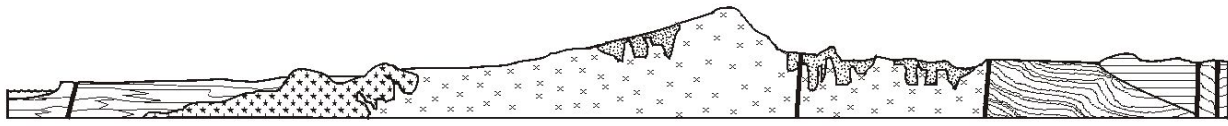
**ARCADIS** presently has a number of open positions for entry level and more senior positions. Please have anyone interested contact:

Christopher Taylor Sharpe, Staff Scientist, ARCADIS  
6 Terry Drive, Suite 300, Newtown, PA 18940  
Phone: (267) 685-1800  
Fax: (267) 685-1801

---

---

**Petra Geotechnical** is currently seeking experienced geotechnical engineers, geologists, environmental scientists and soils technicians in our Costa Mesa, Santa Clarita, Murrieta and San Diego offices. We offer competitive salaries and excellent benefits. Contact Linda Becker, Human Resources Manager, at 714/549-8921 or use [lbecker@petra-inc.com](mailto:lbecker@petra-inc.com) to submit your resume by email.



# SAN DIEGO ASSOCIATION OF GEOLOGISTS

www.sandiegogeologists.org

## 2006 MEMBERSHIP FORM

NAME: \_\_\_\_\_

Please type or print clearly, and check your chosen delivery address below.

Home Address: \_\_\_\_\_

Include in directory \_\_\_\_\_

Work Address: \_\_\_\_\_

Include in directory \_\_\_\_\_

*Please include company or other affiliation*

Preferred Mailing Address (Check One):  Home  Work

E-mail Address:  \_\_\_\_\_  
*Check box for email delivery*

Website: \_\_\_\_\_

Field(s) of Interest: \_\_\_\_\_  
\_\_\_\_\_

Phone: Home: (\_\_\_\_) \_\_\_\_\_ Work: (\_\_\_\_) \_\_\_\_\_ Cell: (\_\_\_\_) \_\_\_\_\_

<b>Dues:</b>	_____ Student Member (email delivery only)	<b>\$ 5.00</b>
<b>(check choice)</b>	_____ Student Member (add US mail delivery)	<b>\$ 10.00</b>
	_____ Regular Member (email delivery only)	<b>\$ 15.00</b>
	_____ Regular Member (add US mail delivery)	<b>\$ 20.00</b>
	_____ Corporate Sponsor ( <input type="checkbox"/> email + <input type="checkbox"/> US mail delivery)	<b>\$100.00</b>

New Member  Continuing Member  
Date: \_\_\_\_\_ Check for change of mailing address:

Please enclose a check payable to SDAG, and mail to:

Sarah Gray  
Marine and Environmental Studies Department  
University of San Diego  
5998 Alcalá Park  
San Diego, CA 92110

**San Diego Association of Geologists  
c/o Scott Snyder  
Ninyo & Moore  
5710 Ruffin Road  
San Diego, CA 92123**