

SAN DIEGO ASSOCIATION OF GEOLOGISTS

<http://www.sandiegoogeologists.org/>

2001 EXECUTIVE COMMITTEE

PRESIDENT

Bob Stroh
Kleinfelder, Inc.
Ph: (858) 320-2000
fax: (858) 320-2001
rstroh@kleinfelder.com

VICE PRESIDENT

Patrick Brooks
Anteon Corp.
Ph: (619) 532-0930
fax: (619) 532-0995
brooksgp@efds.w.navy.mil

WEBMASTER

Carolyn Glockhoff
Ph: (858) 549-3396
carolion@znet.com

TREASURER

Monte Murbach
Southern California
Soil & Testing
Ph: (619)-280-4321
fax: (619)-280-4717
mmurbach@aol.com

SECRETARY

Margaret Eggers
Hargis + Associates
Ph: (619)-521-0165
fax: (619) 521-8580
megggers@hargis.com

PUBLICATIONS

Lowell Lindsay
Sunbelt Publications
Ph: (619) 258-4911 x111
fax: (619) 258-4916
sunbeltpub@prodigy.net

SDAG MEETING ANNOUNCEMENT

Wednesday February 20, 2002

Where: **94th Aero Squadron**
8885 Balboa Avenue
San Diego
Phone: (858) 560-6771

When: 6:00 pm – Social Hour
7:00 pm – Dinner
8:00 pm – Program

Directions: Directions: Take Balboa off of 163. Go East. The Aero Squadron is a few blocks east on Balboa, on the south side of the road. The restaurant backs up to the runway of Montgomery Field Airport. Parking is out front of the restaurant.

Dinner: Petite Prime Rib of Beef or Fresh Mahi Mahi includes house garden salad, fresh vegetables, rice pilaf or new potatoes, dinner rolls and butter, coffee or tea, and dessert.

Cost: \$25 per person, students \$15 with ID

Reservations: Make your reservation **online** through the SDAG website at sandiegoogeologists.org or call the SDAG Reservation Line at: (619) 521-0165, ext. 190, by Monday, February 18. Contact Margaret Eggers at (619) 521-0165, ext. 132 with any questions.

Speaker: **Mr. David L. Perry RG, CEG**

Mr. Perry is an engineering geologist who has worked on the Olivenhain Dam Project since 1998 for AMEC Earth and Environmental as part of the Parsons-Harza Design Team. He holds a bachelor's degree in geological sciences from the University of California at Santa Barbara and has completed graduate courses/studies from Cal State Los Angeles. Presently, Mr. Perry serves as senior engineering geologist on projects related to dams and reservoirs, tunnels, educational facilities, and light industrial-commercial structures. Prior to joining AMEC in 1998, Mr. Perry worked in the Los Angeles region for 14 years on various geotechnical and environmental projects including U.S. Air Force Bases and the LA Metro-Rail.

Presentation: GEOLOGY AND CONSTRUCTION OF THE OLIVENHAIN DAM FOUNDATION, SAN DIEGO COUNTY, CALIFORNIA

The Olivenhain Dam will be a new roller-compacted concrete (RCC) gravity dam located near San Diego, California. At 318-feet-high (97-meters), the Olivenhain Dam will be the largest RCC dam in America and the first RCC dam in the state of California. The Olivenhain dam will create a 24,000-acre-ft reservoir as part of a 12 year, Emergency Storage Project (ESP) for the San Diego County Water Authority. The ESP is being developed to protect the residents in the San Diego region against a disruption in water deliveries from outside the County, including earthquake and drought.

Geotechnical investigations during the design phase included geologic mapping of surface and trench exposures, seismic refraction surveying, vertical and inclined rotary diamond-bit core borings, and down-hole hydrogeologic and geophysical testing. Field studies were supported by laboratory testing of site materials. Detailed geotechnical summary maps were prepared as part of the construction bid documents. Detailed foundation geologic maps were prepared following completion of excavation.

The foundation objective for the Olivenhain Dam is excavation to slightly weathered granodiorite. The dam and reservoir site also include subordinate volumes of other plutonic rocks and hypabyssal dikes ranging from mafic and felsic in composition. Typical excavation to the slightly weathered rock varied between 10 to 40 feet. Local areas of moderately to highly weathered rock required over excavation to depths up to approximately 90 feet below original ground. This presentation will include a brief description of the project and a discussion of some of the design and construction methods associated with the project. The presentation will also provide an overview of the geologic mapping techniques and objectives, geologic conditions exposed at foundation grade, and the result of geologic conditions upon the foundation treatment and refinement of the grouting program.

2002 CORPORATE SPONSORS

Many thanks to our 2002 Corporate Sponsors! And a Special THANK YOU! to Geotechnics, Inc. for their \$1000 contribution to the SDAG. A significant portion of the SDAG operating budget is provided by corporate sponsorship. Please consider becoming a Corporate Sponsor! In addition to monthly recognition for your contribution, you will be entitled to a free internet "link" from the SDAG Website, and all Corporate Sponsors are listed in the front of the annual SDAG Field Trip Volume.

Geotechnics, Inc.	
David and Jan Steller	Dr. Anne Sturz
Katy Freese	Eldon Gath, Earth Consultants Inc.
Carole L. Ziegler	Hargis + Associates, Inc.
Joe Coronas	Terra Costa Consulting Group, Inc.
William J. Elliott	Dr. Margaret R. Eggers, CHG
Southland Geotechnical Consultants	

Upcoming 2002 Meetings:

March 20th	Tom Hams Lighthouse - Dr. Gary Peterson, SDSU, "Why Mars is Red"
April 17 th	Student Presentations, Eva's Cantina and Cocina
May 8 th (not 3 rd week)	Tentative Joint Meeting with SCGS at El Adobe in San Juan Capistrano
June 8th	SDAG/SDSU Picnic at Mission Bay
July 17th	Greg Cranham, "Old Mission Dam and Flume", Tentative Mission Trails Park
September	SDAG Field Trip
December	Annual Holiday Meeting
Aug., Oct. and Nov.	To be announced

ANNOUNCEMENTS:

2002 SDAG Dues: LAST CHANCE! DID YOU FORGET??? Renew your SDAG membership NOW!! The membership renewal form is included with this newsletter and a copy may be downloaded from the web site: www.sandiegogeologists.org. **If you do not renew by March 1st, you will not receive future SDAG newsletters! Renew Today!**

SDAG NEWSLETTER IS DIGITAL! If we don't have your e-mail address, or if you have problems with the electronic format please contact Margaret Eggers at: meggers@hargis.com.

SDAG Wear: - Monte has a variety of shirts, hats, visors and even a nice vest with the SDAG logo. A small selection is available for purchase at the meetings; all SDAG wear can be ordered from Monte.

SDAG Scholarships: - Please see Bob Stroh regarding potential candidates for 2002 SDAG scholarships.

2001 Field Trip Guide: The 2001 Field Trip Guide will be available in March 2002.

2002 Field Trip: Pat Brooks is planning the 2002 SDAG Field Trip that will feature the geology and mineral resources of northern Baja California. We are hoping to make this a joint field trip with UABC in Ensenada. Please contact Pat if you are interested in sponsoring a field trip stop, coordinating with UABC, or joining the Field Trip Committee. Reconnaissance trips will begin in January or February.

SDSU Geology Department Seminar Series – Wednesday Afternoons - The seminar announcement page is at: <http://www.geology.sdsu.edu/seminars/>

The South Coast Geological Society and Association of Engineering Geologists-Southern California Section will hold a joint meeting on Tu, Feb 12 at the El Adobe Restaurant in San Juan Capistrano. Jerry DeGraff of the US Forest Service will speak on debris flows in the western Sierra. For reservations, call 949-250-1421.

The Association for Women Geoscientists and the Coast Geological Society will hold a joint meeting "Highlights of a Field Trip to Argentina – A Tribute to Dottie Stout" at the American Legion Hall in Ventura on Feb 19. For reservations, call 805-653-7975.

THE SDSU DEPT OF GEOLOGICAL SCIENCES Annual Banquet (hosted by the SDSU Geology Alumni Association) is scheduled for Friday, March 1 at the Holiday Inn Mission Valley Stadium. Banquet highlights will include this year's honored alumnus, Mr. Albert Boost, retired from Caltrans, and Dr. Patrick Abbott presenting his new video, The Rise and Fall of San Diego. EVERYONE IS WELCOME TO JOIN US! For more details, contact Sue Tanges, 619-442-8022, s.tanges@att.net

Raft Trip - \$2002 in Y2002! Join your geo-pals on an eight-day Grand Canyon raft trip in late June 2002. Yes, we anticipate that the cost will be close to \$2002 – if you would like more info, contact Sue Tanges, 619-442-8022 or e-mail, s.tanges@att.net

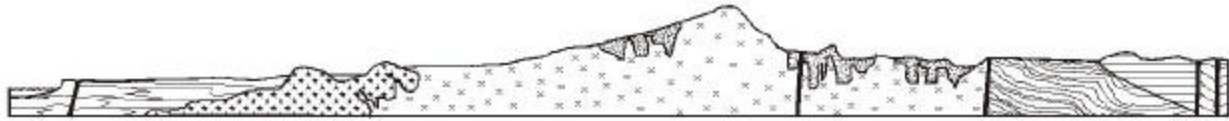
The Dibblee Geological Foundation has two **new** maps out in print!

Santa Cruz Island West and **Santa Cruz Island East**. All full color folded maps are now \$15 each and flat maps are \$20 each. Please send orders to Jim Blakley, 958 Isletta Avenue, Santa Barbara, CA 93109.

POSITIONS AVAILABLE:

- **Part-Time Teaching Position in Geological Sciences** - The Department of Geological Sciences at California State University, San Bernardino is interested in hiring a part-time temporary lecturer to teach a course in **Engineering Geology** during the Spring Quarter 2002 (April 2 - June 11). The course has been scheduled for Tuesday-Thursday from 4:00-5:20 lecture; 5:30-8:30 laboratory. Modifications to this schedule can be made to accommodate field-based practical work. Although a Ph.D. in geology is required, applicants with a masters and practical experience or ABD candidates will also be considered. To apply, send curriculum vitae, official transcripts of undergraduate and graduate studies, student evaluations of teaching (if available) and 3 letters of recommendation to: Dr. Alan L. Smith, Department of Geological Sciences, California State University, 5500 University Parkway, San Bernardino, CA 924078-2397. **To receive full consideration, applications must be received by March 1, 2002.** California State University, San Bernardino is an equal opportunity employer committed to a diversified workforce.
- Environmental Health Specialist II with San Diego County DEH-SAM. This position oversees the assessment and mitigation of contaminated properties in San Diego County. Job description and requirements can be found on the county website at: http://www.co.san-diego.ca.us/cnty/cntydepts/general/human_resources/examDB/PrintOpenJobs.htm. If you have further inquires, please contact Mike Verneti by phone at (619) 338-2242 or by e-mail at: mverneeh@co.san-diego.ca.us.
- **CITY OF SAN DIEGO #T2278 JUNIOR ENGINEERING GEOLOGIST** (\$3607 to \$4366, Monthly); #T2279 **ASSISTANT ENGINEERING GEOLOGIST** 9\$4174 to \$5028, Monthly). **LAST DATE to apply: February 20, 2002.** Applications received later than 5:00 p.m. on the last date to apply will be rejected. Please apply promptly since vacancies may be filled as soon as a sufficient number of applicants has been processed. Persons may apply only once during this application filing period. Future application filing periods may be announced. Employees with a valid State of California registration as a Geologist, Engineering Geologist or Civil Engineer are eligible for an additional 15% pay. **REQUIREMENTS:** For each position, you must meet the requirement(s) listed below on the date you apply, unless otherwise indicated. **EDUCATION:** You may meet the education requirement with **ONE** of the following options: 1) College graduation with Bachelor 's degree in Geology, Engineering Geology, Civil Engineering or a closely related degree. **(You must submit proof of your degree.) OR 2)** Registration as a professional Geologist, Engineering Geologist or Civil Engineer with the State of California. **(You must submit a copy of your California State license.)** **ASSISTANT ENGINEERING GEOLOGIST APPLICANTS MUST ALSO MEET THE FOLLOWING EXPERIENCE REQUIREMENTS:** Two years of full-time experience in geological or geotechnical engineering work. Qualifying experience must be in at least one of the following areas: 1)Reviewing grading and drainage plans and/or building plans for adverse geological and geotechnical conditions; 2) Preparing final as-graded geotechnical or geological reports to verify post-grading and geotechnical conditions; 3) Maintaining geological maps; 4) Advising non-technical individuals on geological hazards and conditions; 5)Preparing geological and/or geotechnical reports for development, including slope stability analysis, liquefaction evaluation, and fault hazard evaluation; 6) Field grading control experience including backout mapping, soil removal, buttress construction, and subdrain placement. <http://www.ci.san-diego.ca.us/empopp/currjob/open.shtml>
- Geocon Consultants, Inc., a San Diego-based environmental services firm, is seeking **Senior Staff** Geotechnical Engineer with 2 to 4 years experience. BSCE required, MSCE preferred. Registration desirable. Previous experience in land development a plus. **Project Geotechnical Engineer** with 3 to 5 years experience. BSCE required, MSCE preferred. Registration required. Experience in land development a plus. **Engineering Field Technician** with 2+ years experience desired but not mandatory. Land development and/or hillside experience a plus. E-mail resume to hr@geoconinc.com or fax (858) 558-6159 or mail to Human Resources, 6960 Flanders Drive, San Diego. 92121. [Geocon](http://www.geoconinc.com), Inc. is a **SDAG Corporate Sponsor**.

- **STAFF ENGINEERS & SOIL TECHNICIANS** – Southern California Soil & Testing, Inc. (SCST) has 2 - 3 positions available for experienced staff engineers and soil technicians with several years experience towards registration and certification. SCST offers a comprehensive compensation and benefit package, and the opportunity to work on a wide range of projects. Submit resumes in confidence to SCST, 6280 Riverdale Street, San Diego, California 92160-0627, Attn: Steve Jensen, or fax to (619) 280-4717.
- [Ninyo & Moore](#) has the following positions to be filled include in San Diego: Project-level **Geotechnical Engineers** and Geologists (5+ years experience); Staff and Senior Staff-level Geotechnical Engineers and Geologists (2+years experience); Field Technicians with appropriate soils and materials testing certifications; Deputy Inspectors for concrete, masonry, welding and structural steel (ICBO certification required, DSA and City of San Diego certification a plus). Please submit resumes in confidence to our Corporate Personnel Director at: Ninyo & Moore, 5710 Ruffin Road, San Diego, California, 92123, or via e-mail at careers@ninyoandmoore.com. EOE.
- **Remedial Project Manager (RPM)**, Base Realignment and Closure (BRAC) Operations Office, Naval Facilities Engineering Command, Southwest Division, San Diego, CA. The RPM is responsible for managing environmental (restoration and compliance) projects at these facilities, including overseeing day-to-day activities and reviewing/preparing documents associated with the Installation Restoration Program (IRP). The RPM manages various contractor personnel as part of overseeing the day-to-day activities. These efforts include report writing, field activities, and meetings with Navy/Marine Corps personnel, as well as regulators, the public and significant stakeholders. The RPM is responsible for facility IRP management, applying innovative technical principles, practices, theories or state of the art methods to resolve technical and administrative issues. Experience should include knowledge of CERCLA and RCRA regulatory environments, environmental compliance such as USTs, air, water, stormwater, and/or NEPA; knowledge of technical requirements for investigation and remediation of soil and/or groundwater. At least five years working in the environmental engineering field, including recent project management experience is required. Experience with DoD facilities and the IRP is highly desired. Send resumes via e-mail to: DWhittaker@west.anteon.com, or to Anteon Corporation Human Resources Department; 3430 Camino del Rio North; San Diego, CA 92108
Attn: Don Whittaker



SAN DIEGO ASSOCIATION OF GEOLOGISTS

<http://www.sandiegoeologists.org/>

2002 MEMBERSHIP FORM

NAME: _____

Please type or print **clearly**, and **check** your chosen delivery address below.

Residential Address: _____

Mailing Address: _____

E-mail Address: _____

Field(s) of Interest: _____

Phone: Home: () _____ Work: () _____

Dues:	_____ Student Member (email delivery only)	\$ 5.00
(check choice)	_____ Student Member (add US mail delivery)	\$ 10.00
	_____ Regular Member (email delivery only)	\$ 15.00
	_____ Regular Member (add US mail delivery)	\$ 20.00
	_____ Corporate Sponsor (email and US mail delivery)	\$100.00

New Member Continuing Member

Date: _____ Check for change of mailing address:

Please enclose a check payable to SDAG, and mail to:

Monte Murbach
3130 North Evergreen Street
San Diego, CA 92110

**San Diego Association of Geologists
c/o Hargis + Associates, Inc.
Margaret R. Eggers, PhD, CHG
2365 Northside Drive
Suite C-100
San Diego, CA 92108**