

SAN DIEGO ASSOCIATION OF GEOLOGISTS

<http://www.znet.com/~sdag>

2001 EXECUTIVE COMMITTEE

PRESIDENT

Barbara B. Birnbaum
Ph: (619) 276-5476
fax: (619) 276-9713
tokalonz@pacbell.net

VICE PRESIDENT

Bob Stroh
Ninyo & Moore
Ph: (858) 576-1000
fax: (858) 576-9600
rstroh@ninyoandmoore.com

SECRETARY

Patrick Brooks
Kleinfelder, Inc.
Ph: (619) 744-3083
fax: (619) 687-8787
gpbrooks@bechtel.com

TREASURER

Monte Murbach
Murbach Geotech
Ph: (619) 222-2044
mmurbach@aol.com

WEBMASTER

Carolyn Glockhoff
Ph: (858) 549-3396
carolion@znet.com

PUBLICATIONS

Lowell Lindsay
Sunbelt Publications
Ph: (858) 576-1000
fax: (858) 576-9600
sunbeltpub@prodigy.net

SDAG MEETING ANNOUNCEMENT

Wednesday, February 21, 2001

Where: Clarion Hotel, Bayview Room – 8th Floor
660 K Street at 6th and K in the Gaslamp District
San Diego
Phone: (619) 696-0234

When: 6:00 pm – Social Hour
7:00 pm – Dinner
8:00 pm – Program

Dinner: Choice of one of the following entrees: Sliced London Broil or Chicken San Diego with tossed salad, dessert, and coffee or tea. Vegetarian on request. Please indicate your choice when making your reservation.

Cost: \$ 25.00 per person (Students with ID: \$15.00)

Reservations: Make your reservation **online** through the SDAG website at <http://www.znet.com/~sdag> or call the SDAG Reservation Line at: (858) 974-6994, ext. 1760, before 5:00 pm Monday, February 19. Contact Pat Brooks at (619) 744-3083 with any questions.

Speaker: **Dr. Michael J. Walawender**

The speaker has been a professor at SDSU for the past 29 years and was Head of the Department of Geological Sciences from 1989-1995. He has supervised nearly 100 Masters and Bachelors theses on a wide variety of topics generally centered on the nature and origin of the Peninsular Ranges Batholith. He is author of the book "The Peninsular Ranges: A Geological Guide to San Diego's Back Country" (Kendall Hunt Publishing Co., 2000).

Program: **From Mud to Magma, the evolution of gem pegmatites in Southern California.**

Abstract:

For the past century, the pegmatites of San Diego County have produced a remarkable array of mineral specimens that grace museum and private collections around the world. The rock bodies that produced these treasures were formed in a very short period of geologic time during a plate boundary shift that created the eastern half of the Peninsular Ranges batholith.

Pegmatite, by strict definition, refers to any very coarse-grained igneous rock but is commonly used in conjunction with rocks of granitic composition. The large crystal size and structural features that characterize granitic pegmatites are due to the presence of a water-rich fluid that exsolved out of the silicate melt during the early stages of crystallization. Increased rates of ionic diffusion within the water-rich fluid produced unusually large crystals, weird crystal forms, and a crude lithologic zoning in the final rock. The abundant water in the magmas is a result of dehydration melting in muscovite-rich metapelites, rocks lovingly known as the Julian Schist. The heat source needed to pump the temperatures above the pre-existing amphibolite-grade conditions can be found in the remarkable set of events that created the enormous La Posta plutons that now form the eastern half of the batholith.

UPCOMING 2001 MEETINGS:

March 21st	Monte Marshall of SDSU - Alaska
April 18th	Student papers by SDSU scholarship winners
May 16th	Phil Rosenberg of TAIC - cool GIS stuff
June 9th (Sat.)	Annual SDAG/SDSU Alumni Picnic (date tentative)
July	Dan Johnson, Jay Jones, and Chris Spengler of EBS – Brownfield Issues of the Downtown San Diego Ballpark
August 15th	Alan Pace of Golder - tunneling for SD trolley
September	Annual SDAG Field Trip - weekend TBA
October 17th	TBA
November 21st	TBA
December 19th	SDAG elections, student scholarships, Tom Demere - SDNHM

2001 Corporate Sponsors

Pat Abbott	Rob Hawk, City of San Diego
Bayhawk Ales	HP Labs (TEG/Mobile One)
Earth Consultants International	Barbara J. Johnston
Dr. Margaret R. Eggers, CHG	Kleinfelder Inc.
William J. Elliott	Murbach Geotech
First National Oil, Inc.	Ninyo & Moore
Katherine Freese	Donald R. Sorben, R.G.
Geocon Inc.	Southland Geotechnical Consultants
Geotechnics, Inc.	Anne Sturz
Group Delta Consultants, Inc.	Testing Engineers – San Diego
Hargis + Associates, Inc.	Carole L. Ziegler

Please consider becoming a Corporate Sponsor or renewing your sponsorship of SDAG for 2001! In addition to monthly recognition for your contribution, you will be entitled to a free internet "link" from the SDAG Website, and we list our sponsors at the front of the SDAG Field Trip Volume.

ANNOUNCEMENTS:

SDAG NEWSLETTER IS DIGITAL! As most of you are aware, the monthly newsletter is being transmitted via e-mail to all members (for whom we have e-mail addresses). You will need the Adobe Acrobat Reader to open it, but that is freely available for download at <http://www.adobe.com>. If we don't have your email address, please provide it to Pat Brooks: gpbrooks@bechtel.com. Starting in January 2001, SDAG began offering the newsletter by e-mail as the primary means of distribution, reducing the postal mailing list as much as possible. This will allow us to control costs (as mailing costs are our largest expense), freeing up more funding for field trips, scholarships, publications, and keeping membership dues low. It's also faster, with the same publication quality that SDAG members have come to expect. You will have an opportunity to specify e-mail distribution on your membership form for 2001 (enclosed), or if you prefer, to continue with a hard copy mailing.

SDAG members that have not renewed their membership, will receive their last courtesy newsletter in February. To continue receiving the newsletter in 2001, please renew your membership today!!!

Last month's meeting at Qwiggs had approximately 70 attendees for the first SDAG meeting of 2001. The food was excellent (if only I could make a salad that tasty), Qwiggs' hospitality was great, and Lee Vanderhurst's discussion on ancient lateral spread debris in Chula Vista and its impacts on engineering construction was excellent. What a great way to start out the new year! If you missed the January meeting, try to catch up with someone who attended.

New professional group meeting monthly: American Water Resources Association (AWRA) has begun a new Southern California Section. Next meeting is Wednesday March 14th at SDSU – beach microbial contamination. Check the web page at <http://www.awra.org/state/socal/> for upcoming meetings and additional information.

First Notice and Call for Papers: The 2001 Desert Symposium, April 20-23, 2001 Desert Studies Center, Zzyzx, California. The 2001 Desert Symposium will be held at California State University's, Desert Studies Center at Zzyzx, on the shores of Soda Lake south of Interstate 15 between Barstow and Baker, California.

Thanks to Charlie Lough: Thank you Charlie for donating every SDAG newsletter from 1971 to 1992. The newsletters are a wonderful addition to our archives and provide a thought-provoking look back at the early years of SDAG.

SDSU Department of Geological Sciences Annual Banquet: Hosted by the SDSU Geology Alumni Association on Friday, March 2, 2001, at the Holiday Inn on Murphy Canyon Road in San Diego. **Dr. Monte Marshall** is this year's honored alumnus! Everyone is welcome. For more info, contact Sue Tanges or Barbara Johnston at 619-442-8022 or s.tanges@att.net.

AEG - Southern California Section: Mike Hart (past SDAG President) will be speaking at the meeting on Tuesday, February 13, 2001, at Stevens Steak House in City of Commerce. His talk is titled Bedding-Parallel Shear Zones as Landslide Mechanisms in Horizontal Sedimentary Rocks. (FYI - typically there are carpools from the San Diego area!) For more info, call AEG-SC Chair, David Seymour, (714) 549-8921.

Tom Schar Memorial Scholarship: If you are a graduate of the SDSU Geology Department in early to mid-1990s and were a friend or colleague of Tom Schar (who passed away this past summer from cancer) and would be interested in donating a few dollars to a memorial scholarship in his name, please contact Marianne Binkin. The Tom Schar Memorial Scholarship will be awarded to a SDSU graduate student this spring to fund summer fieldwork. The deadline for donations is March 15, 2001. Marianne can be reached via email at mbinkin@aeraenergy.com or by phone (661) 665-5925 (wk) or (661) 837-8543 (hm).

POSITIONS AVAILABLE:

- US Laboratories seeks Senior, Project, and Staff level Geotechnical Engineers and Geologists with 5 to 10 plus years experience, and experienced Field Technicians and Inspectors with appropriate certifications. Positions available in Ventura, Irvine, San Diego, and Las Vegas. Please submit resumes in confidence to: US Laboratories, Inc. (USLB), 7895 Convoy Court, Suite 18, San Diego, CA 92111, Attention Human Resources c/o M. O'Brien, or by email to mobrien@uslaboratories.com. [Testing Engineers – San Diego](#) is a SDAG Corporate Sponsor.
- Kleinfelder, an employee-owned environmental and geotechnical firm, seeks environmental geologist. Successful candidate will have a BS/MS in geology or hydrogeology and 3-5 years experience in RCRA/CERCLA. Excellent writing and fieldwork skills required. Remediation experience is a plus. E-mail resumes to Pat Brooks – gpbrooks@bechtel.com. [Kleinfelder](#) is a SDAG corporate sponsor.
- Geocon Consultants, Inc., a San Diego-based environmental services firm, is seeking Project Level Engineers or Geologists with site assessment and/or remediation experience. Minimum 5 years experience and registration required. California consulting experience preferred. Email resume to environmental@geoconinc.com or fax (858) 558-8437 ([Geocon](#), Inc. is a SDAG Corporate Sponsor).
- GEOSYNTEC CONSULTANTS, a national environmental consulting firm, seeks individuals for our San Diego office with BS/MS in geology or hydrogeology, with 1-3 years experience in environmental field work, including lithologic logging; monitoring well installation; soil, sediment, surface water, and ground-water sampling; aquifer and slug tests; and management of subcontractors. Ideal candidate will have good oral/written skills. Travel required; physically fit & clean driving record. Competitive salary with excellent benefit package. Fax resumes to (858) 674-6586 or email to twest@geosyntec.com.
- STAFF ENGINEERS & SOIL TECHNICIANS – Southern California Soil & Testing, Inc. (SCST) has 2 - 3 positions available for experienced staff engineers and soil technicians with several years experience towards registration and certification. SCST offers a comprehensive compensation and benefit package, and the opportunity to work on a wide range of projects. Submit resumes in confidence to SCST, 6280 Riverdale Street, San Diego, California 92160-0627, Atten: Steve Jensen, or fax to (619) 280-4717.

CALL FOR PAPERS - DEADLINE FEBRUARY 28, 2001:

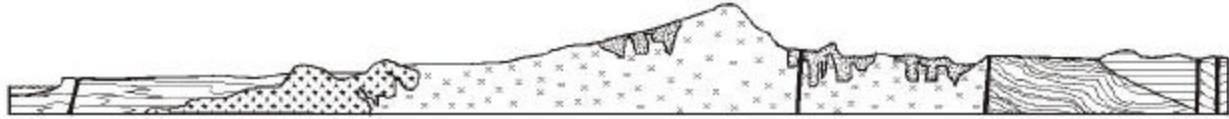
This is to announce that the 2001 SDAG field trip theme is ***Engineering Geology of San Diego County***. Bob Stroh, Vice President of SDAG, is the field trip chair.

OVERVIEW: The field trip is tentatively scheduled for early September. Every effort will be made to avoid conflicts with SCGS, AEG, and the GSA annual meeting. This trip will return to and focus on San Diego County. The trip will look at the geology of the region, including faults, landslides and unique features. There will be an emphasis on engineering geology. At this point, I welcome any additional ideas for topics.

PAPERS: All papers (of any length) relating to engineering geology and geotechnical engineering set in San Diego County are welcome, although other geologic topics will be considered. If you are interested in writing or submitting a paper for the field guide, please contact Bob Stroh (see newsletter header for contact info).

FORMAT: Text and tables should be provided by 3.5" diskettes in Microsoft Word or text format, with an identical hard copy included. Final page size will be 8-1/2" x 11", with color and/or black and white illustrations, photographs and tables. Illustrations should be print quality and camera-ready hard copy. Consult the General Editor before using Oversize maps.

For guidance on matters of style and composition, consult the *U.S. Geological Survey Suggestions to Authors* (now in its 7th edition), and/or the *Chicago Manual of Style* (now in its 4th Edition). For technical matters, it is anticipated that an informal peer reviewer will read a draft of each paper and provide comments and suggestions to the author(s).



SAN DIEGO ASSOCIATION OF GEOLOGISTS

<http://www.znet.com/~sdag>

2001 MEMBERSHIP FORM

NAME: _____

Please type or print **clearly**, and **check** your chosen delivery address below.

Residential Address: _____

Mailing Address: _____

E-mail Address: _____

Field(s) of Interest: _____

Phone: Home: () _____ Work: () _____

Dues: _____ **Student Member (email delivery only)** \$ 5.00

(check choice) _____ **Student Member (add US mail delivery)** \$ 10.00

_____ **Regular Member (email delivery only)** \$ 15.00

_____ **Regular Member (add US mail delivery)** \$ 20.00

_____ **Corporate Sponsor (email and US mail delivery)** \$100.00

New Member Continuing Member

Date: _____ Check for change of mailing address:

Please enclose a check payable to SDAG, and mail to:

Patrick Brooks

Kleinfelder, Inc.
1230 Columbia Street, Suite 400
San Diego, California 92101

**San Diego Association of Geologists
c/o Patrick Brooks**

**Kleinfelder, Inc.
1230 Columbia Street, Suite 400
San Diego, California 92101**

Payments also accepted at monthly SDAG meetings.