

SAN DIEGO ASSOCIATION OF GEOLOGISTS

<http://www.znet.com/~sdag>

PRESIDENT

Barbara B. Birnbaum
Ph: (619) 276-5476
fax: (619) 276-9713
tokalonz@pacbell.net

VICE PRESIDENT

Bob Stroh
Ninyo & Moore
Ph: (858) 576-1000
fax: (858) 576-9600
rstroh@ninyoandmoore.com

SECRETARY

Patrick Brooks
Kleinfelder, Inc.
Ph: (619) 744-3083
fax: (619) 687-8787
gpbrooks@bechtel.com

TREASURER

Monte Murbach
Murbach Geotech
Ph: (619) 222-2044
mmurbach@aol.com

WEBMASTER

Carolyn Glockhoff
Ph: (858) 549-3396
carolion@znet.com

PUBLICATIONS

Lowell Lindsay
Sunbelt Publications
Ph: (858) 576-1000
fax: (858) 576-9600
sunbeltpub@prodigy.net

SDAG MEETING ANNOUNCEMENT

Wednesday, January 17, 2001

Where: **Qwigs Bar & Grill**
5091 Santa Monica Avenue
Ocean Beach
Phone: 619/222-1101

When: 6:00 pm – Social Hour
7:00 pm – Dinner
8:00 pm – Program

Dinner: Choice of one of the following entrees: Prime rib or chicken with tossed salad, fresh vegetables, and coffee.

Cost: \$ 25.00 per person (Students with ID: \$ 15.00)

Reservations: Make your reservation **online** through the SDAG website at <http://www.znet.com/~sdag> or call the SDAG Reservation Line at Ninyo & Moore: 858/974-6994, Ext. 1760, before 5:00 pm Monday, January 15. Contact Bob Stroh at Ninyo & Moore with any questions.

Speaker: **Lee Vanderhurst**

A graduate of SDSU (BS, 1976) and San Jose State University (MS, 1982). For 25 years, he has consulted for governmental agencies, private utilities, the Defense Department, and private developers in both northern and southern California. He has spent the last 20 years in San Diego. Lee has been mapping 24- to 30-inch wide, 100-foot long outcrops in the Chula Vista area since 1974.

Program: **Ancient Lateral Spread Debris and its Impacts on Engineering Construction, Chula Vista, California. Vanderhurst, W. Lee; Hart, Michael W.; Warren, Chad W.**

Abstract:

Recent grading in a subdivision in southwest San Diego County, created a 500+ meter long exposure of a pre-Pliocene lateral spreading. Isolated exposures of deformed sedimentary rock have been observed north and south of the subdivision over the last decade but have been identified as Quaternary landslides or faulted Tertiary formations. It is now believed that a single lateral spread, covering approximately 107 square kilometers occurred sometime between 7 and 28 Ma. The feature is believed to extend from the Sweetwater River Valley southward to the U.S./Mexico boarder. The debris appears above a continuous bentonitic clay layer within the Oligocene Otay Formation. Large, intact to moderately fractured blocks of interbedded sandstone and siltstone are bound by steeply dipping faults that terminate in the bentonite. The debris is capped by the Pliocene San Diego Formation, which was deposited on a planar, wave-cut terrace. One of the difficulties in evaluating the impact on engineering construction is locating the lateral extent of the ancient lateral spread. Erosion during cutting of the Pliocene terrace eliminated any topographic features that might have been preserved. The lateral spread does not correspond with the mapped limits of the San Diego Formation either. In aerial photographs, the only diagnostic feature that might be used to identify the lateral spread is the abundance of large-scale, deep-seated landslides in slopes underlain by the unit. The lateral spread may be miss-interpreted as faulting using shallow trenching techniques. The lateral spread is located on the eastern edge of the La Nacion fault which is characterized by north-south trending, steeply dipping normal faults similar to those bounding the lateral spread blocks. Evaluation of faulting in areas suspected to be within the lateral spread should include deep borings to see if the basal bentonite clay has been displaced. The lateral spread debris contains a sheared basal rupture surface, discontinuous and unpredictable internal shears and fractures within the large blocks of debris that will impact cut slopes. Since much of the structure cannot be evaluated by drilling, in-grading mapping and engineering analysis are necessary to provide appropriate recommendations for stabilization.

UPCOMING 2001 MEETINGS:

Feb 20th (Tues.)	Mike Walawender of SDSU - gem pegmatites
Mar 21st	Monte Marshall of SDSU - Alaska
Apr 18th	Student papers by SDSU scholarship winners
May 16th	Phil Rosenberg of TAIC - cool GIS stuff
Jun 9th (Sat.)	Annual SDAG/SDSU Alumni Picnic (date tentative)
July	TBA
Aug 15th	Alan Pace of Golder - tunneling for SD trolley
Sep	Annual SDAG Field Trip - weekend TBA
Oct 17th	TBA
Nov 21st	TBA
Dec 19th	SDAG elections, student scholarships, Tom Demere - SDNHM

2001 Corporate Sponsors

Pat Abbott	Katherine Freese
Earth Consultants International	Margaret Eggers
William J. Elliott	Rob Hawk, City of San Diego
Geocon Inc.	Group Delta
Hargis + Associates, Inc.	Carole L. Ziegler
HP Labs (TEG/Mobile One)	Murbach Geotech
Kleinfelder Inc.	Testing Engineers – San Diego
Southland Geotechnical Consultants	Ninyo & Moore
Barbara Johnston	Sunbelt Publications

Please consider becoming a Corporate Sponsor of SDAG for 2001! In addition to monthly recognition for your contribution, you will be entitled to a free internet "link" from the SDAG Website, and we list our sponsors at the front of the SDAG Field Trip Volume.

ANNOUNCEMENTS:

SDAG NEWSLETTER IS ELECTRONIC! As most of you are aware, the monthly newsletter is being transmitted via e-mail to all members (for whom we have e-mail addresses). You will need the Adobe Acrobat Reader to open it, but that is freely available for download at <http://www.adobe.com>. If we don't have your e-mail address, please provide it to Pat Brooks: gpbrooks@bechtel.com. Starting in January 2001, SDAG will offer the newsletter by e-mail as the primary means of distribution, reducing the postal mailing list as much as possible. This will allow us to control costs (as mailing costs are our largest expense), freeing up more funding for field trips, scholarships, publications, and keeping membership dues low. It's also faster, with the same publication quality that SDAG members have come to expect. You will have an opportunity to specify e-mail distribution on your membership form for 2001 (enclosed), or if you prefer, to continue with a hard copy mailing.

Send your membership renewal to SDAG. We will be creating a 2001 SDAG Membership directory. All members who have renewed their memberships by March 1st will be included in the directory. All non-renewed SDAG memberships will not receive a newsletter after February. So get your renewal into SDAG.

Last month's meeting at the San Diego Natural History Museum had approximately 100 attendees for the last SDAG meeting of the year 2000. The delicious Mexican buffet dinner was catered by El Indio, not to mention the awesome beer which was catered by Bayhawk Ales. According to Karl Zappa, Bayhawk general manager, SDAG took a close second in beer consumption to a group of rugby players he recently catered. Greg Cranham wrapped up his fun & successful 4-year term of being an officer, Monte Murbach was elected the new SDAG Treasurer. Two student scholarships (\$500 each) were presented at the meeting going to students from [SDSU](#). The evening culminated with another great annual slide presentation on the paleontology of San Diego County by Tom Demere, curator of the [SDNHM](#). SDAG also made our annual donation of \$500 to the museum to support the ongoing research and natural history studies in San Diego County. Thank you to Tom Demere for his time and for the use of the museum facilities - your efforts are appreciated very much by the SDAG members.

The Quartzsite Gem and Mineral Show will be January 23 through 27, 2001. Located in the middle of town between Ironwood Drive and Cactus Drive off of the Mesquite Drive exit from the I-10 Business Loop. General Information can be obtained from the Quartzsite Chamber of Commerce, Arizona.

New professional group forming & meeting monthly Advancing Water Resources Research and Management is forming a new Southern California Section. Pulling members from - San Luis Obispo & Bakersfield to San Diego & Blythe. Check AWRA SoCal Section Webpage at <http://www.awra.org> for upcoming meetings and further information on other activities.

First Notice and Call for Papers, The 2001 Desert Symposium, April 20 - 23, 2001
Desert Studies Center, Zzyzx, California. The 2001 Desert Symposium will be held at California State University's, Desert Studies Center at Zzyzx, on the shores of Soda Lake south of Interstate 15 between Barstow and Baker, California.

POSITIONS AVAILABLE:

- Geocon Consultants, Inc., a San Diego-based environmental services firm, is currently seeking Project Level Engineers or Geologists with site assessment and/or remediation experience. Minimum 5 years experience and discipline registration required. California consulting experience preferred. E-mail resume to environmental@geoconinc.com or fax (858) 558-8437 (**Geocon, Inc. is a SDAG Corporate Sponsor**).
- GEOSYNTEC CONSULTANTS, a national environmental consulting firm, seeks individuals for our San Diego office with a BS or MS in geology or hydrogeology, with 1-3 years experience in environmental field work. Specific experience should include: lithologic logging; monitoring well installation; soil, sediment, surface water, and ground-water sampling; aquifer pumping test; slug tests; and management of subcontractors. Ideal candidate will have good oral/written skills. Travel required; physically fit & clean driving record. Competitive salary with excellent benefit package. Fax resumes to (858) 674-6586 or email to twest@geosyntec.com EOE M/F/V/D
- STAFF ENGINEERS & SOIL TECHNICIANS – Southern California Soil & Testing, Inc. (SCST) has positions available for experienced staff engineers and soil technicians. SCST is trying to fill 2-3 positions with geotechnical professionals with several years experience towards registration and certification. SCST offers a comprehensive compensation and benefit package, and the opportunity to work on a wide range of projects. Resumes should be forwarded in confidence to SCST, 6280 Riverdale Street, San Diego, California 92160-0627, to the attention of Steve Jensen, or fax to (619) 280-4717.

CALL FOR PAPERS - DEADLINE FOR ABSTRACTS MARCH, 2001:

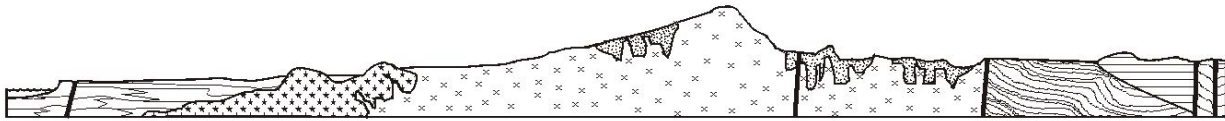
This is to announce that the 2001 San Diego Association of Geologists (SDAG) volume theme, associated with the annual field trip, will be **Engineering Geology of San Diego County** The Field Trip chair will be Bob Stroh, Vice President of SDAG.

OVERVIEW: The field trip is tentatively scheduled for early September. Every effort will be made to avoid conflicts with SCGS, AEG, and the GSA annual meeting. This trip will return to and focus on San Diego County. The trip will look at the geology of the region, including faults, landslides and unique features. There will be an emphasis on engineering geology. At this point, I welcome any additional ideas for topics.

PAPERS: All papers (of any length) relating to engineering geology and geotechnical engineering set in San Diego County are welcome, although other geologic topics will be considered. If you are interested in writing or submitting a paper for the field guide, please contact Bob Stroh (see newsletter header for contact info).

FORMAT: Text and tables should be provided by 3.5" diskettes in Microsoft Word or text format, with an identical hard copy included. Final page size will be 8-1/2" x 11", with color and/or black and white illustrations, photographs and tables. Illustrations should be print quality and camera-ready hard copy. Oversize maps will be considered, but this and other issues that may modify the volume should be discussed with the General Editor in advance.

For guidance on matters of style and composition, consult the *U.S. Geological Survey Suggestions to Authors* (now in its 7th edition), and/or the *Chicago Manual of Style* (now in its 4th Edition). For technical matters, it is anticipated that an informal peer reviewer will read a draft of each paper and provide comments and suggestions to the author(s).



SAN DIEGO ASSOCIATION OF GEOLOGISTS

<http://www.znet.com/~sdag>

2001 MEMBERSHIP FORM

NAME: _____
Please type or print **clearly**, and **check** your chosen delivery address below.

Residential Address: _____

Mailing Address: _____

E-mail Address: _____

Field(s) of Interest: _____

Phone: Home: () _____ Work: () _____

Dues:	_____	Student Member (email delivery only)	\$ 5.00
(check choice)	_____	Student Member (add US mail delivery)	\$ 10.00
	_____	Regular Member (email delivery only)	\$ 15.00
	_____	Regular Member (add US mail delivery)	\$ 20.00
	_____	Corporate Sponsor (email and US mail delivery)	\$100.00

New Member Continuing Member

Date: _____ Check for change of mailing address:

Please enclose a check payable to SDAG, and mail to:

Monte Murbach
3130 North Evergreen Street
San Diego, California 92110

Payments also accepted at monthly SDAG meetings.

**San Diego Association of Geologists
c/o Patrick Brooks
Kleinfelder, Inc.
1230 Columbia Street, Suite 400
San Diego, California 92101**