



SAN DIEGO ASSOCIATION OF GEOLOGISTS

1994 EXECUTIVE COMMITTEE

CHAIRMAN

Joe Coronas
City of San Diego
Waste Management Dept
4950 Murphy Canyon Road
San Diego, CA 92123-4325
(619) 492-5034

VICE CHAIRMAN

Phil Rosenberg
TetraTech, Inc.
6405 Mira Mesa Blvd, Ste 100
San Diego, CA 92121
(619) 622-2278

SECRETARY

Anne Sturz
Univ. San Diego
Marine/Environmental Stds
Alcala Park
San Diego, CA 92110-2492
(619) 260-4600 x4481

TREASURER

Tissa Munasinghe
Univ. San Diego
Marine/Environmental Stds
Alcala Park
San Diego, CA 92110-2492
(619) 260-4600 x4099

MEETING NOTICE

WEDNESDAY, OCTOBER 19, 1994

SPEAKER: Mr. David E. Petroy

TOPIC: GROUND PENETRATING RADAR FOR GEOTECHNICAL AND ENVIRONMENTAL APPLICATIONS
(Will include a demonstrations after the talk)

PLACE: Best Western Hotel (619) 277-1199
3905 Murphy Canyon Rd.
(NW corner I-15 and Aero Dr.)
San Diego

TIME: 6:00-Social Hour
7:00-Dinner
8:00-Program

DINNER: BAJA BUFFET - Mixed Greens, Tacos/Tostadas (chicken, and Beef), cheese enchiladas, rice, beans, churros, Kahlua Mousse, coffee, tea.

COST: \$20.00 Please make checks payable to SDAG.

RESERVATIONS REQUIRED by noon Monday October 17th. Please phone in your reservation to Joe Coronas. 492-5034. Leave name, number in party and affiliation. Please call Joe if you need to cancel your reservation. If you have special diet requirements (i.e. vegetarian), contact Joe Coronas, 492-5034.

SMOKING WILL NOT BE PERMITTED IN THE MEETING ROOM TO CONSERVE THE HEALTH OF OUR MEMBERS. THANK YOU!

ABSTRACT

David E. Petroy is an Applications Geophysicist / Training Manager with Geophysical Surveys, Inc. North Salem, New Hampshire. He has earned his M.A. in Geophysics from Washington University, St. Louis, Missouri, and his B.A., in Zoology/Computer Science minor from S.U.N.Y, College at Oswego.

Geophysical Survey Systems, Inc. Subsurface Interface Radar (SIR) Systems were introduced in 1970 to non-destructively investigate dielectric materials to increase the quantity and quality of subsurface information. Since early 1980, the use of Subsurface Interface Radar or Ground Penetrating Radar (GPR), as it is more commonly referred, has escalated rapidly. The diversity of applications for which GPR is appropriate has made it a valuable tool in many fields. Geologists, archeologists, civil, and environmental engineers are among the major beneficiaries of the capabilities of GPR.

This presentation will emphasize different case studies of GPR, specifically as they apply to geological and environmental applications. We will start with a brief overview of the principles and theories governing the of performance of GPR. A variety of data examples from geological tasks such as fracture mapping, locating bedrock and groundwater, and determining the extent of mineral deposits will be discussed. From environmental studies, examples delineating landfill boundaries and locating burial trenches, underground storage tanks and buried drums will be shown

SPECIAL ANNOUNCEMENT

Dr. Martin Lindy Stout 60, passed away on Friday morning, September 23, 1994 after battling cancer for over 17 years. Marty was a Professor of Geology at the California State University, Los Angeles for 34 years and also a Consulting Geologist. He helped develop the Engineering Geology program at CSULA where many of today's practicing engineering geologists in Southern California obtained their training. Marty's research interests and publications on slope stability, particularly in the San Bernadino Mountains and the Blackhawk Landslide have had a large impact on the understanding of geology in Southern California. He was the first geologist to realize the significance of accumulating radiocarbon-dating techniques and data to the timing of major landslides. Marty is survived by his wife Dorothy; two children Eric and Karen; and three stepdaughters, Donna, Diana, and Deborah Steller, and his sister, Joy Aucoin.

Anyone knowing Marty or having taken a class or being on a field trip with him will find it easy to remember his gentle, persuasive and humorous style and mannerism. We will miss you Marty, Farewell.

In response to Marty's request, please send donations to either:

The Martin L. Stout Scholarship % Chr. Robert Stull
Department of Geological Sciences
California State University, Los Angeles
Los Angeles, Ca 90032

The Martin L. Stout Scholarship % Pres. Robert Larson
Association of Engineering Geologists - LA Chapter
6416 Woodley Ave., Apt. 5
Van Nuys, Ca 91406

SDAG ANNOUNCEMENTS:

1. **SDAG Field Trip:** Limited space remaining. See Field Trip Flyer attached, time is running out, so mail your reservations ASAP.

Deadline for announcements to be included in the November SDAG newsletter is Friday, October 28, please submit your items in writing to Joe Coronas, 13450 Russet Leaf Lane, San Diego, Ca 92129-4410 or fax to 619-492-5041 (Attn. Joe Coronas.)

2. **November SDAG Meeting:** will be held Wednesday November 16th at the spaghetti Factory and will include: Poster Session, SDAG Raffle and a short presentation on Coral Reefs.
So ... Anyone working on a project that would like to share their information/data/results with the geotechnical community please feel free to participate - Please bring your own poster stand. (You also have to pay for your own dinner)

And ... if you have an item or 2 or 3 that you would like to donate to the raffle please bring those along, SDAG appreciates your generosity.

3. **SDGA Picnic** - was considered a success, except for one small, technicality - as amazing as it may seem, there was a small quantity of beer left in the keg when it was returned to the store. 3 die-hard geologists, Monte Morbach, Gary Cannon, and Gary Cranham attempted to dispose of the excess liquid contained within the large silver container before its departure. A valiant attempt and SDAG would like to commend them for their efforts ... better luck next year. In reality there were over 120 people that attended throughout the day and everyone reportedly had a good time! SDAG thanks all those people that brought dishes to share.

4. **Upcoming Meetings:**

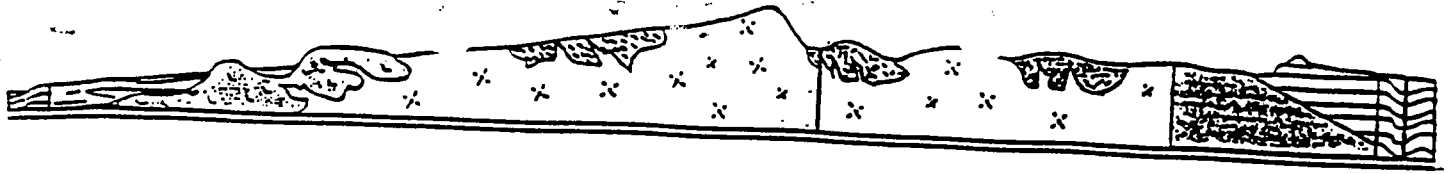
October 12-16, 1994 31st Annual AIPG Meeting, Little Amana Hotel, Flagstaff, Arizona.

October 23-28, 1994 Society of Exploration Geophysicists, International Exposition and sixty-fourth Annual Meeting, Los Angeles, California.

October 24-27, 1994 GSA Annual Meeting, Seattle, Washington.

November 2-4, 1994 California Shore and Beach Preservation Association Meeting, Del Mar, Ca.

December 14, 1994 SDAG Meeting at Museum of Natural History (Please Note Date: 2nd Wednesday of December)



SAN DIEGO ASSOCIATION OF GEOLOGISTS 1994 FIELD TRIP

THE SAN DIEGO ASSOCIATION OF GEOLOGISTS 1994 ANNUAL FIELD TRIP WILL BE HELD ON SATURDAY, 29 OCTOBER 1994. THE TRIP WILL VISIT THE GEOLOGY AND NATURAL HISTORY OF CAMP PENDLETON MARINE CORPS BASE, NORTHERN SAN DIEGO COUNTY. THIS TRIP WILL BE LIMITED TO 50 PARTICIPANTS.

WE WILL MEET EARLY SATURDAY MORNING AT A YET TO BE ANNOUNCED LOCATION, AND BOARD A BUS FOR THE TRIP. A CONTINENTAL BREAKFAST WILL BE SERVED, AS WELL AS A BOX LUNCH, BEVERAGES AND SNACK TREATS.

THE COST WILL BE \$45.00 PER PERSON AND WILL INCLUDE A COPY OF THE FORTHCOMING PUBLICATION "GEOLOGY AND NATURAL HISTORY OF CAMP PENDLETON MARINE CORPS BASE, SAN DIEGO COUNTY, CALIFORNIA".

SEATING ON THE BUS WILL BE LIMITED, AND ON A FIRST COME, FIRST SERVE BASIS. IF YOU WOULD LIKE TO PARTICIPATE ON THIS FIELD TRIP PLEASE COMPLETE THE FORM BELOW AND MAIL AS SOON AS POSSIBLE TO:

**PHIL ROSENBERG, FIELD TRIP CHAIRMAN
1550 LOWER LAKE COURT
CARDIFF-BY-THE-SEA, CA 92007-1142**

**IF YOU SHOULD HAVE ANY QUESTIONS,
PLEASE CONTACT PHIL ROSENBERG AT 622-2278.**

NAME: _____ NUMBER OF PARTICIPANTS: _____

AFFILIATION: _____ PHONE: _____

**ADDRESS: _____
_____**

**PLEASE ENCLOSE A CHECK MADE PAYABLE TO
SAN DIEGO ASSOCIATION OF GEOLOGISTS**



Tanges, Susan E.
1465 E. Lexington Ave.
El Cajon, CA 92019

San Diego Association of Geologists
6466 Bonnie View Dr.
San Diego, CA 92119

92019-1989.02

