



SAN DIEGO ASSOCIATION OF GEOLOGISTS

1994 EXECUTIVE COMMITTEE

CHAIRMAN

Joe Corones
City of San Diego
Waste Management Dept
4950 Murphy Canyon Road
San Diego, CA 92123-4325
(619) 492-5034

VICE CHAIRMAN

Phil Rosenberg
TetraTech, Inc.
6405 Mira Mesa Blvd, Ste 100
San Diego, CA 92121
(619) 622-2278

SECRETARY

Anne Sturz
Univ. San Diego
Marine/Environmental Stds
Alcala Park
San Diego, CA 92110-2492
(619) 260-4600 x4481

TREASURER

Tissa Munasinghe
Univ. San Diego
Marine/Environmental Stds
Alcala Park
San Diego, CA 92110-2492
(619) 260-4600 x2674

MEETING NOTICE

WEDNESDAY, MARCH 16, 1994

- SPEAKER:** Gregory A. Fasano, Science Applications International.
- TOPIC:** Of Mountains and Science: A programmatic, geotechnical and environmental look at nuclear waste studies at Yucca Mountain, Nevada.
- PLACE:** Tickled Trout Ramada Inn 291-6500 **TIME:** 6:00-Social Hour
2151 Hotel Circle South 7:00-Dinner
San Diego, CA 92108 8:00-Program
- DINNER:** Mexican Buffet: Salad, Chicken enchiladas, taco bar, rice beans, tortilla, bunuelos, coffee, tea, milk.
- COST:** \$15.00

RESERVATIONS REQUIRED by noon Monday, March 14th. Please phone in your reservation to Anne Sturz, 461-2644. Leave name, number in party and affiliation. Please call Anne if you need to cancel your reservation. If you have special diet requirements (i.e. vegetarian), contact Joe Corones, 492-5034.

ABSTRACT

The search for a site to safely and permanently store commercial spent nuclear fuel and defense high-level nuclear waste is of great importance to this nation. The U. S. Department of Energy, with close to 2000 federal employees and contractor staff, has embarked on a 10-13 year, \$6 billion site characterization effort to establish the suitability (or unsuitability) of the Yucca Mountain site for the storage of nuclear wastes in a deep mined geologic repository.

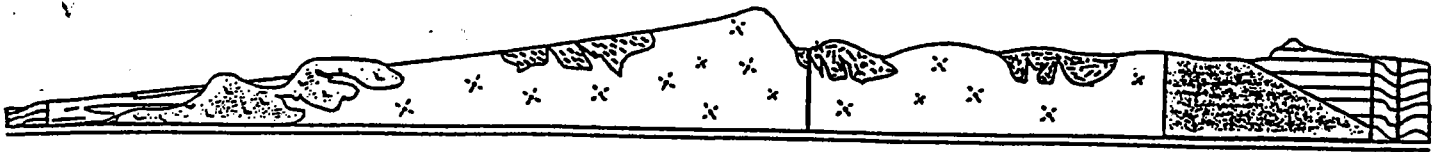
Yucca Mountain is located approximately 100 miles northwest of Las Vegas. It is the faulted and eroded remnant of an extensive volcanic plateau created by the deposition of a thick sequence (>6,500 ft) of Miocene pyroclastic rocks. A particularly densely welded tuffaceous unit within the mountain exhibits favorable characteristics for the storage of nuclear wastes. Numerous and often difficult questions must be resolved regarding the geological, hydrological, tectonic, and environmental regimes at Yucca Mountain. Engineering and nuclear waste transportation scenarios must also be addressed.

Mr. Gregory A. Fasano, Science Applications International Corporation, Las Vegas, Nevada, works with environmental compliance and permitting activities on the Yucca Mountain Project. For the past 10 years, Mr. Fasano has worked on the repository program providing environmental and geosciences integration support for the site characterization effort. He graduated from San Diego State University with a B. S. Degree in Geology in 1982 and obtained an M. B. A. from National University in 1988.

SMOKING WILL NOT BE PERMITTED IN THE MEETING ROOM TO CONSERVE THE HEALTH OF OUR MEMBERS. THANK YOU!

ANNOUNCEMENTS:

1. **Corporate Sponsors:** As we begin another year of activities, we would like to remind everyone that Corporate Sponsorships contribute greatly to the quality and efficiency of the yearly operation of SDAG. Corporate Sponsor contributions are used to sponsor students at our monthly meetings, support our annual picnic and field trip, offset guidebook publication costs and upgrade SDAG equipment. If you or your company would like to become a Corporate Sponsor and be recognized in our SDAG newsletter, directory and at the monthly meetings, send a minimum of \$100.00 contribution to SDAG, c/o Anne Sturz, 6466 Bonnie View Dr. San Diego, CA 92119.
2. **Thank you** to all Corporate Sponsors received this year: Transglobal Environmental Chemistry, Pacific Soils and Engineering, Woodward-Clyde Consultants, William J. Elliot, Carole Ziegler, Gallagher Drilling Service, Perry and Nona Crampton, IT Corporation, Anne Sturz, Robertson Geotechnical Inc., Tony V. Sawyer Consulting Hydrologist, Daryl Streiff Consultant, Catlin Engineering Inc., Allied Geotechnical Engineers Inc., American Geotechnical, John Minch and Associates. Group Delta Consultants, Zeiser Kling Consultants, Inc.
3. **Last Chance** SDAG 1994 Membership Dues were due in January. For those who have not yet renewed, a 1994 membership form is included with this newsletter. Please complete and mail with your check to SDAG c/o Anne Sturz 6466 Bonnie View Dr. San Diego, CA 92119. Dues may also be paid at the monthly meetings. If you are unsure whether or not you have already renewed your membership, please see Anne at the next meeting.
4. The **April 20, 1994 SDAG meeting** will feature the SDAG Student Scholarship recipients Kenji Hirabayashi (graduate award) and Jeanne Chick (undergraduate award). They will be giving 20 minute presentations on their thesis work. Mr. Hirabayashi will speak on *Quaternary activity of the San Miguel Fault, northern Baja California*. Ms. Chick will speak on *History of metal concentrations as revealed from sediments of Buena Vista Lagoon, San Diego County*.
5. **Deadline** for announcements to be included in the April Newsletter is **Friday April 1st**. Please submit your items in writing to Anne Sturz by mail (6466 Bonnie View Dr. San Diego, CA 92119) or fax (260-6804).
6. The **1994 Annual SDAG Field Trip** will revisit the Geology and Natural History of Camp Pendleton Marine Base. The field trip will be held in either late October or early November. We are currently seeking papers for the field trip guide. Papers may be on any topic related to the geology or natural history of the base, and can be any size up to approximately 50 pages. In addition, we would like a short paper on the history of the base. If anyone is interested in submitting a paper, please contact Phil Rosenberg (622-2278). Thank you.
7. The **Cordilleran Section Geological Society of America meeting** will be held in San Bernardino this year, March 21-23. There are a number of field trips before and after the meeting that may be of interest to geologists in the San Diego area. For information contact: Joan Fryxell, Department of Geological Sciences, California State University, 5500 University Parkway, San Bernardino, CA 92407-2397, (909) 880-5311.
8. The **California Geotechnical Engineers Association Annual Conference** will be held on March 17-19, 1994 at the Hyatt Regency Suites in Palm Springs. Registration is open to all members and non-members. For additional information and registration material contact Sharon Ladenes, Executive Director, California Geotechnical Engineers Association, 714 777-3423.
9. The **Desert Research Symposium** will be held May 20-23, 1994 at the San Bernardino County Museum, Redlands, CA. For further information contact Jennifer Reynolds, San Bernardino County Museum, 2024 Orange Tree Lane, Redlands, CA 92374, or call 909-798-8570.
10. **Inland Geological Society's March meeting** will be held March 17, 1994 and present Dr. John P. Maas speaking on *Geophysical Methods, Groundwater and Interpretation*. Meetings are held at the San Bernardino County Museum, California Street exit off I-10 in Redlands, 2024 Orange Tree Lane.
11. There has been interest in forming a group of local geologists to be available for Earth Science and Geology presentations to schools in the San Diego area. Many SDAG members may already be involved or know of such a program that is in existence at this time. If you have any information on existing programs or would like to participate in establishing one please contact Daryl Strieff at 619-758-2432 or Joe Coronas at 619-484-3582.
12. The **Annual San Diego State Geology Banquet** will be on Thursday, April 7th at Casa Real in Aztec Center on SDSU campus. Our speaker will be Dottie Stout talking about her recent trip to Kamchatka. Cocktail hour starts at 6 PM dinner, starts at 7 PM. After the program, we will have our traditional silent auction for you bargain hunters!
13. **South Coast Geological Society meeting** for March will be Monday March 7th in Tustin CA. and will feature Jim Dolan discussing the Northridge Earthquake and other Seismic data in the Los Angeles Basin. For dinner reservations call 714 250-1421 Leighton and Associates, by Friday March 4th.
14. **Employment Opportunity:** Geocon Incorporated is seeking a senior staff level engineer with 1-3 years geotechnical experience; BS in civil engineering required, MS preferable, registration desired but not required. Contact Jim Likins, 619-558-6900. or mail resume to 6960 Flanders Drive, San Diego, CA 92121.



SAN DIEGO ASSOCIATION OF GEOLOGISTS

1993 EXECUTIVE COMMITTEE

JOE CORONES
CHAIRMAN

PHIL ROSENBERG
VICE CHAIRMAN

ANNE STURZ
SECRETARY

TISSA MUNASINGHE
TREASURER

ORDER FORM SDAG PUBLICATIONS

<u>QUANTITY</u>	<u>TITLE</u>	<u>COST EACH</u>	<u>TOTAL</u>
	Natural History of the Coronado Islands, Baja California, Mexico (1978). Limited Availability	\$10	
	Landslides in Crystalline Basement Terrain, San Diego County (1988)	\$12	
	Seismic Risk in the San Diego Region-Proceedings (1989)	\$10	
	Geotechnical Engineering Case Histories, San Diego County (1990)	\$12	
	Environmental Perils, San Diego Region (1991)	\$15	
	Natural History of the Coronado Islands, Revisited (1992)	\$15	
	Colorado Desert and Salton Trough Geology (1993)	\$12	
	Map Sets Only- Pleistocene and Eocene Geology of the Encinitas and Rancho Santa Fe Quadrangles (1983, 3 maps)	\$5	
		TOTAL	

Please Make Checks Payable to SDAG
All Costs Include Shipping

Send Order Form To:
SDAG c/o PHIL ROSENBERG
1550 LOWER LAKE COURT
CARDIFF BY THE SEA, CALIFORNIA 92007

SHIP TO:

San Diego Association of Geologists
6466 Bonnie View Dr.
San Diego, CA 92119



Tanges, Susan E.
1465 E. Lexington Ave. #7A
El Cajon, CA 92019

