



SAN DIEGO ASSOCIATION OF GEOLOGISTS

1994 EXECUTIVE COMMITTEE

CHAIRMAN

Joe Corones
City of San Diego
Waste Management Dept
4950 Murphy Canyon Road
San Diego, CA 92123-4325
(619) 492-5034

VICE CHAIRMAN

Phil Rosenberg
TetraTech, Inc.
6405 Mira Mesa Blvd, Ste 100
San Diego, CA 92121
(619) 622-2278

SECRETARY

Anne Sturz
Univ. San Diego
Marine/Environmental Stds
Alcala Park
San Diego, CA 92110-2492
(619) 260-4600 x4481

TREASURER

Tissa Munasinghe
Univ. San Diego
Marine/Environmental Stds
Alcala Park
San Diego, CA 92110-2492
(619) 260-4600 x2674

MEETING NOTICE

WEDNESDAY, FEBRUARY 9, 1994

SPEAKER: Dr. Roy J. Shlemon, Roy J. Shlemon & Associates, Inc.

TOPIC: Ground Fissures in Southwestern Riverside County: Impact on the Professional Standard of Care.

PLACE: El Adobe Restaurant *
31891 Camino Capistrano
San Juan Capistrano, CA
714 830-8620

TIME: 6:00-Social Hour
7:00-Dinner
8:00-Program

* Please see map and directions on Announcement Page.

DINNER: El Presidente Mexican Platter, chips, salsa, flan desert, tea and coffee.

COST: \$20.00

RESERVATIONS REQUIRED by noon Monday, February 7th. Please phone in your reservation to Anne Sturz, 461-2644. Leave name, number in party and affiliation. Please call Anne if you need to cancel your reservation. If you have special diet requirements (i.e. vegetarian), contact Joe Corones, 492-5034.

ABSTRACT

Ground fissures and related subsidence are increasing in southern California in general and in southwestern Riverside County in particular. Fissure causation is several-fold, including ground water withdrawal, ground water rise and associated subsurface hydrocompaction, and aseismic creep.

Over the past six years, fissures have damaged scores of residential and commercial structures. Litigation has ensued; and damage allegations now exceed 100,000,000 dollars. About 20 geotechnical firms are presently involved in fissure-related litigation; some are defendants relying on a geologic Standard of Care defense, others represent plaintiffs, government agencies, or cross-complainants. As a result, awareness of fissure potential and causation has generally increased: pipelines, tunnels and other engineering projects now specifically require assessment of potential fissure impact. Accordingly, a new "modulation" is now impacting a historical curve of professional Standard of Care.

Dr. Roy J. Shlemon, Newport Beach, California, specializes in Quaternary geology, geomorphology, and soil stratigraphy. Formerly on the faculty of the University of California at Davis and the Louisiana State University at Baton Rouge, for the past 25 years he has been a consultant to private industry and government agencies focusing on fault-activity assessments for nuclear plants, waste repositories, dams and other large engineered structures throughout the world. He also has been active in fissure and subsidence investigations in the southwestern United States.

ANNOUNCEMENTS:

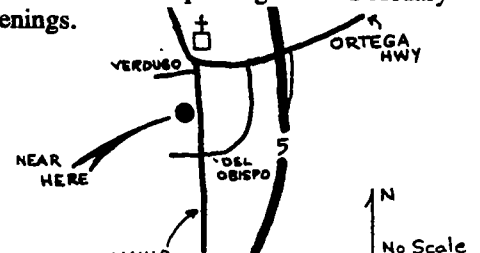
1. **Corporate Sponsors:** As we begin another year of activities, we would like to remind everyone that Corporate Sponsorships contribute greatly to the quality and efficiency of the yearly operation of SDAG. Corporate Sponsor contributions are used to sponsor students at our monthly meetings, support our annual picnic and field trip, offset guidebook publication costs and upgrade SDAG equipment. If you or your company would like to become a Corporate Sponsor and be recognized in our SDAG newsletter, directory and at the monthly meetings, send a minimum of \$100.00 contribution to SDAG, c/o Anne Sturz, 6466 Bonnie View Dr. San Diego, CA 92119.
2. **Thank you to all Corporate Sponsors** received this year: Transglobal Environmental Chemistry, Pacific Soils and Engineering, Woodward-Clyde, William J. Elliot, Carole Ziegler, Gallagher Drilling Service, Perry and Nona Crampton, IT Corporation, Anne Sturz, Robertson Geotechnical Inc., Tony V. Sawyer Consulting Hydrologist, Daryl Streiff Consultant, Catlin Engineering Inc.
3. **SDAG 1994 Membership Dues** were due in January. If you have already renewed your membership, please ignore the attached membership form. For those who have not yet renewed, a 1994 membership form is included with this newsletter. Please complete and mail with your check to SDAG c/o Anne Sturz 6466 Bonnie View Dr. San Diego, CA 92119. Dues may also be paid at the monthly meetings. If you are unsure whether or not you have already renewed your membership, please see Anne at the next meeting. If you know someone else who is interested in becoming a member, feel free to copy your blank membership form and pass it along or post on your company bulletin board.
4. The March 16, 1994 SDAG meeting will feature Mr. Gregory A. Fasano of SAIC. He will be presenting an overview of the YUCCA MOUNTAIN SITE CHARACTERIZATION Project located approximately 100 miles northwest of Las Vegas, Nevada.
5. **Deadline for announcements to be included in the March Newsletter is Friday February 25th.** Please submit your items in writing to Anne Sturz by mail (6466 Bonnie View Dr. San Diego, CA 92119) or fax (260-6804).
6. The 1994 Annual SDSU Alumni Field Trip will held on February 25, 26 and 27, 1994 and will visit the American Girl Gold Mine located in the Cargo Muchacho Mountains, west of Yuma. Please see enclosed field trip flyer. For additional details please contact Bill Elliott at 586-0870. Hard hats are required for the mine tour.
7. A limited number of proceedings from the short course entitled, "Landslides: Recognition, Investigation, and Mitigation" and guides from SDAG's recent field trip "Colorado Desert and Salton Trough Geology" are still available. The cost for the landslide proceedings is \$8.00 and the field trip guides are \$12.00. If interested, please contact Phil Rosenberg. SDAG also has several other publications that are available for purchase which would make good Valentines Day presents, paper weights or possible reference material. Contact Phil Rosenberg for a list of available publications.
8. **PRELIMINARY CALL FOR PAPERS:** The 1994 SDAG Field Trip is tentatively scheduled to revisit the "Geology of Camp Pendleton". Anyone interested in submitting a paper or assisting, please contact Phil Rosenberg.
9. The Cordilleran Section Geological Society of America meeting will be held in San Bernardino this year, March 21-23. There are a number of field trips before and after the meeting that may be of interest to geologists in the San Diego area. For information contact: Joan Fryxell, Department of Geological Sciences, California State University, 5500 University Parkway, San Bernardino, CA 92407-2397, (909) 880-5311.
10. There has been interest in forming a group of local geologists to be available for Earth Science and Geology presentations to schools in the San Diego area. Many SDAG members may already be involved or know of such a program that is in existence at this time. If you have any information on existing programs or would like to participate in establishing one please contact Daryl Strieff at 619-758-2432 or Joe Coronas at 619-484-3582.
11. **CARPOOLS** for the February Meeting in San Juan Capistrano: Anyone interested in carpooling to the February meeting please contact Joe Coronas at 619-492-5034 days or 619-484-3582 evenings.

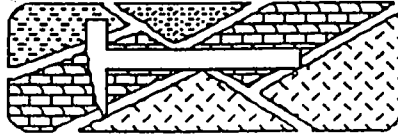
12. **Directions to El Adobe Restaurant:**

I-5 north to Ortega Highway exit

Turn left towards the Mission, then left on Camino Capistrano

The restaurant is on the right, between Del Obispo and Verdugo Streets





Geology Alumni

EIGHTH ANNUAL

S.D.S.U. ALUMNI WINTER FIELD TRIP

CARGO MUCHACHO MOUNTAINS and the AMERICAN GIRL GOLD MINE

TUMCO GHOST TOWN (ruins) and GOLD ROCK RANCH

Field Trip Date: February 25, 26, and 27, 1994

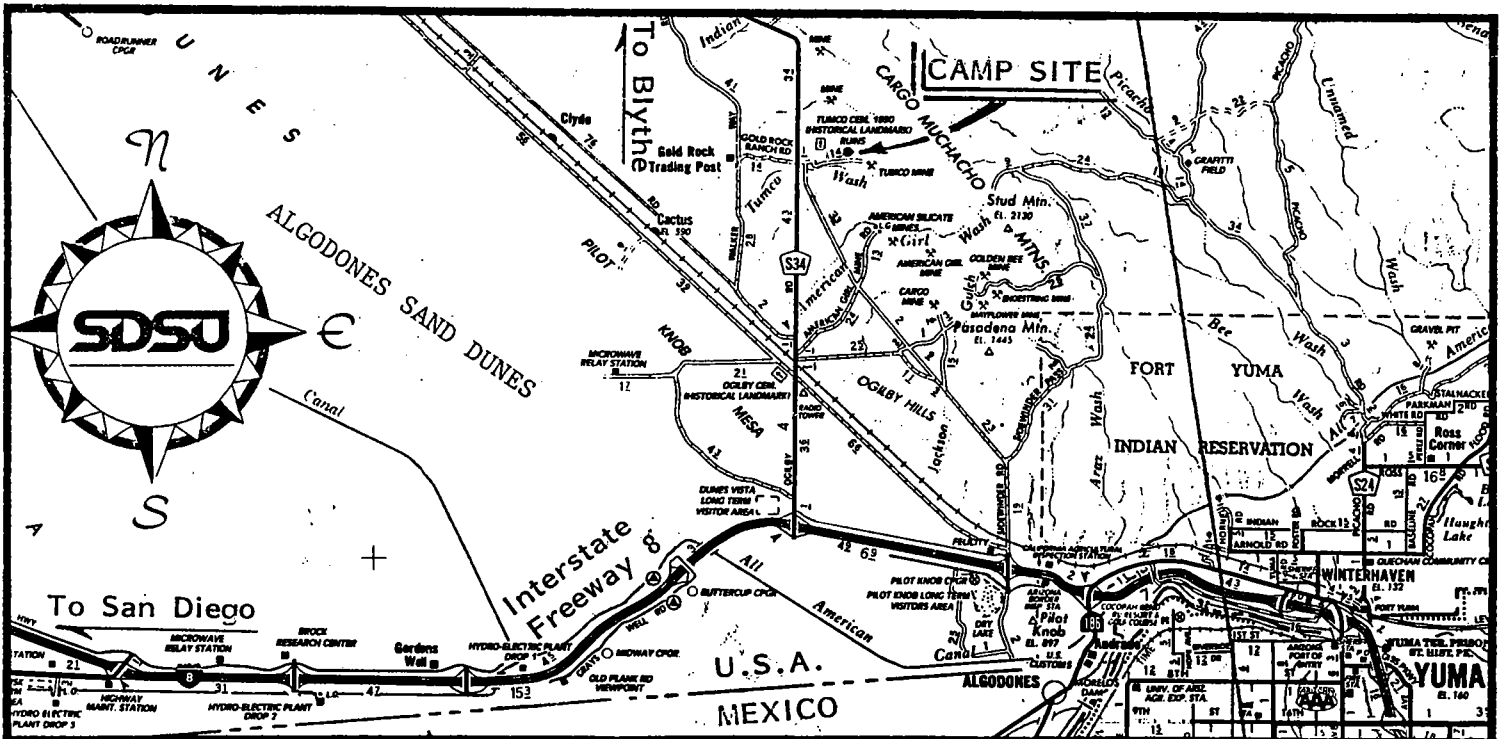
Hard Hat Required for Mine Tour

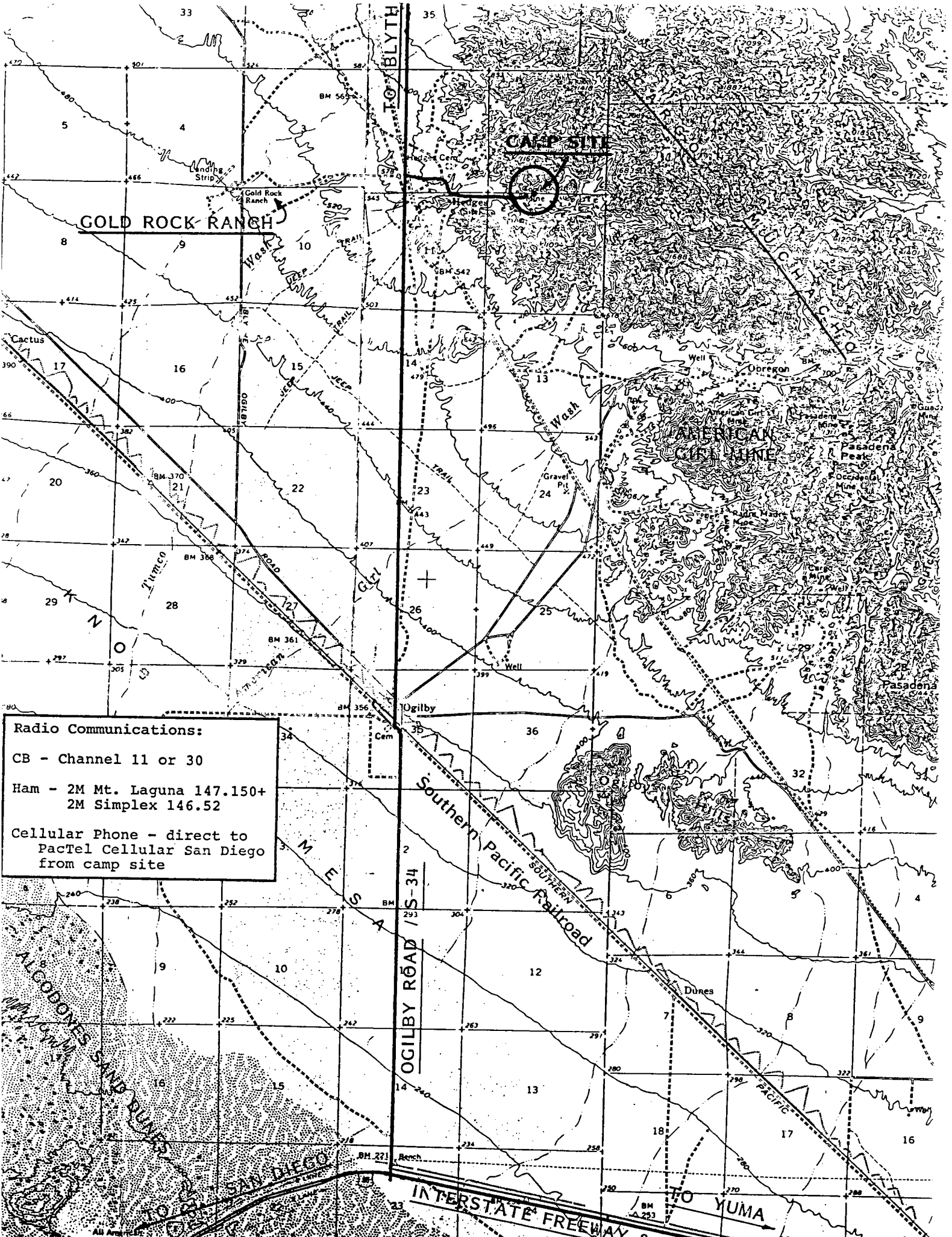
Directions to camp: Starting at San Diego State University. Go east on Interstate Freeway 8, 147.5 miles to the S-34 / Ogilby Road off-ramp. Turn left (north) at the top of the off-ramp and go north 8.4 miles on paved road to the Gold Rock Ranch turn-off. (An approximately 5'x5' black-lettering-on-white-sign reads: "Gold Rock, Antiques, Minerals, Rocks ← 1½ mi., Trailers, RV storage, ...") Do not turn left to Gold Rock Ranch, TURN RIGHT (east) at this sign for 1.0 mile on a well-used dirt road to the camp site - amongst the ruins of the Tumco Ghost Town, mines and mill.

As in the past, this will be a dry camp, so bring everything you will need. The nearest services are at Winterhaven and Yuma, approximately 20 miles from camp. The only thing you can get at Gold Rock Ranch is souvenirs and ice-cream bars.

Bring your family and friends - the more the merrier!

Please call Bill Elliott (619-586-0870) or Daryl Streiff (619-726-6678) for details.





CAMP SITE

GOLD ROCK RANCH

Radio Communications:
 CB - Channel 11 or 30
 Ham - 2M Mt. Laguna 147.150+
 2M Simplex 146.52
 Cellular Phone - direct to
 PacTel Cellular San Diego
 from camp site

Southern Pacific Railroad

OGILBY ROAD 12S-34

INTERSTATE FREEWAY

TO YUMA

ALCODOYES SAND DUNES

TO SAN DIEGO

All Areas are in California