

SAN DIEGO ASSOCIATION OF GEOLOGISTS

1993 EXECUTIVE COMMITTEE

CHAIRMAN

Lynne Perry
Converse Consultants West
9471 Ridgehaven Ct, Ste C
San Diego, CA 92123
(619) 268-3360

VICE CHAIRMAN

Joe Coronas
City of San Diego
4950 Murphy Cyn Rd, Ste 101
San Diego, CA 92123
(619) 492-5034

SECRETARY

Phil Rosenberg
P & D Technologies
401 West "A" Street, Ste 2500
San Diego, CA 92101
(619) 944-9437

TREASURER

Anne Sturz
USD Marine & Environ. Studies
Alcala Park
San Diego, CA 92110
(619) 260-4600, X4481

PLEASE MAKE RESERVATIONS BY THURSDAY, JANUARY 28!!

MEETING NOTICE
JOINT MEETING WITH THE SOUTH COAST GEOLOGICAL SOCIETY
MONDAY, February 1, 1993

TOPIC: "Emerging Applications for Soil Vapor Surveying"
by Donn L. Marrin, Phd

PLACE: El Adobe Restaurant and Cantina
31891 Camino Capistrano
San Juan Capistrano
(714)830-8620

TIME: 6:00 - Social Hour
7:00 - Dinner
8:00 - Program

DINNER: El Presidente Platter, Chips, Salsa, Salad, Flan, and Beverage

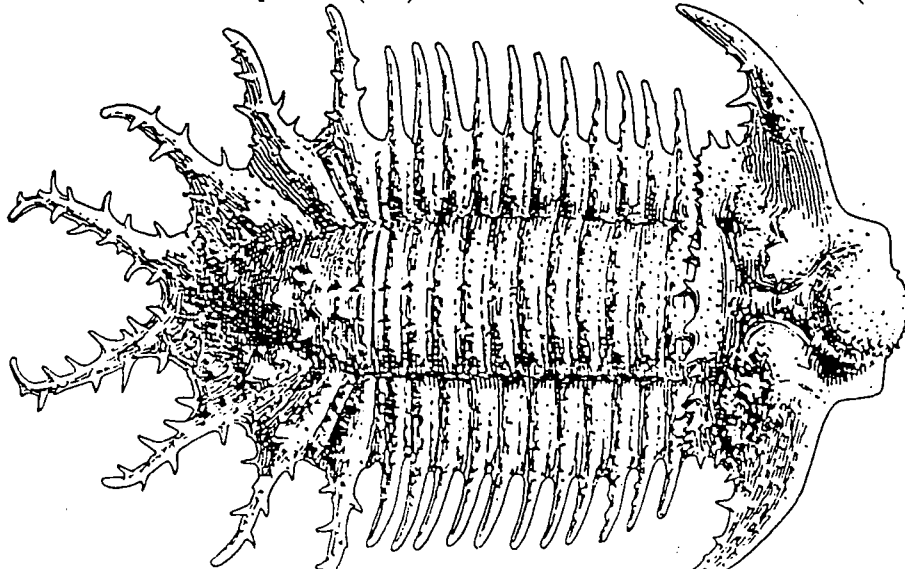
COST: \$20.00 (Please make checks payable to SCGS)

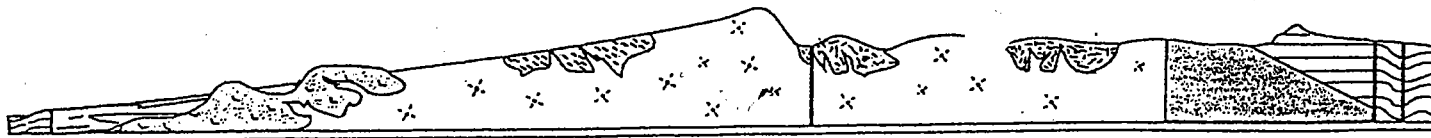
RESERVATIONS REQUIRED! by noon Thursday, January 28. Please phone in your reservation ASAP to the receptionist at Converse Consultants West, (619) 268-3360. Please call Converse Consultants if you need to cancel your reservation.

Donn L. Marrin is the founder and President of InterPhase, a firm specializing in the development of monitoring and validation techniques for in-situ remediation, contaminant fate and transport modeling, management of landfill processes, and the general application of environmental chemistry. His discussion on Soil Vapor Surveying will focus on the regulatory view of the technique, the role of monitoring in-situ remediation processes and validating environmental modeling, the application to non-volatile and semi-volatile products, measuring biodegradation rates and by-products, estimating redox conditions, and the limitations to interpreting subsurface contamination. Donn L. Marrin has his PhD in water Resources from the University of Arizona, a M.S. in Environmental Science from Berkeley, and a B.S. in Biochemistry from U.C. Irvine. His areas of expertise include aquatic chemistry and ecology, vapor-phase dynamics of environmental pollutants, behavior and remediation of organic/inorganic compounds in surface waters, groundwater, and soils.

ANNOUNCEMENTS:

1. SDAG wishes to thank Bill Elliott, Transglobal Environmental Geochemistry, John Minch and Associates, Allied Geotechnical Engineers, and Robertson Geotechnical for 1993 Corporate Sponsorships. SDAG is still looking for other corporate sponsors to help in our yearly expenses. Corporate contributions are used to sponsor students at our monthly meetings and to upgrade our equipment, etc. If you or your company would like to become a corporate sponsor and be recognized in our SDAG newsletter, directory, and at the following month's meeting, send a minimum \$100 contribution to SDAG c/o Phil Rosenberg.
2. The 7th Annual SDSU Geology Department alumni field trip will be held on the weekend of February 26-28, 1993. The trip will visit the Emerson Fault trace in Upper Johnson Valley, and some of the area of surface rupture of the Landers Earthquake. (The information in last month's flyer was incorrect-sorry!). For details, please see the attached flyer. Call Bill Elliott at (619) 586-0870 for details.
3. 1993 SDAG membership dues are due in January. A membership form is attached if you have not already paid your dues. Please complete and mail to Phil Rosenberg. Dues may also be paid at the monthly meetings.
4. **Buy SDAG Publications.** SDAG has an extensive inventory of publications for sale. Many of these make good reference materials on local geology, and are very reasonably priced.
5. SDAG is looking for speakers for 1993 meetings. If you would like to be a speaker, or know of someone who has worked on an interesting project and who would be willing to be a speaker at a SDAG meeting please contact Lyne Perry. Don't be shy, SDAG would like to hear from you!
6. **Deadline for announcements to be included in the March Newsletter are due by February 24.** Please submit your items to Phil Rosenberg at P & D Technologies, FAX (619) 234-3022.
7. The March meeting will be held on St. Patrick's Day, Wednesday, March 17 at Quiggs in Ocean Beach.
8. Study Partner(s) are wanted in San Diego for the 1994 RG Exam. Please contact Lou Janos (619) 275-5758.
9. **Call for papers-** A special symposia titled "Clays and the Environment" will be held at the annual Clay Minerals Society meeting in San Diego on September 27-30, 1993. Papers are being requested that pertain to geotechnical properties of clays, clays and environmental contaminants, and silica and silicates. Further information may be obtained by contacting Dr. Richard Berry, SDSU, (619)594-5586. Either Dr. R. Burtner or Dr. M. Reed, Chevron Petroleum Technology Company, (310)694-7516 and (310)694-7319, respectively, should be contacted regarding contributions to the technical program.
10. The Sociedad Geologica Peninsular will hold its 2nd biannual international meeting on the geology of the Baja California Peninsula on 10-23 April 1993. The host will be the Universidad de Baja California in Ensenada. Meeting registration will be \$45.00 U.S. and the field trip will be \$30.00 U.S. For further information contact Jorge Ledezma-Vázquez, Facultad de Ciencias Marinas, Ensenada, Baja California, Mexico, Apdo Postal 453. Telephones (667) 4-40-01 on 4-40-03 ext. 6962. Fax (667) 4-41-03.





SAN DIEGO ASSOCIATION OF GEOLOGISTS

1993 Executive Committee

Lyne Perry
Chairperson

Joe Coronas
Vice Chairperson

Phil Rosenberg
Secretary

Anne Sturz
Treasurer

ORDER FORM

SDAG PUBLICATIONS

<u>Quantity</u>	<u>Title</u>	<u>Cost Each</u>	<u>Total Cost</u>
_____	Natural History of the Coronado Islands, Baja, California, Mexico (1978). <u>Limited</u> number of original copies available.	\$10	_____
_____	Landslides in Crystalline Basement Terrain, San Diego County (1988)	\$12	_____
_____	Seismic risk in the San Diego Region/Proceedings (1989)	\$10	_____
_____	Geotechnical Engineering Case Histories, San Diego County (1990)	\$12	_____
_____	Environmental Peril, San Diego Region (1991)	\$15	_____
_____	Natural History of the Coronado Islands, revisited (1992)	\$17	_____

TOTAL \$ _____

Make checks payable to SDAG

Ship to:

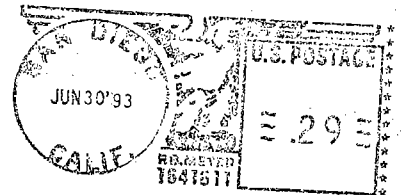
Send order form to:

SDAG c/o Joe Coronas
13450 Russet Leaf Lane
San Diego, California 92129

THANK YOU !!

JUNE 93

SAN DIEGO ASSOCIATION OF GEOLOGISTS
1550 LOWER LAKE COURT
CARDIFF-BY-THE-SEA, CA 92007



SUSAN E. TANGES
1465 E. LEXINGTON AVE, #7A
EL CAJON, CA 92019